

PA industries provide foundation for Tech Center

By Pat Wenger

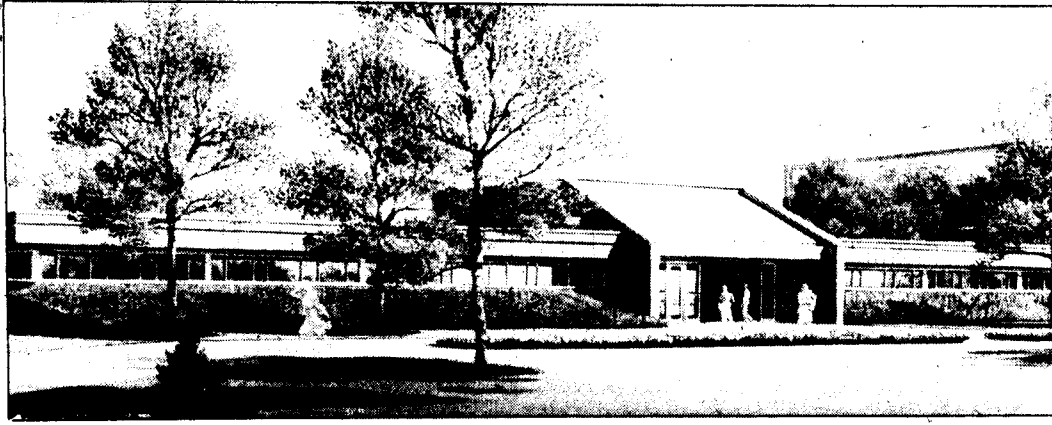
On January 22 the University Board of Trustees met and approved construction of Capitol Campus' first solely academic facility.

The Technology Center will enlarge laboratory space and bring the University closer to Pennsylvania's technology industries. Completion is scheduled for fall, 1984.

Last summer the Capitol Campus formally announced the start of the capital campaign to raise \$550,000 for the construction of a \$2 million Technology Center on the campus. At the December Board of Advisers meeting, members heard the good news that the goal had been met.

The Technology Center will include laboratories for chemistry, physics, water resources, life sciences, computation, energy and materials/geology, plus classrooms, seminar rooms and offices.

Although it is designed to reduce the overcrowding that now occurs in the campus labs, its completion will not significantly free up any classroom space in the Olmsted Building, according to James D. South, Director of Student Affairs. At the December Board of Advisers meeting, Theodore L. Gross, Provost, reported that 100 to 150 technology students had to be turned away from this year's program because there simply was no room left for the students. He said that even more engineering students are likely to be turned away for the 1983-84 school year.

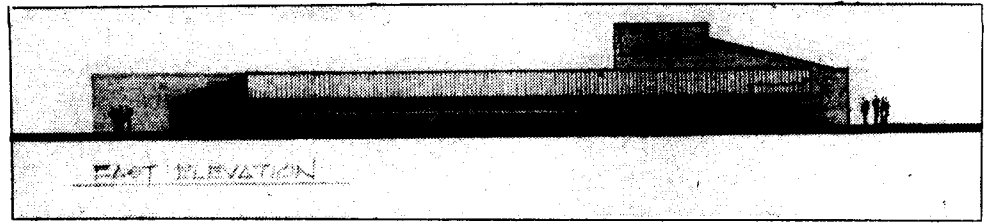


In a recent campus publication, Gross said, "Industries and businesses have been generous in their support and should see the Technology Center as their resource for research and continuing education workshops. A deep and long-lasting partnership of the University and the community is being realized through the establishment of the Technology Center."

The architectural plans indicate the facility will be a one-story structure in an L shape between the Olmsted Building and the Multi-Purpose Building, will be faced with brick and have copper roofing.

Although the structure is not planned for upward expansion, future additions on one end of the inner elbow of the L will provide additional floor space as needed.

The 20,000 square foot structure site is currently marked off in front of the main building with red flagged stakes. The stakes were placed by John W. Harmon's Surveying Class as a class project. Construction of the building is scheduled to begin before the end of the summer term.



Meade reaches Heights with sex toy party

By Marsha Larsen

Toys ranging from gag gifts to serious sex selections were offered for sale at the adults-only SensualWare party Wednesday night, Jan. 19, at the Student Center. The event, held as a fund raiser, was sponsored by the Meade Heights Community Council.

SensualWare is like Tupperware -- both use the home party format, and both demonstrate products guaranteed to preserve freshness.

SensualWare rep. Gary Glitz presented Novelty items (including incredible edibles -- candy pants and tasty briefs), Games (...sensual people play), Fashions for Passion (frocks from "Ooh-La-La" to "Tonight's the Night"), and

many other ornaments, instruments, and unguents for extra-sexy people.

Party-goers paid on the spot for purchases to be shipped at a later date. Glitz required proof of age before he accepted orders.

About 30 braved the cold for the hot time at the party. None were in trenchcoats.

V.P. Tim DeZorzi of the Meade Heights Council said the group certainly did not intend to excite prurient interests by sponsoring the affair; rather, they wanted an unusual fundraiser where people could have a lot of fun.

Several party-goers commented the event was the climax of an otherwise dull week in January.



Photograph by Jerry Trently