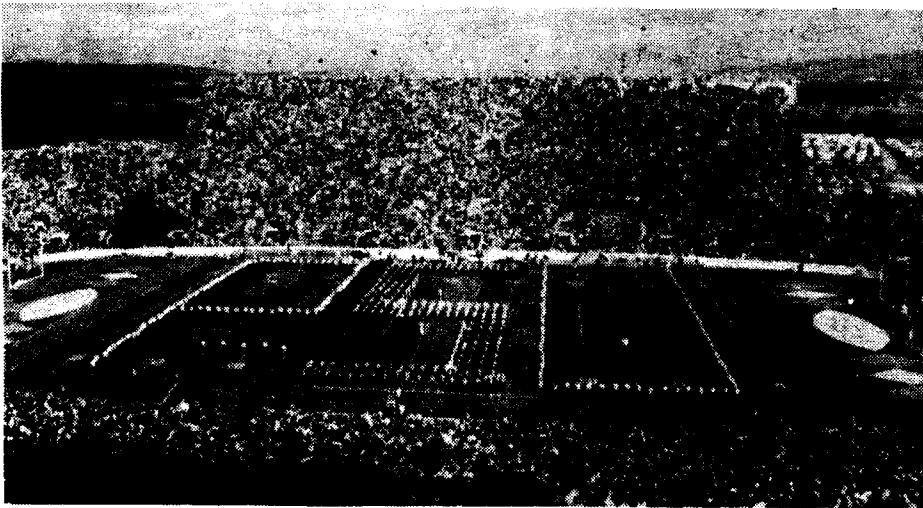


# Sports



Reader Photo by Mike Zimmerman

This is the second year Beaver Stadium has been expanded, and this time it's for the students in the student section. 6000 new seats were constructed this past winter for the rising student ticket sales.

By Mike Zimmerman

There will be a new ticketing method for the Penn State students who plan to buy season tickets for the 1980 football season. The students will be given season passes instead of separate game tickets, according to Sports Information Director Dave Baker.

The students will be issued a personalized card that will be punched as they enter the gate.

The season pass system was used in the early 70's but was discontinued in favor of the individual game ticket system. The season pass is coming back because it is easier for the ticket office.

Baker said he did not expect an increase in season ticket prices for the students, although exact prices will not be given until the end of Spring Term. He said a 1980 football season student pass for six games could cost \$20.

Student demand for seats has been on the rise, Baker said. Last year between 19,000 and 20,000 student tickets were sold.

There should not be any change in the student section even with the additional seats added by this winter's stadium expansion, Baker said.

Students can also purchase tickets through the mail. This summer, the same as in past years.

Baker said the majority of tickets sold to the students are for the entire season. However, students can purchase date and individual game tickets at a later date as in the past.

One last note, the Lions Sept. 13 date with Colgate in Beaver Stadium has been moved to Sept. 6 to avoid any possible conflict with dormitory space during early practice, coach Joe Paterno said.

The team is housed together in one dormitory during the fall early practice sessions. This would be in direct conflict with the returning students for the 1980 fall term.

The other five home games are as follows: Nebraska Sept. 27, Syracuse Oct. 18, Miami (FLA) Nov. 1, N.C. State Nov. 8, Pittsburgh Nov. 22.

LET'S GO PENN STATE!

## Piscatorial Prospects

By Tony Gladfelter

Next Saturday, May 3, marks the opening of the fishing seasons in Pennsylvania for muskellunge, northern pike, pickerel, and walleye. Although this is not as big an event as the opening of trout or bass season, there will be quite a few musky and pike addicts out churning their favorite waters to a froth.

Although I am rather inexperienced in the pursuit of these toothy predators, I do know of several excellent places to fish for them in this vicinity. The closest is our big neighbor, the Susquehanna River, especially at the Falmouth access area. To get to Falmouth from campus, go to the square in Middletown and turn right. Follow Rte. 441 South past Three Mile Island. About two miles past the cooling towers is a sign which reads Falmouth Access Area and also one which says Fisherman's Wharf. Turn right here and the road takes you straight to the river.

Fisherman's Wharf is the name of a tackle store right beside the river where you can usually get the latest fishing information and also live bait.

Falmouth fishermen catch both walleyes and muskies regularly. The best shoreline fishing lies upstream from the parking lot. Most favored baits seem to be jigs or live minnows fished on or close to the bottom. Some fishermen also report success on float-diver minnow-type lures.

An area lake noted for its northern pike fishing is Pinchot Lake near Rossville, Pa. To get to Pinchot: Take Rte. 283 toward Harrisburg. Get on I-83 South and follow to the Lewisberry exit. From there, take Rte. 177 South right to Pinchot State Park.

A popular method in this lake is fishing large minnows with bobbers for northern pike. It is also noted for its abundant population of crappies. If you're after a mess of these tasty panfish, small minnows with bobbers is a productive way of fishing. An even easier way, which often works just as well, is to use a 1/16 or 1/32 ounce jig or twister type lure with a float about three feet above it. Cast out and reel back in very slowly. I have accounted for literally hundreds of crappies using this technique. From dusk on into full nightfall is a prime time to catch these scrappy panfish.

Trout fishing: The trout were biting well on Stoney Creek last weekend. It seemed that in the high, clear water they were well distributed throughout the stream and not just in the customary, over-fished holes. Garden worms seemed to be the most effective bait as I caught six trout and lost about that many in two outings using this bait. Other anglers reported success with corn.

## Lions Ready For E-town

By Bruce Burns

Following a recent 4-2 loss to Spring Garden which dropped their record to 1-4-1, the PSU/Capitol Baseball Lions are preparing for tomorrow's contest at Elizabethtown College, along with Saturday's home doubleheader with Penn State's Ogontz Campus club.

Coach Ron Melchiorre's squad will have a rough time when they travel down Route 230 to face E-Town's Blue Jays, who return their entire pitching staff from last season's 12-6 team. On Saturday, PSU/Capitol will face one of the better Commonwealth Campus teams when Ogontz visits Middletown for the twinbill, which will begin at noon on Little Hollywood Field.

The Lions have been having problems getting timely hits all season long, stranding over 50 baserunners in their first six outings. It has been surprising that PSU/Capitol has displayed the batting power which has put all those players on base, but with a couple of key strokes in certain situations, the Lions' mark would be drastically improved.

Pitching has continued to be the Lions' real strength, which should help them during this three-game, two-day stretch. On the horizon for PSU/Capitol are doubleheaders with Juniata College and Beaver College, scheduled for April 30th and May 3rd respectively. Last week's rainout with Lebanon Valley College will be rescheduled in the near future as well.

## Intramural Sports

### SOFTBALL

#### Red Division

Team	Won	Lost
Brewski's	1	0
Bad Co.	1	0
Nuclear Wastes	1	0
Flying Wombats	2	1
Gashouse Gang	2	1
Pallbearers	1	1
Rootbeer Rags	1	2
X.G.I.	0	2
Wrisburg Weenies	0	2

#### White Division

Team	Won	Lost
Redneck Sultans	2	0
Doughboys	2	0
Ball Busters	1	0
Sultans of Swing	1	1
Quaaludes	1	1
WSDC	0	1
WCFL	0	1
Stoned Rangers	0	1
First Year Class	0	0

#### Blue Division

Team	Won	Lost
No Names	2	0
Elwood's Boys	1	0
Beta City Bombers	1	0
NAEYE	1	1
Big Sticks	1	1
International Bears	1	1
Lappers	1	2
Buffoon Platoon	0	2
The Graduates	0	1

The Redneck Sultans opened their IM Softball season with two impressive victories over the Stoned Rangers and the Quaaludes, by scores of 30-16 and 18-2 respectively. Captains Czar Burns and Ben Fox are pleased with the squad's early-season performance, and look for even more overwhelming efforts as the campaign progresses.

### BOWLING

#### Standings of the Teams

Team	Won	Lost	Tie
Midnight Express 1	10	2	
Capitol Factor	9	3	
Prowlers	8	4	
WSDC	6	5	1
11th Framers	2	10	
MSU	0	11	1

High game--Bruce Rambacher, Midnite Express (230)

High series--Bruce Rambacher (586)

High average--Bruce Rambacher (192)

### INTRAMURAL NEWS

A meeting will be held for all those interested in participating in the Intramural Tennis League on Wednesday, April 30, at 3 p.m. in the Gym of the Multi-Purpose Building. Competition is scheduled in men's and women's singles, as well as mixed doubles. If you cannot attend the meeting, please contact the Recreation-Athletics Office for further information.

### IAA BASKETBALL MARATHON

The International Affairs Association will sponsor a basketball marathon on Wednesday, May 7, in the gym. It will benefit the Cambodian Refugee Fund.

### CHOCOLATE CHASE

The Third Annual Chocolate Chase 10,000-meter run will be held this Sunday, April 27, at 1 p.m. at the Hersheypark Stadium in Hershey. Runners may register the day of the run from 10 a.m. to 12:30 p.m.

**Middletown Lanes**

**944-9991**

**WEDNESDAY- Campus League Nite**

**Ball drilling services, Bags,**

**Shoes and Accessories**