

# C.C. Reader

## Growth At Capitol

# Faculty Research Has Priority

During the first five or six years of Capitol's life, research was not a priority. Most of the time and energy was spent towards developing the academic courses and curriculum. Last year over \$600,000 in research grant money was awarded through Capitol Campus research according to Dr. McDermott, Provost/Dean at Capitol.

Approximately one half of the grant money is funded by the federal government, one half is funded by the state, and about one percent is funded by way of private foundations. All of the money generated goes directly into the research fund.

Some of the research now being done is funded by NASA. George Gumas, Associate Professor of Engineering and Mathematics, is working on a computer for a wind tunnel.

Peg O'Hara, Coordinator of Career Planning and Placement, is in charge of the federally funded co-op program. Her program is so well run that Capitol was fully granted again this year, even though many colleges lost some of their funding.

Norman Baldwin, Senior Research Associate, is doing research for the Pennsylvania Department of Public Welfare. Phillip Taylor, Assistant Professor of Psychology and Social Science, is researching the prevention of teenage pregnancy. Charles Cole, As-

sociate Professor of Engineering, has a contract with the U.S. Environmental Protection Agency, and Frank Swetz, Associate Professor of Mathematics and Education, is working, or has worked on about three grants dealing with Mathematics in China.

These are only a few examples of the research which is being done here at Capitol. Every faculty member is involved with some sort of research. Research is defined as research, scholarship, and creative activity (RSC).

According to Dr. Melvin Wolf, Associate Dean of Research, no classified research is being done. The University guarantees the faculty that any research done will be publishable.

Dr. Wolf feels that teaching has not been sacrificed because of the tremendous growth in research. If a professor is doing a lot of research, a part-time teacher will be hired to take part of his teaching chores. Dr. Wolf also feels that if a professor is doing research, he will be more excited about his work therefore will not grow tired of teaching similar classes year after year.

Capitol Campus seems to be an ideal campus for research. A young, growing outfit and a high-powered faculty leads to an exuberance of growth. Dr. Wolf calls Capitol, "the ideal place to collaborate with each other."

# IAA Enters Model U.N. Competition

by Andy Arce

In the Spring, the International Affairs Association was invited to and accepted an invitation to participate in the Yale Model United Nations which is to be held at Yale University on October 27, 28, and 29.

The delegates from Capitol attending this conference will be Andy Arce, Mike Sopato, Keith Yundt, Tony Hyczko, Patty Bloom, Sheila McCaffrey and John Cooke.

These delegates will be representing the country of Nigeria which is on the Security Council. At the same time they will be representing Penn State as a whole, which they have been doing for the past few years.

Professor Clem Gilpin, IAA advisor and an expert on Africa and U.N. issues in general, will accompany the group. Professor Gilpin spent two years in Nigeria during the mid-60s as a member of the Peace Corps. Because of this, the delegation from Penn State feels more confident to debate and lock horns with the delegations from other schools. They have also done much

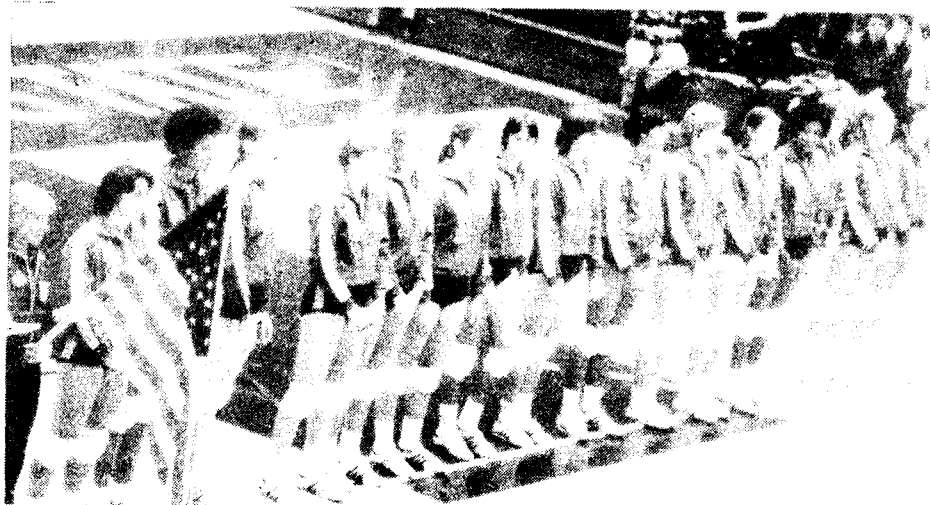
research and will be leaving this campus well read in Security Council issues.

In the past two years, Capitol Campus has won at least one award at every Model U.N. which they have attended around the country. These awards include best prepared delegation, runner-up in best prepared delegation, and outstanding delegate.

Some of the schools attending will be Harvard, Princeton, MIT, Kent State, Amherst, Mt. Holyoke, Wells College in New York, Ereighton University in Nebraska, Mitchell College in New York, and Fairfield University and Alberus Magnus, both from Connecticut.

Some of the major issues which will be discussed are: U.N. Interim Forces in Lebanon, Nambia, U.N. Peace Keeping Force in Golan Heights, Isreali Involvement in Lebanon, Rhodesia (Zimbabwe), Cyprus and South Africa.

If anyone would like information about the IAA and what they do on or off campus, leave a note in the IAA mailbox in the SGA office, W110.



The United States women's volleyball team lined up before the game with Japan in International competition in a match at University Park last Friday night. (photo by Lyda Baker)

# Campus Benefits From Continuing Ed.

One of the most financially successful programs on this campus is also the program that communicates the most with the businesses and communities of Pennsylvania. Although many of the future employers of our students form their impressions of our school through Continuing Education, many students don't know quite what it is.

Continuing Education, (C.E.), provides services varying from research for statewide organizations to offering unscheduled classes to students who need them in their final term. This year the program is running about 200 seminars on a broad number of subjects, including solar energy, writing, public relations, and business systems, plus a study tour to the Hirshhorn Museum and the Philadelphia Museum of Art. These programs attract a diverse audience. When the people who attend them see a conscientious, dynamic department they are impressed with our campus.

The C.E. program is one of the more impressive elements of this school. It is growing and seems to be one program that provides solutions to some of our problems rather than more

problems. For instance, the money that C.E. makes comes back to our campus, (from U. Park), in the form of new equipment for the audio-visual department, (which they run), better maintenance, new facilities, and more. They are directly responsible for the new boiler in Wrisberg which allowed the school to use the building during the summer for the Council of Branch Campuses Leadership Conference. Also, when C.E. is funded for state programs this results in salary savings in the campus budget. They are attracting money and attention to our school in a very positive way.

Because of minor conflicts over furniture storage and the keggars, several students have been concerned that C.E. may be infringing on the students' use of their own center.

There are specific procedures and priorities for scheduling in the center and generally the students have first priority. There may be conflicts but the students need not feel that C.E. is threatening their use of the center; C.E. is helping our student body and is willing to cooperate with us, according to Ron Melchiorre, Area Director of C.E.

## IN THIS ISSUE

Perspectives-Where Are We Headed?.....	Page 2
Senatorial Platforms.....	Page 3
Arts-Album and Book Review.....	Page 4
Lifestyles-Volleyball, Halloween Story.....	Page 5
Club News.....	Page 6