

CAPITOL CAMPUS READER

Vol. 6 No. 10

Capitol Campus

Penn State University

January 13, 1977

Energy Consumption

By Brian McDonough

Rising fuel costs and an unusually cold winter have made conservation efforts more necessary than ever says Russ Rorabaugh, manager of maintenance and operations for Capitol Campus.

The cooler weather for this winter is indicated by the increase in the number of degree days for the last three months of 1976. A degree day, for heating purposes, is the difference between 65 degrees and the daily mean temperature under 65 degrees. According to the National Weather Service in Harrisburg there were 2,249 degree days in the last three months of 1976 while during the same period in 1975 there were 1,628 - an increase of 38%.

Oil consumption for the last three months is only 16% above the same quarter in 1975, an increase of 13,120 gallons. This modest rise in fuel consumption is attributed by Mr. Rorabaugh to the many conservation methods now in effect. Approximately 17,000 gallons of additional oil would have been necessary if these conservation measures had not been in effect.

Unfortunately these savings are being offset by the rising cost of No. 4 oil which the central heating plant uses. This oil now costs almost 38 cents a gallon, an increase of over four cents since November of 1976. An estimated 150,000 gallons of oil is expected to be burned between now and the end of winter.

Since these rising costs must eventually be absorbed by higher tuition charges and higher taxes, Mr. Rorabaugh pointed out that there were two ways for students and faculty to help lower energy consumption.

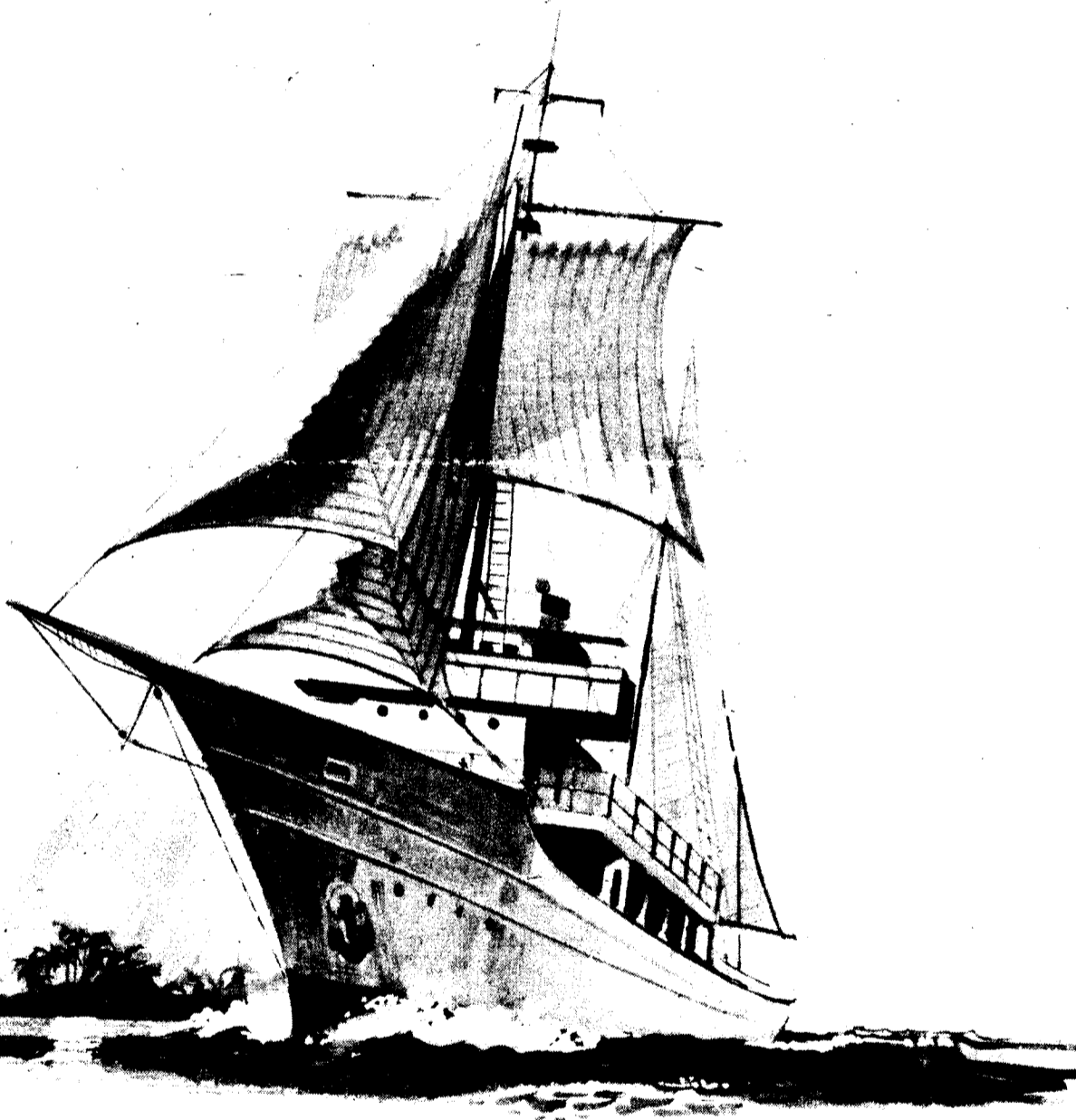
The first is to shut off the radiator controlling the thermostat in classrooms and dorms before opening windows. In the main building the thermostat is recognized by a circle T under the metal flap on the radiator controls. Adjacent radiators will have an arrow pointing in the direction of the master thermostat. This is especially important because an open window can cause the thermostat to react to cold air by increasing the amount of heat.

Also, as the electric bill is comparable to the heating bill, the "last man out" rule should apply in lighting situations. That is, the last person out of a room should turn out the lights.

Weekend Weather

The extended outlook for Eastern Pennsylvania Friday through Sunday.

Chance of snow Friday. Variable cloudiness Saturday and Sunday, with snow flurries in the North. High temperatures through the period - mid 20s to mid 30s. Lows 9 to 20.



Wouldn't you really rather be floating in the middle of a warm ocean? See story pg. 4

Bus Service A Possibility

By Wm. Kane

Results have been compiled in response to the question of a bus service to Capitol Campus and the Fruehauf plant behind the school.

Questionnaires were sent out to all commuter students prior to the Christmas vacation. According to Dr. South, Director of Student Affairs, 15 per cent of the commuter students responded, and about three per cent expressed intent to use the service. Fruehauf also made its own version of the questionnaire, to be filled out by employees.

Requests have been made to the

Capitol Area Transit Co., by both Fruehauf and the Capitol Campus. If the requests are granted, the CAT buses will make two additional stops. The front entrance of the main campus building would be one stop, and the other at the Fruehauf Corp., for its estimated total of 65 employees, who would use the service, South said.

Commuter students residing anywhere from Harrisburg to Middletown would benefit most by the service, for presently that is the established route of the CAT buses.

Dr. South did mention, though, that residents of the Lancaster area could

possibly take the train, and then transfer onto the bus heading for the campus, if need be.

Citing several reasons as justification for the bus service, Dr. South mentioned rising fuel prices, environmental considerations, traffic problems and hazardous driving conditions in winter. South also stated, the bus service may open opportunities for prospective students, or Fruehauf workers, who've previously had no means of transportation.

"We are working to make the service operational as soon as possible," Dr. South said.