

## Intramural Bowling Team Standings

| TEAM                 | WON | LOST |
|----------------------|-----|------|
| 1. XGI's             | 19  | 5    |
| 2. All in the Family | 16  | 8    |
| 3. Foulballs         | 16  | 8    |
| 4. W.B.Y.A.?!        | 15  | 9    |
| 5. Pinheads          | 13  | 11   |
| 6. Last Laugh        | 9   | 15   |
| 7. WZAP              | 8   | 16   |

### Wednesday's Results

|            |                          |                   |   |
|------------|--------------------------|-------------------|---|
| Foulballs  | 4 (Forfeit) against WZAP | All in the Family | 1 |
| W.B.Y.A.?! | 3                        | Pinheads          | 0 |
| XGI's      | 4                        |                   |   |
| Last Laugh | 4 Forfeit                |                   |   |

### Individual Results

| HIGH SERIES    |     | HIGH GAME        |     |
|----------------|-----|------------------|-----|
| John McCormick | 542 | Gunter Idler     | 232 |
| Ken Debiak     | 527 | Mike Prete       | 200 |
| Dave Pinter    | 514 | Dave Pinter      | 195 |
| Gunter Idler   | 537 | John McCormick   | 194 |
|                |     | Harold Dahringer | 203 |
|                |     | Ron Warhola      | 191 |

## GOLF

### May 10, 1972 at Hershey Parkview

| CAPITOL      |       |      | LEBANON VALLEY |       |      |
|--------------|-------|------|----------------|-------|------|
| Players      | Score | Pts. | Players        | Score | Pts. |
| Jim Reed     | 77    | 0    | Jerry Frey     | 71    | 3    |
| Dave Wiggins | 101   | 0    | Tim Trone      | 81    | 3    |
| Team Match   |       | 0    | 4 & 2          |       | 3    |
| Wm. Mitchell | 102   | 0    | Chet Matelleo  | 78    | 3    |
| Dan Slatter  | 103   | 0    | Bob Roes       | 81    | 3    |
| Team Match   |       | 0    |                |       | 3    |
|              |       | 0    |                |       | 18   |

### May 11, 1972 at Yorktowne

| CAPITOL        |       |      | YORK               |       |      |
|----------------|-------|------|--------------------|-------|------|
| Players        | Score | Pts. | Players            | Score | Pts. |
| Bob Hartman    | 0     | 0    | Terry Fink 7 & 5   |       | 3    |
| Dave Wiggins   | 5 & 4 | 3    | Bill Long          |       | 0    |
| Bill Mitchell  |       | ½    | Jim Delaney 3 & 1  |       | 2½   |
| Gordon Schuman | 0     | 0    | Randy Nilson 7 & 5 |       | 3    |
| Total          |       | 3½   | Total              |       | 8½   |

## GOLF CLINIC I

The FIRST summer session for a golf clinic at Capitol Campus will begin on Monday, June 5, 1972.

The four week clinic will meet at the Rec/Aths Building on Monday and Wednesdays at 6:00 p.m. (Group A) and 7:00 p.m. (Group B).

Registration is limited to 25 persons and the fee is \$5.00 per person. The clinic will end after the June 28th meeting.

Please pay fee of \$5.00 and register at the Rec/Aths Building between the hours of 8:00 a.m. and 5:00 p.m. Friday, June 2 @ 5:00 p.m. is the registration deadline.

## GOLF CLINIC II

The SECOND summer session for a golf clinic at the Capitol Campus will begin on Monday, July 10, 1972.

The four week clinic will meet at the Rec/Aths Building on Monday and Wednesdays at 6:00 p.m. (Group A) and 7:00 p.m. (Group B). Registration is limited to 25 persons and the fee is \$5.00 per person.

The clinic will end after the August 3rd meeting. Please pay fee of \$5.00 and register at the Rec/Aths Building between the hours of 8:00 a.m. and 5:00 p.m. Friday, June 2 @ 5:00 p.m. is the registration deadline.

## Varsity Tennis Sweeps Skuylkill

by Mike Collins

Capitol Campus' Varsity Tennis Team had its most decisive victory on Thursday, May 18, by sweeping the Skuylkill-Haven Campus of Penn State, 9 to 2.

The match was the most impressive tennis playing by the varsity team this season. The match had already been won after the first five singles had been played. Recently the team has had troubles in tasting victory but Thursday it got it all together and played good tennis.

The team has one match remaining with Delaware Campus of PSU. It is a home match and will be played Wednesday at 2:00, so come out and see some real tennis being played.

### Capitol Tennis Scores

| SINGLES           |               |
|-------------------|---------------|
| J. Phillips       | 6-4, 6-3      |
| J. Hilbert        | 6-4, 6-3      |
| J. O'donnell      | 6-0, 6-3      |
| J. Trandler       | 7-5, 6-3      |
| B. Lopez          | 6-3, 4-6, 6-3 |
| J. Mason          | 3-6, 4-6      |
| G. Harakal        | 6-3, 3-6, 6-2 |
| K. Reinsmith      | 6-4, 6-2      |
| DOUBLES           |               |
| Phillips-Hilbert  | 7-6, 6-1      |
| Lopez-O'donnell   | 4-6, 7-6, 6-7 |
| Harakal-Reinsmith | 6-0, 6-2      |

## Baseball Capitol Loses Tough One

The Capitol Campus Baseball Club lost a tough one to Spring Garden College last Wednesday.

Though Capitol outthit its opponent seven to five, they still lost 5-2. It was a rough loss for Capitol who was coming off a 6-2 victory over Lebanon Valley College.

Steve Rosenzweig, getting the starting nod after his brilliant relief stint last week, pitched well enough to win most games. He struck out eight batters and walked only two.

But, two of the five hits he gave up were homeruns, one each by Link and Fredericks of Spring Garden. Both were hit with a man on base. The only other run scored by S.G. was in the seventh on a sacrifice fly.

Capitol didn't score until the fifth inning when Rosenzweig hit a solo HR. They added another in the sixth when Andy Oronzi singled and later came around to score on a bad throw. Capitol seemed to be rallying that inning, but S.G.'s relief pitcher quieted their rally.

Besides the homerun by Rosenzweig, Oronzi had three hits. There were also singles by Scuddy, Laskowski and Konsowitz.

### Box Score

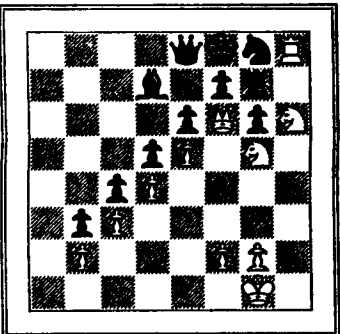
| SPRING GARDEN COLLEGE |    |   |   |     |
|-----------------------|----|---|---|-----|
|                       | AB | R | H | RBI |
| Rosanova (LF)         | 4  | 1 | 0 | 0   |
| Link (2B)             | 4  | 2 | 2 | 2   |
| Celano (RF)           | 3  | 0 | 0 | 0   |
| Bucci (3B)            | 4  | 0 | 0 | 0   |
| Fagan (C)             | 3  | 0 | 0 | 1   |
| Sutphin (1B)          | 2  | 0 | 1 | 0   |
| Conrey (P,RF)         | 2  | 1 | 0 | 0   |
| Fredericks (SS)       | 2  | 1 | 1 | 2   |
| Rizzo (CF)            | 3  | 0 | 0 | 0   |
| Etner (PH)            | 1  | 0 | 0 | 0   |
| Janorko (LF)          | 1  | 0 | 1 | 0   |
| Totals                | 29 | 5 | 5 | 5   |

| CAPITOL        |    |   |   |     |
|----------------|----|---|---|-----|
|                | AB | R | H | RBI |
| Wexler (CF)    | 4  | 0 | 0 | 0   |
| Deacon (3B)    | 4  | 0 | 0 | 0   |
| Oronzi (RF)    | 3  | 1 | 3 | 0   |
| Laskowski (C)  | 3  | 0 | 1 | 0   |
| Scuddy (2B)    | 3  | 0 | 1 | 0   |
| Guss (SS)      | 2  | 0 | 0 | 0   |
| Rosenzweig (P) | 3  | 1 | 1 | 1   |
| Kelly (1B,LF)  | 2  | 0 | 0 | 0   |
| Burger (LF)    | 1  | 0 | 0 | 0   |
| Konsowitz (1B) | 2  | 0 | 1 | 0   |
| Totals         | 27 | 2 | 7 | 1   |

HR - Link, Fredericks, Rosenzweig

|                     | R | H | E |
|---------------------|---|---|---|
| Spring Gdn. 2002001 | 5 | 5 | 3 |
| Capitol 0000110     | 2 | 7 | 5 |

### This Week's Chess Puzzle



White to play and mate in two moves

Black is so boxed in that White can mate in two ways, 1 RXXch, RXX; 2 Kt-R7 mate. Or 1 Kt-R7ch, RXX; 2 RXXKt mate.

## LENKER CYCLE SALES

Motorcycles  
New and Used

Official Inspection  
Station

All Makes Repaired

515 Rosedale Avenue  
Near Olmsted Plaza  
Middletown, Pa.  
Phone 944-4256

### Folk Dancing

Thursday evenings at 7:30  
on campus

Harrisburg, Pa.  
**STAR ART THEATRE**  
1205 N. 3rd ST. 232-6011  
Double Feature  
FINEST ADULT ENTERTAINMENT

Comfortably Air Conditioned  
STARTS FRIDAY  
- FOR ONE WEEK ONLY

Not Recommended for  
Adults Under 21

Hit #1 X-rated

IN  
THE  
SPRING

In Beautiful Eastman Color

Plus

Hit #2 In Color -- X

WHEN THE HUSBAND'S AWAY  
THE WIFE WILL PLAY



Sex-American Style  
**Dingle-Dangle**  
IN COLOR  
ADULTS ONLY

Ladies Free  
On Thursdays Only

CONTINUOUS 11" TO 11"  
NO ONE UNDER 18 PERMITTED

st  
in College  
sales

FIDELITY UNION  
LIFE INSURANCE  
COMPANY



Guy Page 944-5401



It doesn't  
amount  
to much.

\$1,999.\*

Which isn't much at all considering all the car  
has amounted to in 23 years.

Cameron Auto, Inc.

3400 Paxton Street  
Harrisburg, Pa.



Across from the  
Harrisburg East Mall

\*P.O.E. suggested retail price, Sedan 111.

Local taxes, other dealer charges not included.

Blood Donors  
Needed!

All Blood Types

\$80.00/month

We need blood donors  
of all types immediately.  
For only a few hours of  
your time a week, you can  
earn \$80 per month.  
Please call today.

IMMUNO BLOOD  
SERVICES

2634 N. Third St.  
Harrisburg, Pa.

238-6349 or 238-6309