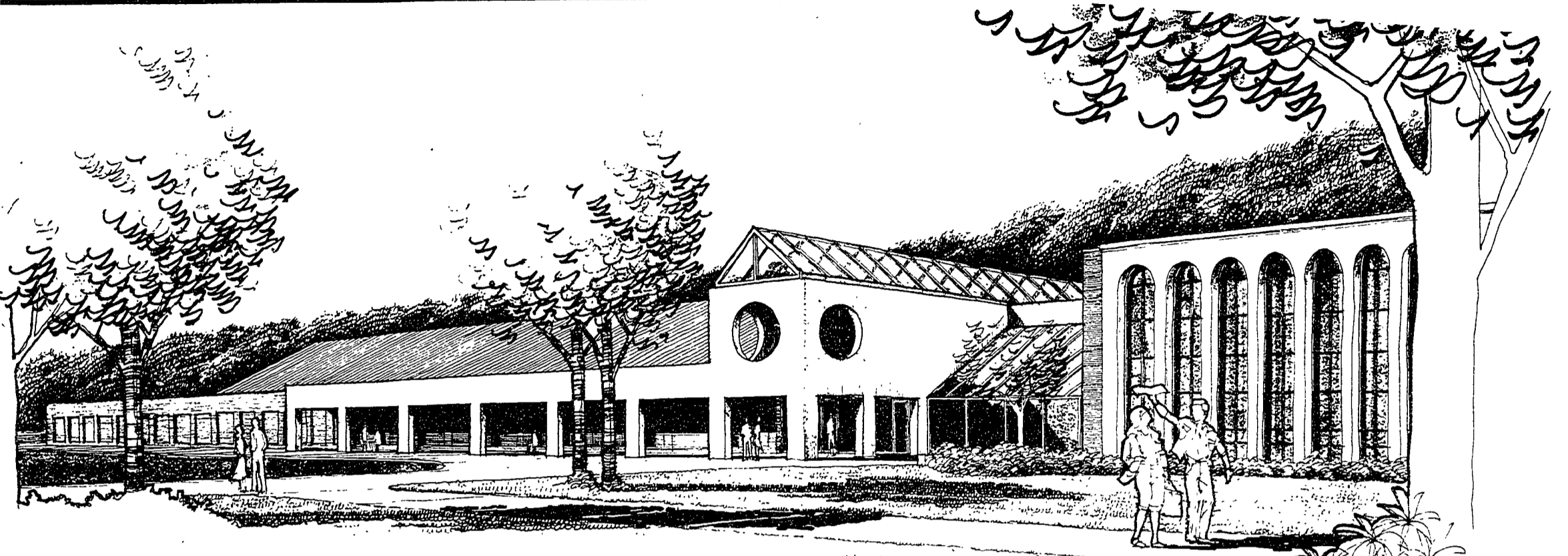


**news**



Architect's Drawing

# Addition planned for the Behrend Bookstore

by Barb Byers  
Collegian Staff Writer

The Behrend bookstore will begin renovation in late spring, and should be completed by the spring of 1988. The architect's rendering of the new design is pictured above. John Ream, Director of Opera-

tions, said the new bookstore will be "built and paid for by profits the store will generate." Profits from the University Park and Capitol campus bookstores will also contribute to Behrend's planned new bookstore. This does not mean, however, that the store is "out to gouge the students" for money, Ream said.

Robert MacDonald, Behrend bookstore manager, said, the current bookstore "is no longer adequate" to satisfy the increasing population of students at Behrend. The new, larger facility will be a "major improvement," MacDonald added.

The current store is approx-

imately 2,000 sq. ft., Ream said, and will be enlarged to 8,000 sq. ft., quadrupling in size. The new bookstore will extend into the Reed parking lot and into the grass area adjacent to it. Also added will be a glass enclosure which will serve as a lobby. This lobby area will "resemble a wintergarden, similar to a greenhouse," Ream said. The Erie

Metropolitan Transit Authority (EMTA) will pick up and drop off student passengers from the Reed building when the construction is completed, so this area will also allow students to "wait for the bus indoors during inclement weather," Ream said. Also in the plans is a second-floor access to the

new bookstore. The Behrend campus radio station, WBCR, will be relocated somewhere in the Reed building to allow for a stairwell to the bookstore in its place.

The new bookstore will be a definite advantage, MacDonald said, expanding the current merchandise and checkout facilities.

## ABC program (con't. from page.1)

As of January 20, efforts to include Dr. Adijewan as a guest lecturer haven't produced any definite results. Adijewan, 1986-87 Fulbright Scholarship recipient, is

Grimm, P.J. Brown, Dr. Art Costantino and Susan Blackheim have also assisted.

ABC encourages students, faculty and the general public to attend



Greg Goldsmith was instrumental in planning ABC's program.

a visiting professor at University Park. A native of Nigeria, he teaches social science 110 (The Africans) at Behrend via a T1 carrier.

Responsibility for organizing the event rests mainly with Goldsmith, students Michelle Greenwood, Edward Williams, Sean Fleming and Karen Munroe, program advisor Dr. Diana Hume George and club advisor Sandy Edwards. Jamie

the events. Following each lecture, receptions will be held for those who would like to meet the speakers and ask questions. A small admittance fee must be paid to view Roots, either at the door or in advance. Week-long passes will be made available. Dr. Primus' workshop is open to the public, but due to seating limitations anyone interested in participating must pre-register.

## First-Aid class presented

**Police and Safety**—On Saturday, Feb. 14, 1987, a Multimedia First Aid class will be presented at Erie Hall classroom 6 from 8:30 pm to 3:30 pm. The cost will be \$15.00 per person. You may sign up at the secretary's office in Erie Hall,

Health Services, or Police and Safety. Prepayment will insure your card is available the day of class. Please call Police and Safety at 898-6227 if you have any questions.

## Glennhill makes office changes

by Tracy Muffett  
Collegian Staff Writer

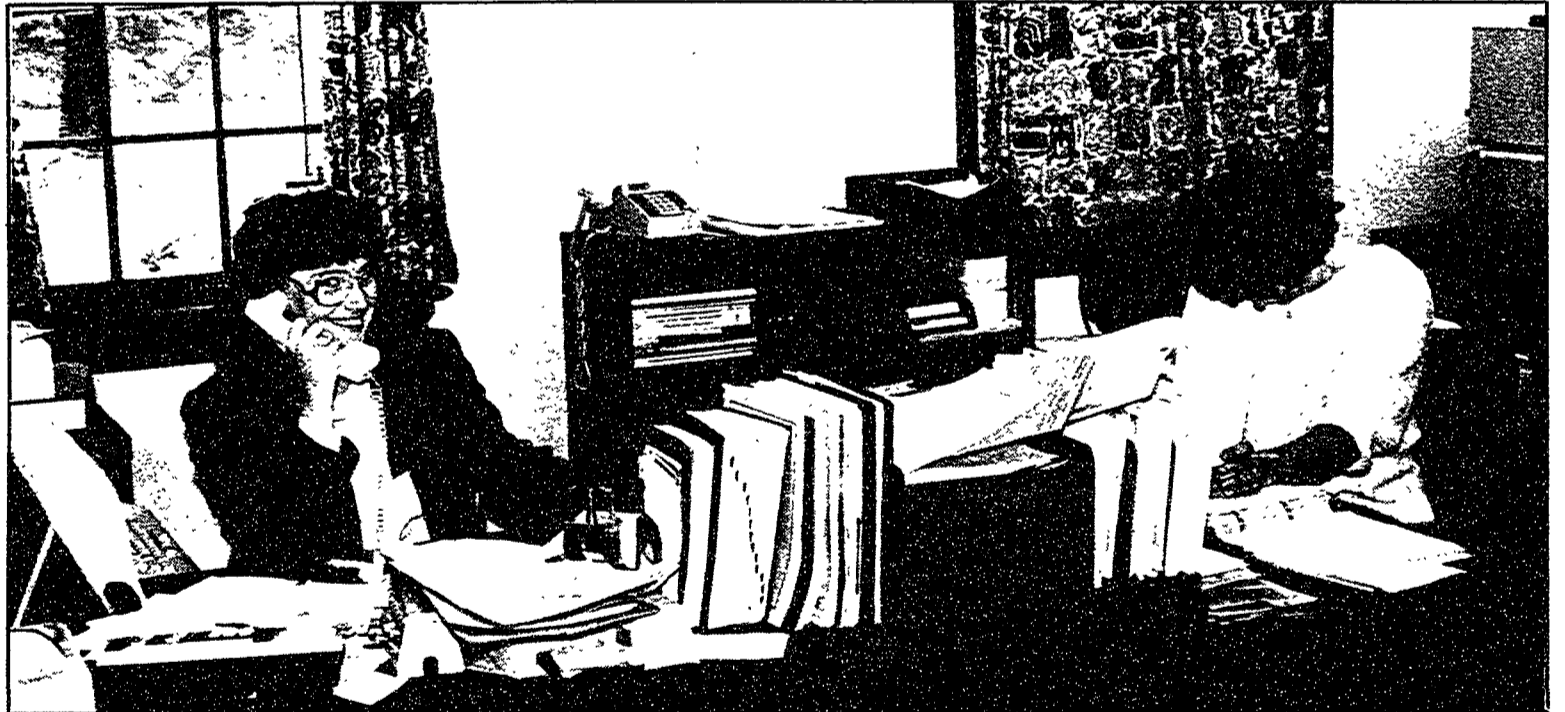
Several offices, including the Financial Aid Office and the Office of Development and Human Relations, will be relocating within the Glennhill Farmhouse in the near future.

The Financial Aid Office will be moving from its present location, upstairs in the South wing, closer to the Admissions Office in the North wing. The Office of Development and Human Relations, presently scattered throughout the building, will be consolidating in one wing. In addition to these two offices, the office of the Administrative Assistant to the Provost will be moving upstairs from its present location downstairs in the South wing. The Division of Undergraduate Studies and the Career and Placement Office have already moved out of the Glennhill Farmhouse and into the first floor of the Reed Building.

The Finance Office, Admissions Office, and Counselor's office are among those which will not be moving.

Supervised by Dean John Lilley, Dr. Burke, and physical planner John Ream, the relocations are being made in order to consolidate offices and Divisions and make them more accessible to students. The new locations will be much more convenient for the people who work in the offices, according to Jan Eston of Development and Human Relations. Although at present "everyone's moving everywhere" and even the people involved are not certain exactly when and where, "everyone will be in one place...secretaries will be with their offices (instead of in other parts of the building)...(the move will) bring some order to the building," Eston said.

The Glennhill Farmhouse relocations are part of an ongoing series of Division and administrative office relocations campus-wide, all designed to increase accessibility and convenience for students and faculty.



Jan Espin will soon be moving upstairs in the Glennhill farmhouse.

Photo by Rob Eggleston

## Lambda Sigma inductees notified soon

by Kevin Mills  
Collegian Staff Writer

The Behrend chapter of Lambda Sigma, a nationwide honor society, is now in the process of notifying prospective Behrend freshmen of its interest in them as possible future members. Lambda Sigma is not a fraternity or a sorority—it is a national honor society which, in order to obtain membership, one must meet certain academic and personal criteria. These are: 1. The student must be a freshman in college. 2. A GPA (Grade Point Average) of 3.0 or higher must have been obtained for fall semester 1986. 3. The student must be enrolled in a baccalaureate degree program. 4. The student must show leadership potential.

Qualified students will be receiving letters of notification within the month. The letter contains a form to fill out and an invitation to the

meeting of the Lambda Sigs in order for the student to see what the organization is really all about and whether or not it is for him or her.

This year, the Behrend chapter of Lambda Sigma performed a variety of services benefiting the community, including a food drive for underprivileged families in the area, a "Toy Drop" for needy children in the Erie community, and a holiday caroling trip to an area retirement home. In addition, Lambda Sigma provided a number of services to the Behrend College community, including a bake sale (which was held at the holiday Student Activities Fair) and the sponsorship of the "Care Packages" many of us received from our parents during Finals week.

"It's really fun, I like it a lot," says Lori Davison, a sophomore at Behrend.

## Confidential Counseling provided for students

by Susanna Jalosky  
Collegian Staff Writer

If you are struggling with a personal problem that you are unable to resolve, or if you simply need someone to talk to that isn't a relative or biased to your way of thinking, you should know that counseling is available to Behrend College students.

Personal counseling will be provided by Dr. Brenda Eastman and returning therapist Dr. Louanne Barton. Both counselors are here to provide a service to the students and will maintain confidentiality in whatever the counseling need.

Some of the concerns which may bring a student to counseling are career choices, important decisions, family pressures, relationship problems, loneliness, feelings of depression, and personal struggles. These are just a few of the things that may require counseling.

It isn't uncommon to encounter added stresses during this crucial time in a student's life. Students are urged to take advantage of this opportunity and may do so by stopping in or making an appointment with a counselor. Their office is located in the Administration Building, room 213. Dr. Brenda Eastman will be available Tuesday, Wednesday and Thursday. Dr. Louanne Barton is available Monday, 9:00 a.m. to 3:00 p.m. and Fridays 1:00 to 5:00 p.m.

Also coming up on February 2 at 12:00 in Lawrence 101 is a stress lab which will be open to anyone interested in stress management. For more information call 898-6162.