

**Student Voice:** "Do you think Libya's recent terrorist activity will result in a major confrontation between major powers?"

The recent upheaval of verbal threats and terrorist activity growing out of Libya is worrying many Americans. Although President Reagan's present response is a weave of scoldings and economic sanctions, how long will it be before military action becomes necessary? Will Colonel Muammar Khadafy lure America's Armed Forces into battle? This issue's Student Voice question asks: "Do you think Libya's recent terrorist activities will result in a major military confrontation between major powers?"



**Mike Donaldson**

we ought to nuke them and make them into a parking lot."

**Renee Wirth, fifth semester, Math:** "No, because no one else wants to get involved-like us."



**Ralf Letson**

that have been going on, Libya is going to push it to the point where other countries will not be able to take it anymore, and something will eventually happen. It's just a pot almost ready to boil over."

**Stacy Mills, second semester, DUS:** "Yes."



**Pat Dunegan**

**Pat Dunegan, second semester, Business:** "It's probably going to be like it was between Egypt and Isreal. We're just going to stand on the side. We're not going to do anything."

**Mike Donaldson, eighth semester, Management:** "I think



**Renee Wirth**

**Ralf Letson, sixth semester, Human Resources Management:** "Yes, I feel that with the actions



**Stacey Mills**

**Studio Theatre puts heart on the line**

Soon love will be in the air, but Behrend's Studio Theatre is already producing the mysterious amour that entices the world.

When Cupid makes his annual appearance, so too will the Studio Theatre premier on Feb. 14 in Spring Semester staging two one acts encapsulating love's fervor.

With "Love: Variations on a Theme" in mind Tony Elliot, Studio Theatre Director, chose "Winners" by Brian Friel and "Here We Are" by Dorothy Parker as the two one acts the theatre troupe will perform.

In addition to the magic of Feb. 14, Elliot chose the plays with Behrend's audience in mind. "Both plays are generally light and feature young couples in love," he noted. "The plays are down to earth and real life so our audiences should be able to relate well," Elliot added.

Behrend's Studio Theatre also factored into the decision. The aesthetic beauty and size of the theatre compliment the intimacy of both shows, Elliot explained.

Friel's "Winners" takes place on a hillside in Ireland. There, a

pair of young lovers, Mag and Joe, plan their lives full of hope and potential, while a pair of observing narrators reveal the tragic outcome of this ordinary day.

Previously performing in the Erie Playhouse production "America Sings", Tina Kierzek (Mag) makes her first appearance on Behrend's stage.

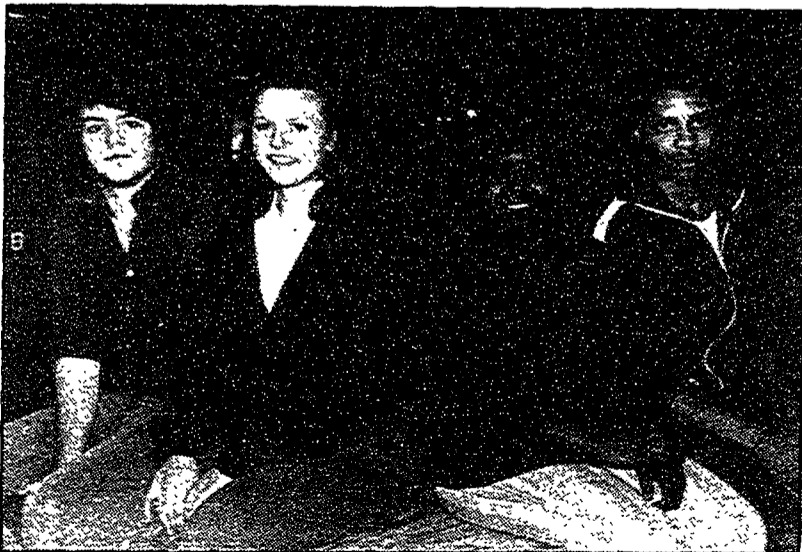
Fred Schleicher also premieres at the Studio Theatre as Joe, Mag's mate.

The narrators, Steve Ciabattoni ("The Dining Room") and Brad Hirsch, also a first at the Studio, are essentially uninvolved in the action but comment on the happenings informing the audience on Mag and Joe's future.

"Here We Are" is Dorothy Parker's rendition of a young couple's post-nuptial experience. The ceremony is over, but this naive young couple, on the train to their New York City honeymoon, is full of anticipation and anxiety, with hilarious results.

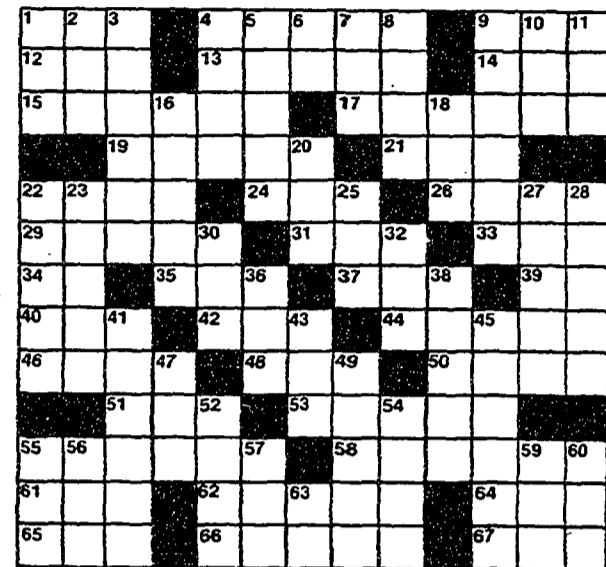
The newlyweds are both veterans of the Studio Theatre. James Millard ("The Me Nobody Knows") portrays the husband with Leslie Webb ("This Joint Is Jumpin") portraying his spouse.

An appropriate production for the Behrend stage, "Here We



L-R: Fred Schleicher, Tina Kierzak, Leslie Webb & James Millard

*Crossword Companion*



**ACROSS**

- 1. Flaw
- 4. Plebe
- 9. Cap
- 12. Metal
- 13. Odor
- 14. S.E. State (abbr.)
- 15. Household (Literary)
- 17. Beetle
- 19. Happening
- 21. \_\_\_\_\_ Carson
- 22. Wise
- 24. Help
- 26. Tableland
- 29. Utilizers
- 31. The Raven (Poet)
- 33. Green
- 34. Inanimate pronoun
- 35. Price
- 37. Tree
- 39. Eastern State (abbr.)
- 40. Number
- 42. Water barrier
- 44. Pro
- 46. Great Lake
- 48. Rove
- 50. Concern
- 51. Against
- 53. Jury
- 55. Beautiful View
- 58. Used as medicine
- 61. Var. of -al (inf.)
- 62. Hanging rope
- 64. Watch
- 65. Pig Pen
- 66. Anti-knock fluid
- 67. Auricle

**DOWN**

- 1. Mother (slang)
- 2. Form of be
- 3. Back out
- 4. Close in
- 5. Stadium
- 6. Perform
- 7. Uncle (Prov. Eng.)
- 8. State
- 9. Former
- 10. Indicating beam (comb. form)
- 11. Daughters of the American Revolution (abbr.)
- 16. Veer
- 18. Goal
- 20. Edge
- 22. Group of rooms
- 23. Flower
- 25. Male deer
- 27. Flavor
- 28. Knowledgeable
- 30. Unhappy
- 32. Fairy
- 36. Sack
- 38. Clubbed

- 41. Carefully
- 43. Chart
- 45. Luggage
- 47. Age
- 49. Flower
- 52. Number
- 54. Carol
- 55. Relative (slang)
- 56. Feline
- 57. Bed
- 59. Edu. Group (abbr.)
- 60. Ever (Poetic)
- 63. Exclamation

Answers page 4

**UNDER THE WEATHER?**



**No Problem!**

When the weather's got you cold, just pick up the phone and call Domino's Pizza. We'll deliver hot, delicious pizza in 30 minutes or less. No problem!

**899-1999**

Eastway Plaza

Open for lunch  
11 am - 1 am Sun. - Thurs.  
11 am - 2 am Fri. & Sat.

Our drivers carry less than \$20.00.  
Limited delivery area.



Are" takes place on a train with limited space. Without much movement, "...acting is vital," Elliot said.

The alternate winter diversion, "Love: Variations on a Theme" opens on Valentine's Day and continues on Feb. 15, 19, 20, 21, and 22 at 8:00 p.m. with a 2:30 p.m. performance on Feb. 23. Ticket prices are; students \$2, other students and senior citizens \$4, and general public \$5.