

OPINION/FEATURE

Cancellation Causes Confusion

I was in shock as I drove into the college the Tuesday before last. The news had just come over the radio that Behrend was closed until 10 a.m. except for "essential personnel". Subsequent announcements stated that the school was closed for the day. I suddenly realized I didn't know where or when to tune in to find if Behrend was to be open or closed for any given day.

There is no "set time" to tune in. John Ream, Director of Operations, states that the announcement goes out "as soon as we determine we can't open the campus." Several items are considered in this evaluation, including the condition of the roads

to the campus, the condition of the campus itself, and the forecasted weather conditions.

Who makes the decisions to close the campus? Ream comments, "It is ultimately the provost in consultation with several other people." This also includes reports from the National Weather Bureau.

The Tuesday before last, the announcement came out later than usual. Ream explains, "At 5 a.m. there was no snow or wind. Between then and 7 a.m. the wind and snow picked up...we also expected Station Road to be cleared."

When asked if students could call to find out if there were

classes, the director stated, "Yes, they may, but we wish those calls would be kept to a minimum before 8 a.m." Prior to 8 a.m. an answering service refers students to Police and Safety. This service is set up mainly for emergency calls.

Most Erie radio and television stations are contacted in the event of a closing. The television stations include WICU (ch. 12), WJET (ch. 24), and WSEE (ch. 35). AM radio stations include WJET, WRIE, WHYP, WEYZ, and WLKK. FM radio stations include WCKK, WLVU, WSEG, and WHYP.

Barrett Parker
Collegian Staff Writer

Library Hires Former Student

by Julie Potochny
Collegian Staff Writer

There is a new full-time employee in the Behrend College Library this semester. Patty Altieri who worked as a student library aide since the fall of 1980, occupies the position of reference clerk.

Her duties include sitting at the reference desk to answer questions, compiling bibliographies for various subjects, correcting English 15 library work books, and conducting library tours.

Altieri's main goal is to get

students more involved in the library. Altieri says, "More students should exploit the library's resources for their own personal enjoyment."

To further her cause, Altieri has organized many programs. Beginning this month there will be a monthly viewing of movies that have been adapted from a novel or play.



Patty Altieri
Library Reference Clerk

Movies include a *Tribute to John Steinbeck*, a play by Tennessee Williams, and Bernard Shaw's *My Fair Lady*. Through Valentine's Day-week, there will be a series of romance lectures presented by Behrend professors.

New features that can be attributed to Altieri are the bulletin boards and display cases. There is also a Current Event board that is changing weekly. Altieri is in charge of most of the promotional events and programs for the library.

Altieri plans to attend the University of Pittsburgh this fall to earn a Master's degree in Library Science. She graduated last semester from Behrend with a degree in History. Altieri wants to come back to Behrend as a full-time reference librarian when the proposed library is completed.

Behrend Nightclub Opening Soon

by Kevin Moore
Collegian Staff Writer

Look out Ramada Inn Happy Hour and look out Billy's in the Hilton Hotel...it's Bruno's Place! Great entertainment, good food and drinks, and a first class clientele...you!

Hey, don't be scared off by Bruno's impressive attributes. Bruno's takes pride in serving everyone regardless of age or grade point average. You don't need more than a couple of bucks for the occasional cover charge and the entertainment comes to you at no additional charge.

Bruno's is an innovative nightspot on the campus of Penn State-Behrend. Every Tuesday night beginning Feb. 5, there will be a long awaited "night club" on campus. Faculty and students alike are cordially invited to get to know each other better in an informal atmosphere.

Bruno's will be complete with The Wooden Nickel bar, bartenders, snack foods, and nightly entertainment. The grand opening, on Feb. 5, will feature comedian and juggler Edward Jackman. Jackman, will juggle dangerous objects while balancing a ten-speed bicycle on his forehead!

Future entertainment will be just as wild and exciting with Trivial Pursuit Parties, Old Movie Classics, an illusionist, and The Godzilla Film Festival, featuring some of the infamously dubbed Japanese classics.

The Wooden Nickel bar is sure to rival any of the other hotspots on the campus, including the Goggle Palace. The Wooden Nickel will offer its patrons a veritable bevy of liquid refreshments, everything from Diet Coke to

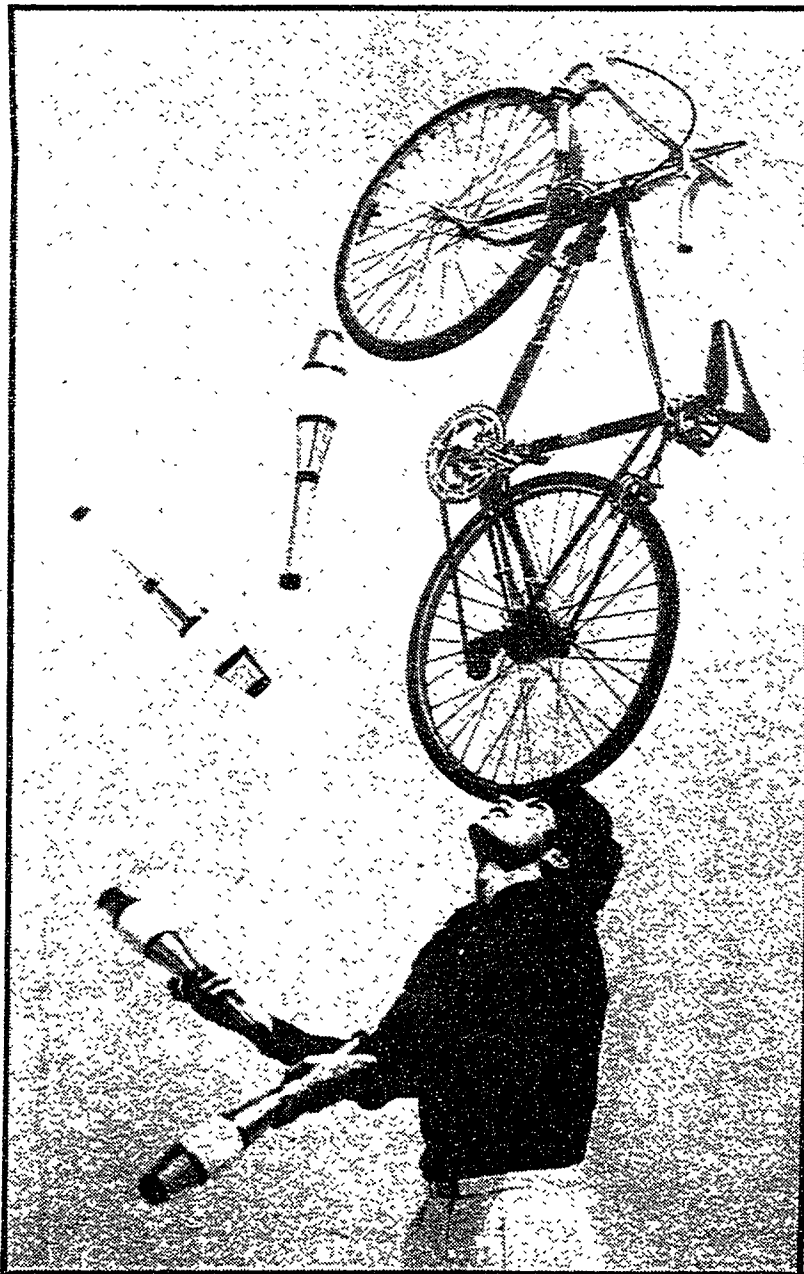
strawberry daiquiries (non-alcoholic variety.)

Jamie Grimm, Assistant Dean of Student Affairs, said the name for Bruno's Place came from the canine companion of Mary and Ernst Behrend, Bruno.

Jamie stated, "Everyone is really into the night club scene and we're going to do our best to give the students a night club. Good food, good friends, and great entertainment is an excellent alternative to the student nightlife here at Penn State-Behrend."

Grimm added, "I'm really excited about Bruno's, everything about it is neat, the idea, the possibilities, the whole thing!"

So set aside Tuesday, Feb. 5 on your calendars and get ready for the extravaganza. Like they say in the theme from "Cheers", "...and they're always glad you came. You want to go where everyone knows your name." See you there!



Edward Jackman... Comedy and other dangerous stuff.

What's a true nature lover
doing with an animal like this?



JOHN
BELUSHI BLAIR
BROWN
CONTINENTAL
DIVIDE

AN AMBLIN ENTERTAINMENT PRODUCTION
with ALLEN GICORWITZ
Directed by JOHN DAHLER
Produced by JOHN DAHLER and BRUCE BRILLMAN
Screenplay by JOHN DAHLER and BRUCE BRILLMAN
Music by JOHN DAHLER

Feb. 6, 8, 9, 10
9:00 p.m. Reed 117