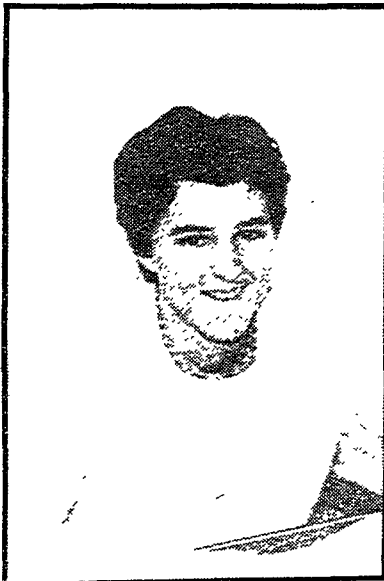


SPORTS

Sobotta to Lead Lady Hoopers

by Richard Larson
Collegian Sports Editor

Penn State-Behrend recently hired Karin Sobotta as the new women's basketball team head



Coach Karin Sobotta
Head Basketball Coach

coach. Originally from Her-
miston, Oregon, Sobotta received

a four-year basketball and tennis scholarship to the University of Idaho.

As a four-year starting point-guard, she and her teammates finished in the top 16 in the Division II AIAW National Tournament in all but her freshman year.

As a tennis player, she competed in the Nationals for four years competing in singles and doubles matches. She finished fifth in doubles in 1982.

Sobotta returned to the University of Idaho to work toward a masters degree in Sports Science, concentrating on Sports Psychology. While at Idaho she was a graduate assistant in basketball in which she scouted talent for recruitment.

After earning her M.S., she began her search for a position in coaching and teaching at the college level. She chose Behrend after receiving offers for Assistant Coach from Columbia University, University of Rochester, and Arizona State, and head coach from Yakima Valley Community

College in Washington, Linfield College in Oregon and Behrend.

She chose Behrend because she feels it will give her a chance to coach and teach physical education.

Sobotta feels women's basketball in the east is becoming better and she wants to be a part of it.

Sobotta has 11 women playing basketball this season to build a team for now and the future. With three seniors, Mindy Stasenko, Missy Stasenko and Kathy Ott, the team looks promising for this season.

Sobotta's goal is to generate more interest in women's sports here, build more solid teams for the future, and build a good recruiting program.

Earlier this year the N.A.G.W.S. (National Association of Girls and Women's Sports) made a ruling, decreasing the size of the basketball for the women's game.

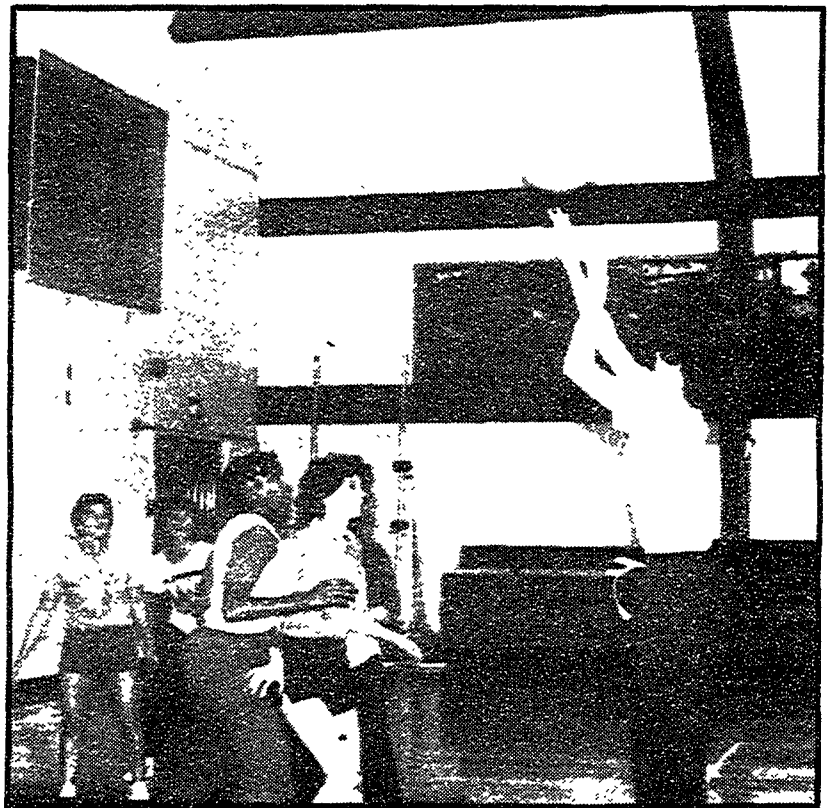
The ball, one inch smaller in circumference and lighter in weight, will give the women's games more excitement. Since

women's hands are usually physically smaller, handling the ball will be easier and shooting percentages will increase.

Some feel it is a put-down to women's sports, like they can't play with the "big boys," but actually it isn't. It is just a move to help women come to the same competitive level and have the same enthusiasm as men's sports.

Sobotta likes the new ball and thinks this could lead to the women's own slam dunk.

The ladies begin their season on Nov. 28 at Carlow College and then home on the 30th and Dec. 1 for the Ramada Inn of Erie Ladie's Classic, featuring Buffalo State, 21-6 in 1983, Seton Hill, 8-8 in 1983, Malon College, 16-10 in 1983 and the Lady Cubs.



The Women's Basketball team is hard at work preparing themselves for the coming basketball season.

Come Worship With Us

OFF CAMPUS WORSHIP OPPORTUNITIES

Bus Transportation Available For 11:00 a.m. Services
Bus Leaves Reed 10:15 a.m. Sundays

MESSIAH LUTHERAN CHURCH

Eastern and Gray Avenue
Wesleyville, Pa.
Phone 899-6386

The Rev. Martin Roth, Pastor*
Sundays 8:15 and 11:00 a.m.
Sunday Church School 9:30 a.m.

ST. JAMES R.C. CHURCH

2635 Buffalo Road
Erie, Pa.
Phone 899-6178

The Rev. Robert W. Cohan, Pastor
Sunday Masses 7:30, 9:00
10:00, 11:00 a.m.
12:15, 5:00 p.m.

WESLEYVILLE BAPTIST CHURCH

Buffalo Road and Market Street
Wesleyville, Pa.
Phone 899-9243

The Rev. George Schoonmaker, Pastor*
Sunday 11:00 a.m.
Sunday School 9:30 a.m.

WESLEY UNITED METHODIST CHURCH

3306 South Street
Wesleyville, Pa.
Phone 899-3302

The Rev. George Schmidt, Pastor
Sunday 8:15 and 11:00 a.m.
Sunday School 9:30 a.m.
Evening Fellowship 6:00 p.m.

EAST ERIE ASSEMBLY OF GOD

2653 Saltsman Rd.
Erie, Pa.
Phone 899-5247

The Rev. Cliff Hamilton, Pastor*
Sunday 11:00 a.m. and 7:00 p.m.
Christian Education 10 a.m. to 11 a.m.

ON CAMPUS WORSHIP OPPORTUNITIES

ROMAN CATHOLIC MASS

Saturdays, 5:30 p.m.

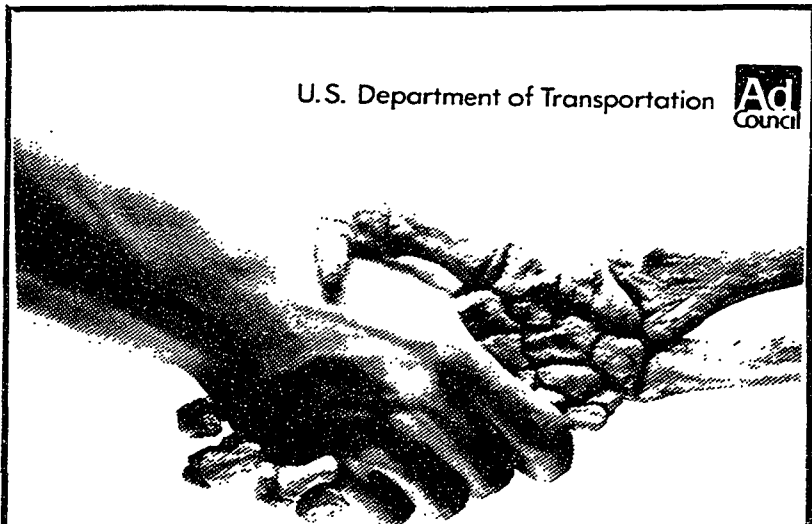
R.U.B. Student Lounge

PENN STATE-BEHREND CAMPUS MINISTRY

*Participating Campus Ministry Office Clergy



U.S. Department of Transportation



**DRINKING AND
DRIVING
CAN KILL A
FRIENDSHIP**