

Know Where To Look For Information

Who doesn't want to be well-informed? If you are interested in activities, meetings, and subjects of general interest, don't forget to consult the following:

THE BEHREND COLLEGIAN

The "Behrend Collegian" newspaper, a student publication under the coordination of a faculty advisor, keeps the Behrend Community abreast of the latest news. Watch for it at the RUB Main Desk. And, if you are interested in writing, stop by the Collegian office, first floor RUB, and volunteer your services.

RIDE BOARD

If you want to go home or visit out-of-town friends this weekend, and are wondering how to get there, you may want to consult the Ride Board, first floor RUB near the Back Room. You might find someone who is going your way.

STUDENT INFORMATION SYSTEM (SIS)

The television sets you have probably noticed around campus are not all broadcasting daily network programs. Many of them are part of the Student Information System, better known as SIS, which is coordinated by Mr. Paul Bailey of the Instructional Communications Department. SIS provides a wide variety of information about meetings, activities, financial aid deadlines, and much more. Take a few minutes to watch, and see for yourself.

BULLETIN BOARDS

You can find a good deal of valuable information on the bulletin boards situated around campus. The bulletin boards, first floor RUB, offer information about campus news, notices, and items for sale. You can find out about part-time, full-time, and summer jobs on the Placement bulletin board, second floor RUB. The bulletin boards throughout the other campus buildings provide

vide information about your academic and other interests. Don't pass them by without taking a look.

MAILBOXES

Besides long-awaited letters from family and friends, the resident students' mailboxes located on first floor RUB near the Mailroom sometimes contain notices and flyers with important and valuable information. Don't toss them in the basket without reading them - you don't know what you might be missing!

STUDENT ACTIVITIES CALENDAR

The Student Union publishes an activities calendar each month (excluding summer term). This calendar outlines activities, athletic events, and other important dates. It contains information you shouldn't overlook! Pick one up at the RUB Main Desk.

WBCR (BEHREND COLLEGE RADIO STATION)

The Penn State-Behrend Radio Club is responsible for the WBCR programming. The station provides recreational and educational radio programming for the campus. Tune in when you have the chance!

If you can't find the answers to your questions through the above sources, you may want to consult one of the administrative offices, your RA, or area coordinator.

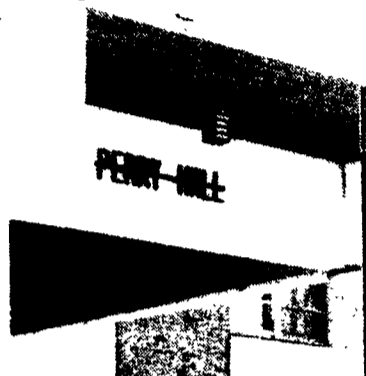
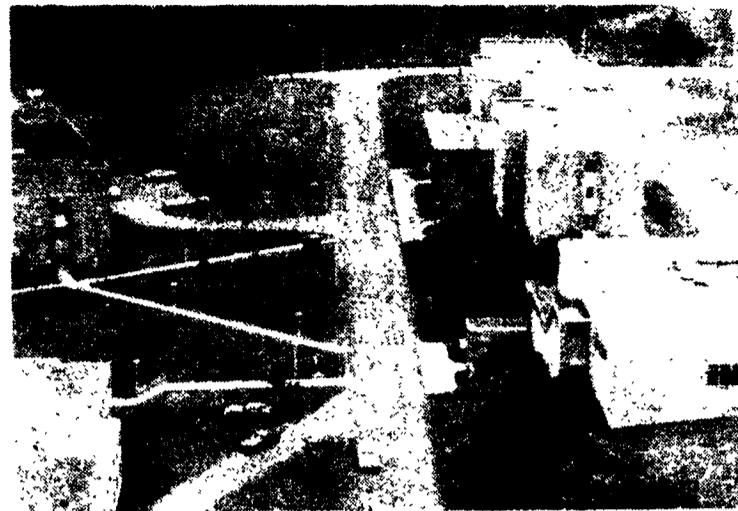
Final Exam Statement

A schedule for final examinations is published about the sixth week of the term and will be available in the Records Office.

Students should not make advance plans to leave the campus at the end of the term until after the final exam schedule is published. The final exam period is a required portion of the scheduled term.

Residence Hall Life

Home away from home for a resident student at Penn State-Behrend is one of the three residence halls on campus: Perry, Niagara, or Lawrence Hall. Meals for the residents on all three dorms are served in Dobbins Hall. As in every living situation such as this, each resident must be aware of his/her rights and responsibilities. You can find these, along with general information, by referring to the Residence Hall Handbook and the Policies and Rules for Students, 82-83, p. 38.



Special Events And Activities

The Penn State-Behrend community celebrates special events throughout the year. Some of these events are held university-wide, while others are unique to Penn State-Behrend. All students are encouraged to participate in the festivities.

OKTOBERFEST HOMECOMING

The Office of University Relations, The Athletic Department and the Student Activities Office have developed an Oktoberfest/Homecoming Weekend that includes social activities, athletic events and a lot of autumn fun for students, parents and alumni.

ALL-UNIVERSITY DAY

Every fall, the University sponsors an excursion to University Park to enable Penn State-Behrend students to take part in All-University Day. All of the Penn State campuses participate in the event which provides an opportunity for Behrend students to become acquainted with the University Park Campus, as well as to attend a football game and a concert.

HANGING OF THE GREENS

The Hanging of the Greens is an annual Christmas ceremony at Penn State-Behrend. A wreath is placed on the Behrend grave,

and a Christmas message is presented to the University community in the chapel at Wintergreen Cemetery. Carols are sung, prayers are said, and best wishes are extended for a pleasant holiday.

CHRISTMAS BAZAAR

Clubs and Organizations plan a three-day bazaar in mid-December, generating a feeling of holiday spirit while providing students, faculty and staff with an opportunity to purchase Christmas treats. The Bazaar is held on the first floor of the Reed Student Union.

WINTER FESTIVAL

The highlight of the winter term is the Winter Festival sponsored by the Student Union Board. Students have a chance to participate in skiing and tobogganing races, a snow sculpture contest, and other activities. The winter celebration includes a semiformal dance, providing the perfect touch to a winter weekend.

SPIRIT WEEK

A relatively new tradition at Penn State-Behrend is Spirit Week, encompassing a full week of activities that encourage an exciting feeling of spirit on campus. Clubs and organizations plan pep rallies, dances, halftime routines at basketball games and other similar activities. Spirit Week takes place in January and culminates in a home basketball game held on a Saturday evening.

SPRING WEEK

The energy and enthusiasm of every member of the Penn State-Behrend community are involved in the preparation and festivities of Spring Week. The celebration of spring is expressed through a variety of social and cultural activities that are held on the Penn State-Behrend Campus.

HONORS AND AWARDS CONVOCATION

Those students who have contributed throughout the year to co-curricular activities or who have achieved academic honors are recognized at the Honors and Awards Convocation held in the spring. Faculty, staff, family, and friends join together to honor the award recipients.

Wonder Where Your Next Meal Is Coming From?

The Office of Housing and Food offers food services for both commuters and residence hall students. The commuter cafeteria, "The Gorge", is located on the second floor of the RUB. Hours during the term are:

Monday through Friday
9:30 a.m. - Coffee and Donuts
11:00 a.m. - 1:30 p.m. - Lunch
Sunday through Thursday
8:30 p.m. - 11:00 p.m. - Sub and Pizza Shop

The food and drink machines located in the commuter cafeteria are available for use whenever the RUB is open. (See classified ads in this publication for RUB hours).

Dobbins Hall serves meals to

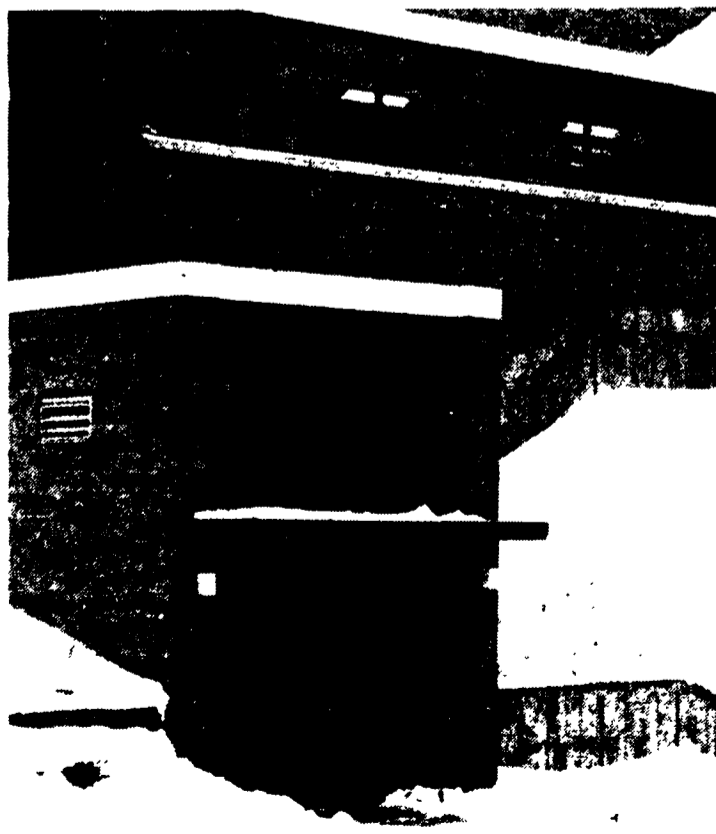
all residence hall students and students with meal tickets according to the following schedule:

Monday through Friday
7:00-8:00 a.m. - Breakfast
8:00-9:30 a.m. - Club Breakfast
11:05 - 12:45 p.m. - Lunch
4:30 - 6:30 p.m. - Dinner
Saturday
8:00-9:30 a.m. - Club Breakfast
11:30 a.m.-12:45 p.m. - Lunch
4:30 - 6:00 p.m. - Dinner
Sunday
8:30-10:00 a.m. - Club Breakfast
11:30 a.m. - 1:00 p.m. - Brunch
4:30 - 6:00 p.m. - Dinner

Students may buy a meal ticket for any meal at the door and may purchase meal tickets for the term in the Office of Housing and Food Services in Dobbins Hall.



The commuter cafeteria is located on the second floor RUB.



Dobbins Hall provides meal service to resident students and students with meal tickets.