

Behrend Collegian

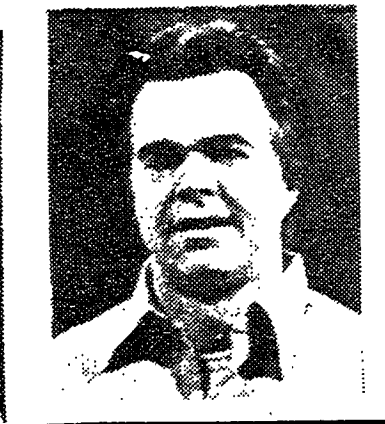
Published by the Students of the Behrend College of the Pennsylvania State University

VOLUME XXXIII No. 4

Station Road, Erie, Pa. 16510

Thursday, March 15, 1979

BEHREND PLAYERS



Shadow Box Nixed; Vanities Underway

Behrend College's *The Shadow Box* emerged as the ninth top non-commercial play in the eleventh year of competition of the national American College Theatre Festival. The Festival is produced by the American Theatre Association, which includes over 430 colleges and 12,000 students.

From thirteen regions, eight were selected to participate in the National Festival. Hofstra University's *Summer of the Seventeenth Doll* was the eight selection with Behrend's *The Shadow Box* as the first runner-up. As first runner-up, *The Shadow Box* is the alternate play in case any of the top eight can not attend the National Festival.

Our region includes all of Pennsylvania, New York, and New Jersey. In actual competition, the Behrend Players competed against forty schools from this region to emerge as one of the top five at University Park. The regional competition lasted from January 10-14, and included workshops and seminars as well as the five performances. The plays were evaluated and

judged; and a panel of evaluators met in Arizona on February 18, to select the representative for the National Festival, held at the Kennedy Center in Washington, D.C.

Presently, the Behrend Players are beginning work on the Spring production of *Vanities*, by Jack Heifner. This contemporary comedy explains the lives of three women and how they do or do not change over a period of ten years. The cast consists of Sue Klein as Joanne, Carol Kuhl as Mary, and Becky Zellefrow as Kathy. The play opens Friday May 4 at the Studio Theatre.

Free Money

Students are reminded to apply for financial aid for the 1979-80 academic year because some programs have been expanded, it is estimated that many students who were not previously eligible may be able to receive some funds for 1979-80.

Application for State (Pennsylvania and other states) Grants, BEOG Grants and university aid for the 1979-80 academic year are available in the Office of Student Affairs. Pennsylvania Residents should file the combination PHEAA State Grant-BEOG Application by May 1, 1979, at the latest. All Students who wish to apply for academic grants, loans work-study and other aid through the university must file a 79-80 Financial Aid Form and separate university aid applications. The filing date for the Financial Aid Form was listed by the university as February 15, 1979. However if a student has not yet filed, he or she should still do so. The university aid applications must be received in the Office of Student Affairs and Aid at University Park by April 1, 1979. Students may submit the

completed university applications to the Behrend Office of Student Affairs to be forwarded to University Park.

The deadline to apply for summer aid; including NDSL and work-study, through the university is March 15, 1979.

State Grants have varying deadlines. Students who have questions pertaining to the financial aid for either the Summer term 1979 or the 1979-80 academic year, should please contact the Office of Student Affairs.

Student Senate Meets

There was a student senate meeting Monday night, March 12, in the seminar room behind the RUB Lecture Hall.

The first topic discussed was the dance for the Warren-Behrend Athletic Association. Everyone at Behrend, including alumni, are welcome. The Dance will be held Friday, April 20, from 9 p.m. - 1 a.m. at Rainbow

Gardens in Waldameer Park.

The tickets are ten dollars per couple and can be obtained through Dr. Sweeting, Mrs. Babcock, or Mike Joyce. Entertainment will be provided by "Justin Time," an Erie group that plays various kinds of music. Next the Senate discussed future plans of the organization. There will be a lower division meeting next Tuesday, March 20, at 7:00 p.m. in the faculty cafeteria. There are tentative plans for a small concert in late March or early April that will feature Tom Chapin of Make a Wish fame.

The Senate has changed the name of "Spring Arts" to "Spring Week" due to the lack of interest in the arts. Plans are still being made to have a "battle of the bands" during Spring Week on Saturday, May 5. Gannon, Mercyhurst, and Edinboro have been challenged to bring their best bands.

The Senate also unanimously voted that the office hours for the Senate officers be voluntary and not mandatory. The next student Senate meeting is Monday, March 19, at 7:00 p.m. in the Seminar Room in the RUB.

Increase in Admissions

Behrend College should expect a significant increase this coming Fall in both the freshman class and in upper division enrollment. According to Professor Anthony Salvia, Assistant Dean of Undergraduate Studies, offers of admissions and paid accepts of admission are running 25 per cent ahead of last year. At the present rate, Behrend may have a freshman class of 550-650 students, compared to 475 this year. Last March 1, 262 students had sent paid accepts; this year there have been 349.

In addition, Behrend is retaining more juniors and seniors than in past years, and there are more transfers from other campuses of Penn State and from other colleges and universities. Upper division enrollment this fall may be 15-20 per cent of the student body, a significant increase.

The greatest increase in admissions has occurred in Business Administration, Engineering, Liberal Arts, and Science. Behrend offers baccalaureate degrees in all of these areas except engineering.

While it is difficult to identify causes for the increased interest

in admission to Behrend, Professor Salvia said that he and Professor Benjamin Lane, Head of the Office of Student Admissions, have worked closely with high schools, visiting many in Western Pennsylvania.

There have also been many visitors to Behrend, open houses, and much more in the way of follow up calls and mailings to students who have applied for admission or asked for information. Salvia and Lane have this year emphasized personal contact with prospective students.

Faculty members and students from the academic divisions also visited most of the Penn State campuses last Fall to recruit upper division majors for Behrend.

The larger enrollment in the Fall will cause some problems. Dorm spaces are already filled, and effort is underway to find more off-campus housing for incoming students. The large freshman class will also cause problems with service courses, especially in English and math. But Professor Salvia points out that these are the kinds of problems Behrend likes to have.

Behrend nursing program to close

Penn State has announced that, in view of Hamot Medical Center's decision to cut off financial support of the nursing program at Behrend College, the program will be discontinued at the end of Spring Term 1980. No currently enrolled students will be affected.

"When Hamot asked Penn State to start a two-year nursing program at Behrend, the Medical Center's Board of Trustees voted unanimously to assure supplemental financial support for Behrend College of \$100,000 per year on a continuing basis," said President John W. Oswald.

In 1974, when the Behrend nursing program was begun, with financial support from Hamot, the Medical Center discontinued its own diploma in nursing.

Last March, Hamot officials notified Penn State that the Medical Center's support of the program was being withdrawn, effective in March 1980.

"Penn State is unable to pick up Hamot's share of the cost of

the nursing program, especially at a time when inflation is rising rapidly and the University is having its own severe financial problems." Dr. Oswald added. "We regret very much that elimination of this program is necessary."

Dr. Oswald emphasized that the decision on the nursing program in no way lessens Penn State's strong commitment to Behrend College. "We will continue to provide quality education to its students and to be responsive to the needs of the Erie area," Dr. Oswald said.

In a letter to Donald S. Leslie, Jr., president of Hamot's Board of Trustees, Dr. Oswald noted that the joint venture with Hamot has been "a valuable and fruitful one." To date, the program has graduated sixty registered nurses. He noted that other nursing programs in the Erie region may meet "the challenge of supplying the flow of nurses at the associate degree level."

PLAYERS

