

Mike Mucciarone who wrestles in the 158-lb. weight class is seen here in action against Shenango Valley in the junior varsity's only home match.

Behrend Places 7th Swift & Vollant-2nd

Behrend's Ashley Swift (150 lbs.) and Brian Vollant (167 lbs.) gained two second place medals for the Cubs as Behrend placed seventh overall in the Ashland Invitational Tournament last Saturday.

Swift, who was seated fourth in his division, wrestled his way to the semi finals undefeated. In the semi finals, Swift lost to top seeded Hutchinson from Edinboro 2-0. Hutchinson used good leg riding technique to keep Swift under control a lot of the match. The only scoring occurred in the third period when the Edinboro grappler gained a two point near fall, Swift, wrestling with a more disciplined style than his usual

spirited almost reckless technique, then met Ashland's Clemens. Although the final score was 5-1, Swift and Clemens were tied 1-1 with 10 seconds remaining in the final period. Clemens came in for a takedown that was countered by Swift who somewhat lost his balance. Clemens quickly took advantage, gaining a takedown and a near fall in the final seconds to win the contest.

Brian Vollant was seated third in the 167 lb. division and he too wrestled his way undefeated to the semi finals. Undefeated Vollant met another undefeated wrestler from Edinboro named Watkins. It was a close match all the way until the middle of the

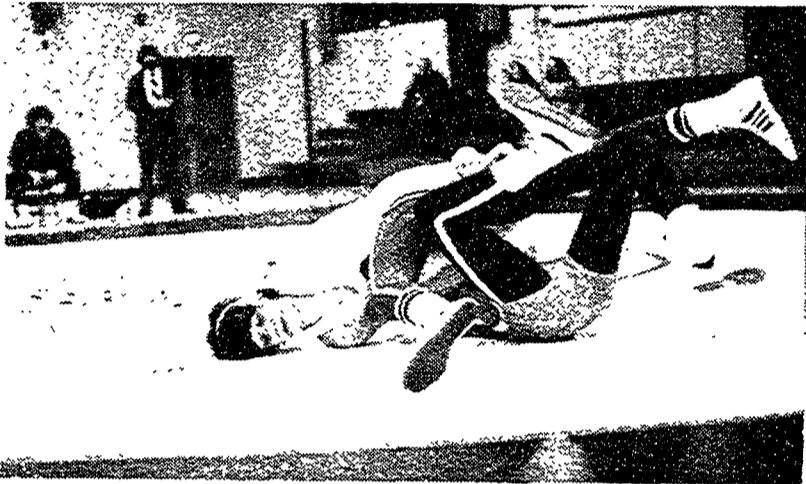
third period when Vollant, leading by one point, pinned Watkins and moved on to the finals. Vollant lost 6-0 in the finals to Ashland's Hissa. The match was close up to the third period when Vollant, reached up to adjust his head gear and Hissa promptly took advantage of the loose arm.

Greg Wozniak also made it to the finals where he was overpowered 6-0. In the consolation match, Wozniak lost to Ashland's Dimarco 2-1, the one point margin coming from a leg riding technique that gave the Ashland wrestler a riding time advantage although coach Onorato questions the legality of Dimarco's riding style.

Out of the nine Cub wrestlers that competed in the 16 team tournament, seven scored points for Behrend. Onorato was very pleased with Behrend's performance stating, "We were up against some good wrestling schools and when we lost, we got beat by good wrestlers doing good things."

The Cubs will be hurt by the loss of Alan Volkman who injured his shoulder in the Ashland Invitational. Behrend has been hurting all year in the upper weights. With Volkman out, the Cubs now lack a Heavyweight, a 190 lb. contestant and a consistent wrestler at 177 lbs. There is some good news, Alir Carter is back in top shape after a brief illness that caused a poor showing at Ashland.

Next Saturday at 2 p.m., the Cubs will wrestle Ryerson in a free style match. Free style is used by many foreign countries and in the Olympics. The major difference between Olympic free style and American Folk style (what Behrend usually wrestles) is that it's possible to lose points if your opponent exposes your back to the mat. Depending on circumstances, it's possible to lose one, two or three points. The other rule changes affect point values for various scoring moves: A takedown is one point, a reverse is one point and an escape is no points. In Olympic free style, each period is started with both wrestlers standing. Also, according to Onorato, "Stalling is not only legal, but essential." This free style match is something coach Onorato has scheduled to provide some variety for faithful denizens of Cub wrestling. So, no matter how blown out you are after Friday night, the match should be interesting.



Terry Peterson in action at the last junior varsity home match. The junior varsity team lost 34-15 to Shenango Valley.

Cubs Fall Again

The Cub Cagers fell to Grove City 79-63 last Tuesday before a sparse but enthusiastic crowd. Behrend's record now stands at 2-12 on the season with eight games remaining.

In the first half, the Cubs came out shooting—and missing, while Grove City was finding holes in the Behrend man-to-man defense. After five minutes of play, Grove City led 14-4 a lead that would last them the game. For the rest of the first half however, Behrend switched to a 1-2-1 zone that slowed Grove City's scoring fervor. In the mean time, the Cubs eased their offense into gear, nearly matching Grove City point for point and turnover for turnover. The Cubs showed some good hustle late in the first half but their problem was once again poor shooting.

Although Grove City was consistently taller than Behrend, the Cubs did an excellent job defensively under the boards. Both Jeff Gillette and Larry Szoszorek did a fine job blocking out the Grove City big men making the game nearly even under the boards.

Down 36-26 at half time, the Cubs started the second half in the same manner as the first. In the first five minutes, Grove City scored five points to Behrend's two, making the score 47-28.

Both teams had been switching defenses from a 2-1-2 zone to a half or full court press. With about five minutes gone in the second half, Behrend went into a full court press that was impressive most of the time although there were lacking moments.

With the press in full gear, the Cubs forced Grove City into an embarrassing eight turnovers. Grove City's defense wasn't sleeping however, as the Cubs could not gain on the Grovers lead.

The last ten minutes of the game proved to be very fast and very physical. Numerous fouls were committed, one resulting in two technical fouls. When the dust cleared, Behrend was behind by the final score of 79-63.

Jeff Gillette was high for the Cubs with 15 points and Larry Szoszorek and Jack Nill had 10 points apiece. What hurt most of all though, Larry McAleer was shut out. Gillette played an excellent game all around and Nill had a fine second half following a somewhat poor first half.

The Cubs host California State tonight at 8 p.m. If Behrend can keep up their hot press, and add some better shooting, Cub fans will be in for some exciting as well as winning basketball.

INTRAMURAL STANDINGS AS OF JANUARY 24	
DORM LEAGUE	COMMUTERS LEAGUE
Brothers of the Brush	9-0
Super Jews Inc.	9-1 AM's
Big Bell & the Extinguishers	7-3 Upauasez
Midnight Ramblers	5-3 Thee Fakulty
Tastee-Firm	5-5 Jocks
Hole in the Wall Gang	4-6 Degraders
Pacers	3-6 City Slickers
Something Different	1-7 Bouncers
TRC	1-8 Maaraders
Steelers	1-10 Basketball Jones Inc.

Use U-Haul Boxes

Dorm rooms are often rather bleak: bare walls, simple furnishings, limited closet and storage space. Cardboard wardrobe and utility cartons, like those available from U-Haul dealers, can fulfill a dual role by providing extra storage space and serving as attractive decorator accessories.

The wardrobe cartons are about 45 inches high and two feet square. They live up to their name of "extra closet." They have a metal bar inside for hanging clothes and a fold-down flap for easy access. It is a good place to store out of season or special event clothes, that won't fit into the packed closet, and it costs only \$3 to \$4.

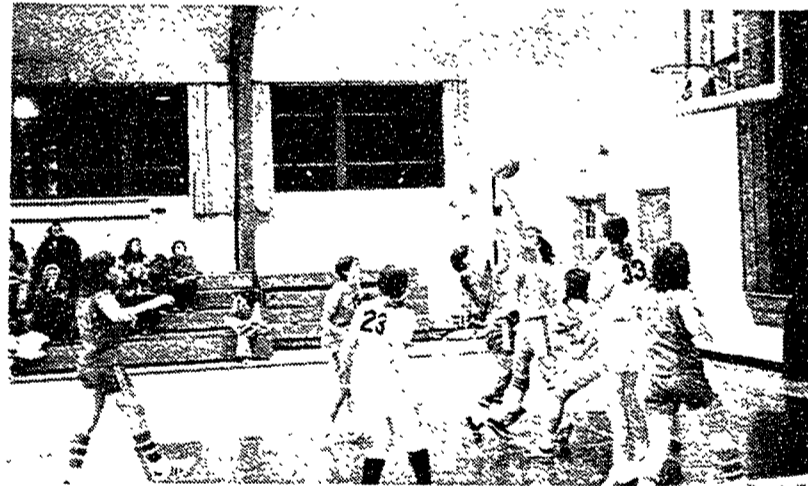
The utility cartons are an 18-inch cube and can be used for

storing extra clothes, bedding, or things you don't want the dorm mother to find. They can be used as bedside stands or several can be arranged to make a bookcase or display shelf. They cost less than \$1.

Although the cartons may have a snappy design printed on them, you may want to decorate them to reflect your own tastes. You can cover them with contact paper, fabric or paint. You might paste some of your favorite posters on the cartons and turn them into giant picture cubes.

You can keep using the cartons even after the school year is over. Just pack the rest of your things in them and take off for home or summer job.

The wardrobe and utility cartons are available from many of the U-Haul dealers across the nation. They also have tape for assembling the collapsible cartons.



Jane Truskey and Gail Brown (11) are helping Behrend pull out another win in girls basketball. The team is coached by Melodye Laudensack.

PSU Enrollment Varied Some Foreign Students

Pennsylvania State University students come from every county in the state, and they also come from every state, and from many other countries.

The annual survey of enrollment reveals that during the current academic year, 51,449 of the 55,089 students registered are from Pennsylvania; 2,786 are from other states and the District of Columbia; and 854, the majority of them graduate students, come from other countries.

Among the out-of-state students, there are 794 from New York and 703 from New Jersey. Maryland has 183, Virginia 158, Ohio 130 and Massachusetts 116.

Allegheny County with 5,279 students, more than 10 per cent of the Pennsylvania total, tops the list of Pennsylvania counties, followed by Centre with 3,977; Philadelphia with 3,418; Montgomery with 2,420; and Delaware County 2,101.

Others among the 16 counties with enrollments exceeding 1,000 are: Westmoreland 1,604; Erie 1,597; Blair 1,539; Luzerne 1,425; Bucks 1,395; Beaver 1,258; Fayette 1,174; Dauphin 1,156; Schuylkill 1,151; Lackawanna 1,139; and Berks 1,112.

Included in the total enrollment are 6,658 Continuing Education students for whom county designation is not available.

BEHREND COLLEGE WOMEN'S BASKETBALL SCHEDULE 1973-74	
Wednesday, February 6	Allegheny A 7 p.m.
Thursday, February 7	Mercyhurst A 7 p.m.
Thursday, February 14	Villa Maria H 7 p.m.
Saturday, February 16	Thiel H 7 p.m.
Monday, February 18	Villa Maria A 7 p.m.
Thursday, February 21	Edinboro H 6 p.m.
Saturday, February 23	Commonwealth Tournament New Kensington

Applications for Male Resident Assistant at Student Affairs Office
Deadline Feb. 4, 1974

Kelley's Korner Market
 Frozen Pizza
 Fresh Lunch Meats
 Soft Beverages Ice
 Ice Cream Drugs
Open 9 a.m. to 10 p.m.
7 Days A Week
Station & Nagle Rd.

Tickets at RUB Office

Will, the word's out. Seals and Crofts are coming to Erie. Not much can be said that hasn't already been said on the radio stations. But for those of you that may not listen to the radio very often, here's the story.

Seals and Crofts will be appearing at the Erie County Field House on February 14. Tickets are \$5.00 in advance and \$6.00 at the door. Tickets can be obtained at the RUB desk, at all Record Bars, all Ed Parks, My Hip Pocket, Beginnings, Gross Stereo and Tapes, all Snooty Fox, the Music Box in Jamestown, and the Chess King, in the Chautauqua Mall.