

Behrend Collegian

Published by the Students of the Behrend Campus
of the
Pennsylvania State University

Volume XXIII No. 11

Station Road, Erie, Pa. 16510

Thursday, January 20, 1972

Kochel Announces Plans For 6-Man Task Force To Formulate Behrend's Academic Future

by Doug Leichter
Managing Editor

President Oswald.

Irvin H. Kochel, Director of the Behrend Campus, announced the formation of an academic planning task force for the Behrend Campus before the Faculty Senate at its meeting January 13.

Kochel read part of a letter from John W. Oswald, President of the Pennsylvania State University in which Oswald said, "I concur in your appraisal of the need to strengthen academic planning at the Behrend Campus and to buttress the campus for its changing role. . . such a transition, however, will not be easily made nor can it be accomplished without sound academic planning and a realistic reassessment of programs and priorities."

Oswald's letter then proceeded to explain that he had appointed Dr. Stanley Ikenberry, Senior Vice President for University Development and Relations, to work in conjunction with Kochel in forming a task force to develop, ". . . an imaginative but realistic academic plan."

The task force is to be composed of six members; three from the Behrend Campus, and three from University Park. Kochel will work closely with the task force and act as its executive officer. Dr. Ikenberry will serve as a "liason" with the office of the president.

The intended goals of the task force include:

1. Re-examine present programs now offered and suggest future priorities.
2. Project enrollment patterns, faculty and staff requirements through 1980.
3. Develop contingency plans that will permit the University to move towards its goals at Behrend although physical development and resources may not be immediate.
4. Assess the adequacy of the organizational structure at Behrend.
5. Insure that the plans for physical facilities are in accord with academic development plans.
6. Exploit the potential for uniqueness at the Behrend Campus.
7. Insure the congruence of the Behrend academic plan with the total Penn State system and the Pennsylvania Master Plan.
8. Develop to the maximum the supportive relationship between the Behrend Campus, the other commonwealth campuses, and the University Park Campus.

Kochel said that in order to maintain proper balance among the members of the Behrend contingent he would ask for a faculty member from the sciences and one from the non-sciences. He then asked that the Faculty Senate give him a name of a faculty member by January 27. This member may be either elected or appointed. Kochel then said that he would appoint a member from the opposite teaching field. Kochel finished by saying that hopefully the task force will begin to work in early February, with the possibility of a report by May. The three representatives from University Park will be named by Dr. Ikenberry after the Behrend members have been chosen. All names will then be submitted to

Dr. Richard Tomsic, Assistant Professor of Psychology, noted that the Faculty has been working on the problem of academic planning and queried about the time permitted the task force as being too short, especially considering the amount of work to be done.

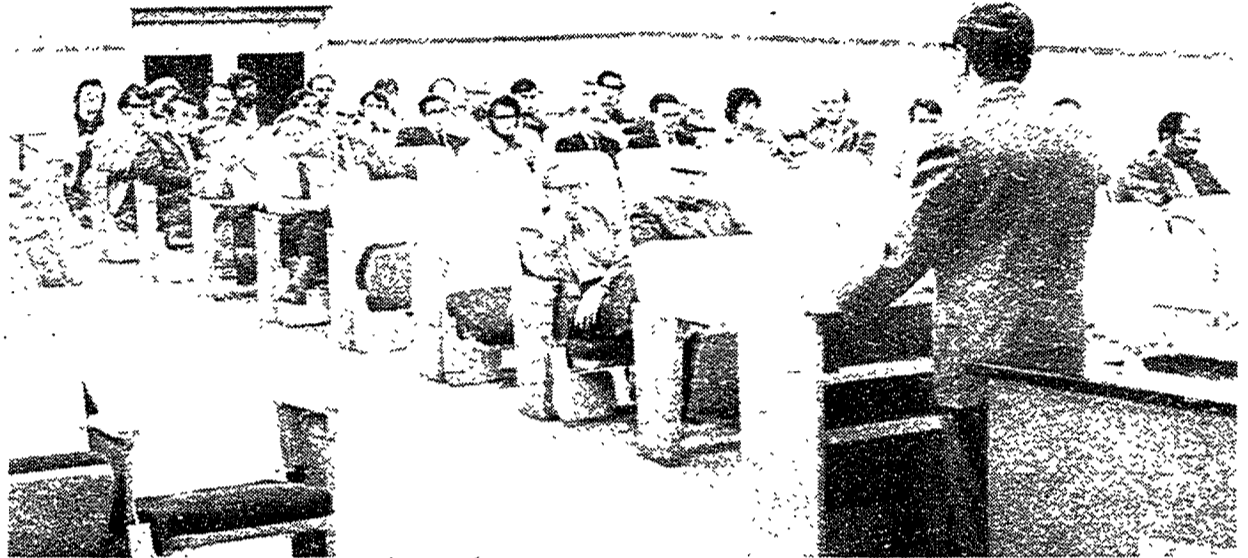
Kochel replied that the May date was his own, but said that it is hoped that the report will be done by May. He referred to the data already collected by Dr. Ward Knockemus, Assistant Professor of Chemistry, at University Park during the past summer. Kochel said that he felt that enough data is readily available at Behrend and at University Park; further data collecting will only delay implementation of any plan. Kochel noted, "as far as I am concerned we have delayed two years already."

Kochel also noted that student input will be required and in all probability sought by the task force.

Dr. David P. Spalding, Assistant Dean of Graduate School, agreed with Tomsic, but went on to add the need for continuous planning as "an ongoing function."

Tomsic noted that speed is necessary. It was decided that nominations would be used for the faculty elected representatives, with ballots going out to the faculty by Monday or Tuesday and voting taking place on Wednesday of this week. Tomsic noted, "I think it would be better if the faculty as a whole decides."

At the moment, nominations for the task force are Louis Balmer, Associate Professor of Chemistry; Michael Chiteman, Instructor in English; James Chmiel, Assistant Professor of Chemistry; John Hendrich, Assistant Professor of Engineering; Philip Iobst, Instructor in Philosophy; Dr. Edward Masteller, Assistant Professor of Biology; Dr. Richard Mester, Instructor in Philosophy; and Norman Patterson, Associate Instructor of Education.



Task Force Planned

Irvin H. Kochel, Director of Behrend Campus explains the formation of the new academic planning task force. The task force which will begin work sometime in early February will have the job of devising a workable academic plan for the future of the Behrend Campus. It will contain six members, three of which will be from the campus with the remaining three members being appointed from University Park.

Expansion Plans Temporarily Halted

University Park (APS) - At the present time, expansion plans and plans to advance more Commonwealth Campuses to four-year status are at a "temporary standstill", according to Kenneth L. Holderman, vice-president for Commonwealth Campuses.

University President John W. Oswald recently appointed an Academic Planning Commission to comprehensively study the University and offer suggestions as a long range academic plan.

Oswald charged the committee with finding how the University should be configured—as he calls it, the "emerging role of the University."

Holderman said that until the committee presents Oswald with their plan and it is approved by the University's Board of

Trustees, the administration is not making any "formal" plans.

"Right now," said Holderman, "the Behrend Campus at Erie is the only Commonwealth Campus offering four years in Science and Arts and Sciences." The first class will graduate next June at Behrend.

The University now is required to submit to the State operational and capital budgets each year which cover five-year spans.

"Included in the last capital request budget are a number of projects not yet approved," Holderman also said that under the Capital Funds Bill, the State Legislature approves a certain amount of money for construction projects.

The General State Authority (GSA) then designs, constructs

and finances the buildings, utilizing state funds. GSA borrows the funds and the State Legislature repays the money.

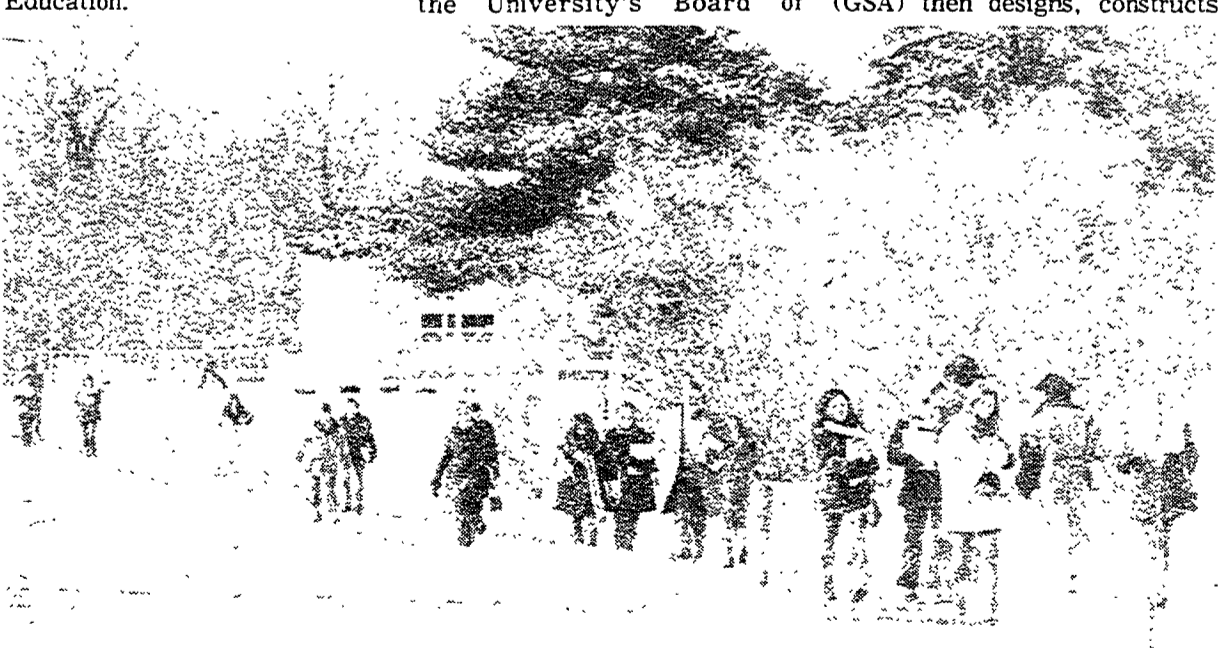
The University, said Holderman, places "the highest priority on academic buildings." Classroom buildings provide the foundation for the Campuses with labs, faculty and administration offices, a library and classrooms. "It's sort of the bread and butter part of the operation."

Beyond that, a physical education facility and a student center are planned.

Dormitories are "a different matter," which Holderman said are classified "self-amortizing". Dormitories are a necessity at a four-year campus such as Behrend and seven Campuses—Altoona, Beaver, Behrend, Hazleton, McKeesport, Mont Alto and Schuylkill—presently have residence halls.

According to Holderman, plans have progressed well for implementing the Commonwealth Campuses system. "This commitment of local communities to their campuses has played and still is playing a vital role in the development of the system."

He defined the role of the University as a "catalyst" to put together funds for construction at the local Campuses. Funds in different proportions from private-givers, local donations, state appropriations and federal aid are "pooled" by the University and channeled into the local Campuses.



It's Only The Beginning

The hopes of many that Old Man Winter had forgotten Behrend proved for nought as approximately 10-12 inches of the fluffy stuff was deposited on the campus last weekend. Skiers joyfully took to the slopes while others ruefully added more antifreeze to their cars and yet others grimly munched to classes through the mush and sub-zero temperatures.

**Cubs
Take
Two**

See Page 5