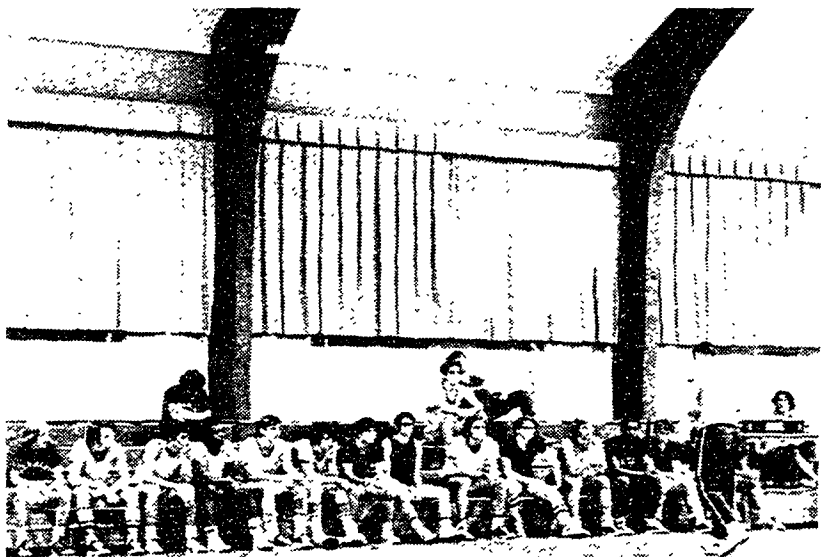


Behrend Hoopsters Split Opening Games: Make Home Debut This Saturday At 8:00 P.M.

by Tom Harvey
Sports Reporter

The Behrend Campus hoopsters defeated Ashtabula-Kent 73-67 in their opening fray on Wednesday at Ashtabula and then dropped an 88-54 decision to tall and talented Lakeland Community College on the Lakers' boards. The Ashtabula contest was highlighted by the superb all around play of co-captain Glenn McKinney. McKinney pumped through 12 field goals and 8 charity tosses for a total of 32 points. Also scoring in double figures for the Cubs were Chris Gross (12) and Steve Johnson (10). The box score, however, does not give enough credit to John Miller who came off the bench in both halves. Coach Sweeting commented: "Miller was a pleasant surprise. He came off the bench and saved the game for us after Deiner fouled out"



Coach Sweeting Discusses Game Plan

Coach Roger Sweeting discusses the game plan for the upcoming home opener this Saturday at 8:00 p.m. at Erie Hall. Sweeting's cagers are hopeful of a victory against Allegheny C.C. in front of their home fans.

The Lakeland game was a case of the Lakers being too tall for Coach Sweeting's youthful charges. The Lakers fielded a starting lineup of players 6'8", 6'4", 6'4", and 6'3". Led by their big center Dave Caldwell, Lakeland pulled away from the Cubs at the 10 minutes mark of the first half after the Cubs had played scrappy basketball. The 6'8" Laker center was the dominant figure of the game as he tallied 22 points, hauled down a basketful of rebounds, and was an intimidating factor on defense. McKinney led the Cub effort with 15 points followed by Ron Gaines with 12 and Chris Gross with 11.

Coach Sweeting commented: "We are predominantly a freshmen team and these freshmen right now are too inconsistent. However, after a few more games I'm sure the boys will settle down and play the good basketball they are capable of."

The next few ballgames are important for Coach Sweeting as he preps the squad for the commonwealth campus games starting in January. Wednesday night the Cubs traveled to Jamestown to face Jamestown CC. On Saturday the Behrend five open their home portion of the schedule facing Allegheny CC-South with game time slated for 8:00 p.m.

by Dave Ruef
Sports Editor

The 1971-72 edition of the Behrend basketball team will make its home debut this Saturday night against Allegheny Comm. College at 8:00 p.m. At this time the Collegian would like to present a player profile of Coach Sweeting's entire squad.

MARSHALL BURNETT (Soph., 6'1", 170 lb.) Co-captain, but will not be eligible until January. Consistently scored in double figures last year, and is an improved shooter this year. Quickness and jumping ability make him a better than average defender and rebounder.

HAL BUTLER (Frosh., 6', 165) Pre-season injuries have slowed his progress, but is expected to see considerable action as a guard. Always a threat to score, especially off the drive. Has good basketball instincts, and moves well without the ball.

DENNIS DEINER (Soph., 6'2", 180) Appears to be the team's leading rebounder, and the likely starting pivot man. Fakes and passes well from the high post position. Limited high school experience, but still shows good poise and savvy, while doing his share of the scoring.

CALVIN FLEMING (Frosh., 6', 170) Quickest man on the squad, and potentially one of the best defenders. Can hit the outside jumper or the drive equally well, but needs to be more selective. May play at both forward and guard.

RONALD GAINES (Frosh., 6'2", 180) An All-County selection last year while averaging nearly 20 points per game for Union City. Fakes well and has fine moves inside. One of the team's stronger rebounders, and a leading candidate for a starting forward position.

DENNIS GRACE (Frosh., 5'8", 150) Joined the basketball team late, after enjoying a fine freshman season with the soccer team where he earned a starting berth by season's end. Very quick, and a good competitor. Shoots well but lack of size handicaps him defensively.

CHRISTIAN GROSS (Frosh., 6'2", 185) Honorable mention All-County player last year at Wattsburg, where he averaged in double figures as a scorer. Can score inside or outside, and is a heavy passer. Needs to become more aggressive defender, and has the ability to do so. Will probably be a regular forward.

STEVE JOHNSON (Frosh., 6'3", 185) His size alone makes him a leading candidate for a regular guard position, the position he played on a winning South Carolina high school team. One of the team's better long-range shooters, he also lends rebounding support from the guard position.

DAVID JONES (Frosh., 5'11", 175) Good medium range jump shot, and good knowledge of the game. Was a regular on his Pittsburgh-area high school team. Should provide valuable back-up support at a guard position.

THOMAS KOZESKY (Frosh., 6'3", 190) Seemed headed for a regular forward position before a fractured hand sidelined him temporarily. One of the leading

scorers and rebounders at Greater Latrobe High School last year. An aggressive and determined athlete.

GLENN MCKINNEY (Soph., 6'1", 170) Scored 351 points for Behrend last year. Will start at guard and quarterback and this year's squad as a sophomore co-captain. Has exceptional moves with either hand going to the basket and soft shooting touch. Also one of the team's best defenders.

WILLIAM MCKINNEY (Frosh., 5'11", 150) A guard who scored over 200 points for Union City High School last year. Needs to add variety to his offensive game, but is sound fundamentally and rapidly developing into a tough defender.

MARK GILLETE (Frosh., 5'10") Another soccer player who joined the squad late. Has a good high school background, having played at Linesville, but needs additional time to adjust to college ball.

JOHN MILLER (Frosh., 6'4", 170) Tallest man on the squad, and one of the best jumpers. Dribbles and shoots well, moves quickly for an inside man. Limited high school experience and lack of aggressiveness will be overcome in time.

RONALD MILLER (Frosh., 5'11", 150) Capacity to work and desire to learn exceed his experience at this time. Has the necessary quickness to develop into a fine player, and the attitude to make it possible. Good ball handler.

JOSEPH OLSZEWSKI (Frosh., 6'3", 185) Has the greatest untapped potential of any squad member. Good shooting touch inside and out. Decent rebounder who will improve rapidly with added experience. Positive attitude a big plus.

DUANE ZIMMERMAN (Frosh., 6', 175) One of the squad's best jump shooters, who needs to add versatility. Well drilled on fundamentals as are all of Carney Metzgar's East H.S. products. Can play forward or guard, will probably play both.

McKinney, Athlete of Week

by Tom Harvey
Sports Reporter

Glenn McKinney has been named "Athlete of The Week" for his outstanding efforts in last week's contests against Ashtabula-Kent and Lakeland Community. The former Union City flash nailed 19 of 50 shots from the floor and 9 of 14 from the charity stripe in last week's action. As playmaker and quarterback of the offense, Glenn has passed for seven assists and he has also garnered 11 stray shots.

According to Coach Sweeting, McKinney "not only scored but he also did all the things expected of the captain." Sweeting went on to comment: "With a predominantly freshman team, we look to Glenn for team leadership. He has certainly come through for us in the first two games."

Last season McKinney was the second leading scorer and also was honored with Behrend's white letter award in basketball. It is with performances such as last season's and in the early going this season that Coach Sweeting looks for from Glenn McKinney, "Athlete of The Week."

	FGM-FGA	FTM-FTA	RB	ASST.	TOTAL PTS.
Gross	4-11	4-5	7	4	12
Fleming	1-3	1-1	1	0	4
Gaines	2-11	0-2	9	0	4
Olszewski	0-3	1-2	3	0	1
Deiner	2-9	0-0	5	2	4
J. Miller	2-2	1-1	1	0	5
McKinney	12-34	8-10	9	4	32
Johnson	5-10	0-1	8	0	10
Butler	1-2	0-0	0	0	2
Zimmerman	0-0	0-0	0	0	0
TOTALS	29-85	15-22	43	15	73

	FG	FTM-FTA	TOTAL
Colson	4	4-4	12
Mason	3	8-12	14
Landphair	7	1-1	15
Roach	4	3-3	11
Wall	6	1-2	13
Humphrey	0	2-2	2
TOTAL		19-24	67

	FGM-FGA	FTM-FTA	RB	ASST.	T
Gross	5-7	1-1	2	0	11
Kozesky	0-6	1-2	0	0	1
Gaines	5-11	2-5	3	0	12
Olszewski	0-0	2-2	10	0	4
Deiner	2-7	0-0	2	0	2
J. Miller	0-1	1-2	2	0	2
G. McKinney	7-16	1-4	2	2	15
McIntosh	1-2	1-2	1	1	3
Johnson	0-1	1-1	3	2	1
Butler	1-1	0-0	0	0	2
B. McKinney	0-0	0-0	0	0	0
Zimmerman	0-0	1-2	0	0	1
TOTALS	21-52	12-21	26	7	54

	FG	FTM-FTA	T
Caldwell	10	2-5	22
Dorko	3	2-3	8
LaCava	8	4-8	20
Manross	6	0-0	12
Calvin	2	1-2	5
Tomblin	2	2-0	4
Booms	0	0-0	0
Defling	1	0-0	2
Blakely	3	1-2	7
Barwidi	0	0-0	0
Ferguson	0	0-0	0
Rich	0	0-0	0
TOTALS	38	12-22	88

A whole year of driving protection and service for your favorite motorists

GIVE AAA MEMBERSHIPS!

The personal gift that's easy to give—so nice to receive! AAA—the world's largest travel organization—provides everything from maps and tour guides to recommendations and reservations to insurance to emergency road service—and more! We'll gift-wrap and arrange delivery, if you wish. Call for details.

AAA

Erie County Motor Club
420 W 6th St.
Phone 454-0125

The Large Lion

Head Shop

Monday-Saturday
open noon-10 P.M.

Standard Items
Head Comics

C.J. DUSCKAS

FUNERAL HOME

2607 Buffalo Rd.

899-2812

"Serving Erie since 1946"

Big Selection

Knit Shirts, Boots
Sweaters, Flares,
P-Coats, Jackets,
Etc.

AMERICAN SURPLUS

501 State St. Open 9 to 9
Saturday till 6