

# Behrend Culture News

## Happenings around campus

• **Music At Noon:** The Logan Series is entering its 21st season this year. Helping to kick-off the semester is the Fireworks Ensemble, which will perform on Sept. 22 in McGarvey Commons. The group, which consists of eight musicians, has been hailed by several publications, including the *New York Times* and the *Washington Post*. Their music may not sound like that of traditional classical music, but really they give audiences a wider scope of what classical music can sound like if you step outside the box.

• Also performing in September is the Grammy-nominated Cedric Watson & Bijou Creole, the first act in Behrend's Rhythms of Life Series this year. On the 28th, Watson and his band will entertain inside Bruno's Café, giving audiences a taste of Cajun and Creole music. Watson has traveled all around the world playing in Spain, Haiti, Nova Scotia and France, which is only natural since all of his singing is in French. Hoping to spread interest in Louisiana Creole music, this group will introduce a musical world that most listeners have never heard before.

• **While Behrend is gearing up for these musical performances, the Creative Writer's Speaker Series is preparing for two events in the Smith Chapel, one on Sept. 16 and the other on Sept. 30.**

• Award winning Fiction writer Michael Byers is the first of three speakers scheduled for this semester and the first for September. Author to three rave reviewed books, his latest, *Percival's Planet*, is set in the late 1920s and surrounds a young boy who is pulled into the search for Perival Lowell's Planet X and ultimately is the one to discover what is now known as Pluto. As put by the *Washington Post*, this story is "A subtle, satisfying adventure...Byers writes with a sweet mixture of humor and sympathy about lunacy and manhood during a period of extraordinary disruption." Besides his novels, Byers has written many essays and short stories, and his work has appeared in the *Wall Street Journal* and the *Washington Post*.

• The second speaker, Nin Andrews, has also won multiple awards, but in this case for her poetry. Already the author of several books, her latest collection of poems, *Southern Comfort*, focuses on family and touches upon the joys of youth. Ken Tucker from *Entertainment Weekly* dubs Andrews the "Wonder Woman of poetry." So what must he think of *Southern Comfort*?

"[It] is a superb volume for both dedicated readers of poetry and anyone looking for an apparent autobiography in poetic form." *Publishers Weekly* agrees, saying that "Andrews's...art lies in her ability to transport readers to a place where it's possible to savor the waning of childhood innocence."

• **Kicking off this year's Speakers Series, former Steelers coach Bill Cowher will come to Behrend on September 23. His presentation will take place in Junker Center and start at 7:30 p.m. This event is free and open to all, but seating will be offered on a first-come basis. Past speakers have included former Steelers player Jerome Bettis, NPR's Michele Norris, and Fox Business News anchor Stuart Varney.**

• **The Lion Entertainment Board puts together many events for students during the year, including concerts, comedians and movies.**

To finish off this month, comedian Dan Cummins will perform on Saturday, August 28. The following two Fridays also have performances by Ernie Halter on September 3 and Nathan Angelo and Shwa Losben on September 10. At the end of next month on the 24th, stand-up comedian KT Tatara will bring his "brutally honest but always funny" comedic entertainment to Behrend.



Photo by: Robin Holland, courtesy of fireworksensemble.org

*Fireworks Ensemble is a group comprised of eight classical musicians who pride themselves on being able to play just about anything, regardless of style, time period, or instrumentation.*

## EDITOR RECOMMENDATIONS

Shannon Ehrin, culture editor

If you can get your hands on it, *Linda Goodman's Sun Signs* by Linda Goodman (first printed in 1968) is an interesting look into astrology. Goodman writes in-depth descriptions of each sun sign and how to recognize them, according to gender, age and even a section for the "employee." I found her analysis of my sign, Capricorn, to be quite accurate, but not entirely true, especially the part about me hitting my hypothetical future children with a shoe. Now, I don't know about Ms. Goodman's relationship with her shoes, but why would I ever want to inflict harm on footwear? Unless of course said footwear is jelly shoes. I'm obviously kidding (maybe), but I found some of what she wrote to be comical and to not be taken too seriously. After all, her book is filled with quotes from Alice In Wonderland. Although, the quotes are specific

enough that you may start to wonder why she placed certain quotes with each sign. No matter how humorous the book may be, it is insightful and worth reading.

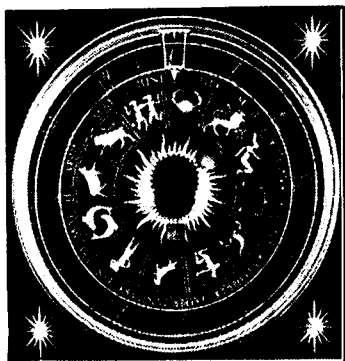


Photo courtesy of Flickr Creative Commons: Remko van Dokkum

# Erie Culture in brief

In July, the Erie Art Museum opened four exhibits, one of which is a design competition and the others are collections from various artists of different outlooks, all represented in their creations.

Works depicting natural landscapes and idyllic designs can be seen in *Peaceful but Not Always: Paintings by Neil Daugherty*. This exhibit features works by painter and Erie native, Neil Daugherty. While a lot of his work is in private collections, the Erie Art Museum has been able to gather many of them to go along with the 20 already owned by the museum.

With the help from the Estate of Richard Lubinsky and Fountain Gallery, *Eleven Fingers: Works by Dick Lubinsky*, a showcase of some of Lubinsky's nearly 2000 paintings will commemorate Lubinsky's accomplishments of translating what he saw in the world into paintings. Though he suffered from schizophrenia for most of his life, Lubinsky used art as a means of escapism and "as a means of engaging an often unfriendly world." Only until after his death in 2001, did anyone really know of the magnitude of his artwork.

The InnovationErie: Design Competition gives artists a chance to display their new designs. As long as the artists adhere to a few guidelines, they have the opportunity to possibly win \$10,000, as well as professional advice regarding aspects dealing with their work. Visitors to the museum are able to vote on each invention until the exhibit closes. There are now four finalists, their inventions being a Built-In Bottle Opener, a Social Bike System (SoBi), the Pedi-Pro and the EcoClip. Detailed descriptions of each invention can be found at [www.innovationerie.net](http://www.innovationerie.net).

Clearly an experimentalist, local artist and Assistant Professor of Painting at Slippery Rock University, Heather Hertel has tested movement's ability to create art in the exhibition, *Fluidity: Painting by Heather Hertel*. Abstract the paintings may be, but there is something organic about the looks of her pieces and you can almost envision the process of painting each brushstroke, while regarding the question of its placement on the canvas. Hertel is most influenced by Japanese art, particularly that of Butoh, as well as the 20th century painter Vassily Kandinsky, and by using movement to bring her vision to reality, she "seeks to navigate the bridge between premeditation and improvisation."



[www.erieartmuseum.org](http://www.erieartmuseum.org)

The Erie Art Museum continues with the Neil Daugherty, Dick Lubinsky and InnovationErie: Design Competition exhibits in the Main Galleries until October 31. The Heather Hertel exhibit in the Frame Shop Gallery runs until October 9.

On August 27 from 7:00-10:00 p.m., the museum will hold a Gallery Night. Twelve galleries will open their doors, including the Erie Art Museum, to give the public the chance to experience different variations of artwork. Among the artwork is mosaics by Amy Hahn, portraits by Mike Deibel and new works by multiple other artists. Live music will be featured at many of the venues, as well as demonstrations and henna tattooing. This event is free and open to the public. Transportation is also free along the gallery route. Trolley route and Gallery Night printouts are available on the Erie Art Museum website.

For more information on museum exhibits, admission costs, museum hours and parking, please visit [www.erieartmuseum.org](http://www.erieartmuseum.org). Admission on Wednesdays is free to all.



Flickr Creative Commons: Gunjan Karun

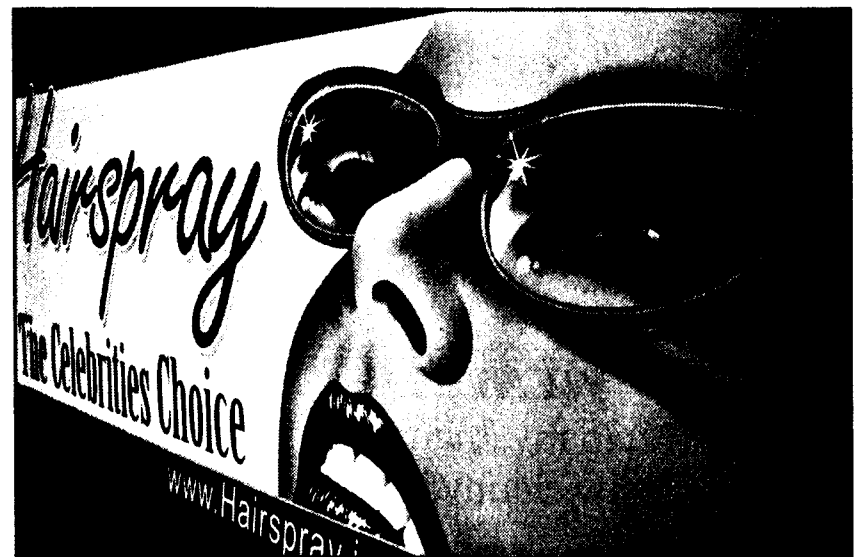
The Presque Isle Gallery Coffeehouse, located on Peninsula Drive, regularly features local artists.

• This Sunday, singer/songwriter Tom Hitt will perform from 1:30-3:30 p.m.

• The following Sunday, August 29, Folk singer Tommy Link will perform from 3:00-5:00 p.m.

The Erie Playhouse will put on its production of *Hairspray* on September 9 at 7:30 p.m. at the Erie Playhouse on West 10th St. The play takes place in 1962 and centers around Tracy Turnblad, a teenage girl who wants to dance on "The Corny Collins Show." After getting on the show, Tracy becomes an instant celebrity, while still maintaining her sky-high hair.

Tickets for the show are now on sale.



Flickr Creative Commons U-g-g-B-o-y-(Photograph-World-Sense)

September is a month full of premieres, including the start of Erie Philharmonic's 2010/2011 season. Saturday, September 25 marks the opening night and concert *Bernstein and Bolero!* pieces by Ravel, Bernstein and Prokofiev.

Tickets for students 25 and under are only \$5. Tickets can be purchased online or at the box office at 609 Walnut Street, Monday through Friday from 9 a.m. until 5 p.m.