

## LOCAL NEWS

### ERIE

The trial involving the family of 18-year-old Dominica Juliano and Country Fair Inc. began on Thursday.

In 2004, then 12-year-old Dominica entered the Country Fair store at West 18th and Sasfras St. to buy some snacks with her grandmother, where an employee flashed his hand-operated bar code scanner lightly over Dominica's face and told her to smile.

The next day, burns appeared on Dominica's face, which her family claims were a result of the clerk's actions, which not only caused burns, but also severe psychological problems that followed after the incident.

The Country Fair company claims that the child showed no signs of distress during the incident, and that there is no scientific evidence that the scanner used can cause the kind of damage claimed by the Juliano's.

### ERIE

Three Erie residents were charged with attempting to extort \$1,000 from an Erie couple on Tuesday.

Tayron Cargile and Devon Henderson were accused of trying to force a woman to withdraw money from her bank account at Erie Federal Credit Union on Monday.

The two suspects transported the woman to the bank while her husband was held against his will by a third suspect with an ice pick.

The woman alerted a teller that the two suspects were waiting outside in a car, and asked that the teller call police.

After the call was made, police responded and took the two suspects into custody, and later the third suspect.

The three defendants are charged with false imprisonment, extortion and conspiracy to commit theft by extortion.

### LINESVILLE

State police have no new information to release on their investigation about a Linesville couple found murdered inside their home last weekend.

Laurie and Tod Prenatt were found dead in their home over the weekend, which the Crawford county coroner ruled as a homicide due to multiple gunshot wounds on the victims. Investigators are still probing other Linesville-area crimes to see if they are any way connected.

Among those crimes being investigated include a robbery at a Rite Aid store in Linesville on April 2. They are also investigating the abduction of an Erie man who was assaulted and taken against his will in Erie.

## 1. China prepares rescue for earthquake victims

JIEGU, China -- China started to airlift hundreds of injured people to hospitals on Thursday, a day after an earthquake struck the Qinghai province.

The 6.9 magnitude earthquake caused buildings, bridges, and roads to collapse, leaving 11,000 injured and over 750 dead.

Rescuers have pulled out over 1,000 people buried under

the rubble and are still searching for 234 people who are still missing.

The Chinese government has sent thousands of tents and winter quilts to victims, along with \$29 million for aid.

## 2. Adoptions from Russia suspended

MOSCOW -- The government of Russia halted the adoption of children by American families on Thursday. The Russian government stated that until ground rules pertaining to adoption are laid out, all adop-

tions by American citizens will be temporarily suspended.

The U.S. ambassador to Russia, John Beyrle, informed American families that were in the process of adoption "Not to worry. We're working on this and we really don't think that this will have any long-term effect on the ability of American families to adopt here."

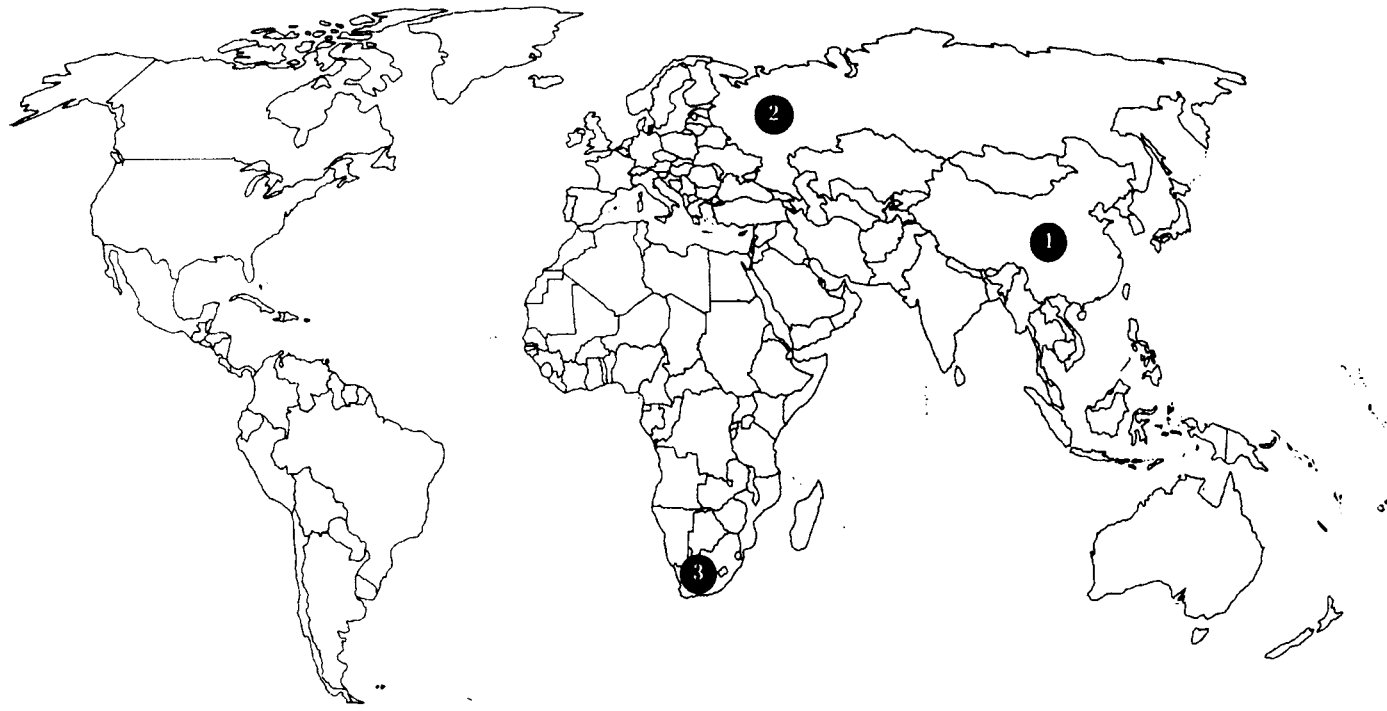
This action comes after a American woman "sent back" a adopted Russian child last Wednesday, after the woman reported psychotic behavior from the child.

## 3. Man dies while waiting in line for tickets

JOHANNESBURG, South Africa -- 64-year-old Ralph von Heerden died while waiting in line for World Cup tickets on Thursday. Heerden was pronounced dead by paramedics, and it was ruled that Heerden's death was a result of heart problems after waiting in line for over five hours.

The long waits in line for South Africans stemmed from ticket system breakdowns.

## World News



## ECONOMY

# Planes grounded due to volcano

ERIC PEIRCE  
asst. news editor

What event could stop all flights from Western Europe and those from the United States to Europe?

One answer: Volcano. Since March 20, eruptions started to occur in Iceland's Eyjafjallajokull glacier, but the most recent eruption on April 14 blew a hole in the mass of ice, sending volcanic ash thousands of feet into the air.

While an evacuation was placed for 800 people around the glacier due to fears of flash flooding, over 6,000 flights were canceled over eastern Europe, including the U.K., Ireland, Sweden, Norway, Belgium, Denmark, France, and the Netherlands.

In the United States, over 32 continental flights were canceled to Europe, refunds included. The main reason for the major shutdown was due to the volcanic ash, which could clog the engines of airplanes, causing disastrous results.

Manchester Airport spokesman Russell Craig explained the dangers of volcanic ash. "If the air in the engine were mixed with ash, it could cause engine failure and electrical difficulties with an aircraft," he stated.

"It's happened before, and the aircraft didn't come out the other end in one piece."

American Airlines also canceled flights coming from airports from London, Paris, Zurich, Brussels, Manchester, and Dublin.



Volcanic ash caused air travel to shut down in and out of Iceland.

American Airlines did manage to operate 15 flights both in and out of the U.K. on Thursday before the airport was closed down.

Officials do not have clear idea of when flights will resume. According to Matt Watson, a geophysicist, two things needed to

happen before flights were to resume.

"You need the volcano to stop replacing ash to the altitude that commercial aircraft fly at 30,000 to 35,000 ft., and you then need the upper-level winds to blow ash and disperse it out of the air space."

## NATIONAL POLITICS

# Polish President and government staff perish in plane crash

MARCUS YEAGLEY  
head copy editor

Polish President Lech Kaczynski and nearly 100 government officials died in a plane crash in western Russia on Saturday.

Fifteen MPs, along with the heads of Poland's armed forces, the central bank governor, and several deputy ministers were killed.

The delegation was heading to the Russian city of Smolensk to commemorate the 70th anniversary of the Katyn massacre where Russian forces killed over 20,000 Polish prisoners of war.

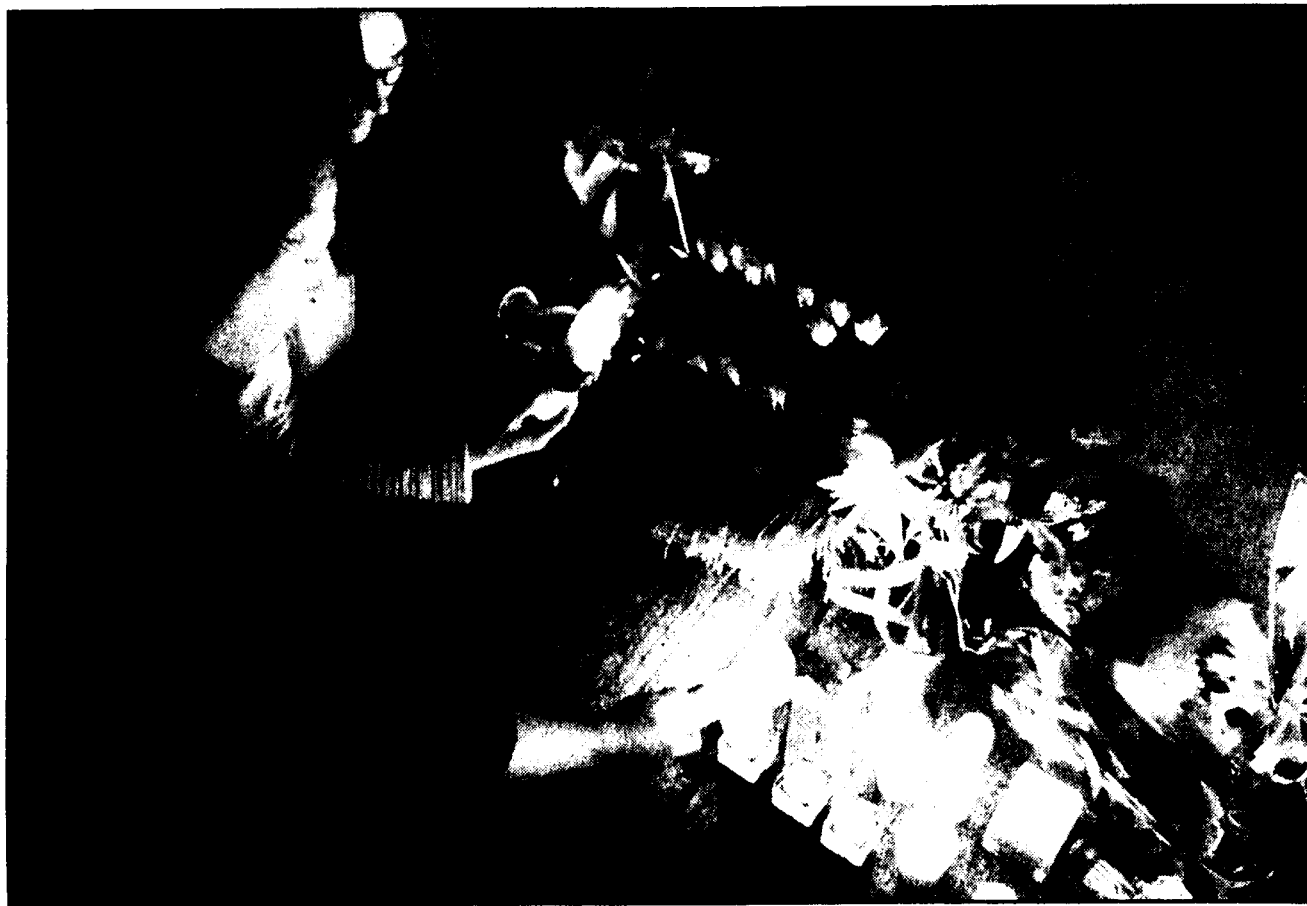
Donald Tusk, the Polish prime minister, called the crash the "most tragic event in Poland's postwar history."

The president's Tupolev Tu-154 jet went down in heavy fog and crashed in a forest, the Russian emergency ministry said, according to Al Jazeera.

Russian investigators, working with their Polish counterparts, said that the pilots had not heeded repeated warnings from Russian air traffic controllers.

"The crew was aware of the inevitability of the coming catastrophe, if only due to the plane shaking after the wings hit the trees," said Andrzej Seremet, the Polish chief prosecutor.

Russia's chief investigator, Alexander Bastrykin, said that the flight



Polish citizens mourn the loss of the Polish President and numerous government officials.

recorders revealed there were "no problems with the plane."

Since the crash, thousands of Poles have gathered at the presidential

palace in Warsaw, including Vladimir Putin, the Russian prime minister.

## BEACON ONLINE

The Beacon website, the-behrendbeacon.com, is your online source for campus news.

Constantly updated with new and breaking news stories, the website will feature immediate coverage of events as well as an archive of past articles in the Beacon.

We also offer a Twitter account, @behrendbeacon, which will be used to let students know of breaking news happening at the college: notification of important events about to begin, police reports at the campus, or developments not yet released to students by the college.

The site also offers an RSS feed, links to Erie resources, and Behrend students' blogs.

## QUOTE OF THE WEEK

"A girl phoned me the other day and said... Come on over, there's nobody home. I went over. Nobody was home."

- Rodney Dangerfield

## FACT OF THE WEEK

The first cellular phone measured 9" x 5" and weighed 2.5 lbs.

www.mentalfloss.com

## CONTACT US

Our offices are located in the bottom floor of the Reed building, office 10H, down the hall from the mailroom.

TEL: (814) 899-6488  
FAX: (814) 899-6019  
The Behrend Beacon  
4701 College Drive  
Erie, PA 16563  
Room 10H

If you have a news story for the Beacon or want to submit feedback, e-mail us:

editor: editor@psu.edu

news: rlt5065@psu.edu

opinion: opinion@psu.edu

sports: sports@psu.edu

culture: culture@psu.edu

website: editor@psu.edu

photos: photoeditor@psu.edu

advertising and business: behrendbeaconads@gmail.com