

STUDENT LIFE

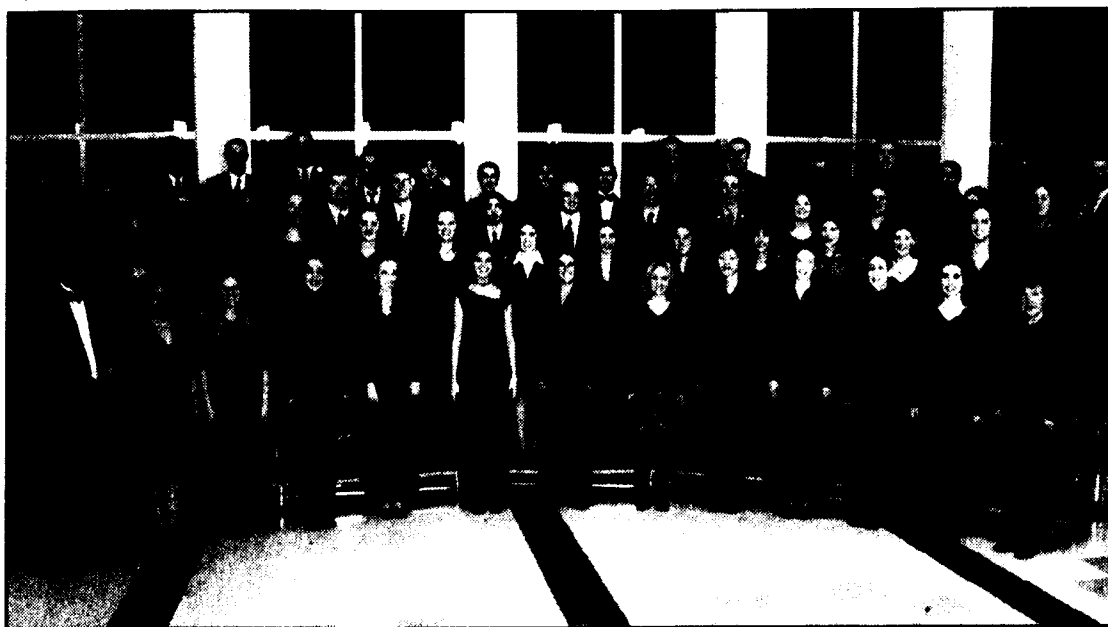
Upcoming events on campus and in the Erie area

- The 59th annual **Hanging of the Greens Candlelight Service** will be held at the Wintergreen Gorge Cemetery on Friday, Dec. 7 at 6 p.m. Transportation will be provided and those who need it should meet at the RUB Information Desk at 5:30 p.m.
- Comedian **Jim Gaffigan** will be performing live at the Junker Center on Friday, Dec. 7. Tickets cost \$20 for Behrend students and \$30 for the general public. They are available at the information desk in the Reed Union Building or online at <https://estore.psu.edu/home.asp>.
- The Behrend Math Club will be holding a **faculty vs. student bowling night** on Monday, Dec. 10 at 9 p.m. The event will be held at Eastway Lanes on Buffalo Rd. The first 20 students to sign up at the Reed Union Building Information desk get to bowl their first three games for free. Free pizza will be supplied.
- To help students prepare for finals, the Behrend Personal Counseling office will be supplying **free chair massages** outside of Bruno's Cafe at lunchtime on Thursday, Dec. 13.
- A **Ski/Snowboard Club trip** has been scheduled with University Park to Quebec City, Canada on January 6-11. Students can ski and/or snowboard Stoneham and Mont-Sainte-Anne mountains with four day interchangeable all-area lift passes. Lodging will be at the Hilton Hotel in Quebec City for five nights. The cost of the trip should be around \$500. If you are interested, visit the Reed Union Building Information desk or contact Walter Taylor at wmt115@psu.edu for more information.

- The **Behrend Psychology Club** is searching for new members. If you're interested, they hold meetings every Wednesday at 5:15 p.m. at the Psychology Lab in Lawrence Hall.

If you're a member of an organization or know of an upcoming event that you would like placed in this section, send an e-mail detailing the time, place, purpose and any other important aspect of the event to srm5082@psu.edu

Behrend Choir fuels Christmas Spirit vocally



CONTRIBUTED PHOTO

The Penn State Behrend Choir performed their holiday concert last week.

By Kayla Wright
staff writer
kmw5205@psu.edu

From classic Vivaldi and Handel to contemporary Christmas carols, the Behrend choirs sang it all at their "Sing Noel" concert during their hour long performance on Friday, Nov. 30. The concert was held at the Smith Chapel at 8 p.m. and featured Behrend's chamber and concert choirs along with a duet from guest soloists directed by Dr. D. Jason Bishop.

Tickets were free for Behrend students while staff and faculty had to pay three dollars and the general public had to pay five dollars. The performance was a success but the setting was problematic due to a lack of seating in the chapel.

The diversity of the music performed during the show added entertainment. They sang some less renowned songs along with a few classics. These included arrangements of "African Noel," "For Unto Us a Child Is Born," "Betelehemu," "Hiney mah tov," "Hallelujah," the twelve movements of Vivaldi's Gloria, and an encore performance of "It's the Most Wonderful Time of the Year."

They sang the 12 movements of Gloria in Latin. Learning unfamiliar music, being on pitch and staying in tune are difficult to begin with but when it has to be done all in another language you're bound to make some mistakes. Still their performance was very satisfactory: the pronunciation of words seemed correct and there were no noticeable mistakes. It was a very impressive choral performance.

The accompaniment was not the standard recording used during most choral performances. The choirs were accompanied by a guest miniature orchestra which included violins, oboes and cellos. This had a remarkable impact on the music; it brought it more to life. Performing live with an orchestra can cause some problems with timing and staying on beat. This was not the case during this concert. They had had a two and a half hour long rehearsal the night before to ensure accuracy and the results were noticeable. There was not one time at which the choir and the orchestra seemed at odds with one another; they seemed to work together harmoniously and completely in sync.

The music and the orchestra put on a great show. The only complaint from attendees had to do with a lack of seating. A lot of people present were forced to stand throughout the entire performance, with some people standing even outside of the door. One student commented that, "the music was great but I was unable to see the choir so it was kind of frustrating. The fact that I had to stand in the back, almost out the door for an hour didn't help the situation one bit."

This concert was a great opportunity for the choirs to show what they were capable of. They put on a truly amazing show. The Christmas music was a great way to bring in the holiday season and put the audience in the Christmas spirit.

Your Choice

Due to the graduation of Co-Editor-in-Chief Mike Sharkey, *the Beacon* is at a loss of what to do with the Humor page. We've decided to give our readers the chance to decide what they want us to print in the available space. Suggestions are welcome. Send your votes or page ideas to srm5082@psu.edu. Votes must be in by Dec. 21.

Humor page: A continuation of the humor page.

Puzzle page: A page full of puzzles for Beacon readers to solve (crosswords, word searches, sudoku etc.). This page could also include an advice column.

New Journalism/Gonzo page: A page where Beacon editors, staff and contributing writers cover events that they include themselves in. A storytelling approach to stories that diverts from traditional objective journalism.

Local Food and Drink page: An evaluation of area restaurants and bars, with food and/or drink recipes of the week.

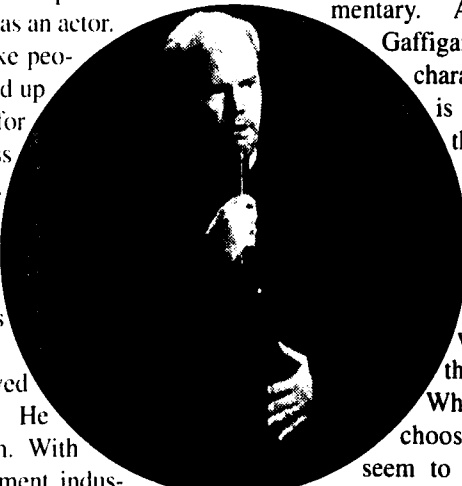
Behrend awaits Jim Gaffigan performance

By Carly Smith
staff writer
cas5422@psu.edu

For a man who has spent a good amount of his career in the spotlight on big stages, television shows, commercials and even in some movie productions, Behrend might not seem like an obvious performance site. But to the people eagerly awaiting the comical performance scheduled for Friday Dec. 7 on the Behrend campus there could be no better place for Jim Gaffigan to perform.

Gaffigan is a comedian as well as an actor. It was his life long dream to make people laugh through acting and stand up comedy. This was not the norm for his family. They believed success came from obtaining a steady job. A nice suit and tie symbolized the success his family desired. The thought of pursuing a career in the entertainment industry was insane.

At the age of 24, Gaffigan moved from Indiana to New York City. He traveled there to pursue his dream. With little connection to the entertainment industry, it was hard to imagine Gaffigan had little if any chance of making his dream come true. Despite his lack of connection he steadily climbed the ladder to success as a stand-up comic. Eventually he landed a spot on "The Late Show with David Letterman." Gaffigan was then personally chosen by David Letterman to develop a sitcom for World Wide Pants. "Welcome to New York" made its debut on CBS about 18 months later. From there he became even more successful landing guest appearances in shows like "That 70's Show", "Sex and the City", "Third Watch", "Ed" and "Law & Order."



Commercial roles were next on Gaffigan's list of appearances. Many people recognize his face from very popular commercials. Gaffigan has participated in award-winning commercial campaigns such as Sierra Mist, ESPN, Saturn and Rolling Rock. His commercial appearances earned him Business Week's 1999 "Salesman of the Year".

While acting is a love of Gaffigan's, his style of comedy is one that stands out to his viewers. It is a rather quiet style, but packed with humorous commentary. A notable characteristic of

Gaffigan's act is his use of different characters. "Man on the Street" is a character embodying the things he did as a kid, such as talking to strangers. This he used in some commercials and skits. Another character of Gaffigan's is "Talking Heads". He likes to say what he feels people are thinking as he is performing. Whichever character Gaffigan chooses to portray, audiences seem to respond quite well to the comedy in each.

Gaffigan is scheduled to perform on the Penn State Behrend campus Friday Dec. in the Junker Center. Tickets are on sale now in the Reed Union Building and online. The admission is \$30 for the general public and \$20 for Penn State Behrend students. Material for Gaffigan's act will be coming from his "Beyond the Pale" special. His three-month Comedy Central Live tour sold out 32 of 38 shows performed. His comedic style and humorous banter are sure to create an entertaining show for all to enjoy.



Better Ingredients.
Better Pizza.

Behrend College Specials

Monday - Thursday

2 Large 1 Topping

\$15.99

or

UNLIMITED TOPPINGS*

3 Medium

\$21.00

Thursday - Sunday

Buy 1 Get 1 Free**

824-8282

* Excludes double toppings and extra cheese

** Cannot be combined with any other offer or special