

ENTERTAINMENT

Word Of The Week:

parallelepipedous - par-al-lel-e-pip-e-dous - adjective - possessing six faces, all parallelograms.

My friend Jeff wouldn't stop talking, so my buddy and I cut out metal parallelograms and attached six of them to his head. Then we laughed and called him parallelepipedous.

Enchanted finds a place amongst Disney classics

By Scott Muska
student life editor
sm5082@psu.edu

Walt Disney Pictures has always been known as one of the most prolific and successful entertainment companies in the entertainment business, and they have always been at the forefront of film technology and development.



CONTRIBUTED PHOTO

Enchanted is Disney's newest release, and may find a place amongst Disney classics.

Disney's calling card has always been their creation and re-hashing of classic fairy tales, and they've taken it a step further with their latest release, *Enchanted*, which is a film that combines cartoons with real action when a princess is cast into the real world from an animated land by her evil soon-to-be stepmother.

Not long after the princess is forced into the real world, her prince--whom she is slated to marry the day of her disappearance--gallantly follows her into a strange and advanced world entirely different from their homeland, Andalazia: New York City. A talking chipmunk who happens to be the princess's best friend follows the prince to aid in the attempted rescue of their princess.

The movie is fraught with countless allusions to previous Disney fairy tales, including everything from the true love's kiss from *Sleeping Beauty* to Cinderella's glass slipper.

The graphics portrayed in the cartoon aspects of the film quickly show an older viewer how extreme the advances of technology have been since the releases of the first Disney movies.

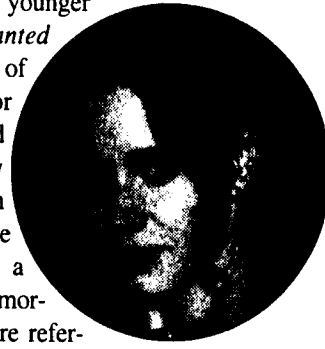
It's not at all surprising that *Enchanted* has been touted by some critics to be the next big classic in children's movies, since it incorporates such a great deal of children's culture. The movie is borderline musical, with the Princess, who is played by Amy Adams (*Talladega Nights*) and the Prince, James Marsden (*X-Men*, *The Notebook*) singing both to one another and seemingly everyone else they come across. The movie is also filled with countless adorable animals, some in the city and some in animated Andalazia.

In spite of a marketing campaign that was geared

primarily toward younger viewers, *Enchanted* offers quite a bit of entertainment for babysitters and parents who may find themselves in the theater. The writers included a smattering of humorous popular culture references in the dialogue to go along with their allusions to previous generation fairy tales. There were even a few instances of adult humor that was tasteful enough that they could make older viewers chuckle while going over most primary schoolers' heads.

The casting of Patrick Dempsey, better known as "Doctor McDreamy" from the hit television drama "Grey's Anatomy," as a main protagonist in the film may have helped ticket sales in the adult field. Suffice to say that most of the women who found themselves in the audience were probably not disappointed.

Enchanted could very well become the next classic children's movie. It's a movie that can entertain all ages in a tasteful manner, something that is diminishing in the entertainment industry year after year. One of the only negative points of the movie is its predictability, especially towards the end of the film. If there's babysitting to be done, though, and the children want to head to the movies, *Enchanted* makes an excellent choice for the next family outing.



CONTRIBUTED PHOTO
Actress Amy Adams.

Student Apartment Available!

Spring '08
January 12 - May 10

2 Bedroom
Fully Furnished & Equipped
\$350 security deposit
\$1600/semester
(Includes rent & utilities)

For additional information
(814)899-1602

Entertainment Student Poll

E-mail your top 5 comedy movies ever to cis5060@psu.edu! Top answers will be displayed in next week's paper.

Upcoming releases:

Movies

I Am Legend
~Dec. 14~

Will Smith stars in this movie based on the book of the same name. The entire world's population is affected by a virus which turns them into mutants and Dr. Robert Neville (played by Smith) is the only immune person on the Earth. As the last hope for humanity, his ultimate mission is to find a way to cure the beasts who have been affected by the virus.

Rating: Not yet rated



The Golden Compass
~Dec. 14~

In his upcoming movie, directed by Chris Weitz, a young girl finds herself in an epic struggle over a magical dust which has the potential to unite mankind. She finds herself in a struggle involving many mystical elements. Aided by armored bears, the fiercest warriors, she must venture to the far north to retrieve this famed magical dust before those who wish to destroy the world.

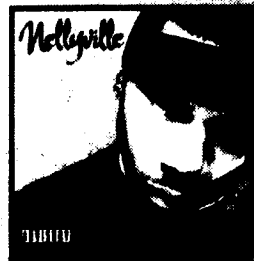
Rating: PG-13.



Music

Nelly
~Dec. 11~
Brass Knuckles

This is Nelly's fifth studio album. It's spawned two singles and will have 14 tracks.



Wu-Tang Clan
~Nov. 20~
The 8 Diagrams

This is the Wu-Tang Clan's first album release since Iron Flag in 2001, and their fifth album total.



Mary J. Blige
~Dec. 18~
Growing Pains

Mary J. Blige's much anticipated album has been pushed back again to Dec. 18.



JOHN M. LILLEY LIBRARY FALL 2007 FINALS SCHEDULE

Monday, Dec. 3 until
Thursday, Dec. 20, 2007

Mon -Thurs	8 a.m. - 1 a.m.
Fridays	8 a.m. -10 p.m.
Sat, Dec. 8	8 a.m. - 10 p.m.
Sat, Dec. 15	10a.m. - 10 p.m.
Sundays	10 a.m. - 1 a.m.
Fri, Dec. 21st	8 a.m. - 5 p.m.



SANTA'S SPECIAL SALE FOR STUDENTS

BEHREND BOOKSTORE

THURSDAY, DEC. 6
6PM - 9PM

20% OFF CLOTHING (checkout all our new Under Armour items),
IMPRINTED GIFT ITEMS,
SUPPLIES, CARDS, TRADE &
REFERENCE BOOKS

STOP BY THE FOR REFRESHMENTS

ENTER A CONTEST TO WIN A \$100.00 GIFT CARD