

STUDENT LIFE

WWE: Professional Wrestling - World's Worst Entertainment?

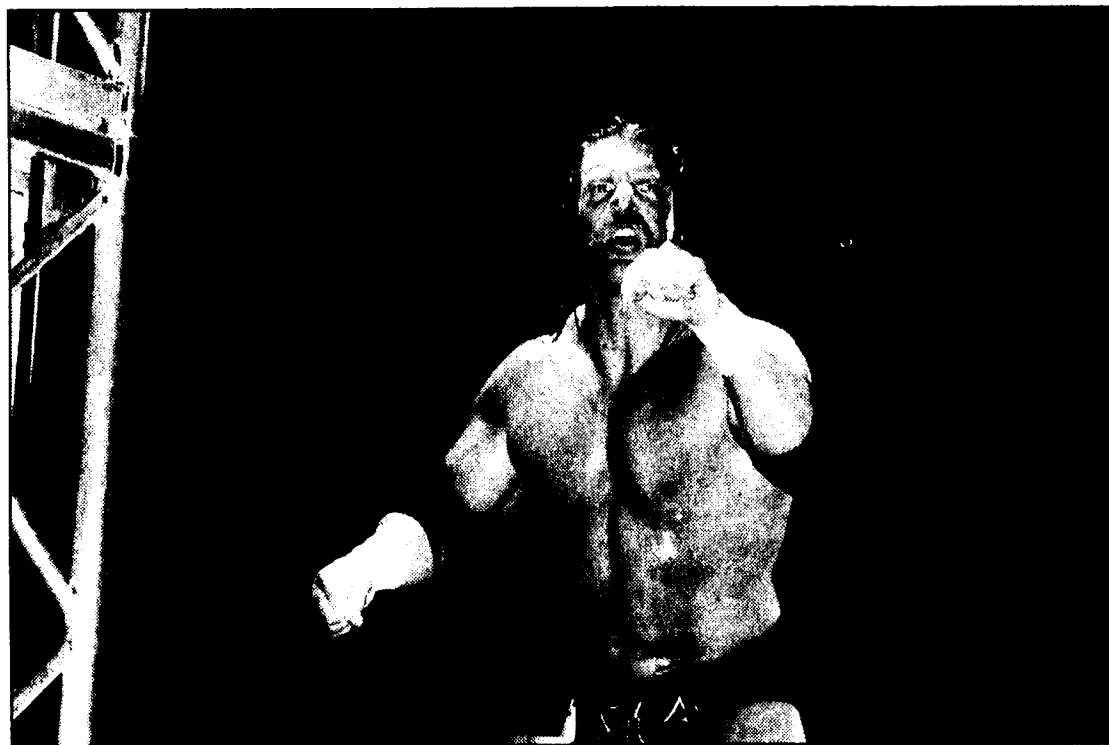
By Ryan Gallagher
contributing writer

The topic has been discussed and analyzed by thousands in an attempt to answer a simple question
Why?

While I do not possess any knowledge on the subject, I do know that there is no good reason for half naked, grown men to be fake-fighting for an audience that consists of children and strange men. Either put some clothes on or hit each other, please. I suppose I can see the reason that many younger children become involved with the wrestling fad for the simple reason that they are still in their youth and are very ignorant to everything and anything.

Wrestling is not a sport or a competition; it's theater in the worse possible form.

If you're still watching wrestling once you hit your teens, I think it's time to pick a new hobby or start a collection of good



CONTRIBUTED PHOTO

Famous World Wrestling Entertainment act Triple H poses before a match. Triple H and other wrestlers take part in a controversial sport that has been judged on its significance and fabrication.

comebacks.

After a brief conversation with one of my good friends, I found out that there are, in fact, students at Behrend who are still very much into WWE (for-

merly WWF). Recently, students gathered to watch the 23rd "Wrestlemania" event. "It may seem a bit childish, but it's one of those things where if you watch it growing up, it's never going to be out of

your life," said one fan.

"Wrestlemania" is a special event where one has to actually pay extra to view it in their home. This means that there are Americans throughout the country that are paying to sit in front of a television to watch big guys pretend to wrestle. I have a great offer to those of you that fall into this category. Next year, when it's time for Wrestlemania, just call me up because I know who wins. Ready? No one. No one wins. You can't win at something that doesn't exist.

Wrestling is not a sport or a competition; it's theater in the worse possible form. The wrestlers are the actors and the ring is the stage. The director is non-existent because it's just a bunch of chaos. And don't forget the audience. The audience is crucial to every wrestling event because they bring signs. What is the deal with all the signs? The actors aren't reading them because they're probably illiterate and the people at home already changed the channel, so put the 7394 signs that you made away.

If you are a wrestling fan and I am offending you, I am not sorry, but I would like to offer you help. The next time a wrestling event appears on the tube, do anything else except watch the program, and it will be better for you. Simply pressing the power button and staring at a blank screen will solve all problems. If you still need help, a career in wrestling is a very promising one. Have fun.

Shark's eye view: a photo tour of Penn State Behrend

By Mike Sharkey



Chip or Dale? You make the call...



Glenhill Farmhouse



Hot dog anyone?



Have you been to the gorge lately?



THINKING ABOUT SUMMER? Secure a job today!

Telatron is the perfect place to work days or evenings and earn the money you need!

Apply for one of our available positions for:

Customer Service Representative

Answer incoming calls and help customers with their accounts.

Management Trainee

For college graduates who want to become a member of our management team!

MIS Trainee

Use your MIS or Computer Science degree to join our cutting edge MIS team!

We offer:

- * Great Wages
- * Bonus Pay Opportunities
- * Employee Appreciation Days
- * Free Parking
- * Onsite Café
- * And much more!

Call Us Today! 866-1900

Telatron Marketing Group, Inc. 1545 West 38th St. Erie, PA 16508 www.telatron.com

Top Billboard Digital Albums

1. Amy Winehouse- Back to Black
2. Modest Mouse- We Were Dead Before The Ship Even Sank
3. Good Charlotte- Good Morning Revival
4. Tim McGraw- Let It Go
5. Joss Stone- Introducing Joss Stone
6. Young Buck- Buck The World
7. Daughtry- Daughtry
8. MIKA- Life In Cartoon Motion
9. Macy Gray- BIG
10. Elliott Yamin- Elliott Yamin

Become part of the Beacon staff for next year! Stop by the Beacon office or email CSL5005@psu.edu for more information on how to get started.