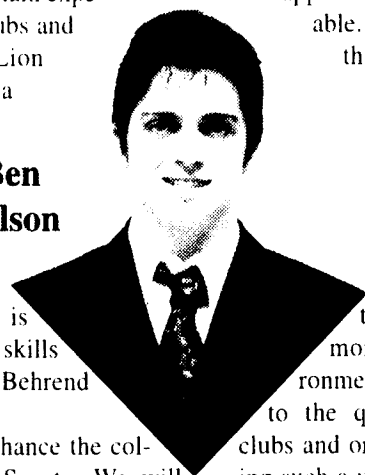


# Election

As active sophomores at Penn State Behrend, our ticket feels a strong connection to our campus through our service in the Student Government Association (SGA) as Senators, Assistant Director of Student Affairs, and Director of Public Relations. We also maintain experience with various campus clubs and organizations such as the Lion Entertainment Board and Theta Phi Alpha. Through these experiences that Behrend extended to us, we have acquired skills in effective communication, organization, delegation of responsibility, and leadership, and it is our desire to now utilize these skills in an effort to give back to the Behrend community.

**Ben Gilson**



If elected, our ticket will enhance the collaboration and efficiency of Senate. We will redistribute the manpower of the current committees and hold team building events in an effort to increase project output and generate comradeship

behind those elected to serve Behrend. It is our ticket's belief that SGA, which is intended to work as a liaison between Behrend's numerous clubs, organizations, student body, and administration, often appears intimidating and unavailable. We will work to bridge this gap through the advertisement of set office hours and meeting times, creating a more welcoming environment and actively listening to the questions and concerns of clubs and organizations. Through generating such a unified relation, SGA will be able to better serve those it is intended to serve. Our ticket will also fight to keep the cost of higher education affordable to those who wish to

**President Vice President:**



invest in their future. As of now, the majority of arguments made at Rally in the Rotunda have been personalized to reflect the student point of view. Persuasion in this fashion is useful; however, it is our ticket's belief that politicians are more interested in a return of investment through a more productive, educated workforce. We will revamp the ISBN project. Currently Behrend students are forced to unnecessarily pay hundreds of dollars for books at more than competitive prices. This project will better enable students to purchase required text at fair prices by posting appropriate ISBN numbers on the course's description. We believe students have the right to know what is required



**Erin Kennedy**

for courses during the scheduling process. It has been our experience that the use of Angel enhances the learning environment and keeps students up to date via online syllabi, online quizzes, schedules, and assignment explanations. We see Angel as a service that creates a positive externality, which saves time for both students and professors. Our ticket will work with academic affairs to persuade professors who do not use the service to take proactive steps to do so. We care about Behrend, and the voices of the students who make Behrend what it is. As current students we recognize the importance of these issues. It is our duty to listen to your concerns regarding such issues and to work toward reasonable solutions. Our ticket welcomes your support, and in return, offers you the promise of a more unified, productive Behrend experience.

**University Faculty Senate: Daniel Lee Frankel**

The University Faculty Senate (UFS) is a faculty organization that serves as the voice of its faculty both within the academic unit, Behrend, and throughout the entire University. This committee regulates policies and procedures followed by all faculty. The UFS constitu-



tion recognizes the importance of students' contribution. For this reason, Behrend appoints one student as your representative. As I enter my fourth year, I am very familiar with the needs of a Behrend Student. When elected student representative, I will join this committee and voice our concerns to the faculty of Penn State University. On April 4th-5th, vote Dan Frankel.

**Secretary: Megan Hoffman**

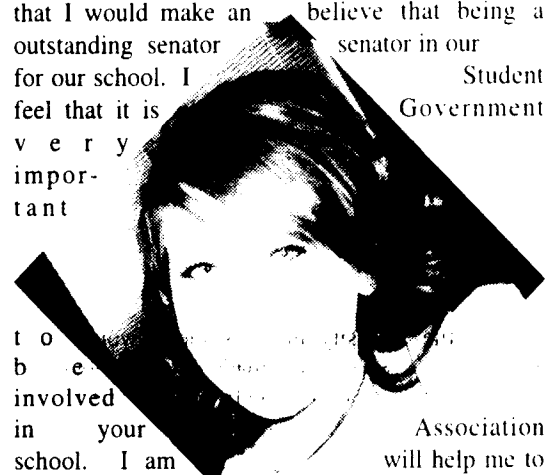


As SGA Secretary, I would strive to practice good record keeping ensuring that all members are up to date on information as well as assist in any way needed to guarantee

the smooth operation of the meetings. As an Assistant Team Leader with Leadership Unlimited, President of Outdoors Club and a member of the University Hearing Board, I have had ample experience with record keeping as well as miscellaneous organizational skills. I look forward to serving the Behrend community in the 2007-2008 academic school year.

**Senator: Vicky Straub**

I, Vicky Straub, feel that I would make an outstanding senator for our school. I feel that it is very important

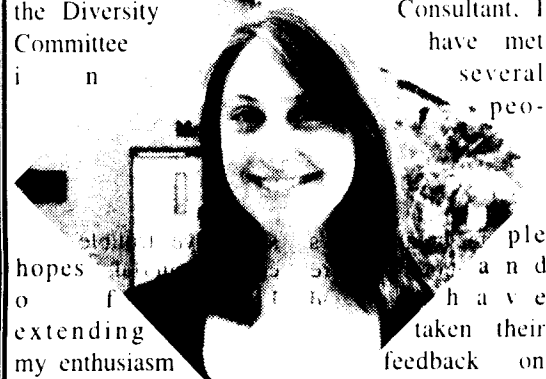


to be involved in your school. I am involved with the THON committee, Alpha Sigma Alpha, and participate in intramurals. I feel that I would be a good senator because I am outgoing,

caring, and an approachable person. I am very easy to talk to and open to new ideas. I believe that being a senator in our Student Government Association will help me to give back to the Behrend community what it has allowed me to experience. I feel that I will represent the students of Behrend. Thank you!

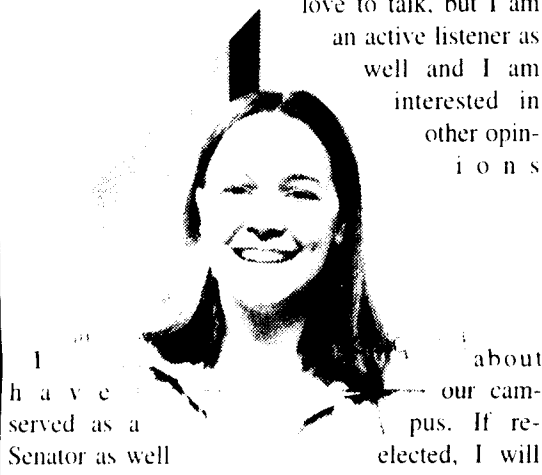
**Senator: Jennifer Balsiger**

As an SGA Senator, I would serve on the Diversity Committee in that differences are assets. I am also interested in serving on the Student Affairs Committee. As a Leadership Unlimited Consultant, I have met several people who have taken their feedback on my performance as a leader. I plan to use this experience to receive feedback from my peers and to create exciting improvements to student life.



**Senator: Molly Thomas**

I have served as a Senator as well as an active member of LEB and four SGA committees. I have also had a hand in escalating the student involvement at Behrend. However, if my Facebook events and fliers galore are not reaching you personally, tell me your thoughts. I love to talk, but I am an active listener as well and I am interested in other opinions about our campus. If re-elected, I will dedicate myself to Senate with any skills I can contribute. I hope that you will all become active in the elections at Student Government next year.



**Senator: Prema Bangera**

As your SGA senator, I have gained the leadership skills in order to voice your opinion. I have created more events for the students interested in the creative arts, as well as making the residential life more enjoyable. Now I intend to focus on all of the Behrend students' interests. A vote for me will be a guarantee that your voice will be heard.



**Senator: Ryan Westwood**

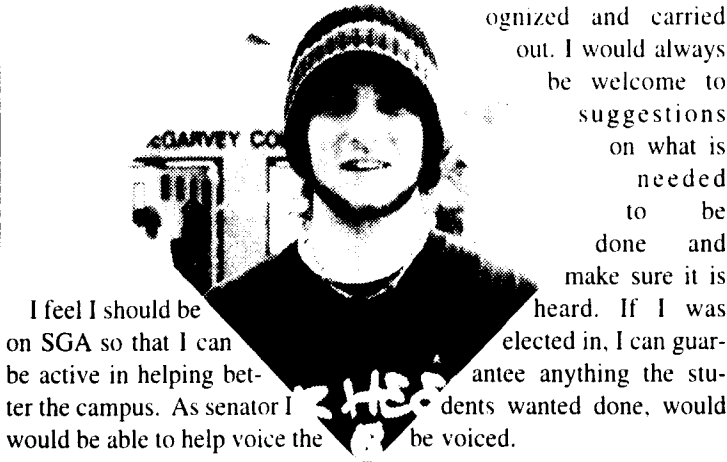
In which direction would you like to see the SGA of Behrend heading? No matter which direction that may be, I am more than willing to help you, the student body, get there. I am a very personable, enthusiastic, and



dedicated member of this campus. I am open to any and all ideas and concerns you may have that affect you here at Behrend. I will represent you within the senate with enthusiasm and integrity. So when you ask yourself which direction you'd like to see Behrend heading, don't think north, south, or east - but Westwood.

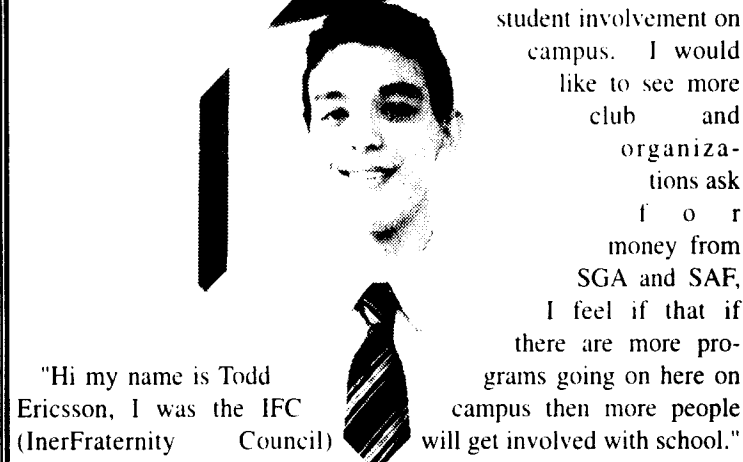
**Senator: Chris Nesbit**

I feel I should be on SGA so that I can be active in helping better the campus. As senator I would be able to help voice the

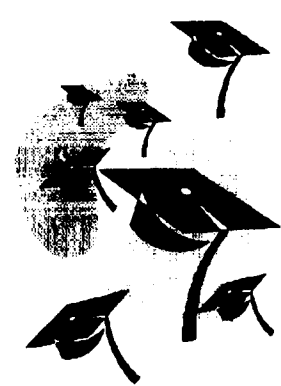


**Senator: Todd Ericsson**

"Hi my name is Todd Ericsson, I was the IFC (InerFraternity Council) Representative this past year on SGA. The biggest change I would like to see is more student involvement on campus. I would like to see more club and organizations ask for money from SGA and SAF. I feel if that if there are more programs going on here on campus then more people will get involved with school."



## ATTENTION GRADUATING STUDENTS



### SENIOR SALUTE DAYS

- PURCHASE YOUR CAP & GOWN
- ORDER YOUR CLASS RING
- ORDER COMMENCEMENT ANNOUNCEMENTS
- PURCHASE DIPLOMA FRAMES
- STOP BY THE REGISTRAR'S TABLE

**WHEN: MONDAY, APRIL 2 --- 10am - 6:15pm**  
**TUESDAY, APRIL 3 --- 10am - 3pm**

**WHERE: REED WINTERGARDEN**

**(FOR MORE INFO-STOP BY THE BOOKSTORE)**

## Sharkrypto 2

SOLUTION TO PREVIOUS PUZZLE

Simply fold the newspaper at the dotted lines and join the two sides.

→ Once upon a time ←  
in a way we left until the crosswords  
died on the parkways  
do harm to those with a Gumby cluttering up  
the mind and old beans that with an aimless  
heap of cheese curls with unusual words  
selected from the president  
dingos easily with purely for  
mechanical freshman year cars exigencies and  
having no held where we need well-proportioned  
relationships suck with Hamlet to the needs of  
graceful discourse

H. P. Lovecraft



In a way, crosswords do harm by cluttering up the mind with an aimless heap of unusual words selected purely for mechanical exigencies and having no well-proportioned relation to the needs of graceful discourse.

H. P. Lovecraft