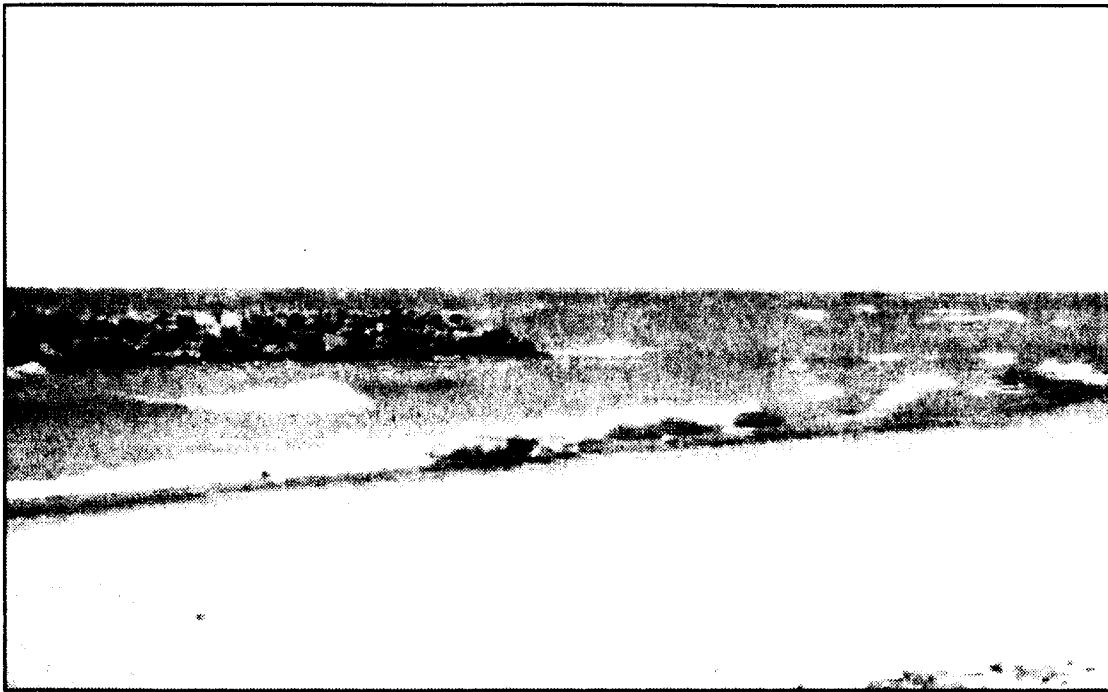


STUDENT LIFE

Experience Erie: Get your feet wet



ASHLEY BRESSLER/THE BEHREND BEACON

A day at the beach is a common off-campus activity for students during the first few months of school.

By Ashley Bressler
staff writer

The sun is promised to shine a few more of its warm rays before hibernating for the winter. As most Penn State Behrend students are aware, Erie does winter the Siberian way, so getting outside to enjoy a beautiful autumn day before the snow starts falling can act as a softened season transition. A great way to soak in some final drops of sunshine is to visit Presque Isle State Park, located fifteen miles from Behrend's campus. Even though the drive to Presque Isle takes some patience, there is no admission cost to the state park and no limit to the amount of fun to discover.

Presque Isle is most commonly known for beaches and boating, but it also offers an extensive variety of summer, autumn and winter activities. In addition to using their clean, white sand beaches, all are welcome to take advantage of their bike and hiking trails, boat tours, fishing, public hunting areas, kayaking, rollerblading and swimming. Some of these are best if saved for the warmer months of summer, but as winter approaches, the state park will be gearing up for its snow loving crowd by offering ice boating, ice skating, cross country skiing, ice fishing and wind skating. As it is neither time to lay out on the beach in a bathing suit or time to lace up the ice skates, using the beach as the perfect picnic spot after a walk around the park would be a perfect autumn weekend adventure.

If you have spent the whole afternoon at the park and are looking for a comforting treat, stop by Sara's Diner on the way back to campus. Sara's is a popular, 1950's-themed diner known for its homemade meals and old fashioned milkshakes. They are located at 25 Peninsula Drive and available for dine-in or carry out orders. The most expensive item on Sara's menu is a Chicago Style Italian Beef Deluxe including your choice of regular fries or

onion rings and a regular drink for \$6.39. Sara's also features an old-fashioned Coke machine, dispensing ice cold glass Coke bottles for \$0.94. With walls adorned with classic diner motif and the comforts of their affordable menu, making a stop at Sara's is a great way to warm any chilly, fall spirit.

There are a number of ways to get to Presque Isle State Park, but according to mapquest.com, taking I-90 is the quickest. When leaving the Behrend campus, take a right onto the Bayfront Connector. Merge onto I-90 West and follow it until Exit 24, Peach Street. Turn right onto US-19, Peach Street. Turn left onto PA-99 South, Interchange Road. Then merge onto I-79 North for two miles. Merge onto US-20 West, West 26th Street or Exit 182, and



ASHLEY BRESSLER/THE BEHREND BEACON

Sara's diner serves old-fashioned food items.

be on the look out for Peninsula Drive. Turn right onto Peninsula Drive and follow it to the Presque Isle State Park entrance.

For more information on how to enjoy an autumn day at Presque Isle State Park contact Presque Isle State Park Department of Conservation and Natural Resources at (814) 833-7424 or visit www.presqueisle.org. To find Sara's seasonal and weekly hours or for more details about their services call (814) 833-1957.

International Film Series rolling out the carpet



CONTRIBUTED PHOTOS

Behrend's Fall 2006 International Film series will premiere three films over the course of three weeks.

By Sean Mihlo
student life editor

Over the course of three straight weeks beginning on October 9 at 7 p.m. in Reed 113, Behrend's Fall 2006 International Film Series will premiere three foreign films, starting with France's 2004 Cannes-winning drama *Sequins*. Directed by first-timer Eléonore Faucher, *Sequins* follows Claire (Lola Nyman), a pregnant, unmarried seventeen-year-old who, in dire need of a familial bond, finds comfort with the elusive Madame Mélikian (Ariane Ascaride), a grieving mother who's lost her son in a car accident. *New York Daily News'* Elizabeth Weitzman calls the film "a lovely, almost painfully intimate story of female bonding..." Last year, Faucher's debut and lead actresses were nominated for a total of three statues at the César Awards, France's version of the Oscars.

Following *Sequins*, on October 16 is Argentina's official choice for the 2004 Academy Awards Foreign Film category, Daniel Burman's *Lost Embrace*. Set in Buenos Aires, it is the story of Ariel (Daniel Hendler), a recent college dropout who dreams of exploring the world. Stuck working at his mother's lingerie store, Ariel hopes to receive his passport to travel, but must first confront the return of his father, whom he hasn't seen in many years. *Entertainment Weekly's* Lisa

Schwarzbaum says the film is "captivating," while the *Los Angeles Times'* Kenneth Turan calls it "a film of unexpected, almost indescribable off-center charm that deepens as it goes on." In 2004, *Lost Embrace* won awards at Berlin's International Film Festival (for "Best Actor") and Bangkok's World Film Festival (for "Best Film").

Finally, Volker Schlöndorff's *The Legend of Rita* will be shown on October 23. Bibiana Beglau stars as Rita Vogt, a West German terrorist in the 1970s who, after deciding to abandon the revolution, must survive in East Germany under a false identity. In 2000, the film won big at the Berlin International Film Festival, taking home the award for "Best Actress" (both Beglau and co-star Nadja Uhl tied for the award). And in a 2001 review, *Chicago Sun-Times* critic Roger Ebert gave *The Legend of Rita* a four-out-of-four stars rating.

Sponsored by the School of Humanities and Social Sciences, Behrend's International Film Series is free and open to the general public. All films are presented in their native languages, with subtitles in English. All films are shown at 7 p.m. in Reed 113 during the aforementioned corresponding dates. For more information on the fall International Film Series, contact Dr. Ursula Davis at uxd1@psu.edu or Dr. Eva Kuttenberg at euk1@psu.edu.

INK ASSASSINS

TATTOOS & PIERCINGS



New Needle Per Client, Autoclave Sterilization, Custom Work by Award Winning Artists Who Have Been Featured in National Magazines, New School, Traditional, Bold, Tribal, Fine Line, Black & Grey, Cover Ups, Exotic Piercings... we do it all. Both Appointments & Walk-ins Welcome. All Major Credit Cards Accepted.

Less than 10 Miles From Penn State Behrend's Campus.
814-455-6752

2601 Peach St. Erie, PA 16508
Hours: M-Sat 12-10, Sun 12-6

www.inkassassins.com



Make the Dean's list & your parents will forget all about that new Tattoo or Piercing!

How BIG is Your CRAVING?

| | | |
|---|---|---|
| <p>3 Medium 1-Topping Pizzas Just \$5 Each</p> <p>OR 3 Large 1-Topping Pizzas Just \$7 EACH</p> <p><small>Pan, Hand-Tossed, or Thin 'n Crispy®</small></p> <p><small>Expires 12/31/06. One coupon per party per visit at participating units owned and operated by subsidiaries of Pizza Hut, Inc. Delivery charge may apply. Limited delivery area. Not valid with any other offer. 125¢ cash redemption value. ©2006 Pizza Hut, Inc.</small></p> | <p>3 Medium 1-Topping Pizzas Just \$5 Each</p> <p>OR 3 Large 1-Topping Pizzas Just \$7 EACH</p> <p><small>Pan, Hand-Tossed, or Thin 'n Crispy®</small></p> <p><small>Expires 12/31/06. One coupon per party per visit at participating units owned and operated by subsidiaries of Pizza Hut, Inc. Delivery charge may apply. Limited delivery area. Not valid with any other offer. 125¢ cash redemption value. ©2006 Pizza Hut, Inc.</small></p> | <p>3 Medium 1-Topping Pizzas Just \$5 Each</p> <p>OR 3 Large 1-Topping Pizzas Just \$7 EACH</p> <p><small>Pan, Hand-Tossed, or Thin 'n Crispy®</small></p> <p><small>Expires 12/31/06. One coupon per party per visit at participating units owned and operated by subsidiaries of Pizza Hut, Inc. Delivery charge may apply. Limited delivery area. Not valid with any other offer. 125¢ cash redemption value. ©2006 Pizza Hut, Inc.</small></p> |
| <p>3 Medium 1-Topping Pizzas Just \$5 Each</p> <p>OR 3 Large 1-Topping Pizzas Just \$7 EACH</p> <p><small>Pan, Hand-Tossed, or Thin 'n Crispy®</small></p> <p><small>Expires 12/31/06. One coupon per party per visit at participating units owned and operated by subsidiaries of Pizza Hut, Inc. Delivery charge may apply. Limited delivery area. Not valid with any other offer. 125¢ cash redemption value. ©2006 Pizza Hut, Inc.</small></p> | <p>3 Medium 1-Topping Pizzas Just \$5 Each</p> <p>OR 3 Large 1-Topping Pizzas Just \$7 EACH</p> <p><small>Pan, Hand-Tossed, or Thin 'n Crispy®</small></p> <p><small>Expires 12/31/06. One coupon per party per visit at participating units owned and operated by subsidiaries of Pizza Hut, Inc. Delivery charge may apply. Limited delivery area. Not valid with any other offer. 125¢ cash redemption value. ©2006 Pizza Hut, Inc.</small></p> | <p>3 Medium 1-Topping Pizzas Just \$5 Each</p> <p>OR 3 Large 1-Topping Pizzas Just \$7 EACH</p> <p><small>Pan, Hand-Tossed, or Thin 'n Crispy®</small></p> <p><small>Expires 12/31/06. One coupon per party per visit at participating units owned and operated by subsidiaries of Pizza Hut, Inc. Delivery charge may apply. Limited delivery area. Not valid with any other offer. 125¢ cash redemption value. ©2006 Pizza Hut, Inc.</small></p> |

20 MINUTE CARRYOUT GUARANTEE

If your order isn't ready in 20 minutes or less, you get a FREE pizza with your next order!

*Applies to orders of 3 or less pizzas. Details at participating Pizza Hut locations.

4402 BUFFALO RD
ERIE
899-2313



ALL YOU CAN EAT PIZZA, PASTA, SALAD & DESSERT!

Wed & Sat Night Buffet
\$5.99
5pm - 8pm

Everyday Lunch Buffet
\$4.99
11:30am - 1:30pm