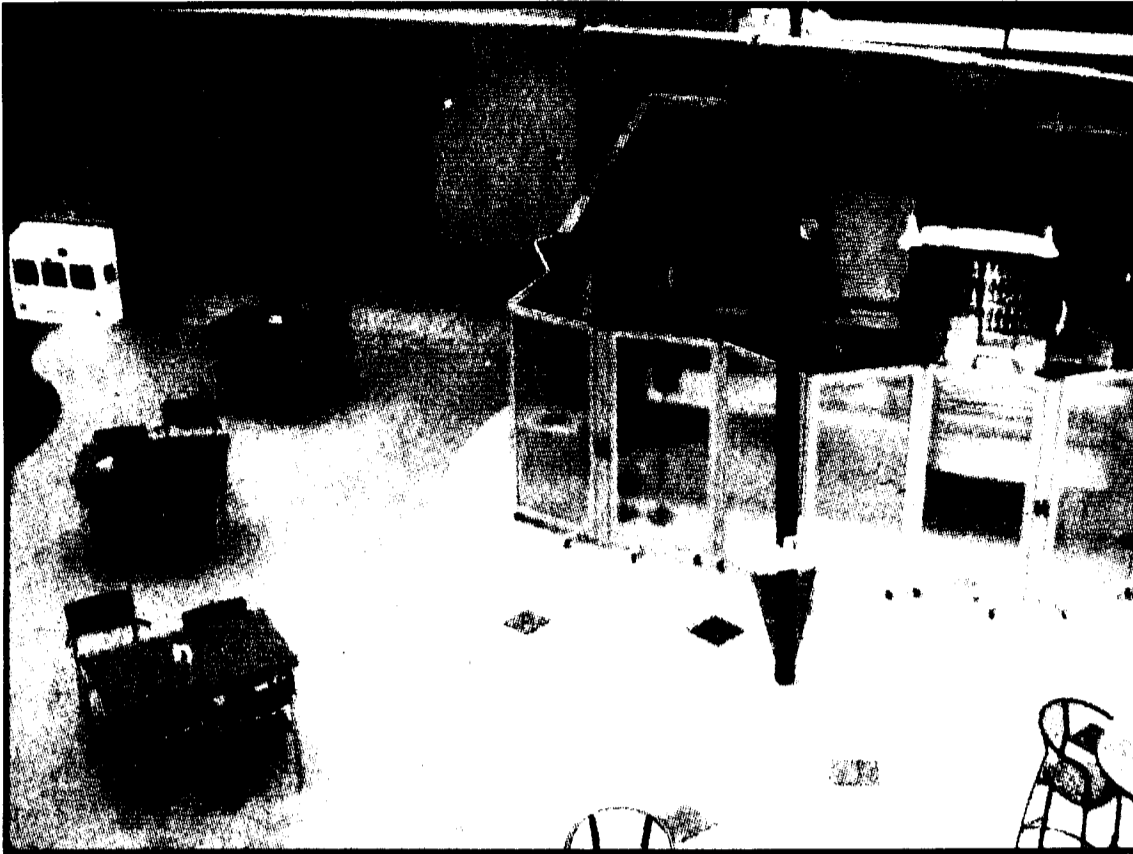


Orientation Edition

REDC in Review



Stephen Kabasinski/THE BEHREND BEACON

REDC STATS

- > Research and Economic Development Center
- > \$30 million to build
- > Size: 160,000 sq. feet
- > Constructed for over 2 years
- > 57 faculty offices
- > 24-hour Computer Lab Access
- > 17 additional Behrend classrooms
- > 10 mechanical systems labs
- > 5 engineering computer classrooms
- > 5 25-seat CAD/CAE labs
- > 4 plastics processing labs
- > 1 Senior Design/Project Room
- > 1 25-seat software design lab
- > Largest Undergraduate Plastics Training Center in America
- > Wireless Internet Access
- > Cafe at the REDC
- > Business computer labs
- > Engineering Study Lounges
- > Computer systems labs
- > Dedicated Research Space
- > More administration support space

Freshmen make history at Behrend

By Ashley Bressler
staff writer

Penn State Behrend is the place to be! The largest incoming freshmen class, consisting of approximately 1,072, is proof that the improvements made to the campus were worth all the time and effort. The Behrend campus is slowly coming to life with the anticipation of the 2006 fall semester. Upperclassmen, fall sports athletes and international students are moving in and admiring the renovations made over the summer, but the real excitement will erupt today as the incoming freshmen arrive, bringing new enthusiasm and life to the campus. The applications for this fall at Behrend are up 15 percent from last year, which has caused a lot of excitement in all departments on campus.

While the increase in admissions at Behrend is a great accomplishment, Behrend is not the only campus benefiting from the renewed interest in Penn State University. A university-wide admission increase has occurred, with an impressive 91,598 applicants for admission to undergraduate, graduate and other programs this semester. This increase could be due to a number of things according to Ken Miller, Director of Student Affairs. Miller said he believes the increase at Behrend has a lot to do with the addition of the new \$30 million Research and Economic Development Center (REDC).

"There are a lot of reasons why there are so many students deciding to come to Penn State. All of the locations are up, but for Behrend, the REDC has helped provide more opportunities for students. Housing availability has also been a big factor. With Senat and the new apartment complex across the street from campus, the housing available is at its best, and visiting students have noticed," said Miller.

Penn State University has received nationwide attention with its successful football season last year, which could also be a reason for the increase in admission. Prospective students may want to join the Penn State community, but may not want to start off at the large campus of 44,000 students, so Behrend becomes a great stepping-stone.

Advertising tactics have also altered slightly for this fall, according to Miller, who said, "We're trying to reach out to students who are at other Penn State campuses. We want to make the degrees we offer well known, so that students who might be looking for a smaller atmosphere and already go to University Park can transfer and graduate from here with the same degree they want. A lot of these students aren't aware of our opportunities, and we have been trying to introduce it to them."

Whatever the advertising techniques were, they have worked, and Behrend is growing everyday. However, the increase in admissions has created a ripple effect on a lot of other aspects around campus as well. The most direct effect has been in the preparations for Freshmen Orientation. The academic convocation ceremony, which typically takes place in the McGarvey Commons is now moved to Erie Hall, which will be used a lot in this year's Orientation due to the large num-

ber of students expected to attend. There has also been a need to increase the money provided by Student Activities for some of the Orientation events, such as the volleyball game, ice cream social and the luau to provide each freshman with appropriate food, drinks and party favors.

"I can say from all my years of experience, it's a very exciting time to be at Behrend."

- Ken Miller

All departments at Behrend have put a lot of work into rearranging Orientation to accommodate the large freshmen class, but the payoff is expected to be a success. Miller said, "We're all very excited right now, excited enough with the opening of the REDC, the engineering students finding a home in the new facility, and the science students moving into Hammertill. Then, to add, the enrollment just makes it even better. I can say from all my years of experience, it's a very exciting time to be at Behrend." Hopefully these new freshmen will prove to be the future of Penn State Behrend, continuing to excel in sports and academics and bringing pride and recognition to our growing community. Overall, Penn State Behrend is excited to welcome the new freshmen and encourages them to join the clubs, activities, and social events that make our community the thriving success it has become.