

# NEWS

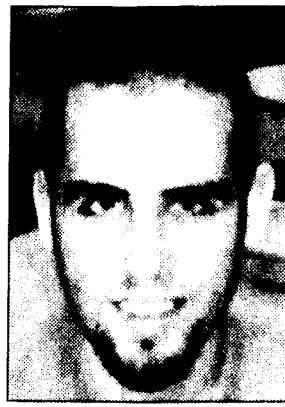
## How will the addition of the REDC affect campus next year?



"It will make it bigger."  
John Stranahan  
Communications 10



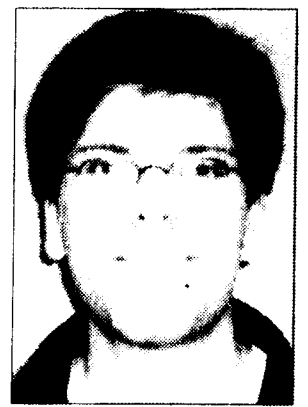
"It will provide a lot of new resources for students."  
Ben Raymond  
Communications 06



"The distance between everything on campus will probably cause problems."  
Kyle McKerrow  
Communications 06



"It expands the campus a lot. It'll attract more people to Behrend."  
Emily Wantz  
Biology 04



"I'm going to be walking a lot more."  
Andrew Chernauskas  
Software  
Engengineering 06

Have a suggestion for question of the week? E-mail ideas to editorinchief@psu.edu.

### Transferring to Main Campus?

Check Out!

### ApartmentsStateCollege.com

- Best Prices on Graduate and Undergraduate Housing
- Apts, Houses & Townhouses near Main Campus
- Visit us On-line or Call Toll Free (877) 630 – RENT

Bring This Ad & Your Erie PSU Student ID for  
**\$100 Off 1<sup>st</sup> Months Rent**

### Behrend Briefs

Penn Penn State Erie will again be offering over 70 weeklong classes this summer in its program to educate, entertain and inspire youth between the ages of six and 18. The College for Kids summer session starts Jun. 12 and runs through Aug. 11, with the exception of the fourth of July week. Classes will be organized by age group for both the morning and afternoon sessions. The costs for the courses vary but start at around \$70 per week, with special supervision available before and after classes for \$10 per week. Summer schedule and registration information are available online or by contacting Mary Trott. Registration begins Monday, Apr. 24. Early registration is encouraged.

Thirty different student organizations and the Behrend students and faculty gathered over half a ton of nonperishable food items for several charitable organizations. "This has been an outstanding year of generosity from Penn State students," said Kelly Shroul, coordinator of community service and the Smith Chapel. "Collectively, Penn State Behrend students donated 1,356 pounds of food to the Second Harvest Food Bank, accumulated 6,522 hours of volunteer services and raised more than \$20,500 for charitable organizations." More information is available on the Penn State Erie website.

### Police and Safety

4/13/06

Complainant reported that someone had broken into their apartment.

4/14/06

Complainant reported that the computer screen that sat outside the main mailroom customer desk was taken sometime between 5 p.m. Thursday and 10:30 a.m. Friday. More information pending.

4/14/06

Complainant reported that his tailgate had been stolen from his truck overnight.

4/16/06

A fire alarm activation was reported in apartment 306. After smoke was discovered in the building, the fire department was alerted. Department personnel discovered suspected drugs while searching for the source of the smoke.

4/17/06

The Library staff reported a person being very disruptive by yelling and cursing at the staff and rolling on the floor.

#### LIBRARY HOURS DURING FINALS WEEK

Monday, April 17 through Thursday, May 4

Monday - Thursday	8:00 a.m. - 1:00 a.m.
Friday	8:00 a.m. - 10:00 p.m.
Saturday	9:00 a.m. - 10:00 p.m.
Sunday	9:00 am. - 1:00 a.m.
May 5, 6 & 7	
Friday	8:00 a.m. - 5:00 p.m.
Saturday & Sunday	CLOSED

*One of the Most Experienced  
Criminal Defense-Trial  
Lawyers in Erie County!*

**Thousands of Cases. Hundreds of Trials!**

- DUI
- Drugs
- Assaults
- Rapes
- Sexual Assaults
- Homicides-Murders

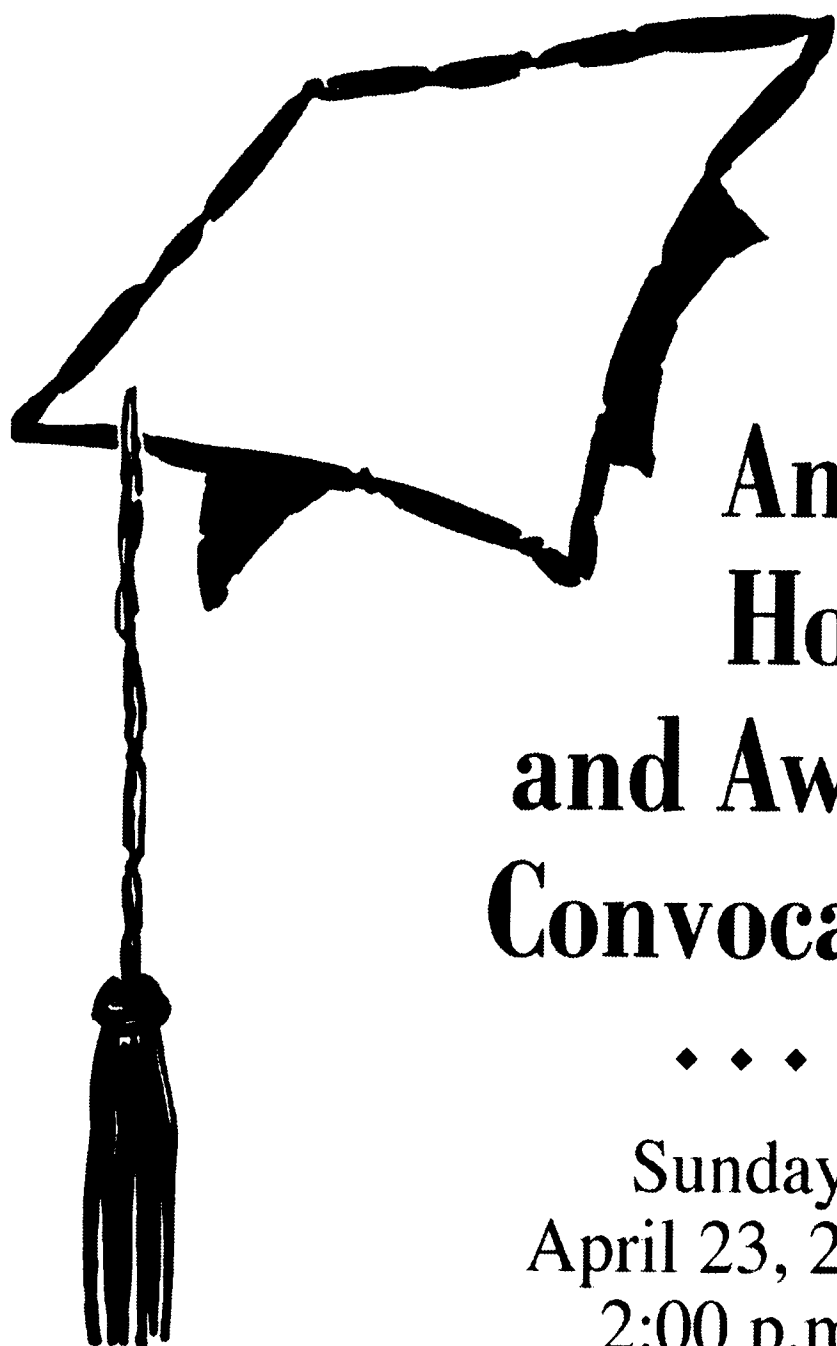
**Keith H. Clelland**  
Attorney At Law

337 West Sixth St., Erie, PA 16507  
Phone: (814) 459-7754

PENNSTATE



Erie The Behrend College



## 45th Annual Honors and Awards Convocation

◆ ◆ ◆  
Sunday  
April 23, 2006  
2:00 p.m.  
Erie Hall  
◆ ◆ ◆