

# NEWS

## Creative Writers Series to start Thursday

By Jenna Gregory  
staff writer

Thursday, September 22, poet Jeffrey McDaniel will be performing his original poetry for students and the public in the Smith Chapel on the Behrend campus at 6 p.m. The reading will be held in the Smith Chapel worship space and is preceded at 4 p.m. by a reception in the Smith Chapel living room.

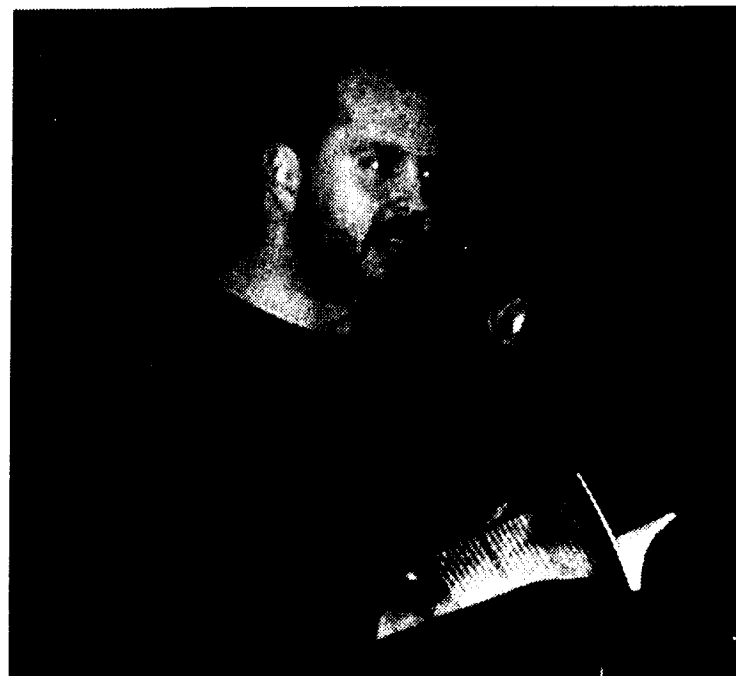
Jeffrey McDaniel's contemporary writing style and electrifying performance atmosphere guarantees a fun and exciting experience for anyone. His topics touch on issues including gender, racism, violence, drug addictions, dating, failed relationships and "What it is to be a young American in the United States," says Sean Dougherty, lecturer in English. McDaniel is a funny and extraordinary performance poet who is "over the top," claims Dougherty. Dougherty also states, "If you are going to see one [poetry] reading in your life you should see this one."

McDaniel does an excellent job of memorizing his work and bringing it to life using an intriguing delivery with a wide

array of "funny voices." Fellow poet and colleague Thomas Lux states that "Jeffrey McDaniel has stunning metaphorical abilities and he delivers this gift straight to the reader through his singing, crazy, gorgeous, and relentless heart. He is one of the best young poets on the planet."

McDaniel's accomplishments include Lollapalooza in 1994, a poetry tour through Europe and he also teaches creative writing at Sara Lawrence College in Bronxville, N.Y. McDaniel is also the author of *Alibi School*, *The Forgiveness Parade*, and most recently *The Splinter Factory*. McDaniel's poetry has been showcased in *The Best American Poetry 1994*, *An Anthology of New (American) Poets*, *The New Young American Poets*, *Ploughshares* and *American Poetry: The Next Generation*.

The Creative Writers Series is co-sponsored by both the School of Humanities and Social Sciences and the Clarence and Eugenie Baumann Smith Fund. For more information on Jeffrey McDaniel or other upcoming events please contact the School of Humanities and Social Sciences at (814) 898-6108.



McDaniels shares his poetry at the Creative Writers Series this fall. CONTRIBUTED PHOTO

## Behrend Briefs

The Penn State Child Care Center has earned accreditation from the National Association for the Education of Young Children (NAEYC), the nations leading organization for early childhood professionals. The Penn State ehrend Child Care Center provides for children from six weeks to six years.

Michael Christofferson, associate professor of history, and Sharon Gallagher, lecturer in English, have been nominated to apply for the National Endowment for the Humanities (NEH) *Summer Stipends* program for 2006. They were chosen from a number of faculty members seeking nomination.

Eric Corty, associate professor of psychology, has been appointed consulting editor to *The Journal of Sex and Marital Therapy*.

Melanie Deppen has been promoted to supervisor of Broadcast Operations at WPSE Radio.

Lauri Enterline has begin her new responsibilities as Disabilities Services Coordinator/DUS Advisor.

Mehmet Maleok, lecturer in computer science, had his paper, titled "Backward behavior of solutions of the Kuramoto Sivashinsky Equation," published in *Journal of Mathematical Analysis and Applications*. His co-author is I. Kukavica of the University of Southern California.

Rob Weissback, associate professor of engineering, and Carrie Payne, coordinator of placements and internships, attended the Career Summit at Norfolk Southern, in Atlanta, Georgia, August 24-26. The director of Career Services at Penn State University Park also attended.

## Police and Safety

9/9/05  
Officers were dispatched to OBB after a student fell ill. H/W staff assessed her at the scene before she was transported to H/w.

9/9/05  
While driving east on Stadium Drive, officer witnessed a vehicle striking a parked car in Nick Lot North. Driver of striking vehicle was issued a citation for careless driving.

9/9/05  
Duty RA reported that someone set off a fire extinguisher on the third floor west wing of Ohio Hall.

Are you interested in writing news?

Do you want to see your article in print?

Do you want your article available to 3,800 people?

Then it sounds like you want to write for the Beacon.

Submit your articles and ideas in tomorrow!



## Imani Winds kicks off season

By Tanya Doggwiler  
staff writer

Imagine a world-renowned musical ensemble entertaining students and faculty at Penn State Behrend. At this year's 16 season of the Logan Music Series, there is. The Imani Winds Quintet is scheduled to open the series with a noon performance in the McGarvey Commons on September 20.

The Imani Winds Quintet is a dynamic group, bringing together European, African-American and Latin music. Imani, which translates to "faith" in Swahili, is only

one of the words to describe the goals of this group of individuals. The word "renowned" is used due to their actions outside their musical performances. They have established, through their own success, community outreach and residency programs and a reputation that you would call inspirational. On top of outstanding reviews from big name newspapers such as the Washington Post, the New York Times, the Philadelphia Inquirer and many others, they have, in a short period of time, received the CMA/ASCAP award for "Adventurous Programming"

and the CMA/WQXR award for their latest CD "Umoja," which is described as "soulful" in a review on Grammy.com.

To prepare those of you who have yet to experience the pioneering musical talent of the Imani Winds Quintet, the Philadelphia Daily News statement is simple and concise ""

The playing glows with confidence, a spirit of freedom and the momentum of exciting music making. Go hear this exciting group of performers who create a unique sound world and offer a startlingly original musical flavor."

### MEDIUM 1-TOPPING PIZZA

# \$5.99

with coupon

OR

### LARGE 1-TOPPING PIZZA

# \$7.99

with coupon



**899-2313**  
4402 Buffalo Rd.

**825-7872**  
2007 East 38th St.

Dine-in, Carryout and Delivery

<p>MEDIUM 1-TOPPING PIZZA</p> <p><b>\$5.99</b></p>	OR	<p>LARGE 1-TOPPING PIZZA</p> <p><b>\$7.99</b></p>	OR	<p>MEDIUM 1-TOPPING PIZZA</p> <p><b>\$5.99</b></p>	OR	<p>LARGE 1-TOPPING PIZZA</p> <p><b>\$7.99</b></p>	
<p><small>Offer available on Pan or Thin 'n Crispy® crust. One coupon per party per visit at participating Pizza Hut® restaurants. Delivery charge may apply. Limited delivery area. Not valid with any other offer. Valid on up to 4 orders per person. Limit time offer valid only with current student ID.</small></p> <p><small>Offer expires December 25, 2005</small></p>				<p><small>Offer available on Pan or Thin 'n Crispy® crust. One coupon per party per visit at participating Pizza Hut® restaurants. Delivery charge may apply. Limited delivery area. Not valid with any other offer. Valid on up to 4 orders per person. Limit time offer valid only with current student ID.</small></p> <p><small>Offer expires December 25, 2005</small></p>			
<p>MEDIUM 1-TOPPING PIZZA</p> <p><b>\$5.99</b></p>	OR	<p>LARGE 1-TOPPING PIZZA</p> <p><b>\$7.99</b></p>	OR	<p>MEDIUM 1-TOPPING PIZZA</p> <p><b>\$5.99</b></p>	OR	<p>LARGE 1-TOPPING PIZZA</p> <p><b>\$7.99</b></p>	
<p><small>Offer available on Pan or Thin 'n Crispy® crust. One coupon per party per visit at participating Pizza Hut® restaurants. Delivery charge may apply. Limited delivery area. Not valid with any other offer. Valid on up to 4 orders per person. Limit time offer valid only with current student ID.</small></p> <p><small>Offer expires December 25, 2005</small></p>				<p><small>Offer available on Pan or Thin 'n Crispy® crust. One coupon per party per visit at participating Pizza Hut® restaurants. Delivery charge may apply. Limited delivery area. Not valid with any other offer. Valid on up to 4 orders per person. Limit time offer valid only with current student ID.</small></p> <p><small>Offer expires December 25, 2005</small></p>			

Submit all ideas and articles to [newseditor@psu.edu](mailto:newseditor@psu.edu)