



Track and field,  
Page 9

Coldplay, Page 8



# THE BEHREND BEACON

Friday, April 22, 2005

A Penn State Erie Student Publication

Vol. LII No. 29

## Apartment construction across street

By Dan Snedden and Sarah Weber  
assistant news editor and copy editor

This fall ground will be broken for a new apartment complex across from Behrend Fields. While encouraged by the university, the apartments are being built independently from Penn State.

There will be 60 units, with a capacity of three people per unit and a private bedroom for each individual in a unit. Each bedroom will be furnished with a bed, desk, chair, dresser and a cable internet connection.

Each unit will be 1100 square feet and will be fully furnished with a couch, chairs, coffee table, oven range, full size refrigerator and freezer and a double sink.

The complex will house 208 students, with parking spaces for all, central air, a live-in management staff and leases will be for two semesters with summer leases available.

"I've got 150 interested out of a small sample," said Jack Gordon, developer of the apartment project. "Our primary market is sophomores, juniors and seniors."

Gordon has several other apartment developments in both Edinboro and Shippensburg.

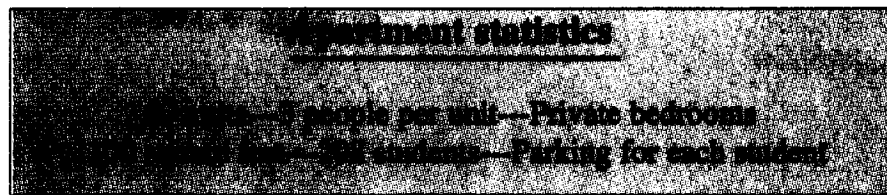
"Our credo is that we provide student housing that is the closest, nicest and best. We feel it would be quite an asset to have off-campus housing adjacent to the university."

"This will be a nice option for students to live in quality housing off campus," said Ken Miller, director of student affairs. "We have students living in basements and rented rooms and this will be much nicer." He also said that some of the plans appeared to be "very attractive."

When asked if he knew what kind of commercial properties will also be built, he said; "Perhaps a coffee shop or a Pizza Hut. They talked about a 'courtyard-type' shopping center."

"If we do find we are having trouble keeping students on campus," said Miller. "We may consider mandatory on-campus housing for freshmen like University Park does."

The apartments are expected to be completed by the fall semester of 2006.



## From Dean to Chancellor Burke's title changes campus reorganization

By Tiffany Mak  
staff writer

Under the campus reorganization plan, CEO and Dean Jack Burke will change his title to Chancellor, effective July 1.

Since many people are confused about the job of CEO (campus executive officer) and dean and not knowing that they are the same person, the Board of Trustees decided to revise the title of the CEO and dean at each of the 19 campuses involved in the structural reorganization. However, their duties and responsibilities will remain the same.

The plan of campuses co-operation is a chance to modify the admissions and academic quality at the 19 campuses, including Behrend. Future Chancellor Burke foresaw that more and more juniors would be sent to Behrend.

"If we are a system in terms of finances, then it would behoove each campus to send more students to sister campuses rather than to University Park," said Burke.

Yet there are negative views in the plan, according to Burke. Changing the situation from one out of six campuses into one out of 19 in July, budget plans, budget impact and the financial support will get more and more complicated. In

addition to the increased sister campuses, Burke showed his worry towards the attention of Behrend.

"The 19 campuses will be put under a modified cost center budget model which means resources can be moved from one campus to another," said Burke. "Whether our budget model will still be this proportion or not has to depend on the central administration."

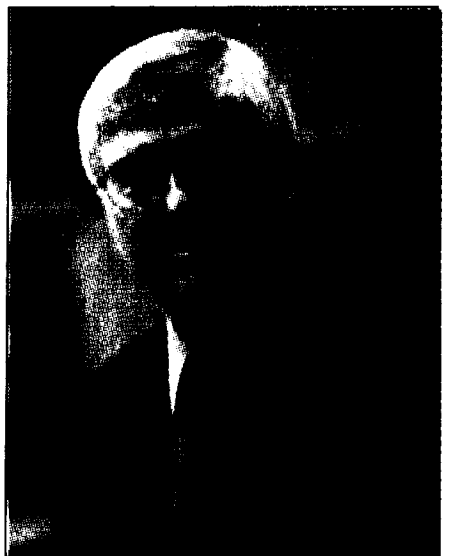
Another big problem would be the declining degree of autonomy as compared to the past. The resources and the library services will be controlled by the central administration. The board of trustees, which is elected by people in different categories, such as, agriculture, industrial, alumni, students and government decided the plan. Burke's responsibility was just to provide some principles to them; he was unable to vote.

Having served at Penn State Erie for 24 years, Burke gained abundant experience of being the associate dean and later the CEO and dean. Before that, he was the associat dean at the State University of New York's Empire State College where he was awarded the SUNY Chancellor's Award for Excellence in Teaching.

Apart from receiving his bachelor's degree in Geography in the State University College at Oswego, New

York, his master and doctorate degree in the State University of New York at Buffalo, he also earned a certificate in Educational Management at Harvard University's Institute.

While there is still a lot of existing uncertainty in each detail of the plan and the budget impact in this stage, Burke will wait and see and look forward to the plan. He estimated the school would take a year to get around the changes



CONTRIBUTED PHOTO

Under campus reorganization CEO and Dean Jack Burke will lose his title and become Chancellor

## Concert Performance



DANIELLE FAULKNER/BEHREND BEACON

Dr. Gary Viebranz directs the brass ensemble Thursday night in the McGarvey Commons. The band was separated into several ensemble groups based on instrument but the groups reconvened for the final piece.

## Pope confirms student's mother Student discovers special connection to Benedict XVI

By Sarah Weber and Dan Snedden  
copy editor and assistant news editor

People around the world celebrated the naming of new Pope Benedict XVI, but Kevin Gillespie, president of the International Student Organization and native of Germany, had a special reason to take notice.

Kevin's mother, Angelika Gillespie, was confirmed by then Cardinal Joseph Ratzinger in a special service in Munich on April 25, 1978.

"It was the most stunning mass I ever attended," said Gillespie. "Ratzinger was soft-spoken and charismatic. He shook hands, talked with us, blessed everyone and hung around with us. He was very easy to talk to and he paid attention to people. Over all, he was a very special man."

Originally a Lutheran, Gillespie converted to Catholicism for her American husband. She and Ratzinger are both from Bavaria, the only predominantly Catholic state in Germany. Though Kevin, also a practicing Catholic, was "rooting for the Nigerian because a black pope would be more significant," Gillespie said "I believe the Holy Spirit chose the right man. I believe people will be in for a surprise because he is a very humble man."

She thinks Benedict XVI will follow Catholic doctrine as strictly as John Paul II.

"When I met him, he was in his 50s and he was so good looking. He was a very handsome man," said Gillespie.

Benedict XVI, 78, had a close relationship with pope John Paul II and acted as his theological adviser for 20 years. As a Cardinal, Benedict XVI was widely known to be the least progressive of the papal potentials, opposing the liberation

theology movement, religious pluralism, challenges to traditional teachings on issues such as homosexuality and calls to ordain women as priests. It is expected that he will continue his hardline stance on Catholic tradition.



SARAH WEBER/BEHREND BEACON

Student Kevin Gillespie takes a moment to contemplate the special confirmation of his mother by Benedict XVI, recent pope inductee.

## Hallmarks part of strategic plan

By Bradley Stewart  
news editor

Recently, The Bulletin, a weekly news report released from University Relations, has been printing a series of hallmarks as part of Behrend's "institutional mission and vision."

University Relations, based on the top floor of the Logan House, has always had a goal of increasing public awareness of Behrend, but these hallmarks are part of the new strategic plan for 2005.

The strategic plan, not to be confused with the administrative plan for the whole PSU system, came out of the CEO and Dean's office. The strategic plan calls for short-term goals and assigned responsibilities made for each campus office.

The hallmarks are taken straight from the strategic plan and have received recent attention from University Relations to improve awareness and provide examples for each hallmark.

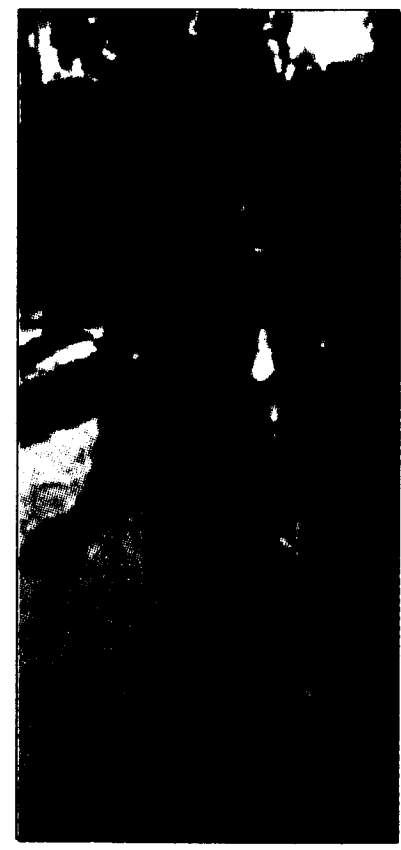
The hallmarks include quality, student-centeredness, engagement, teamwork, focus, technologically advanced, inspiring environment and diversity.

"We're wanting to expand on the hallmarks so they don't stay flat on a page," said Director of University Relations, Dwayne Wright.

Along with the hallmarks, University Relations goals from the strategic plan include a new marketing plan and updating the camps website.

"The core nugget is still that University Relations is here to tell the Behrend story," said Wright.

## Inside



Badu dresses, STUDENT LIFE, Page 8

## Contents

News.....	1-3
Editorial.....	4
Humor.....	6
Student Life.....	7-8
Sports.....	9-10

## Contact Us

Newsroom:  
898-6488  
Fax:  
898-6019

E-mail:  
BehrendBeacon@aol.com

Our offices are located downstairs in the Reed Union Building.