








# NEWS

## Weather Forecast

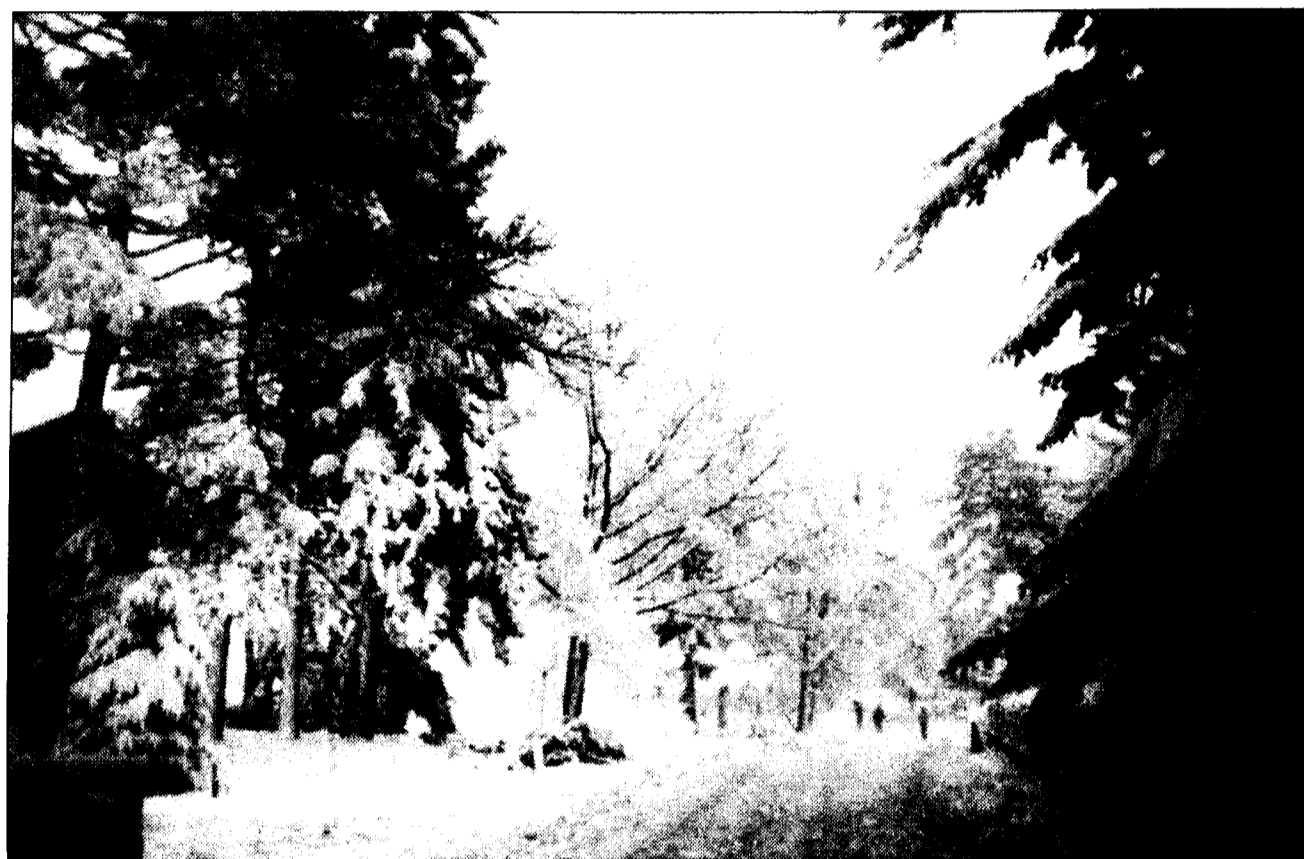
<b>Saturday</b>	<b>HIGH: 55</b>	<b>LOW: 38</b>	Mostly sunny and pleasant, clear in the evening.
			
<b>Sunday</b>	<b>HIGH: 58</b>	<b>LOW: 38</b>	Sunshine and pleasant, mostly clear in the evening.
			
<b>Monday</b>	<b>HIGH: 50</b>	<b>LOW: 33</b>	Sunshine and light clouds.
			
<b>Tuesday</b>	<b>HIGH: 52</b>	<b>LOW: 32</b>	Sunny to partly cloudy, mainly clear at night.
			
<b>Wednesday</b>	<b>HIGH: 55</b>	<b>LOW: 40</b>	Clouds with a shower possible, partly cloudy in the evening.
			
<b>Thursday</b>	<b>HIGH: 56</b>	<b>LOW: 42</b>	Mostly sunny during the day to partly cloudy at night.
			
<b>Friday</b>	<b>HIGH: 59</b>	<b>LOW: 43</b>	Partly sunny during the day to partly cloudy at night.
			

## FOCAL POINTS



DANIELLE FAULKNER/BEHREND BEACON

On April 7, the Marcus Roberts Trio performed at noon in the Reed Union Building. The program was part of the Music at Noon: The Logan Wintergarden Series. The group took historical jazz selections and added a twist of improvisation to modernize the sound.



BLAIR FULFORD/BEHREND BEACON

The walkway from Studio Theatre to Reed Union Building was covered in snow Sunday. The early spring snow storm dumped more than 2 feet of snow in some parts of Erie County.

## Behrend Briefs

### Pascal Loubet to speak

The School of Humanities and Social Sciences in conjunction with the Global Fund are sponsoring freelance writer, novelist, magazine editor and multi-media artist Pascal Loubet. Loubet will hold and open forum to discuss how to turn a Penn State Erie degree in English or Communications into an exciting and successful career.

### Allegheny State Park Trip

The Outdoors Club and the Cycling Club are sponsoring a trip to Allegheny State Park Trip. The trip will consist of hiking, biking, roller blading and walking. Interested students can sign up at the RUB desk. 20 free rental bikes are available on a first come, first serve basis. Transportation will be through carpooling and students are encouraged to bring their own picnic lunch.

### Independent Student Film Festival

On April 11 at 8 p.m. in Reed 117 Screen Visions Film Club will be holding an independent film festival. Behrend students have submitted short films that will be screened for an audience of their peers. Admission is free and all students are encouraged to attend.

## Classifieds

### HELP WANTED

Addressers wanted immediately!  
No experience necessary. Work at home.  
Call 405-447-6397

*"Man's capacity for justice makes democracy possible, but man's inclination to injustice makes democracy necessary."*  
— Reinhold Niebuhr, American theologian (1892-1971)

Janet Neff Sample Center  
for Manners & Civility

**Corrections:** Last week in the article "Volunteers needed for Battle" it was printed that SGA is sponsoring the Battle of the Bands. In actuality, the LEB is sponsoring the event.

## Nittany name comes from Shoemaker

By Amanda Charney  
contributing writer

When Penn State opened in the mid 1800s, it did not have the snazzy Nittany Lion shrine and mascot that make up our institution's most noticeable icons; it had the term "Nittany" but not the symbols.

First of all, what does "Nittany," mean? The popular myth behind the meaning is that it is derived from Princess Nita-nee, a member of the Native American tribes who once lived in central Pennsylvania.

However, Princess Nita-nee was "invented" by author and publisher Henry W. Shoemaker and has no basis what-so-ever in fact. He attributed the tale to "an aged Seneca Indian named Isaac Steele." Shoemaker, a well known Pennsylvania folklorist, later admitted that both Steele and Nita-nee were "purely fictitious."

The truth behind it is that the word "Nittany" was taken from a Native American term meaning "single mountain." A number of Algonquian-speaking tribes inhabiting central

Pennsylvania applied this description to the mountain that separates Penns Valley and Nittany Valley, overlooking what is today the community of State College and Penn State's University Park campus

The first white settlers in the 1700s adopted this term, or a distortion of it, when they named that mountain, Mount Nittany or Nittany Mountain and so by the time the first students were admitted in 1859, the word "Nittany" was already in use.

The use of the Nittany Lion as a mascot began at a baseball game against Princeton in 1904. Prior to the game, the Penn State team was shown a statue of Princeton's famous Bengal tiger as an indication of the merciless treatment they could expect to encounter on the field.

With some quick wit, player Harrison D. "Joe" Mason (1907 graduate) fabricated a story about the Nittany Lion, "fiercest beast of them all," who could overcome even the tiger.

Filled with inspiration, the team defeated Princeton that day; and over the next few years, Mason's "Nittany Lion" won such widespread support

among students, alumni and fans that there was never any official vote on its adoption.

Our Nittany Lion is no more than a plain mountain lion, a creature that roamed central Pennsylvania until the 1880s. It is also called a cougar, puma or panther.

By attaching the prefix "Nittany" to this beast, Mason gave Penn State a unique symbol that no other college or university could claim. 43 people at University Park have proudly donned the Nittany Lion mascot costume from approximately 1921 to the present.

The first Nittany Lion shrine was a gift from the Class of 1940. Sculpted by Heinz Warneke, the crouching, powerful figure was carved from a large block of Indiana limestone and presented to Penn State in 1942. The University Park lion is located near the Recreation Building on the University Park campus. It is said to be the most photographed site on the campus.

Our lion currently resides near the main entrance to the Junker Center, with its final destination being located near the RED-C and the Smith Chapel.

## A World of Opportunity

### At West Corporation

Opportunities to work on West's newest program!

**Up to \$9.00\*** Per hour  
\* Includes \$.50 per hour incentive

**Night Owls Needed**  
All shifts available  
graveyards. \$1.25 per  
differential for graveyards.

**\$300 Referral Bonus**  
Ask Human Resources for more details when applying.

**Customer Service and Sales Representatives**  
At West, it's all about providing the best service and sales for our clients. Whether the project entails customer sales or customer care, we hire only the best to represent our leading clients. If you have strong people skills and enjoy new challenges, you may have what it takes to succeed at West.

**Apply online or in person!**  
[www.westemployment.com](http://www.westemployment.com)

**Office Hours:**  
Monday, 9 a.m.-6 p.m. Tuesday-Friday, 8 a.m.-5 p.m.  
2323 West 38th Street • Erie, PA 16592 • Job Line: 836-2401