

HUMOR

The people who count... will get it

Campus group celebrates 'Reverse Easter' egg sacrifice

By Cubby Scoops
(not a world class journalist)

"We're really putting some bees in the J-man's bonnet this year!" remarked Clyde Thimblethorp, president of the Penn State Behrend Inter-Varsity Molech Fellowship on the organizations celebration of "Reverse Easter" this past Sunday. Thimblethorp added "He (Jesus) can scurry straight back into history; we'll gladly take another 6000 more years of Molech's reign!"

Molech is an ancient Babylonian owl god to which many sects, including the secret Fee Masonry Society, pledge offerings every year in the interest of bringing more profit and evil in the New Year.

It is the fervent belief of the IVMF that Molech, not Jesus, is in fact 'the savior' and that Molech is the true ruler of all mankind.

The IVMF celebrates "Reverse Easter" every year on the Sunday before the Christian Easter holiday by holding rituals intended to symbolize their desire for Jesus to "go back to the future" and allow Molech to move into the religious limelight.

In an attempt to gain additional interest, the Behrend IVMF has ditched the traditional owl idols in favor of more timely symbols.

"The form Molech takes is not important; what is important is that Molech takes your heart; literally!" quipped Thimblethorp on the Behrend IVMF's adoption of the nontraditional symbology.

The "Reverse Easter" celebration began around 10 a.m. with a procession of IVMF members which originating from a gathering in McGarvey commons, wound through the Reed Parking lot and into the maw of the Wintergreen Gorge.

Each IVMF member brandished a large plastic Easter egg that stood in for the traditional 'baby in effigy' that is a customary element of all Molech events.

At the far end of the Wintergreen Bridge, a ceremonial platform was erected which, while incorporating commercialistic Easter symbols, retained the basic 'inferno chamber' which is reportedly crucial to all Molech alters. Once all the IVMF members had gathered at the foot of the alter a four hour 'Rabbit Tango' ensued, wherein all participants circled about in a bunny hop step mimicking the rights of spring.

The celebrations concluded at the climax of the 'Rabbit Tango' when each IVMF member lobbed their Easter Eggs into the "inferno chamber" to symbolize the incineration of goodwill and thoughtfulness toward others.

"Hey guys, what smells like rotten eggs?" quipped an IVMF member shortly after the incineration ritual. The event ended when each fellowship member jumped into the Wintergreen creek for a refreshing, post fire dip.

"As long as Molech is 'da man, we'll be runnin with his plan!" concluded Thimblethorp.

HVIZDAK'S PHOTO OF THE WEEK



CHRIS HVIZDAK/BEHREND BEACON

IVMF worshipers deposit their sacrificial eggs in the traditional inferno chamber as their leader, Clyde Thimblethorp looks on. The Molech alter reflects the IVMF's adoption of contemporary commercialized symbols of "forward" Easter.

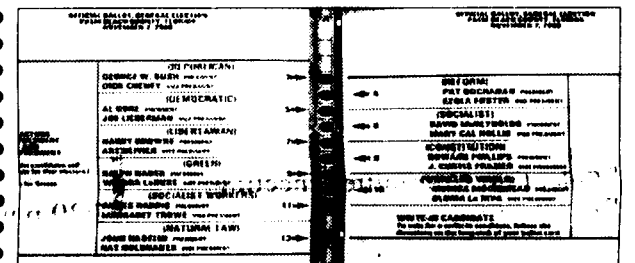
Deep thoughts: Food

By Vera Michiru
contributing writer



We didn't have real chocolate when I was growing up. We didn't have peanut butter either. The worst part was that we didn't have Fruit by the Foot. We had Fruit Leather, which was leather that was flavored fruit. Real leather, like dried cowhide leather. I mean take a coat and put apple butter on it; that's what we had. No sugar either. The only thing I could really enjoy was butter. I'd eat sticks of butter like they were candy bars. My friends would steal sugar packets from restaurants and slip it to me during lunch.

Extra Vote!



Clip this coupon and return it to the RUB desk to receive one extra vote in the upcoming SGA election.
Make your opinion count... twice!

SGA Decision 2005: You choose, you lose

SGA candidate threatens to take over Beacon

Wednesday's SGA meeting was canceled to hold a debate to decide who would "lead" next year's SGA to cancel a meeting to hold a "debate." One candidate, when asked what he would do if not elected, said that he was considering applying for the position of editor in chief of the Behrend Beacon. The Beacon is prepared to mutiny should this occur. His threats were not taken lightly and were reported to Police and Safety on principle. The Beacon plans to appeal the decision all the way to the SGA "Supreme Court." This will be the "court's" first "case" since the controversial 2003 decision in *The People vs. SGA* regarding who ate the last piece of pizza at SGA's Pizza Committee meeting. The result of this case was that only pepperoni and plain pizza are served at event so that no one would care if they missed out on pizza. Beacon "lawyer" Dan Snedden fears that should the Beacon lose the case, the same would happen to the Beacon allowing for only two varieties of news: sports and administrative PR.

Stick removed from SGA candidate's rectum

Earlier today one of the SGA presidential candidates was rushed to Health and Wellness for an emergency sticheckotomy. Doctors found a mile long stick rammed so far up said candidate's rectum that it was applying pressure to the personality lobe of the brain. According to one doctor, the stick "was not just causing extreme tension and a constant, constipated look, but also preventing the candidate from displaying any personality." Experts decided that the stick came from a Great-Rotund Redwood Tree, and the candidate will be in the hospital for several weeks awaiting splinter removal.

Candidate criticized for conflict with running mate

A topic of major controversy at the SGA debates was over the deep-rooted conflicts between a candidate and the candidate's running mate. One of the more heated debates occurred when another candidate said "I heard from my buddy's roommate, who heard from his cousin, who heard from a professor, who heard from his son in Uzbekistan, that you [the aforementioned candidate] and your running mate disagreed on every issue." This incited a heated debate between said candidate and running mate over whether or not the tattoo on the running-mate's back said "Dude" or "Sweet." This decayed into an argument over who would get the last cookie, but order was quickly restored when Police and Safety intervened. It was later reported that the candidate came to blows with the running mate over the location of the candidate's car. The conflict was solved when it was discovered when the candidate had no car.

Controversy arises over 'educational expedition'

Among the subjects discussed at the debates was the notion of increasing Behrend's involvement with the local colleges. One candidate claimed to have made several trips to the various surrounding colleges, on "fact-finding missions." In an attempt to bring down their colleagues, one of the other tickets hired a private investigator to "keep tabs" on said candidate. The investigator disguised himself as the candidate's running mate and tagged along on the outing. Instead of traveling to Mercyhurst to ask about a pool, the candidate in fact went to several adult entertainment retailers in the one thousand block of State Street. The candidate responded to this by saying his purpose for traveling there was to establish an agreement by which students could get 10 percent discounts for showing their student ID.

VP candidates find debate educational, confusing

SGA vice-presidential candidates learned at Wednesday's debate that the 'S' in SGA does in fact, stand for 'student.' One, overly-energetic, boarder-line spastic candidate thought it meant "super." Another, laid back, frequently quieted, vice-presidential candidate thought, somewhat accurately, the 'S' stood for "superfluous." The remaining candidate was not revealed to be a candidate until five minutes before the debate ended and no one had ever seen the individual prior to the debate. The vice-presidential candidates praised the Beacon for its educational efforts in informing them of their hefty stipends. Two of the candidates saw the very future of Behrend in the balance, acknowledging that each year Behrend loses hundreds of students to the University Park campus (or Penn State as anyone outside of a backwater, third-rate, satellite campus calls it), the third candidate was distracted by a shiny object and the promise of cookies after the debate.

Third table for candidates cost \$15,000 from SAF

Due to the addition of a third ticket in the SGA Presidential race, a third table was needed for them to sit at during the debates. SGA realized this was problematic when they discovered they had only two tables, as the rest were destroyed to build McGarvey's new dance floor. Student Irving Washington, chair of the Ad Hoc Committee submitted an SAF proposal for a \$25 table from K-Mart. However, that proposal was swiftly shot down as it was a far too reasonable use of student money and \$25 was deemed too little money to be "reallocated" to the "New Car/Backyard Swimming Pool Fund." The proposal was then resubmitted by a staff member who ordered a new table from www.overpricedtables.com/specialized/10kandup/ripoff.html a site that popped up while said staff member was browsing for more ways to waste students' money. The table originally cost \$15,000, but the school's tax-exemption brought it down to \$5.25. The rest of the money went to shipping and handling, insurance for the table, healthcare for students using the table, a customer loyalty package on future tables and other "administrative costs." Again biting the hand that feeds them, SGA and the administration blamed the additional costs on University Park. When contacted, representatives from University Park said "what happened to the \$5,000 we allocated for Behrend's administration to purchase tables at the beginning of the semester?"

Radio station subject of controversy, apathy

A much mentioned subject of the debates was the idea of bringing a new radio station to Behrend. One candidate suggested getting rid of Behrend's AM station and starting a new FM station, being the 27th FM station competing for air-space in Erie, believing that it would be an effective way to spread SGA anti-Penn State propaganda. Another candidate suggested installing XM radio throughout campus thus spending more money on irrelevant projects. The candidates, however, came to a resolution most suited to Behrend: Behrend Student Radio, or BS Radio.