

STUDENT LIFE

Clubs rush to find members

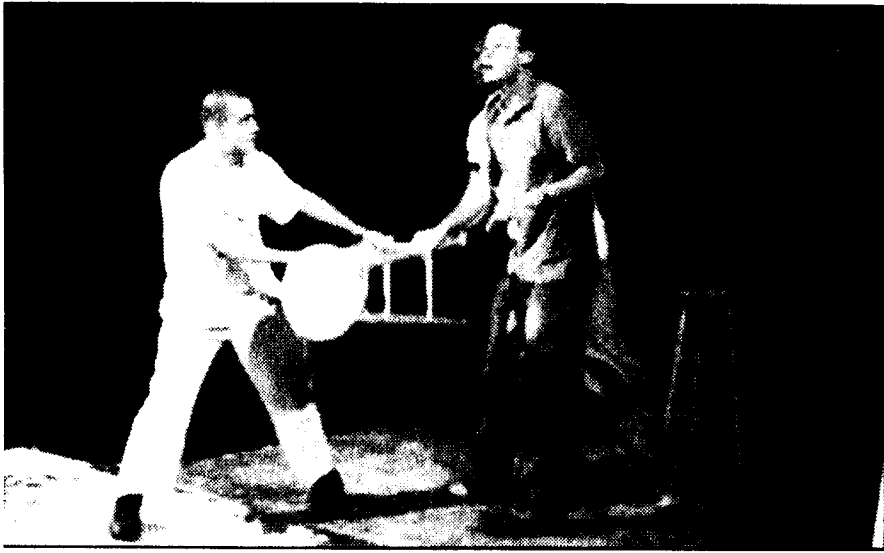


PHOTO BY DANIELLE L. FAULKNER / BEHREND BEACON

Jerry Pohl, COMMU 03; Steve O'Donnel, HIST 07; and John Stranahan, COMMU 07 participate in the Matchbox Players' Improv Night, Thursday. Matchbox Players is one of 61 clubs looking for members at Club Rush.

By Lori DeFabio
student life editor

On Thursday, September 9 from 2:00 p.m. to 6:00 p.m., the Reed front lawn will be filled with tables and activities as part of Club Rush. Club Rush is a new idea this year sponsored by Student Activities, SGA, SAE, and received much help from two Behrend students, Orientation Director, Emily Gabrys, and SGA Vice President, Justin Curry.

Club Rush will provide the opportunity for students to make a connection with a club or activity that they may like to join. According to Chris Fox, Coordinator of Student Organizations and Program Development, many students are unaware of all the organizations Behrend offers. "I hear students say, 'there's nothing to do on campus,' so Club Rush is a fun way to showcase many of the organizations." Club Rush is mainly targeted new students and commuters to help find activities in which to participate. "Many commuter students are not as involved as those living in the residence halls," states Chris Fox, "so we want to target them to make those students be a more involved part of the community."

This year Club Rush is tied in with orientation even though it is intended for all students to attend. Every fall semester in the past there was an "Activities Fair" for students to attend, but this year "we wanted

to re-vamp the Activities Fair and got the idea from New Kensington campus," said Chris Fox.

Sixty-one organizations will be participating in Club Rush and will cover areas of academics, arts, interfraternity, multi-cultural, panhellenic, recreations, service and honors, and student life.

Tables will be arranged in Reed front lawn with information from each organization participating. The information tables will let students be aware of the types of organizations that are currently active at Penn State Behrend. Along with the informational tables, there will also be activities including a palm reader, a DJ, sumo wrestling, a climbing wall, and a caricaturist. Free carnival type food such as popcorn, cotton candy, and soft pretzels will also be offered.

Between 5:30 and 6:00, a Club Rush Prize Drawing will be held. New students could earn tickets to place in the Prize Drawing drop box by attending any of the Survivor Series workshops. Tickets will also be available for other students at Club Rush and need to be dropped off by 5:15 p.m. to be entered in the drawings. Numerous prize packages have been donated and will be displayed all day at Club Rush.

Club Rush will end on the Reed front lawn at 6:00 p.m. but will continue in the Reed Wintergarden with a performance by acoustic guitarist, Eric Hutchinson, sponsored by the Lion Entertainment Board, and an Open Mic at 8:00 P.m.

My 'Fair' Lady



FOCUS FEATURES

Reese Witherspoon stars in Mira Nair's "Vanity Fair."

By Chris Hewitt
Knight Ridder Newspapers

The term "B.S." could have been invented for Becky Sharp.

Sharp is the duplicitous heroine of William Makepeace Thackeray's "Vanity Fair" and of the not-entirely-successful Reese Witherspoon movie based on it. We meet her as an impoverished child, but things start to look up when Witherspoon slips into Becky's crinolines. The adult Becky is a sharp cookie who learns early that the money Jane Austen's heroines seek will not make her happy and that the secret of life is to figure out what will.

"Vanity Fair" is set 200 years ago, at about the same time as the Austen novels, but, instead of the money/love axis that obsessed Austen, the movie is more interested in where love bumps into the British social strata that cannot be budged, no matter how much money one has. Throughout her life, Becky has chances at money and at love, (sometimes with the same guy, even) but what keeps her dissatisfied is her conviction that acceptance can buy happiness.

Mira Nair, who also directed "Monsoon

Wedding," has trouble juggling all the characters here, but she brings to "Vanity Fair" some of her previous film's zest for life.

This movie doesn't have any of the Merchant/Ivory, oh-no-I-couldn't-possibly-vibe you might expect. For instance, whereas we're aware that sex may be occurring off-camera in those movies, it's front and center here.

Whereas there have been social climbers in those films, this one's heroine is a social mountain climber who uses London as her base camp. And, whereas the peerless Eileen Atkins pops up in several of these period films, this is the first one where her bare butt does.

Even the palette is more vivid. Austen films are usually stuck in the Laura Ashley, puce/pale green family of colors, as if the characters think wearing purple is tantamount to flashing the Super Bowl. But this one has vivid crimsons and scarlets, even in the hair (if the cast of "A Room With a View" got a load of Becky's brazenly red updo, they'd snub her into a convent).

I liked many things about "Vanity Fair": The unique look. The quippy script ("Keep your toadying until I'm near a fire. You can suck up all you wish when I'm warm," says Atkins, whose character is like a tornado of snap judgments). And the dynamite supporting cast, which also includes Jim Broadbent and Romola Garai. Still, I'm afraid the movie is not much more than fair.

Nair and Witherspoon never get a handle on the title character, one of those characters you like despite the awful things she does. She should veer from extremes of bad to good but, instead, the movie has her in a wishy-washy middle ground that encourages us to feel wishy-washy about her, too. Witherspoon may have played too many manipulators (in "Election," "Freeway" and the "Legally Blonde" movies) to surprise us anymore, so her character never engages our sympathies the way the people do in the Emma Thompson film "Sense and Sensibility," for instance.

These flaws are understandable; Sharp is a tricky character. But, if you haven't figured her out, why bother to make a movie about her?

ORGANIZATIONS PARTICIPATING

ACCOUNTING CLUB - Helps promote Penn State Erie's accounting program.

ALPHA PHI OMEGA - A co-ed national service fraternity based on Scouting principles and is open to all students.

ALPHA SIGMA ALPHA - A national service and social sorority that holds fund-raiser throughout the year to raise money for their national philanthropy project.

ALPHA SIGMA TAU - A national service and social sorority that commits their time to Adopt-A-Highway.

ASIAN STUDENT ORGANIZATION - A support group for Asian students on campus that strives to ensure pride and self-awareness.

ASSOCIATION FOR WOMEN IN COMMUNICATION - Professional and international organization that champions advancement of women across all communication disciplines.

ASSOCIATION OF BLACK COLLEGIANS - Promotes multiculturalism and ethnic awareness on campus.

AUTO CLUB - Brings together students who have an interest in automobiles and/or a future in the automotive industry.

BEACON - Penn State Erie's weekly student newspaper.

BETA BETA BETA - An honor society recognizing students studying biology.

BIOLOGY CLUB - Seeks to broaden members' knowledge of biology and related fields.

CHEMISTRY CLUB - Helps its members and the campus community to understand the field of chemistry.

COMPUTER SCIENCE ORGANIZATION

DELTA CHI - An international social fraternity whose members are involved in campus and community services.

DELTA SIGMA PI - An international business fraternity which sponsors social and athletic activities, events, and community service.

EQUESTRIAN CLUB - Provides a competitive framework as well as a professional and supportive environment for riders from all backgrounds.

HOCKEY CLUB - Members of the WPCA Hockey League compete against other college hockey clubs.

HOMECOMING COMMITTEE - Brings together the student body, faculty, staff and alumni through the planning and implementation of Basketball Homecoming activities.

INSTITUTE OF E & E ENGINEERS - Provides members with information about various aspects of electrical engineering and electronics.

INSTRUMENTAL MUSIC

INTERFRATERNITY COUNCIL - The governing body on campus for social fraternities.

INTERNATIONAL STUDENT ORGANIZATION - Promotes cultural awareness with foreign students sharing cultural experiences, differences, and backgrounds.

INTER-VARSITY CHRISTIAN FELLOWSHIP - Helps students grow in their relationship with Jesus Christ through fellowship, evangelism, discipleship, and missions.

IRISH AMERICAN SOCIETY - An organization that strives to educate students, faculty, staff, and the community about the culture and history of the Irish people and Ireland.

JOINT RESIDENCE COUNCIL - Relates the views of students living in residence halls and apartments to the college administration.

KAPPA DELTA RHO - A fraternity that recognizes the need for scholastic achievement and community service.

LACROSSE CLUB - Offers Behrend students the opportunity to play recreational lacrosse.

LAMBDA SIGMA SOCIETY - A national honor society for sophomores who are elected on the basis of outstanding academic and leadership accomplishments.

LAWRENCE HALL COUNCIL - Relates the views of students living in Lawrence Hall to JRC and sponsors a variety of events.

LEADERSHIP UNLIMITED

LION AMBASSADORS - Helps promote Penn State Erie spirit among students, alumni, and friends of the University.

LION ENTERTAINMENT BOARD - Plans and implements events that serve the cultural, educational, recreational, and social interests of the Penn State Behrend community.

MANAGEMENT INFORMATION SYSTEMS CLUB - Provides a solid foundation for School of Business students beyond the classroom.

MARKETING CLUB - Provides students with the opportunity to display their creative marketing attributes.

MARTIAL ARTS CLUB - Promotes skill development in the art of self-defense.

MATCHBOX PLAYERS - Provides experience in various phases of theatrical production.

MULTI-CULTURAL COUNCIL - Promotes awareness, understanding, and appreciation of historically underrepresented groups.

NATIONAL SOCIETY OF BLACK ENGINEERS - Provides a supportive environment for African-American students through programs and fellowship.

NEWMAN ASSOCIATION - A Catholic-based organization that seeks to bring students closer together and to God through learning, prayer, fellowship, and service.

NIAGARA HALL COUNCIL - Relates the views of students living in Niagara Hall to JRC and sponsors a variety of programs and events.

ORGANIZATION OF AFRICAN STUDENTS - Introduces and promotes the diverse African culture.

ORGANIZATION OF LATIN AMERICAN STUDENTS - Helps coordinate the annual Friday Fiesta dance at Bruno's each year.

OUTDOORS CLUB - Organizes outings and various recreational activities.

PANHellenic COUNCIL - The governing body for social sororities.

PERRY HALL COUNCIL - Relates the views of students living in Perry Hall to JRC.

PSI CHI - A national honor society for psychology majors.

PSYCHOLOGY CLUB - Sponsors events and forums that relate to psychology.

RETURNING ADULT STUDENT ORGANIZATION - Promotes the concerns of returning adult students and provides friendship and support for adult students and their families.

ROTC CLUB - Helps familiarize students with the Army ROTC program at Penn State Behrend.

SCREEN VISIONS FILM CLUB - Organizes various film events dealing with fringe, independent, and classic films.

SIGMA TAU GAMMA - A national service and social fraternity that sponsors the annual Sand Volleyball Tournament during Orientation Week.

SIGNING CLUB - Works toward educating the Behrend community on how to better communicate and socialize with both deaf and hard of hearing community members.

SOCIETY OF UNDERGRADUATE ECONOMISTS - An academic organization that furthers the understanding of the business community.

SOCIETY OF WOMEN ENGINEERS - Informs the community of engineering principles and the educational opportunities available to students.

STAIR - The Office of Student Activities is promoting the Student Advisor Involvement Retreat planned for October 15-16, 2004 at Peek 'n Peak Resort.

SGA / GOVERNMENTAL AFFAIRS - The governing body of the student population.

THETA PHI ALPHA - A national service and social sorority that participates in fund-raisers and philanthropic work.

TRIGON - An organization that strives to make homosexuality and bisexuality more acceptable.

VOCAL MUSIC

WOMEN TODAY - A support group dedicated to the education, growth, and awareness concerning the issues of women.