

Question of the Week

by Dana Vaccaro, features editor

## Who do you want as a valentine and why?



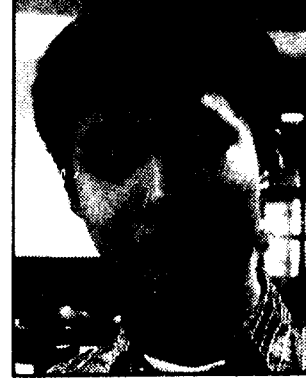
"Ben Affleck because he is HOT!"  
Claudia Caracci  
ELISH, 03



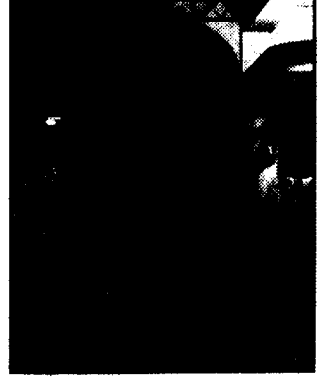
"Joe Zimmer because I like his car."  
Lauren Kich  
MRKTG, 06



"Jessica Simpson because she's hot and blond and has a nice bottom."  
Casey Bott  
MRKTG, 06



"Shakira. She's smart, her songs are not just dumb flares any other pop singer does and she has beautiful eyes."  
Lon Wuan  
BIO, 02



"The cute reporter across from me who just stopped by because she has a sparkle in her eye."  
Kevin Gillespie  
BLASC, 07

Have a suggestion for Question of the Week? Email your question to us at: behrcoll2@aol.com.

## LEB seeks new executives

*Nine students needed to fill entertainment board executive positions*

by Brad Stewart  
staff writer

At the end of the spring semester, executive board chairs will be open for students interested in joining the Lion Entertainment Board. Applications are available in the Office of Student Activities. They are due March 5. Meetings are every Wednesday at 8 p.m. in Reed114.

The LEB is responsible for any band, comedian or movie that plays at Behrend like "School of Rock" or comedian Tim Young. It is a student-run organization, composed of an executive board and respective committees, with a total of about 35 members. Members decide on the programs and provide the majority of the entertainment that takes place on campus.

"Students have total control," said adviser Michelle Barbich, coordinator of Student Organizations and Program Development, "They decide through their committees who they're going to bring."

The group is lead by a nine-member executive board made up of an executive director, assistant executive director, administrative assistant, financial director, web master, night club chair, comedy chair, publicity chair and film chair. Each board member has a specific purpose. The board's goal — "Get as much entertainment on campus as

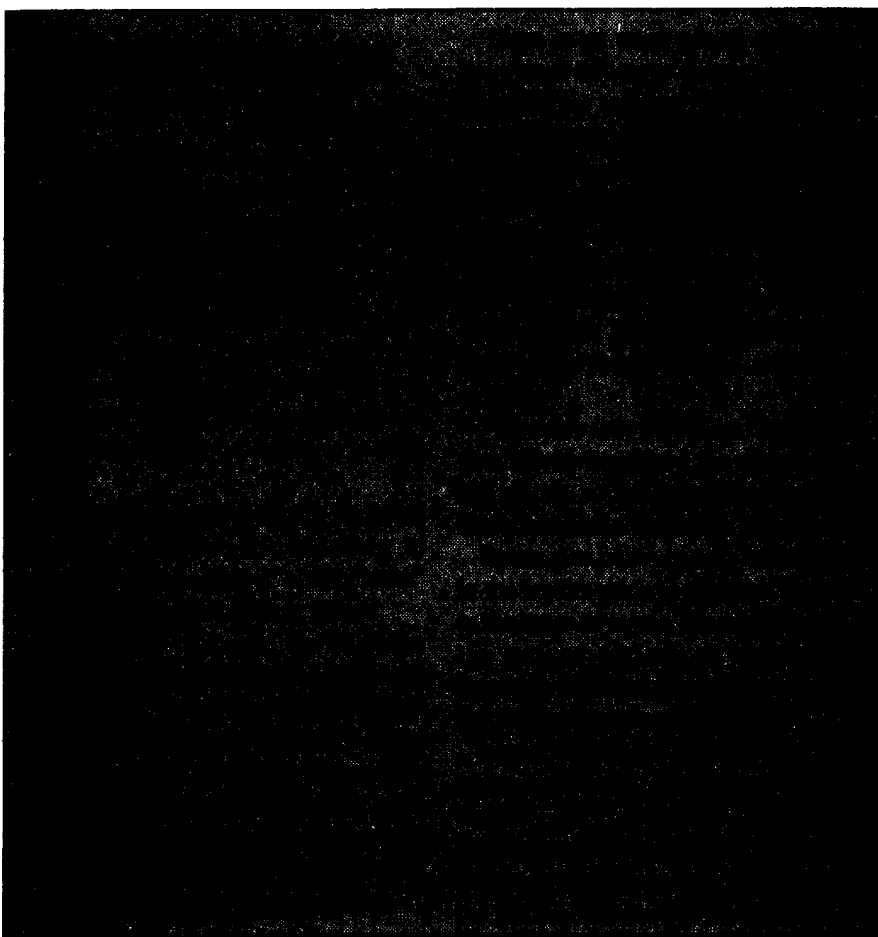
possible with the funds available," said Executive Director Dave Daquente.

Being on the LEB can be a lot of work. Some duties include attending conferences, negotiating prices, collaborating with local venues, signing contracts, cutting checks, making hotel arrangements, arranging transportation, setting up a stage and sound system, advertising and finally, attracting a crowd.

It is not without rewards, however. Each board member receives a stipend, as well as in Michelle Barbich's opinion, "a great leadership opportunity."

The LEB's missions statement is "We, the principle programming body of the Behrend College of the Pennsylvania State University, shall serve to provide programs which serve the cultural, social interest of the Behrend College and its community, work with the Office of Student Activities to procure the above, and be responsible for the provision of activities, programs, and services which are of an all-college nature."

In the year 2004, the LEB has a budget of \$65,000. The money was requested from the Student Activity Fee and will be used to bring entertainers such as Juliana Theory and comedians like Michelle Rouch. Upcoming events and special programs as well as information on the LEB can be found on its Web site at [www.clubs.psu.edu/bd/leb](http://www.clubs.psu.edu/bd/leb).





Large 1-Topping Pizza



Single Order of Breadsticks

Pizza & \*Stix Student Combo

# \$6.99

with coupon

Reg. \$14.98 - SAVE '8

4402 Buffalo Road, Erie • 899-2313  
2007 E. 38<sup>th</sup> Street, Erie • 825-7872

Dine-in, Carryout & Delivery

**Large 1-Topping Pizza and a Single Order of Breadsticks**

# \$6.99



Offer available on Pan and Thin 'n Crispy crust. Offer available on dine-in, carryout, or delivery orders. Up to 4 orders per person. \$1.00 delivery charge may apply. Limited time offer valid only with current student ID.

**Large 1-Topping Pizza and a Single Order of Breadsticks**

# \$6.99



Offer available on Pan and Thin 'n Crispy crust. Offer available on dine-in, carryout, or delivery orders. Up to 4 orders per person. \$1.00 delivery charge may apply. Limited time offer valid only with current student ID.

**Large 1-Topping Pizza and a Single Order of Breadsticks**

# \$6.99



Offer available on Pan and Thin 'n Crispy crust. Offer available on dine-in, carryout, or delivery orders. Up to 4 orders per person. \$1.00 delivery charge may apply. Limited time offer valid only with current student ID.

**Large 1-Topping Pizza and a Single Order of Breadsticks**

# \$6.99



Offer available on Pan and Thin 'n Crispy crust. Offer available on dine-in, carryout, or delivery orders. Up to 4 orders per person. \$1.00 delivery charge may apply. Limited time offer valid only with current student ID.