

ΑΣΑ: 'Every member makes a difference'

by Courtney Straub
news editor

The sisters of Alpha Sigma Alpha are starting out the 2003 fall semester with a bang. Between philanthropic projects, new members, and sister activities they are bringing sisterhood to a whole new level.

On Sept. 21, 2003 the sisters volunteered their time at the Juvenile Diabetes Research Foundation Walk (JDRF). To make the walk flow smoothly, the sisters helped greet the walkers and direct them to registration tables. The sisters also helped hand out t-shirts.

"The JDRF Walk was an enjoyable time to help researchers find a cure for a childhood disease," said Amanda Malone, active sister of Alpha Sigma Alpha, "I had a lot of fun."

On Oct. 4, 2003, the sisters of Alpha Sigma Alpha will participate in Parents and Families Weekend. Along with selling Krispy Kreme doughnuts they will be selling November Care Packages. The packages include a coffee mug, school necessities, playing cards, and assorted candies.

"I'm really excited about selling these care packages," said Seraina Naef, active sister of Alpha Sigma Alpha. "The students are really going to enjoy them."

When driving down Interstate 90 on Oct. 18, look for the Alpha Sigma Alpha sisters. Twice a year they clean up a mile of the highway as part of their Adopt-a-Highway project.

"It is such a pleasure to be involved with girls who care so passionately for not only the ideals of Alpha Sigma Alpha, but for helping the community as a whole," said Dee Nowacinski,

president of Alpha Sigma Alpha.

Along with their philanthropic work, the sisters have been spending their free time getting to know one another. Recently Mindy Schauers, active sister of Alpha Sigma Alpha, opened her home to the other sisters for a night of bonding and fun. The brothers of Sigma Tau Gamma also went to Schauers' for the night.

"Everyone had a great time," said Naef.

Somehow in their busy schedules, the sisters of Alpha Sigma Alpha also find time to be involved in other activities on campus. A few are Resident Assistants, others are involved in Student Government Association, and many others are involved in the numerous clubs and organizations on campus.

"The sisters of Alpha Sigma Alpha are very fortunate in the fact that we have had extremely wonderful hardworking sisters in the past who have set a high precedent for our current sisters to live up to," said Nowacinski.

Rush events went well for the sisters this semester. At the present time, four girls are completing the new member process to become a sister of Alpha Sigma Alpha. They are Bora Kim, Kari Koller, Staci Mosier, and Melanie Snyder. The new member period will last for the next eight weeks.

Not only is Alpha Sigma Alpha gaining new members, they still have many of their alumni around to help. With everyone being involved, the sisters are looking forward to a great semester.

"Rest assured the sisters of Alpha Sigma Alpha are extremely dedicated and will continue to raise the bar for quality within the Greek community," said Nowacinski.

ΑΣΤ teams up with SafeNet to raise domestic violence awareness

by Scott Soltis
assistant managing editor

October marks the 22 anniversary of Domestic Violence Awareness Month. To kick off the month a day early, the sisters of Alpha Sigma Tau in conjunction with SafeNet recently held the clothesline project.

The project consisted of t-shirts with various facts about domestic violence written on them hanging on a clothesline outside of Bruno's on Tuesday. The project will be traveling from college to college in the area to spread awareness about domestic violence.

The connection between AST and SafeNet was forged by sister Erin Dillaman, who interned for the organization. SafeNet is an Erie group that was founded over 25 years ago to help victims of domestic abuse. SafeNet is always striving to educate the community about the dangers of domestic violence.

"The most important thing is that domestic violence is something people like to hide and it really needs to be brought to the forefront for people to be educated," said Dillaman.

The interesting set-up of the clothesline helped to lure in students to learn more about the problem.

"The turnout was fantastic and we received many



Behrend students stand in front of the t-shirt line constructed by the sisters of Alpha Sigma Tau to help raise awareness of domestic violence.

acknowledgements from the students about the setup," said AST President Diane Smigielski.

Erie County, as well as the Commonwealth, is facing several challenges to alleviate the problem of domestic violence. According to the SafeNet web site, "in Erie County, three full-time employees work in the Protection from Abuse Office because of the number of filings. The equivalent of two Erie County judges and their staffs work full-time on protection from abuse related issues."

Additionally, the site reports that "police reports and newspaper accounts show that a woman or child dies every three

days in Pennsylvania from domestic abuse."

With statistics like these it is crucial that the issue be brought out of the shadows.

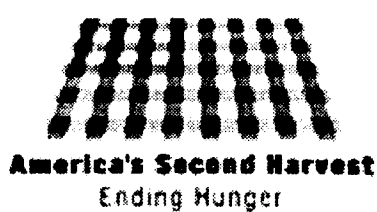
"Sometimes people keep domestic violence a secret not realizing that there are others out there with the same issues and fears," said Smigielski.

Programs such as the clothesline project aim to achieve such a goal. Smigielski expressed the importance of the event. "It was very important for SafeNet to be on campus to better educate men and women of the dangers of domestic violence and to show people that they have a place to turn to and have a safe place to get help."

PHOTO BY COURTNEY STRAUB / THE BEHREND BEACON

Support the Tau Kappa Epsilon Barrel Roll!

All proceeds from the 24-hour roll benefit the Second Harvest Food Bank.



Together, TKE and the Behrend community can make a difference!

Know your ABΓ's

A ALPHA (AL-fuh)	K KAPPA (KAP-uh)	T TAU (TAU)
B BETA (BAY-tuh)	Λ LAMBDA (LAM-duh)	Υ UPSILON (OOP-si-LON)
Γ GAMMA (GAM-uh)	M MU (MYOO)	Φ PHI (FEE)
Δ DELTA (DEL-tuh)	N NU (NOO)	Χ CHI (K-EYE)
E EPSILON (EP-sil-on)	Ξ XI (KS-EYE)	Ψ PSI (SIGH)
Z ZETA (ZAY-tuh)	O OMICRON (OM-i-KRON)	Ω OMEGA (oh-MAY-guh)
H ETA (AY-tuh)	Π PI (PIE)	
Θ THETA (THAY-tuh)	P RHO (ROW)	
I IOTA (eye-OH-tuh)	Σ SIGMA (SIG-muh)	

Know your Behrend Greeks

ΑΣΑ	ΚΑΡ	ΣΤΓ
ΑΣΤ	ΔΧ	ΔΣΠ
ΘΦΑ	ΒΒΒ	ΨΧ
TKE	ΛΣ	ΑΦΩ
ZBT	ΟΔΚ	ΑΛΣ

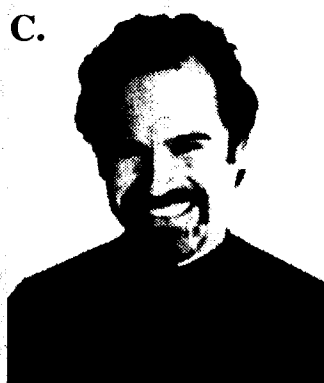
What Greek organizations do these celebrities belong to?



Ashton Kutcher,
Actor



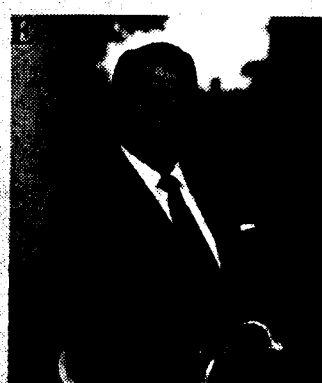
Pamela Anderson,
Actress



Dennis Miller,
Actor/Comedian



Mike Wallace,
60 Minutes



Ronald Reagan,
President

- ANSWERS:**
- A. Delta Chi
 - B. Alpha Sigma
 - C. Sigma Tau
 - D. Zeta Beta Tau
 - E. Tau Kappa Epsilon