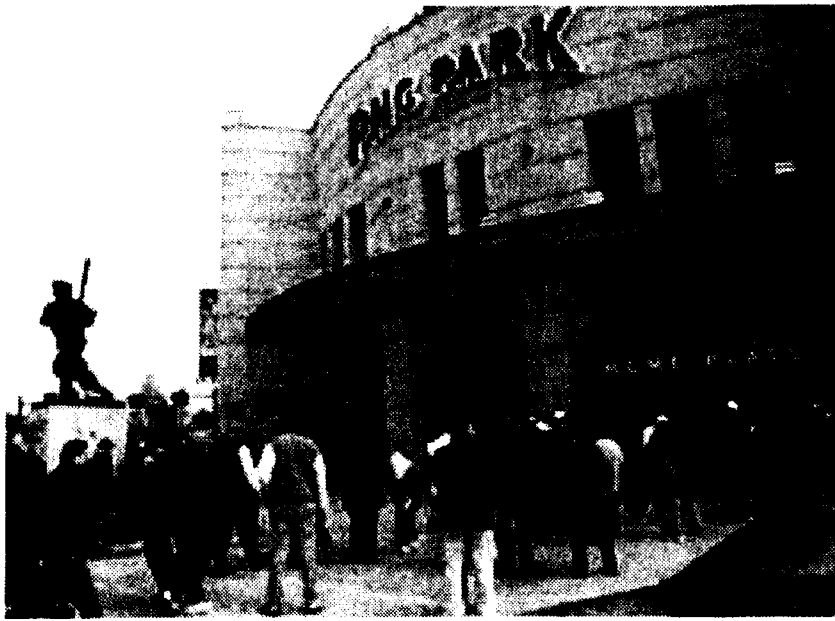


ERIE VS. PITTSBURGH



a feature by staff writers Jenna Dominick, Alyssa Peconi, & Amy Sabo

layout by Rob Wynne



by Jenna Dominick
staff writer

Erie and Pittsburgh, Pennsylvania. Two cities, both in the western part of the same state, but just how similar are they, or how different? Looking at these two cities, there are many similarities and differences. Let's take a look at some key aspects of what each has to offer.

One similarity between the two cities is the large amount of water each is known for. In Erie, Lake Erie is one of the Great Lakes of the nation. In Pittsburgh there are three rivers; the Monongahela and the Allegheny meet to form the Ohio River at Point State Park. Also, many covered bridges are found in and around both cities.

For sports fans, Pittsburgh offers a wide array of various activities. The Penguins play professional hockey in Mellon Arena, and the Steelers play football in the new, state-of-the-art Heinz Field. PNC Park was built recently for the Pittsburgh Pirates baseball team. The Riverhounds are a professional outdoor soccer team, whose home is in the Burgh, and plans for a new soccer stadium are in the works. Pittsburgh area college sports are also big.

Erie features the Otter's hockey team. Also, the SeaWolves are a Class AA baseball team which plays at Jerry Uht Park.

Comparing eateries around the towns, both have standard chain restaurants such as Max and Erma's, McDonald's, and Damon's.

However, there is not a Fazoli's or Smoky Bones to be found in Pittsburgh as they are in Erie. Pittsburgh can boast a new Hard Rock Café, and also the

infamous Primanti Brothers.

Many notable colleges and universities are found in each city. For example, Erie has Mercyhurst College and Gannon University, and of course, Penn State Behrend! Pittsburgh offers a great selection, such as Carnegie Mellon University, Carlow College, and Chatham College.

They are all located in the heart of Pittsburgh. Duquesne University and the University of Pittsburgh, as well as LaRoche and Point Park College are also in the Steel City.

There is a plethora of attractions, no matter which city you choose. In Erie, you can go to Jr.'s for loads of laughs; the Funny Bone in Pittsburgh provides a relaxed atmosphere and a stream of comedians. You can catch the Erie Philharmonic or a play at the Roadhouse Theatre for Contemporary Arts in Erie, or enjoy the Pittsburgh Symphony Orchestra or musical or ballet at the Benedum or Heinz Hall.

Family First Sports Park provides adventurous activities in Erie, and so does Sports Works on the North Side of Pittsburgh. A new indoor water park is opening soon in Erie, and you can bet on your lucky horse at the Erie Downs. Idewild Park and Sandcastle will get you soaked with water and fun around Pittsburgh, and the Meadowlands offer various games and races.

As far as the nightlife is concerned, Pittsburgh offers more clubs such as Laga, Metropol, and Rock Jungle. Erie also asserts The Metro as the hopping night spot. Both cities also have a multitude of bars.

Both cities offer zoos, museums, and historical landmarks.

Erie, however, supplies a lighthouse. The Erie Land Light entered service in

1818, overlooking the harbor of Erie.

Many changes and renovations have been made since. Also, Erie claims the best sunsets.

A Sunset camera takes pictures every 15 seconds of Erie's bay, and posts them on the web at GoErie.com. Pittsburgh offers the Duquesne Incline that travels up to Mount Washington and provides an excellent view of the Pittsburgh skyline. There is also Kennywood Park, a National Historic Landmark amusement park with classic rides and new thrills.

Movie theaters are sparse in Erie, with Tinseltown being the main attraction. Around Pittsburgh, there are at least 20 theaters in the surrounding area. Also, there are five or six malls in the Pittsburgh area, while Erie only has one, Millcreek Mall.

This difference in options may be due to sizes of each city. According to the 2000 census, in the cities alone, there are 350,363 people in Pittsburgh, while only 103,717 dwell in Erie.

The climates are similar, though. In Pittsburgh, the average high temperature is 82.5, and in Erie it is 76.4. The average lows are 20.8, and 20.0, respectively. Erie's city area is 19.3 square miles, whereas Pittsburgh's is 55.5 square miles. It is the 13th largest city in the nation, and Erie ranks as the fourth largest city in the state.

There seem to be many similarities and differences between Pittsburgh and Erie. But one thing is for sure: Both have many things to do, places to learn, sports to see, and food to eat.

Check them out for yourself!



Pittsburgh and Erie both have unique areas and attractions to entertain visitors from anywhere.

Top: Perhaps there are some Pirates playing in PNC Park. Middle: A shot of the Pittsburgh skyline. Bottom: An overhead view of Presque Isle State Park, which extends right into Lake Erie.

Pittsburgh Fast Facts

Founded: 1758
Incorporated: 1816
City Population: 350,363
Allegheny County Population: 1,336,449
Median Family Income (1997): \$38,200 (within city limits)
Unemployment Rate: 4.2%
Median Home Sale Price (1999): \$53,438
Average High Temperature (July): 82.5° F
Average Low Temperature (January): 20.8° F
Also Known As (AKA): The Burgh

Geography
Area: 55.5 Square Miles
Rank: 13th Largest City in the Nation
Elevation: 1,223 Feet
Port: Pittsburgh is the nation's largest inland port, providing access to the extensive 9,000 mile U.S. inland waterway system.

Education
Public Schools 92
Private Schools 72
Parochial Schools 58
Proprietary Schools 38
Colleges & Universities 8

Churches
Protestant 348
Roman Catholic 86
Jewish 28
Orthodox 8

Media
Major Newspapers 4
Radio Stations 32
Television Stations 8

Travel Economy
3.9 million people visit Pittsburgh annually, making travel a \$2.2 billion industry that provides more than 35,000 full-time equivalent jobs in the Pittsburgh region.

Are We There Yet?
Pittsburgh is within 500 miles of more than half the U.S. population, and the city is less than 90 minutes flying time from 20 states and Canada.

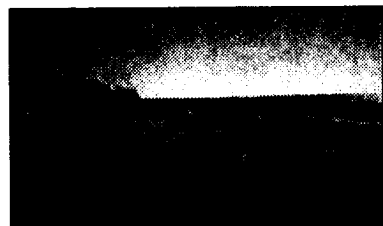
Sales Tax
Allegheny County sales tax (which includes Pittsburgh) is 7%. Clothing, groceries and specialty foods are tax-free.

Speed Limit
65 mph on major highways; 25 mph in most city neighborhoods

Information and photos courtesy of about.pittsburgh.com

10 Fun Things to do in Erie

1. Go to Waldameer Park
2. Check out Presque Isle
3. Cheer on the Otters or SeaWolves
4. Take a journey ythrough the Erie Art Museum
5. Go shopping at Millcreek Mall
6. Meander through Erie Zoo
7. Ride a sled down the big hill behind the Science Building
8. Be an adventurous at Family First Sports Park
9. Gaze at the stars at the Planetarium
10. Go wild at the Metro



Top 10 Ways to Experience Pittsburgh

1. Ride the Duquesne Incline
2. Have lunch at Primantis
3. Can't miss Point State Park
4. Spend an afternoon at one of the Carnegie Museums
5. Take in a game at one of the new sports stadiums
6. Visit the Cathedral of Learning
7. Take a historic walking tour
8. Wander through Allegheny Cemetery
9. Board the Good Ship Lollipop
10. Experience the South Side when the sun goes down



Left: A night shot of downtown Pittsburgh.

Below: Erie's lighthouse on Presque Isle.

Photos by Michael Briggs; reprinted with permission.

