

WEEKEND WEATHER OUTLOOK

SATURDAY



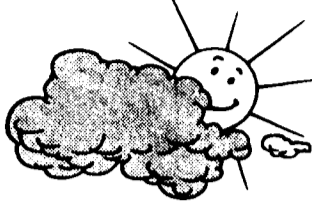
Showers Likely
High: 58°
Low: 35°

SUNDAY



Chance of Rain
High: 52°
Low: 31°

MONDAY



Partly Cloudy
High: 52°
Low: 35°

BEHREND BRIEFS

24-Hour card access begins with summer sessions

To enhance safety and security programs, Housing and Residence Life announced 24-hour card access in all University Park residence halls beginning summer session 2002. Residents will still gain access to their residence halls by using their Penn State id+ cards. They will also continue accompanying all guests at all times.

Guests can contact their host resident by using phones located outside each residence hall. Only the host resident or a staff member may open the entrance door for the guest. The halls are currently locked from 5 p.m. to 7 a.m. Sunday through Thursday and 24 hours on Friday and Saturday. The commons desks in Findlay, Pollock, Redifer, Waring and Warnock will remain open 24 hours a day to provide mail and key services.

Women talk about sex more than men

College-age women reported talking about sex and sex-related topics with their best friend more than men in a recent Penn State study by researchers who say that communication differences can lead to mismatched expectations about conversations between partners in romantic relationships.

Eva S. Lefkowitz, assistant professor of human development and family studies, presented her findings last week at a Society for Research on Adolescence meeting in New Orleans. Her co-author is Heather Petterson, a former Penn State undergraduate. The study centered on 124 women and 81 men, ages 18 to 25 at a large research university.

In a questionnaire, participants were asked to rate the frequency of communication with their best friend about specific sex-related topics. The most frequently discussed topic, by both men and women, was the physical appearance of the opposite sex.

Male self-monitoring perpetuates glass ceiling effect

Men tend to be higher self-monitors in the workplace than women, which may account in part for the "glass ceiling" effect discouraging women from upward mobility in their organizations, according to a Penn State psychologist.

"Not all men are high self-monitors, and not all women are low self-monitors. However, our findings indicate that men generally are better able than women to monitor and manage the impressions they make on others. This enables them to adapt skillfully to changing social climates in the workplace," says David V. Day, associate professor of industrial/organizational psychology.

"Because of this chameleon-like quality, they do much better on subjective performance appraisals in which the impression that a boss holds is critical to the ratings that one receives." Day co-authored a paper on the topic in the April issue of the Journal of Applied Psychology.

A glimpse into the lives of those with disabilities

Penn State faculty and staff now have the opportunity to walk "in the shoes" of someone who is disabled through an interactive Web-based training and awareness program. "In Their Shoes" utilizes graphics and sound and Web technologies to provide a glimpse of having functional limitations that substantially alter a major life activity, such as learning, seeing, hearing, or functioning socially. The program is 15 to 20 minutes in length with a pre- and post-test and a built-in evaluation component.

"This project is unique in that it is the first of its kind to provide a convenient tool designed to enlighten professionals in higher education about what our students actually experience as they live with a disability," says Joy Himmel, director of Penn State Altoona's Health and Wellness Center and developer of the project. "The content is geared to the academic community by including actual experiences and responses from students as they've maneuvered through the higher education maze."

Life on Earth being affected by global warming

A comprehensive summary has revealed, for the first time, the dramatic extent of disruptions now being experienced by Earth's species as a result of global warming.

The report compiles the results of more than 100 studies on the effects that recent climate changes have had on animals and plants throughout the world. An international team of researchers including Eric Post, assistant professor of biology at Penn State, and others at institutions in Australia, France, Germany, Texas and the United Kingdom, published the study in the March 28 edition of the journal Nature.

Web site brings youth activities a click closer

Penn State Outreach and Cooperative Extension has made locating youth activities easier than ever thanks to a new Web site at <http://www.pennstateyouth.org>. The one-stop, youth-oriented site, developed by Penn State Outreach Marketing, allows youth and their parents to browse featured programs, search interest areas, or even look up activities scheduled for specific dates. In addition, the site allows visitors to sign up for a free membership with benefits including updates on programs of interest and access to a chatroom message board. Easy links to activities of particular interest to youth are also included. Penn State offers a wide array of youth programs for ages ranging from 6 to 18. This summer, the programs will encompass offerings in sports, art, science, communications and the environment.

POLICE AND SAFETY REPORT

- 4/11/02 12:34 Officers were dispatched to S lot for a car fire.
- 4/12/02 09:15 A complainant stated that there was a distressed male in the lower level of the Nick building.
- 4/12/02 23:24 A complainant reported a receipt of harassing phone calls for the past three weeks.
- 4/15/02 02:30 A resident in Ohio Hall reported some items being stolen from his room.
- 4/15/02 11:00 Housing reported suspicious items in one of the rooms checked.
- 4/15/02 23:55 A complainant called to report that he saw someone throw items from a window onto a sidewalk.

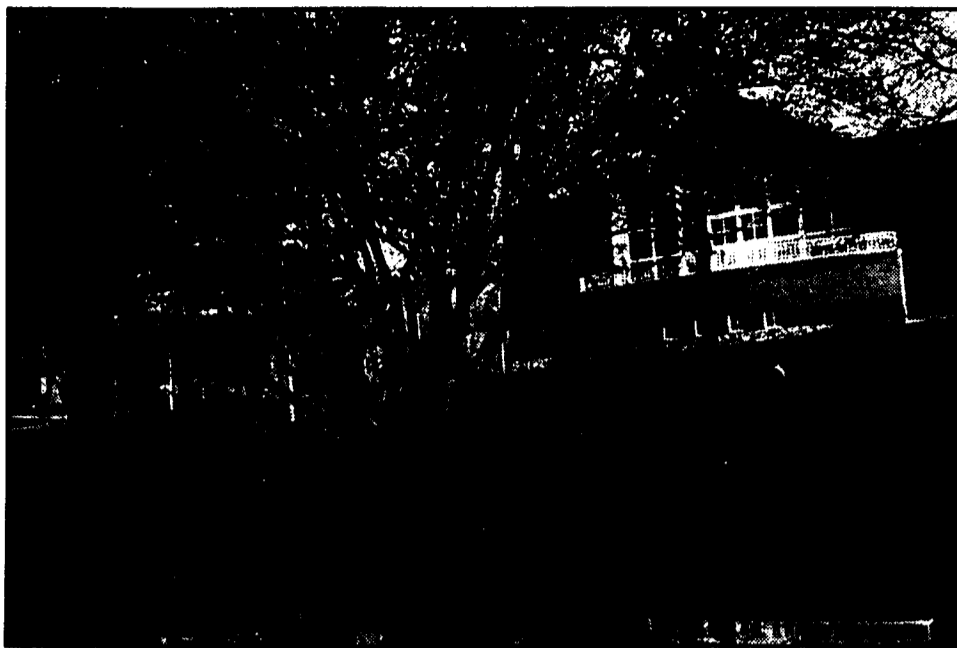
CLASSIFIEDS

College Pro Painters

Hundreds of painter positions available. No experience necessary, students welcomed and encouraged. Work close to home and with friends. Call 1-888-277-9787 or visit www.collegepro.com.

FOCAL POINT

IT'S A WILD WORLD OUT THERE!



PHOTOS BY ERIN MCCARTY / BEHREND BEACON

Students weren't the only ones out enjoying the fine weather this week. These ducks were spotted strolling along the sidewalk leading to Academic, strolling in the shade (left), and taking a dip in the luxurious mud puddle provided by last weekend's downpours. Smaller critters such as this squirrel (right) came out in droves, chasing one another across campus and chattering noisily. Watch out for falling acorns!

Final concert beautifully blends talents

by **Erinn Hansen**
calendar page editor

The Penn State Behrend Choir, Studio Singers, Concert Band, and Jazz Band showed their talents in "A Musical Collage" on Thursday in the McGarvey Commons.

The Concert Band, conducted by Dr. Gary Viebranz, rehearses twice a week, and is open to all students with experience in instrumental performance, no audition required. The band consists of two piccolos; three flutes; an oboe; 10 clarinets; a

bass clarinet; a soprano saxophone; three alto saxophones; two tenor saxophones; a baritone saxophone; four trumpets; four trombones; two euphoniums; three tubas; a bass; a piano; and four percussion instruments. The band performed a five songs, including one accompanied by the choir, and another of which was accompanied by three trumpeters from the Jazz Band.

The Behrend Jazz Ensemble, also conducted by Viebranz, is a big band in the classic jazz style striving to provide students with an enjoyable music experience. The ensemble consists of two

alto saxophones; three tenor saxophones; a baritone saxophone; five trombones; four trumpets; a piano; a guitar; a bass; and three percussion instruments. The ensemble performed a total of four songs, four of which included solos.

The Behrend College Choir, conducted by Dr. Dahlia Barnard, is made up of students from every academic major and performs both on and off campus. The choir consists of 41 students, including 16 sopranos; five

tenors; 13 altos; and seven bass. They performed three songs accompanied by Andrew Rainbow on piano.

The Behrend Studio Singers are a smaller vocal group that represents the college both on campus and regionally. The Studio Singers consist of 10 very talented students selected through audition, only eight of whom performed during the concert. These eight singers include Stephanie Bailey; Jessica Brown; Erika Dauber; Danielle Gardner; Rob Kearns; Andrea Rodriguez; Nathan Sacco; and Matt Stanton, accompanied by Andy Crawford on bass; Matthew Deacon on drums; and J. R. Rummel on percussion. The group performed four songs, three including solos.

All three groups filled the evening with loads of talent, and the audience's reaction showed. The performers and conductors even felt confident about their performance.

"I really think it was a great idea to bring all three groups together, for it gives everyone a chance to show off their talents," said Barnard. "The performance was very energetic and everyone played well."



PHOTOS BY KEVIN FALLON / BEHREND BEACON
The Behrend Concert and Jazz Bands and the Behrend College Choir and Studio Singers regale an appreciative audience during "A Musical Collage."

Behrend College Library Extended Hours for Finals

April 19 & 26	Fri.	8 a.m. - 10 p.m.
April 20 & 27	Sat.	10 a.m. - 10 p.m.
April 21 & 28	Sun.	Noon - 1 a.m.
April 22 - 25	Mon. - Thurs.	8 a.m. - 1 a.m.
April 29 - May 2	Mon. - Thurs.	8 a.m. - 1 a.m.
May 3	Fri.	8 a.m. - 8 p.m.
May 4 - 5	Sat. - Sun.	CLOSED

Earth Week Activities

Beginning on Earth Day, April 22, various activities will focus campus attention on conservation and preservation issues to empower group and individual action. Programs follow a daily theme to provide information, fun, giveaways, and awareness.

Monday, April 22 – Earth & Global Issues Day

- 9:00am - **Elementary School Ecology Service Project** – Reed Union Building
- Noon - **Kevin Locke** – World-renowned Native American Hoop dancer and flute player – McGarvey Commons
- 1:00pm - **Town Hall Meeting** – A report on Behrend Taskforce goals for campus ecological sustainability, Pennsylvania Sea Grant, and the Lake Erie-Allegheny Earth Force – McGarvey Commons
- 7:00pm - **Earth on Edge** - A PBS/Bill Moyers movie with discussion to follow – Smith Chapel Living Room

Tuesday, April 23 – Land & Air Day

- 11:00am – 4:00pm - **Student and organization tables** - Reed Rear Patio/Rainsite: McGarvey Commons
- Noon - **Rock Climbing Wall** – Outdoors Club - Reed Rear Patio /Rainsite: McGarvey Commons

Wednesday, April 24 – Water Day

- 10:00am – 4:00pm - **Pennsylvania Sea Grant** information and displays - Reed Rear Patio/Rainsite: Wintergarden
- 10:00am - 4:00pm - **Student and organization tables** - Reed Rear Patio/Rainsite: Bruno's Lobby
- 1:30pm - **Erie Zoo & Bio Club** presentation with animal guests - Reed Rear Patio/Rainsite: Wintergarden
- 7:00pm - **Bad Moon** – Bio Club presents a cover band in Bruno's

Thursday, April 25 - Energy & Transportation Day

- 10:00am - 4:00pm - **Student and organization tables** - Reed Rear Patio/Rainsite: Bruno's Lobby
- 6:30pm - **Odaiko** - Taiko drumming celebrates Asian American culture through a powerful performance to create harmony and community expressing creative energy as one voice – McGarvey Commons

Friday, April 26 - Food & Recycling Day

- All Day** - **Wintergreen Gorge Trail Restoration Project** - G.E. Transportation Systems employees & college volunteers will clean up our environmental treasure - Sign up at the Reed Union Building Information Desk to participate
- All Day** - **Eating Low on the Food Chain** - Special menu will be offered in Bruno's
- 10:00am - 4:00pm **Student and organization tables**- Reed Rear Patio/ Rainsite: Bruno's Lobby
- 4:00pm - **Finals Blowout** – Featuring the band, Distorted Penguins - Sponsored by Panhellenic in Junker Center

Earth Week Planning Committee and core team members:

- | | | |
|-------------------------------------|---------------------------------------|--------------------------------|
| Behrend Biology Club | Environmental Science Class-BiSci 003 | G.E. Transportation Systems |
| Housing and Food Services | Lake Erie-Allegheny Earth Force | Office of the Provost and Dean |
| Maintenance & Operations/Janitorial | Office of Student Affairs | Outdoors Club |
| Panhellenic Council | Pennsylvania Sea Grant | Sustainability Task Force |
| Society of Automotive Engineers | Society of Women Engineers | Tri Beta Biology Honorary |