

**•Question and Answer
with an off-campus
resident•**

Q: What do you like about living here?

A: I can have people over whenever I want, have parties, and listen to music late.

Q: How does it measure up, money-wise?

A: It's actually \$300 cheaper than living on-campus before we pay utilities.

Q: Are there a lot of kids your age living here?

A: There are four in the townhouse, but not that many in the neighborhood. Most of our neighbors are families and the elderly.

Q: What *don't* you like about living here?

A: Driving to class everyday.

Q: Is it harder to meet people living off-campus?

A: Not really. I meet people at class and at meals.

Q: Is it difficult to get to and from class?

A: Yes; I have to drive to and from class. I can't just walk like the kids who live on-campus.

Q: Would you apply for housing next year?

A: Absolutely!

Q: Describe the amenities in the townhouse you live in.

A: We have two bedrooms, a deck and grill, my own kitchen, and a two-car garage. The neighborhood is more like a family environment than a loud and crazy dorm hall, so it's quiet, but I can have fun too!

-Alicia McGrail

•Off-Campus Housing Rates•

The rent of apartments, houses, and townhouses may vary based on location and size. Utilities are generally not included in the rent price, so you must pay that monthly, as well.



BEACON FILE PHOTO

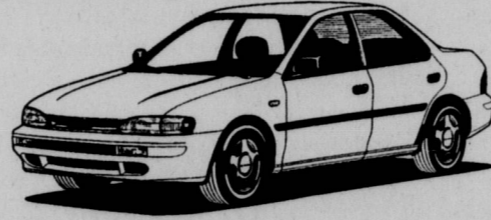
Townhouses like this one in Brookwood Village are often popular choices for off-campus living when they are affordable and located close to campus.

**•Life as a Commuter•
by Erinn Hansen
staff writer**

Living at home, or commuting, is very different from living in a dorm, and has many advantages to college students. One advantage of commuting is students spend less money. Students don't have to pay for room and board, students don't have to pay to do laundry, and students don't have to have a meal plan if they don't want one. If students do want a meal plan, they have the option of choosing the Diner's Club over the A La Board. With the Diner's Club, the minimum payment is only \$25, compared to the A La Board price. Another advantage is that students are still able to be with their families. While staying at home, students have a quieter place to study, and students can come home when they have a break between classes. Along with that, it is a lot easier to keep a job within the city. One other advantage is that students can still earn a quality education, as well as studying for the career of their choice, while living at home.

While there are advantages to commuting, there are also some disadvantages. One disadvantage is, again, money. Even though students don't have to pay for room and board, they still have to pay for tuition, classes, books, and gas money for traveling. Another disadvantage is time. When students commute, their time is limited when it comes to getting to class on time. Students need to get up a little earlier to avoid the rush-hour traffic, school zones, and most of all, snow and ice during the winter. The last disadvantage, which is the most important one of all, is it's harder to stay involved with the campus. When students commute, they are limited to the activities and events that go on, especially in the dorms. One way students can get involved is by joining some of the many student activities and clubs that Behrend offers. Students also need to pay attention to bulletin boards, and e-mails in order to know what is going on, and what events are taking place. Finally, students most importantly need to make some friends and stay in contact with them, whether it be on the phone, online, or any other forms of communication.

Other than the few disadvantages that are involved with being a commuter, it is also a wonderful thing, with the many advantages that are listed above. Basically, it is okay to be a commuter, especially if students get involved with campus activities.

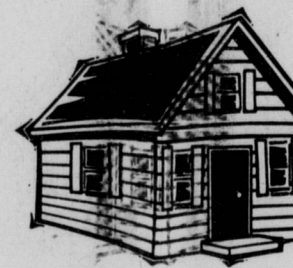


**•A Landlord's Perspective•
by Alicia McGrail**

Mary Constanzo rents out two-bedroom apartments at E. Ninth street. Each apartment costs \$380 a month, plus utilities.

"There's a lot more freedom here than at dorms. There are no curfews, my tenants can smoke if they wish, and have parties. I don't mind as long as they respect their neighbors by keeping the noise moderate," said Constanzo.

As Penn State Behrend fre
enough questions about cla
what exactly goes into a D
Picking where you want to
confusing and tedious o
A careful assessment o
drawbacks associated with
off-campus housing can he
much eas



**Off-Campus
Living
vs.
On-Campus
Living**

a supplement by Beacon
Alicia McGrail, Kar
Cara Southworth, Em
and Erinn Ha



•Meal Plans•

Students living on campus must also take meal plans offered by the school. Students living on campus residence are obligated by the meal plan. Students living off-campus are not required to take a meal plan, but may do so if

2001-2002 Meal Plan

Plan	No. of Points	Point Cost	Base
1	33,000	\$330	+\$88
2	38,000	\$380	+\$88
3	43,000	\$430	+\$88
4	49,000		+\$88
5	54,500		+\$88
6	67,500		+\$88

-Alicia McGrail