

On The Road...

Waterford Boasts revolutionary history and fruit slush

by Melody Sherosky
contributing writer

Without much time to travel far from Erie this past weekend, I snagged a friend and we headed to the nearby town of Waterford, PA, just half an hour's drive from Behrend. I knew very little about Waterford. There had been a fort there, George Washington slept there, and Troyer Farms Potato Chips come from Waterford. What I found was that, far beyond a fort (and potato chips), Waterford has more history than many of the small towns around Erie. And it has some food worth traveling for!

The main drag of Waterford, which runs roughly from the park to the Eagle Hotel, is about three blocks long. In that three blocks, there are at least four restaurants, and many more antique shops than anyone could possibly need. Also, there are several of those big signs that tell you about the historical significance of the spot.

It seems everybody wanted to build their fort in Waterford; the French, the British and then the Americans successively built forts there during the 18th Century. The French left in 1759, and burned down their own fort. The British took over the area and built a fort that was then burned down by Native Americans in 1763. No one burned down the American settlement that followed, and the town of Waterford was laid out by



This is the Eagle-Hotel, which is located in Waterford.

CONTRIBUTED PHOTO

1794.

In the park you will find a map of the historical sites you can walk to in Waterford. Also, there is a huge memorial to revolutionary soldiers who died "in the vicinity" of the park. Somewhere in the East park, a military horse is buried as well, in full battle regalia. Ap-

parently he was a war hero, and was buried with honors.

There are many interesting historic buildings in Waterford, including the Waterford Hotel and the Eagle Hotel, both of which now house restaurants of great reputation. We ate at Kellie's Sugar and Spice restaurant in the Eagle

Hotel. Among other things, Kellie's has some Amish food but I was not feeling that adventurous. I settled for a huge egg-salad sandwich, sweet-potato french-fries with honey, lemonade and fruit slush. Our waitress explained that fruit slush is pineapple and other juices frozen with chunks of banana and

peaches in the middle.

Then you let it thaw a little. Ta-da, fruit slush. For just a dollar, fruit slush is an incredible bargain, it was really good. Lunch for two cost just \$10! Kellie's also has home-made pies, which I may return for.

After a lunch and a historical walk through Waterford, you should consider driving a little farther down route 19 to Lake LeBoeuf, a great fishing spot and a site of historical bad luck for ferry boats. Not only is the lake the only natural home of tiger muskie (a fish), but it is the permanent resting place of two ferry boats, the "Queen Belle of LeBoeuf I and II." The Belles were steamboats that sold rides around the lake for just 10 cents. The second boat was only built after the first sank.

Then, the second boat, years later, caught fire and sank as well. George Washington had much better luck boating the lake; his long canoe trip down French Creek began on Lake LeBoeuf. If you are at all interested in history, including burning boats and dead heroic horses, you should visit Waterford. And if you are not interested in history, I can highly recommend the fruit slush and a walk near Lake LeBoeuf. Either way, Waterford was worth the half an hour drive. Until next time...

Directions: From Behrend take I-90 West to Peach Street/ Route 19, go South on 19 for about 15 miles or until you see a sign saying "Welcome to Waterford."

Hot Spots in Erie

Dick's Sporting Goods

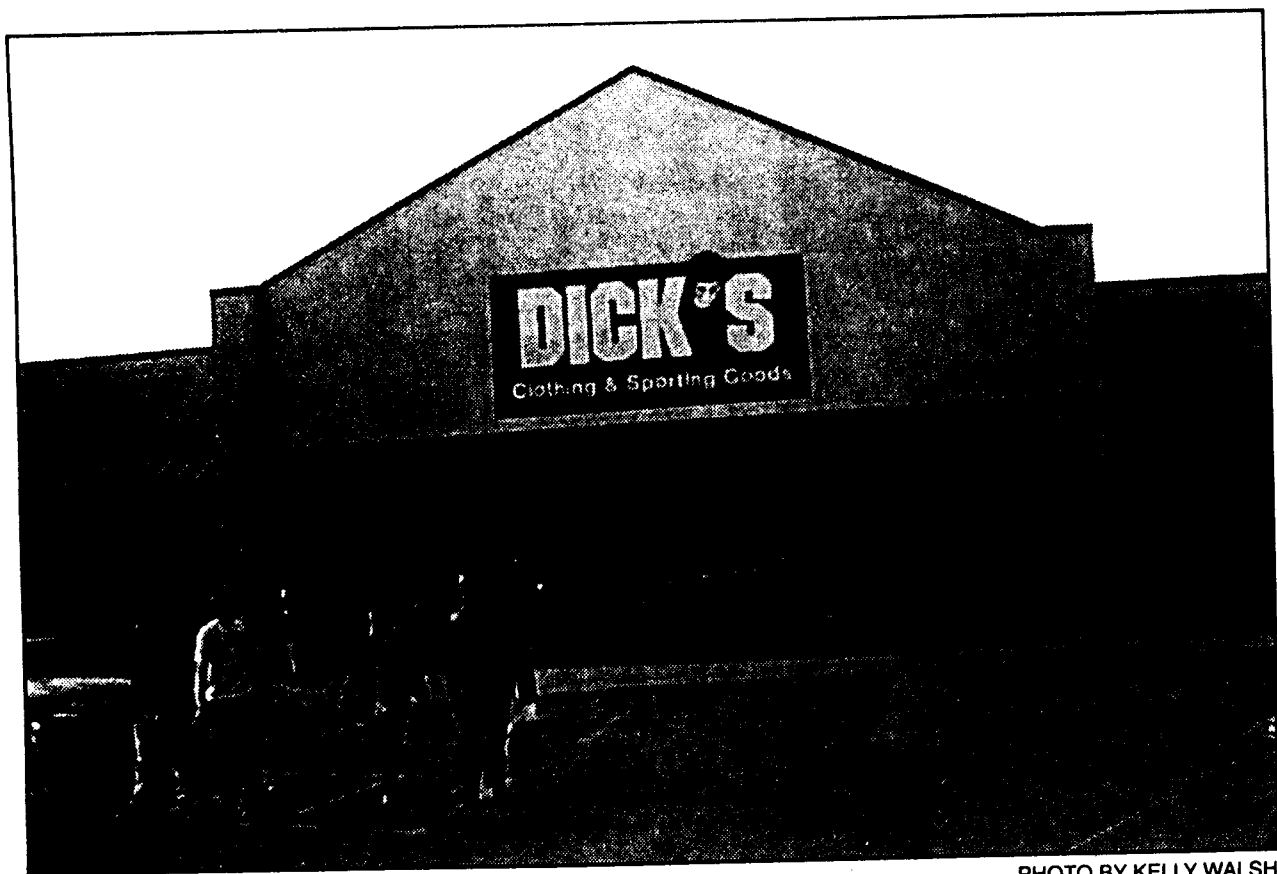


PHOTO BY KELLY WALSH

Dick's Sporting Goods is located outside the Millcreek Mall, next to Office Max.

by Karl Benacci
features editor

Erie, Pennsylvania is a great sports town; however, there aren't many large sports stores for the local athlete to shop at.

What's someone to do when they want a store that has a diverse selection of products?

Students can go to Dick's Sporting Goods, which is located outside the Millcreek Mall, next to Office Max.

Dick's Sporting Goods has a wide selection of sports products, includ-

ing apparel, equipment, and safety equipment.

Every sport is included at Dick's, including basketball, football, baseball, swimming, and hockey.

However, Dick's has a great selection of items in harder to find sports genres, particularly extreme sports, including rollerblading and skateboarding.

Dick's also has a great selection of classic sport products such as golf and hunting equipment.

There's even a putting green for those who want to experiment with different putters.

Students should definitely check out Dick's Sporting Goods, especially with the holiday season coming up. Dick's has great gift ideas for everyone in the family.

A great selection and decent prices are a sure way to score quality sports products, making Dick's Sporting Goods a definite *Hot Spot in Erie*.

ABC Weekend of Events

by Jennie Ellison
contributing writer

What are you doing this weekend? Well, instead of saying "nothing," join the Association of Black Collegians for a weekend full of events that will be good for the mind, body, and possibly give you a little bit of soul. The weekend kicks off with Total Makeover, which starts at 11:00 on Saturday, November 10th. It will take place in the Smith Chapel. The makeover workshop will include beauty makeovers and also a spirit makeover for your mind. Total Makeover was funded by SAF, so it is free to all. After the Total Makeover, be ready to cheer or boo at the Rhyme Out. The Rhyme Out is talent show filled with rappers, poets, and singers who will compete for prizes provided by ABC. The cost of the Rhyme Out is \$1 for Behrend students and \$2 for anyone who is not of Behrend. The Rhyme Out will be held in Reed 117. The evening will end with a Reggae party, which will start at 10:00 PM and end at 3 AM. The cost of the reggae party will be \$2 for Behrend students and \$3 for non-Behrend students. There is discounted price for those attending both the Rhyme Out and Reggae party of \$2 for Behrend students and \$3 for non-Behrend students. So Behrend students, there is no reason for you to be bored this weekend. The activities do not stop there. Closing out the Association of Black Collegians weekend will be Black Expressions on Sunday, November 11th. Black Expressions is an event where people can display any talent they have, whether it be through song, dance, poetry, or any other talent you want to display to Behrend. It will be held in Bruno's from 8:00 to 12:00. It is free of charge and light refreshments will be provided. The Association of Black Collegians has planned these events! so students will not have to leave campus in order to have a good time.