

FRIDAY, SEPTEMBER 7 THROUGH FRIDAY, SEPTEMBER 14

7 Friday

- ~ Concert Committee chairperson application deadline; Student Activities Office
- ~ 100-Mile Club deadline; Junker Center Information Desk
- ~ 3 p.m. — Amnesty International meeting; Reed 114
- ~ 4 p.m. — Intramural deadline, men's & women's medal and team golf, and co-ed team golf; IM Office, Junker Center
- ~ 7 p.m. — Zeta Beta Tau Rush; RUB Desk
- ~ 10 p.m. — Lion Entertainment Board movie, "Along Came a Spider;" Reed 117

8 Saturday

- ~ 8 a.m. — Protestant Campus Ministry/Habitat for Humanity Work Day; East Erie
- ~ 10 a.m. — Zeta Beta Tau 3 on 3 Basketball Tournament; Perry Basketball Courts
- ~ 2:30 p.m. — Lion Entertainment Board movie, "Along Came a Spider;" Reed 117
- ~ 3:30 p.m. — Women's Soccer Match; Behrend Fields
- ~ 10 p.m. — Lion Entertainment Board movie, "Along Came a Spider;" Reed 117

9 Sunday

- ~ 1 p.m. — Women's Tennis Match; Tennis Courts
- ~ 2 p.m. — Women's Soccer Match; Behrend Fields
- ~ 8 p.m. — Catholic Mass; McGarvey Commons



10 Monday

- ~ 6 p.m. — Studio Theatre auditions, "Sand Mountain;" Studio Theatre
- ~ 9 p.m. — Men's Club Volleyball Team meeting; Erie Hall Lobby

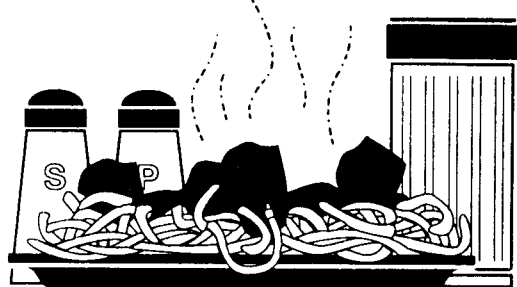


11 Tuesday

- ~ 4 p.m. — Matchbox Players meeting; Studio Theatre
- ~ 5 p.m. — Studio Theatre auditions, "Sand Mountain;" Studio Theatre
- ~ 7 p.m. — Zeta Beta Tau Rush; RUB Desk
- ~ 7 p.m. — Women's Volleyball Game; Junker Center
- ~ 7:30 p.m. — Speaker Winona LaDuke, "Honor the Earth: Our Native American Legacy;" McGarvey Commons
- ~ 8:30 p.m. — Alpha Sigma Alpha introductory meeting; RUB Desk

12 Wednesday

- ~ 6 p.m. — Harambee Dinner; McGarvey Commons
- ~ 7 p.m. — Sigma Tau Gamma Rush; RUB Desk
- ~ 9 p.m. — Alpha Sigma Alpha Rush; RUB Desk

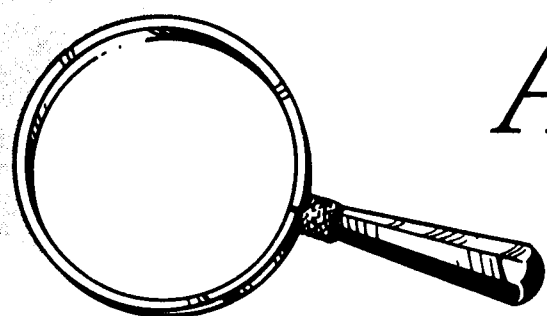


13 Thursday

- ~ 3:30 p.m. — Women's Tennis Match; Tennis Courts
- ~ 5:30 p.m. — Commuter Council meeting; Reed 113
- ~ 7 p.m. — Delta Chi Rush; Perry Basketball Courts
- ~ 8 p.m. — InterVarsity Christian Fellowship large group meeting; Reed 114
- ~ 9 p.m. — Alpha Sigma Alpha Rush; RUB Desk

14 Friday

- ~ 3 p.m. — Women's Volleyball Tournament; Junker Center
- ~ 8 p.m. — Allegheny College Theatre member Dan Crozier presents, "Some Parts Missing or Broken;" Studio Theatre
- ~ 9 p.m. — Lion Entertainment Board Karaoke; Bruno's
- ~ 10 p.m. — Lion Entertainment Board movie, "Dr. Dolittle 2;" Reed 117
- ~ 10 p.m. — National Society of Black Engineers Pajama Blowout; McGarvey Commons



A Closer Look

Friday, September 7
10 p.m.

Lion Entertainment Board movie, "Along Came a Spider" LEB presents movies every Friday and Saturday in Reed 117.
Costs: \$1 for evening shows
\$.50 for matinees
Times: Fridays, 10 p.m.
Saturdays, 2:30 and 10 p.m.

Saturday, September 8
8 a.m. to 4 p.m.

Protestant Campus Ministry and Habitat for Humanity Work Day

Congregations in East Erie are having a work day for Habitat for Humanity. Help is needed for painting, dry-wall finishing, landscaping, and clean up.



No Experience Necessary!

For more information, contact Kathy at x7139 or ksc11@psu.edu

Monday, Sept. 10
6 p.m. to 7:30 p.m.

Studio Theatre auditions for "Sand Mountain" The Studio Theatre is holding auditions for the fall performances of "Sand Mountain." Auditions will also be held

Tuesday, Sept. 11,
from 5 to 7 p.m.

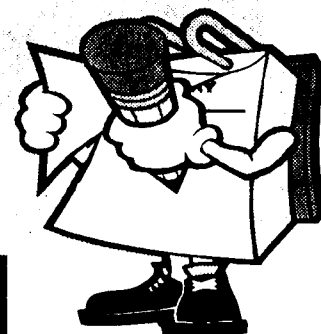
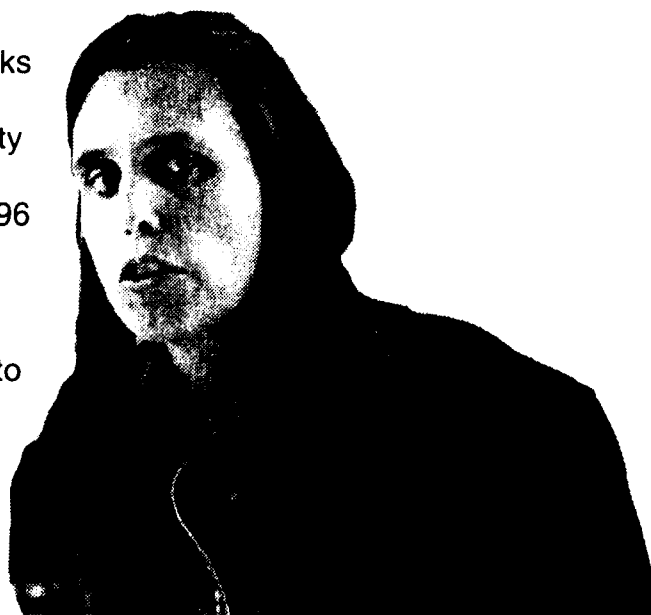
Roles are available for five men and two women, and all are open to the public. Scripts are available for review by contacting Mr. Elliot in Academic 145 at x6279 or axe12@psu.edu.

Tuesday, Sept. 11
7:30 p.m.

Creative the Global Future Speaker Series
Winona LaDuke
"Honoring the Earth: Our Native American Legacy"
McGarvey Commons

Winona LaDuke is an internationally known Native American activist and director of the Honor the Earth Fund. She is also the author of several award-winning books and was Ralph Nader's Green Party vice presidential running mate in 1996 and 2000.

LaDuke will talk about her struggle to restore the local land base and culture on the White Earth Reservation in Minnesota.



Mark Your Calendars

Monday, Sept. 17
Noon

Music at Noon: The Logan Wintergarden Series begins with the

Abaca String Band



Get your meetings, activities, announcements, etc. on our Calendar of Events Page!

How to get your Calendar info in the paper:

~ All submissions must be received by **Monday at 5 p.m.**

for publication in that week's issue

~ Send submissions to the attention of the **Calendar of Events Page**

~ E-mail behrcoll3@aol.com

~ Put info in **campus mailbox**, bottom floor, Reed Union Building, near e-mail kiosk and next to restrooms

~ Give us a call at **898-6488**

~ While you should include all possible information,

submissions may be edited due to space constraints;

please contact the *Beacon* for special requests