

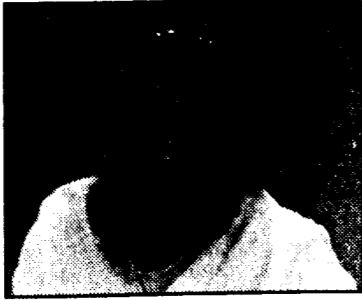
**QUESTION OF THE WEEK**

*What do you think of reality-based TV?*



"I thought that *Survivor* was interesting, but I don't like *Temptation Island*—they are trying to break up relationships."

Albert Lorya  
PLET 07



"I don't like it at all — I don't like *Temptation Island*."

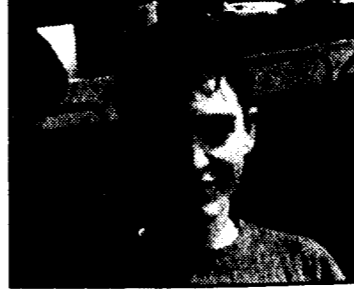
Amy Hunter  
Business Economics 04



"I think its kinda like a soap opera." Bethany Prince (left), Bio 02

"I just don't like *Temptation Island*." Alisha Bowser (center), Bio 02

"I think that its a horrible setup." Laura Evans (right), DUS 02



"Its positive for the TV ratings, but its morality isn't the greatest."

Brian Peganoff  
Finance 02



"It shows the hard facts of life — how people live in some places, and the things that they go through."

Sundeep Bhatia  
MIS. 04

**Laptop users now have on-campus network access**

by Jamie Salapek  
staff writer

Behrend students are living in a fast-paced technological age. Students dart from one class to another, grabbing a bite to eat in between. With final projects, last minute assignments, and a ton of papers to finish, modern technology is relied on to get the jobs done.

The Computer Center, along with the Library, has introduced the Mobile Computing Network to provide laptop users with better, quicker, and more convenient access to the Penn State Network. This service will permit students to bring their laptops to campus and provide access to the Penn State Network, right from library workstations.

The Mobile Computing Network is equipped with 20 mobile computing ports that laptop users can utilize for network connectivity. These ports, located on all three floors of the Library, supply laptop owners with the same access to the network that on-campus residents and off-campus dial up users can have.

To gain access to this convenience, the laptop user must install some required hardware that is supplied by the Computer Center — free of cost. However, only users who have an active Access Account are eligible to use this service.

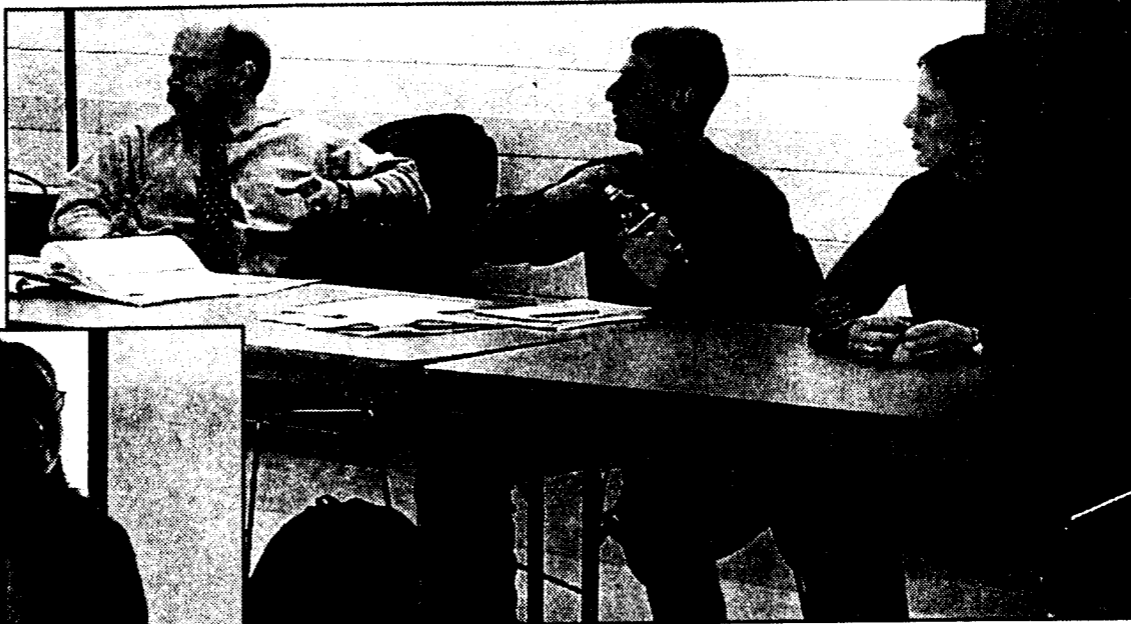
Maps of the ports are available at the Library and the Computer Center. Any problems experienced while installing the hardware should be directed to the Consultant Desk in the Computer Center, at X6415.

**SGA in the new millennium**



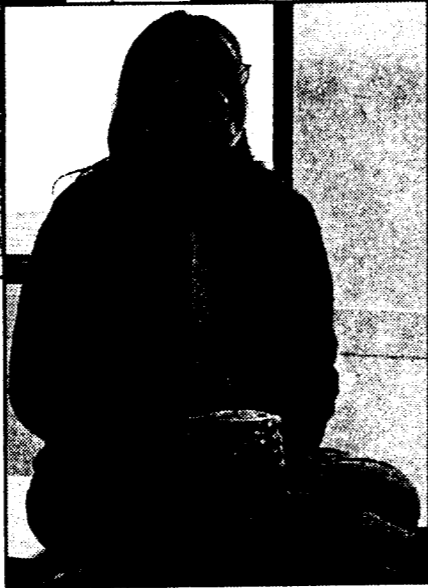
PHOTO BY JEFF MILLER

ABOVE: The 2000-2001 SGA poses en masse in Reed 114, where their weekly meetings are held at 5:20 p.m. Jen Miles, front center, is this year's president. Ken Miller, front left, is SGA's advisor as well as the Director of Student Affairs.



PHOTOS BY BECKY WEINDORF

ABOVE: Advisor Ken Miller, Vice President Clint Skillen, and Senator Sunny Webb discuss the future of Behrend's proposed FM radio station during an SGA committee meeting for that purpose.



LEFT: SGA President Jen Miles presides over the radio station committee meeting on Tuesday, January 23, in Reed 113.

Check out  
**THE BEHREND  
BEACON  
ONLINE!**

[www.clubs.psu.edu/  
beacononline/](http://www.clubs.psu.edu/beacononline/)

**16th Anniversary Special**



**Two Large,  
One Topping Pizzas**

**\$11.99**

Valid for only at participating locations through 2/11/2001  
Customer pays all applicable sales tax. Additional toppings extra.

**CALL YOUR PAPA**

**Erie East, Wesleyville & Harborcreek**  
West of Hanson Road & East of East Avenue and Lake Pleasant Road  
**1713 East 38th Street**

**824-8282**



we throw all kinds of  
**[obstacles]** at you.  
tuition isn't one of them.

Sheer cliffs, rope bridges, final exams. With obstacles like these in your way, tuition's the last thing you should have to worry about. But if you qualify, you can get a 2- or 3-year Army ROTC scholarship that'll help make life easier over the long haul. Talk to your U.S. Army ROTC representative. And get a leg up on your future.

**ARMY ROTC** Unlike any other college course you can take.

