

Election 2000

Down

PENNSYLVANIA ELECTION RESULTS

SENATE

Rick Santorum (R) 2,465,412
Ron Klink (D) 2,134,734

HOUSE

District 1
Robert Brady (D) 147,959
Steven Kush (R) 20,270

District 2
Chaka Fattah (D) 175,512

District 3
Robert Borski (D) 129,838
Charles Dougherty (R) 58,712

District 4
Melissa Hart (R) 145,348
Terry Van Horne (D) 100,945

District 5
John Peterson (R) 147,425

District 6
Tim Holden (D) 136,663
Thomas Kopel (R) 68,468

District 7
Curt Weldon (R) 171,670
Peter Lennon (D) 93,655

District 8
Jim Greenwood (R) 153,779
Ronald Strouse (D) 100,520

District 9
Bud Shuster (R) Unopposed

District 10
Don Sherwood (R) 124,151
Patrick Casey (D) 111,879

District 11
Paul Kanjorski (D) 130,780
Stephen Urban (R) 66,450

District 12
John Murtha (D) 143,547
Bill Choby (R) 55,541

District 13
Joseph Hoeffel (D) 142,276
Stewart Greenleaf (R) 122,931

District 14
William Coyne (D) Unopposed

District 15
Pat Toomey (R) 117,928
Ed O'Brien (D) 103,269

District 16
Joseph Pitts (R) 161,653
Bob Yorczyk (D) 79,674

District 17
George Gekas (R) 166,086
Leslye Hess Herrmann (D) 66,124

District 18
Mike Doyle (D) 155,400
Craig Stephens (R) 68,554

District 19
Tod Platts (R) 167,443
Jeff Sanders (D) 61,039

District 20
Frank Mascara (D) 144,476
Ronald Davis (R) 80,146

District 21
Phil English (R) 134,325
Marc Flitter (D) 86,838

Florida flip-flop rattles television analysis

by Tim Jones
November 08, 2000
Chicago Tribune

The presidential race that for weeks had been described as too close to call was all of that when the television networks began their election night coverage Tuesday.

As a politically riveting television drama unfolded, state by state, it turned out that the networks didn't know as much as they thought about the heart of their election night coverage: exit polling data.

Shortly before 9 p.m., just as the electoral momentum seemed to be building for Democratic Vice President Al Gore, the networks reversed their earlier projection that Gore would win Florida and its 25 electoral votes. Two hours after being placed in Gore column, the state was declared too close to call. Suddenly the electoral vote balance tilted to Bush.

"We just don't trust the information we're getting out of Florida," said CNN's Judy Woodruff, not mentioning the credibility of other exit polling data from other states.

"There's nothing more delightful than

watching an election where you actually have to wait to see what

voters are going to do," said CNN political analyst Jeff Greenfield, trying to smooth over the network's obvious embarrassment.

"This really shouldn't happen," thundered William Bennett, the former education secretary and a Bush supporter. "You don't call a state like Florida and then take it back... This really is an interference in democracy."

Waiting for the votes to be counted has been anathema to modern-day election coverage, as television and newspapers have spent millions of dollars on polling and exit polling, all with the seeming intent of letting Americans know the outcome before bedtime.

This Election Day stood as a testament to the proliferation of technology and the Internet as Americans tried to get an early read

on an election that poll after poll said was too close to call. Several news organizations said Internet records were broken as millions of Americans logged on to look up results and get other information that wasn't being reported on television.

ABC News said visitors viewed nearly 13 million ABC Web pages by 4 p.m., breaking the record of 10 million set in September 1998 with the release of Independent Counsel Kenneth Starr's report to Congress on President Clinton's relationship with Monica Lewinsky.

CNN was getting 10 million CNN Web page visits every hour. MSNBC projected page views of 5 million for the day. An early-afternoon report from the online Drudge Report was headlined "EARLY EXIT POLLS SHOW CLEAR WINNER!" The story focused on exit poll results from Waltham, Mass., and West Hollywood, Calif.

Yahoo! said the bulk of its visitors came for election returns. The significance of the

Internet as an information source was due in large part to the proliferation of computers.

But the drama of the day was reserved for television, which offered an unusual and compelling display of reality television. Like in a football game, the score shifted as the electoral count moved west across the country. Bush gained the early lead. When Gore was declared the winner in Florida, 1996 Republican nominee Bob Dole said, "This certainly makes it tough."

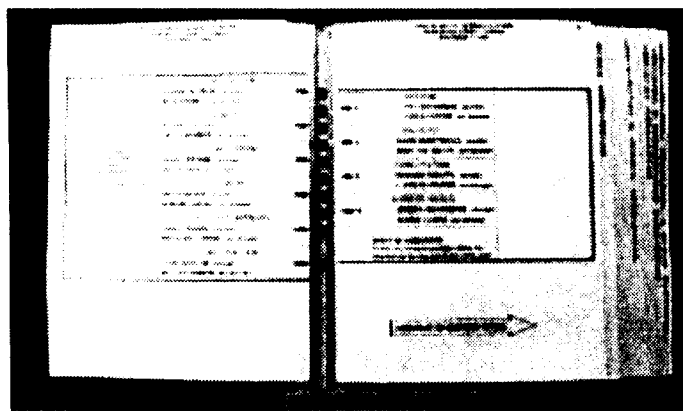
As the uncertainty over the fate of Pennsylvania's electoral votes continued, NBC's Tim Russert was reduced to using a magic marker on a vinyl board to explain to viewers how Vice President Al Gore could win the election without winning Pennsylvania.

Within minutes it became a moot point as the state was declared for Gore.

The drama built as the night wore on. By 9:30, political commentator Mark Halperin, speaking on ABC, raised the prospect of vote count irregularities in several states.

"I think the lawyers will want to at least take a look at it," Halperin said.

Officials say more than 19,000 ballots were disqualified in Palm



The confusing ballot layout in Palm Beach County that some claim led hundreds of Democratic partisans to mistakenly vote for Reform Party candidate Patrick Buchanan.

by Richard Lezin Jones
November 09, 2000
Knight-Ridder Newspapers

WEST PALM BEACH, Fla. — More than 19,000 ballots were disqualified on election night in Palm Beach County, election officials revealed Wednesday.

The announcement came after three county voters filed a lawsuit calling for a revote here, alleging that the county punch-card ballot was so confusing that they mistakenly had voted for Reform Party candidate Patrick J. Buchanan instead of Vice President Gore.

The election officials said that 19,120 ballots from Palm Beach County had showed votes for more than one presidential candidate.

believed it was their own error," Henry Handler, the plaintiffs' attorney, told the Dow Jones News Service. "But they discovered later in the press accounts that they were not alone. They feel the ballot was so deceiving that they were disenfranchised."

The new ballot layout so many Palm Beach County voters found troubling resembles a double-sided booklet. Some voters said that it featured so many names (10 presidential candidates and space for a write-in) and that its circles and arrows were arrayed in such a way that they still aren't sure for whom they voted.

"I looked at it and looked at it and looked at it," Elise Richel, 68, recalled Wednesday, "and I went through the entire ballot and I said, 'Did I do it right? I think I did it right. But it was so

easy to do it wrong. I have to tell you, that ballot was so confusing."

The Palm Beach County lawsuit — filed by Delray Beach City Commissioner Alberta McCarthy, Delray chiropractor Andre Fladell and West Palm Beach homemaker Lillian Gaines — added to the muddle already created by the recount, the unknown number of absentee ballots still outstanding, and a shower of other allegations of voting irregularities around the state.

"That ballot in Palm (Beach) County is really misleading," Democratic National Committee general chairman Edward G. Rendell said at a news conference in Philadelphia Wednesday, indicating that the party is prepared to ask for a revote.

"You go into court, have witnesses who say, 'I didn't know what I was doing.' You show it to an expert who says Buchanan could not have gotten that many votes, and you ask everybody to vote again. It's obviously a very extreme remedy, we have to make a very strong case.... Clearly something went wrong. There's no way (Buchanan) got 3,600 votes there." Minnie Heimlich of Delray, Fla., agreed. "My neighbors are crying because their vote went to Pat Buchanan and they can't stand it," she said. "I could cry. I'm a grandmother ... but I'm very alert, I'm wide awake," said Heimlich, who declined to give her age. "But some of my contemporaries have slowed up. They wouldn't have known if that hole was for Buchanan."

Democratic Rep. Robert Wexler, whose district included part of the county, produced a

memorandum issued by Elections Supervisor Theresa LePore, a Democrat, around 5 p.m. on Election Day that hinted at the confusion among voters.

The memo told poll workers to remind all voters "that they are to vote only for one presidential candidate and that they are to punch the hole next to the arrow next to the number next to the candidate they wish to vote for."

"Hundreds of people spoke to me yesterday before the polls closed about their extraordinary confusion. I myself when I went to the polls was confused," Wexler said. "I saw the people who came out of the polling places. They were crying. They were in tears. In hysterics."

Republican officials were skeptical. "In the end there will be 46,000 people claiming they voted for Pat Buchanan by mistake," said U.S. Rep. Mark Foley, a Palm Beach Republican.

He told the Los Angeles Times that the missed-punchhole argument was "a stretch of the imagination" and asserted that Buchanan easily could have polled 3,407 votes in a county that gave Foley's own ultraconservative, Reform Party congressional opponent 2,651 votes on Tuesday.

"I saw them going to the polls with Confederate flags flying on their trucks," said Foley, who said Democrats were grasping at straws.

He and others said the ballot had been reviewed and approved by both major political parties and by state election regulators.

LePore declined to comment. A staffer said her office would finish its recount before considering any other complaints from the pub-

Florida's 'overseas ballots' could be worth their political weight

by Paul Brinkley Rogers
November 09, 2000
Knight-Ridder Newspapers

MIAMI — They are called "overseas ballots" and in every other election, the 2,000 or 3,000 votes received from Floridians living abroad had almost no statistical importance in the outcome of a presidential election.

But suddenly, with George Bush leading Al Gore by less than 2,000 votes in Florida, absentee ballots cast by GIs, students, teachers, missionaries, business people, diplomats and other people in far-flung lands could be worth their political weight in gold.

"Who would have thought," exclaimed

Bush-voter Margaret Sohn, who is in San Jose, Costa Rica, and who mailed her ballot a week ago to Duval County. She said another Florida resident in San Jose called her at 7 a.m. Wednesday bemoaning the fact he had not mailed his vote in time to help decide the election.

None of Florida's 67 counties know just how many of these ballots are still en route — and elections officials might not know for sure until Friday Nov. 17, the mail-in deadline for overseas ballots. Many counties don't keep track of how many they've sent out and they don't know how many to expect back.

About 2,300 were counted statewide in the 1996 election.

Further complicating the recount process is that in some counties, many overseas votes were counted on election night because they arrived before the polls closed. In others, they were not.

To be valid, the ballots had to be post-marked no later than Tuesday — election day. In addition, they had to be mailed from a foreign post office or from a U.S. military post office overseas. GIs usually vote GOP, officials said.

To complicate the picture even more, there is an additional overseas ballot category: "federal write-in ballots."

Pat Hollarn, elections supervisor for Okaloosa County, said these are blank bal-

lots military personnel receive from their unit's legal office. They fill in the name of their choice for president by hand. Okaloosa County has received six of them.

Some large Florida counties report mailing out hundreds of overseas ballots. Smaller counties sent out only handfuls.

Dave Byron, a spokesman for Volusia County, said that 434 ballots were requested. On election night, 298 of those were counted with other ballots.

"We'll have to see what happens to the rest," he said, saying he doesn't know how many of the rest will come back.

David Leahy, Miami-Dade elections supervisor, said he expects to get from 50 to 100