

FROM FRONT PAGE

ARC DEDICATION

When finished, the \$10.2 million ARC will be a 72,800-square-foot facility which will replace the 48-year old Erie Hall as Behrend's main sports complex. It will feature three all-purpose courts and a performance gym that seats 1,600. There is an eight-lane swimming pool, weight room, a three-lane running track with jumping pits, an aerobics room, locker rooms, offices, and additional exercise equipment.

Behrend Athletics Director Brian Streeter said, "students will now be able to work out year-round by swimming, using a treadmill, or playing pick-up basketball."

Streeter has helped build the Behrend athletics program since his hiring in 1997, witnessing much of Behrend's growth since 1995, in which Behrend doubled its varsity teams from 10 to 21.

Provost and Dean John Lilley puts the dedication of the ARC in perspective saying, "this facility symbolizes three decades of dreams and determination." He added, "with this building we nearly triple Behrend's indoor recreation space and provide great new opportunities

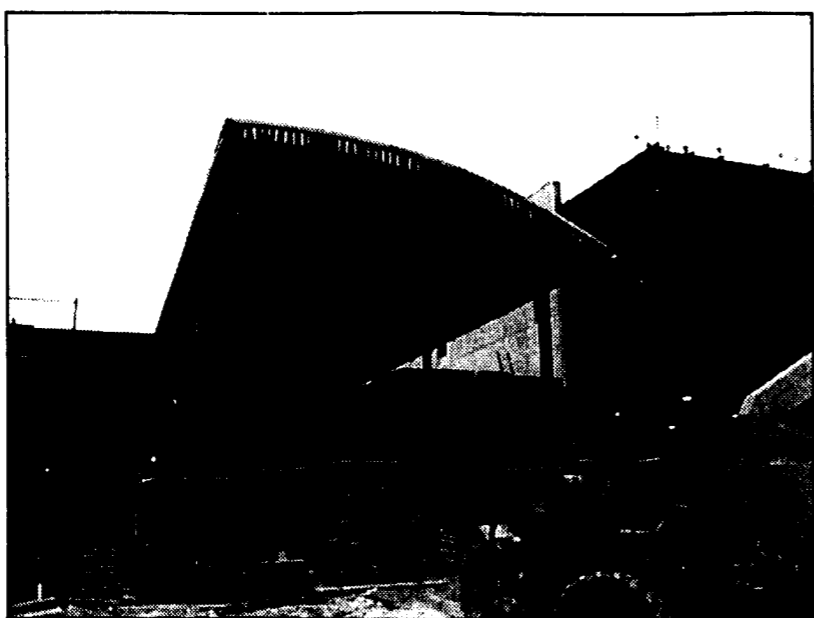


PHOTO BY BECKY WEINDORF

The ARC will be dedicated on Thursday, November 9, at 3:00 p.m. All students are invited to attend.

for our student-athletes to participate in a growing program. The ARC, along with the success of our student-athletes in Division III competition, has helped to create a new spirit of enthusiasm on campus."

Glembocki wants to continue that enthusiasm this Thursday. "We

want a very enthusiastic, rah-rah event fitting the building we are dedicating."

Students driving to the event should park in the Jordan Road lot by Police and Safety. Those walking can take the walkway from behind the Library to the ARC.

ALUMNI RELATIONS

Moore commented that he was "thrilled" to learn that he had been chosen for the job, which he will begin January 2, 2001. "I'm very excited about the opportunity," he said, adding that the creation of such a position is a huge development and will be very important to the college.

In order to build strong relationships with Behrend alumni, Moore stated that the first big task was to establish and mold Behrend alumni chapters, specifically in cities such as Philadelphia and Washington, D.C., as well as in North Carolina. He also hopes to build a network of alumni that will be willing to help Behrend graduates' transition into the workforce.

While serving as an advisor to the Behrend Lion Ambassadors, Moore

wants to increase the group's visibility on campus, in addition to raising students' awareness to the value of the Ambassadors. He stated that membership in the Lion Ambassadors provides a great deal of training, leadership, pride, and responsibility, and hopes to increase membership and consistency in the group.

Mr. Moore will meet with different student groups to discuss senior class gift options. While the ultimate decision lies with the senior class, Moore will listen to all suggestions, give recommendations, and help students to choose an appropriate gift to say "thank-you" to Behrend.

Another one of Moore's big tasks is to contribute alumni information to Behrend's web site. The web site is currently being redesigned, and

Moore hopes that an alumni page will be added. The alumni page, he said, will provide general alumni information, such as marriages, children, and accomplishments. He also wants to create a companion piece to the Behrend Quarterly. The additional piece will provide much of the information on the web page, but will also include current campus news, such as construction projects.

Although Kevin Moore enjoys his job in the Career Development Center, he is excited to be taking the next big step in his career. He stressed the importance of the new position to Behrend's maturation, saying that such a job is a key piece in a university's growth. Moore declared that the role of Director of Alumni Relations helps a college with both "fund and friend raising."

DON BLAIR

Trust of Greenwich, Connecticut in 1956. He rose through the ranks to eventually be elected president and CEO in 1984, and chairman and CEO in 1985.

During his 37-year career at Putnam, the bank grew from \$35 million in assets and 45 employees to \$700 million in commercial assets, \$2 billion in trusts, and more than 300 employees. At Blair's retirement in 1993, Putnam had grown to become the largest independent bank in Connecticut. Now a subsidiary of the Bank of New York, it still operates under the Putnam Trust name.

In addition to being a member of the first class to attend Behrend in 1948, Blair was the first editor of the *Nittany Cub*, Behrend's first student newspaper.

He is a life member of the Penn State Alumni Association and a

outstanding students with financial need.



PHOTO COURTESY OF UNIVERSITY RELATIONS

In this photo, Mr. Don Blair holds a copy of the *Nittany Cub*, Behrend's first student newspaper.

member of the Penn State President's Club. In 1998, he established the Donald R. Blair Scholarship Endowment to benefit

1999 Alumni Fellow.

The reception will be hosted by Dr. Lilley and Penn State President Graham Spanier.

JOIN THE BEACON . . .

**Call 898-6488
or email us at
behrcoll5@aol.com**

THE BEHREND
BEACON

FREE DELIVERY

Pizza Outlet

Behrend College Special

Large One Topping Pizza
and 2 cans of soda
for

\$7⁹⁹

4055 Buffalo Road 897-1818

NOW HIRING
Full and Part Time
Flexible Hours
Competitive Wages

STUDENT ID REQUIRED