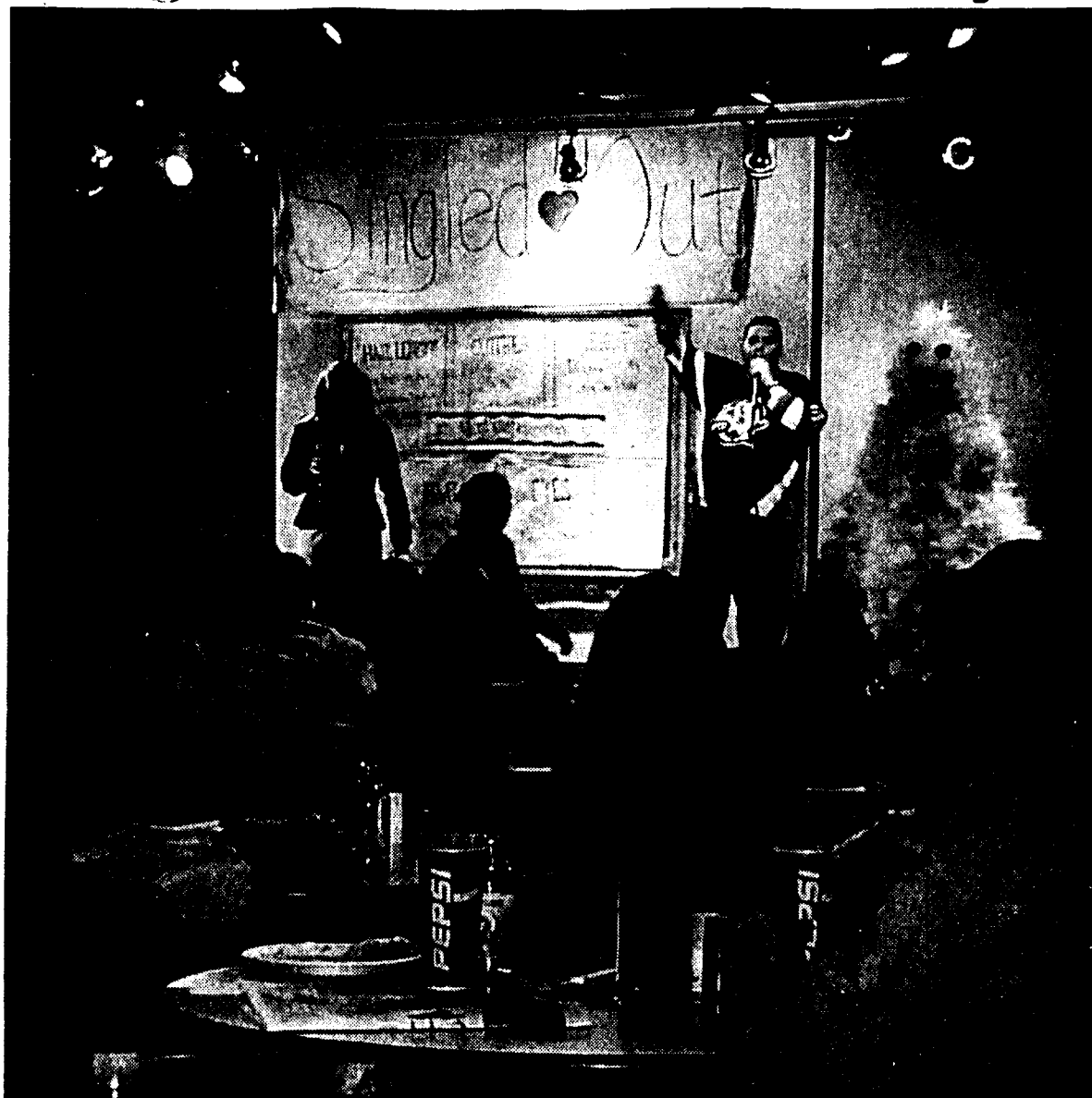


# Singled Out, Behrend-style



Maria Madigan and Dan Schiesser, both Residence Life Coordinators, host *Singled Out* in Bruno's on Monday, February 7. PHOTO BY LIZ HAYES

by Liz Hayes  
news co-editor

On Monday, February 7, 2000, the hall councils of Lawrence, Niagara, and Perry Halls co-sponsored their own rendition of *Singled Out* on the stage of Bruno's Cafe.

*Singled Out*, the once highly-rated MTV dating game show, was brought back to life for a large audience on Monday evening. Students, and some faculty and staff members as well, filled the left side of Bruno's to capacity.

The hall councils began planning the event separately: originally, Perry Hall was going to hold their own *Singled Out* on Monday, and Lawrence and Niagara Halls were going to hold a jointly-sponsored event on Wednesday, February 9. Once the halls learned of each other's events, however, they decided to combine their plans and to hold one *Singled Out* on Monday so that it wouldn't conflict with the bas-

kethall games on Wednesday.

Residence Life coordinators Maria Madigan and Dan Schiesser played the parts of Jenny McCarthy and Chris Hardwick, the hosts of the show. The halls each chose two contestants, one male and one female, for a total of six participants.

All those in the audience were used for the dating pool. Initially, many were reluctant to join in the festivities, but by the second or third contestant the game picked up its pace.

The premise of the game is to allow the contestants, who can't see or be seen by the audience, to choose whom they would like to go on a free date with. The contestants first throw out a few preferences for prospective dates, qualities that the members of the dating pool must have in order to continue. Some categories included height, hair length, clothing style, and eye color. Once the dating pool was narrowed down to five members or less, the real fun began.

The contestants next got to ask the

pool a few questions. These questions could be simple questions, or they could be demands for specific actions. For instance, one contestant demanded that a pool member do a Madonna impression. Others were asked to fake orgasms for 15 seconds. Some of the questions asked were quite simple, such as "Do you prefer mild or spicy?" and "Is it okay for a girl to ask a guy out?" Other questions, however, demanded much more loaded answers: "Do you like ribbed or ultra?" and "Do you spit or swallow?" were some of the crowd favorites.

Prizes for the lucky couples included gift certificates to Pizza Hut, Arby's, and Ponderosa.

Perry Hall Council president Jamie Salapek found the event to be successful. "We [Perry Hall] did it alone last year, and doing it together with the other halls was new, but definitely a success. It will be a good thing to continue."

# Vive Behrend; Study Abroad offers trip to France

by Kathy Perry  
staff writer

For the first time in Behrend history, students will have the opportunity to study abroad in Paris, France, this summer from June 3 to June 30, 2000.

The cost of the trip is approximately \$2,300. This estimated cost includes all expenses except for Penn State summer tuition, meal money, transportation to and from the Pittsburgh airport, books and supplies, and personal expenses. This cost is subject to change, however, due to airline prices and currency fluctuations. There are Study Abroad Scholarship applications available for those who are interested.

Dr. Katherine Willis Wolfe, professor of French, is organizing this particular trip. Wolfe highly regards the benefits that accompany this type of learning experience: "Study abroad broadens one's perspective on the world. It gives a student the chance to see how people live in

another country . . ."

There are three courses available to students participating in this program. Included in the program are French 139: France and the French Speaking World (3 credits); French 201: Oral Communication and Reading Comprehension (4 credits); and French 199: Foreign Study (1-4 credits). The minimum requirement for the trip is the completion of French 002 with a grade of at least a B-.

French 139 will require four days per week of class time, and French 201 will require five days per week. French 199 is being offered primarily for alumni and for students who will be graduating soon and are not in need of credits. During the mornings students will be primarily studying in a more traditional classroom setting. In the afternoons, however, students will have the opportunity to go out into the city and get hands-on linguistic experience.

Some of the featured sights students will get the opportunity to see include Versailles, Chartres Cathedral, a 14<sup>th</sup>

century chateau at Langeais, and, of course, the traditional must-see tourist attractions in the city - the Louvre, the Eiffel Tower, and the Arc de Triomphe.

Those participating in the trip will be staying in the European Center for Protestant Gatherings, a turn-of-the-century building that was recently renovated. Each student will have his or her own single room with a private bathroom. The Center is well situated on the southern end of Paris, and several Metro and bus lines are nearby.

Those interested in this study abroad trip should contact Dr. Wolfe or Ms. Ruth Pflueger, Learning Resource Center coordinator and director of Study Abroad, for an application.

The deadline to sign up for the trip is Friday, February 25, 2000. Admission into the program requires an interview with Dr. Wolfe. Upon acceptance into the program, a non-refundable deposit of \$500 is required.

## HAPPY VALENTINE'S DAY FROM THE BEACON



## VISUALIZE YOUR FUTURE AS A CHIROPRACTIC PHYSICIAN

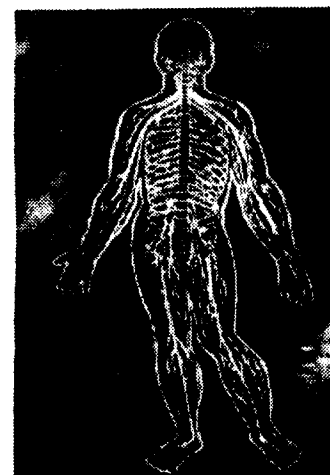
### LOGAN OFFERS:

- Prominent, outstanding faculty.
  - A strong tradition of academic excellence and student success.
  - Modern state-of-the-art facilities.
  - Financial aid to approximately 90% of our students.
  - Hands-on clinical experiences.
- Logan also offers a B.S. in Human Biology and an Accelerated Science Program (ASP).

Prepare for an exciting career in health care.

**LOGAN**  
UNIVERSITY OF WESTERN MICHIGAN

1-800-533-9210  
<http://www.logan.edu>  
1851 Schoeller Rd. • Chesterfield, MO 63017  
Phone: (314) 227-2100 • FAX: (314) 207-2425  
loganadm@logan.edu  
An Equal Opportunity Institution of Higher Education



### Memories continued from front page

here forever. There's just that feeling that when you walk in, it's a great, friendly place to play, with a lot of spirit and tradition behind it."

In the past two seasons, the men's team has a 20-3 record in Erie Hall, including a first round win over Grove City in last year's Eastern Collegiate Athletic Conference Championship run.

Behrend men's basketball coach Dave Niland realizes Erie Hall's advantages saying, "it always has been (a tough place to play)." He added, "Brian Streeter has been able to create a fun atmosphere in Erie Hall. Yeah, it's an older building, but when you think of college basketball, certainly on the east coast, you think of Erie Hall."

Andy Lawrence, who is playing his last season in a Lions uniform, has grown close to the tradition and mystique of Erie Hall after his five years at Behrend. "I just love the place. I know it's small, and people think it wouldn't be that fun to play in, but it's home court advantage. You get up close and personal with all the people, and I just think it's a great place to play."

Like any gym, Erie Hall has its differences and advantages that Behrend players can adjust to that opponents might not be able to.

Lawrence said, "the rim closest to the doors down there - that's what we always call the shooter's rim, because you always get the Behrend rolls down there. That's been that way since our freshman year."

Lawrence added that a distinction Erie Hall has is that "it's freezing. It's always cold in there until game time, then it's hot. Day games, with the windows, get the light on the floor. That makes it tough on both ends."

Last season, both the men's and women's basketball teams hosted the Allegheny Mountain Collegiate Conference Championships in Erie Hall with the men's team losing a heartbreaker to La Roche and the women's team taking the title against Pitt-Bradford. Both the men and women's teams have a good shot at hosting the tournament again, with both teams unbeaten in conference play so far this season.

"Hopefully we'll host the conference tournament, get a couple of wins and end it on a win. That's what I'd like to do. End my career on a win, and end the gym on a win. So it'll be fun," said Lawrence.

Behrend alumnus Joe Benacci, a member of the 1955-56 Behrend basketball teams sees how far Erie Hall has come since his playing days. "It

(Erie Hall) was smaller than it is now. There wasn't as much activities as there are now. It has come a long way."

Streeter concluded, "There's so many things that this facility brings, but the tightness of the whole place is probably the best thing. You've got an old facility that has served the college for 48 years, and it's still serving it right now. And it will, it's never going to end. Erie Hall will still have a unique part of student recreational life on campus."

The building will continue to serve as an important recreational center on campus, but its tradition as the home of the Lions will end. On February 16, the Behrend men and women will host Pitt-Greensburg in the last regular season game in Erie Hall. The games will be part of Fan Appreciation Night and Senior Night. Plans are also being worked on for the games to be televised. If the Lions win the regular season season AMCC title, they will host the conference tournament on February 25 and 26.

"The End of an Era" could come with two AMCC Championships and a weekend full of moments to remember for all Behrend students who attend.

### Valentine's Day continued from front page

The RUB Desk has been one of the few organizations getting involved in the spirit of love, offering balloons and candy for a cheap price. Some students from the Behrend

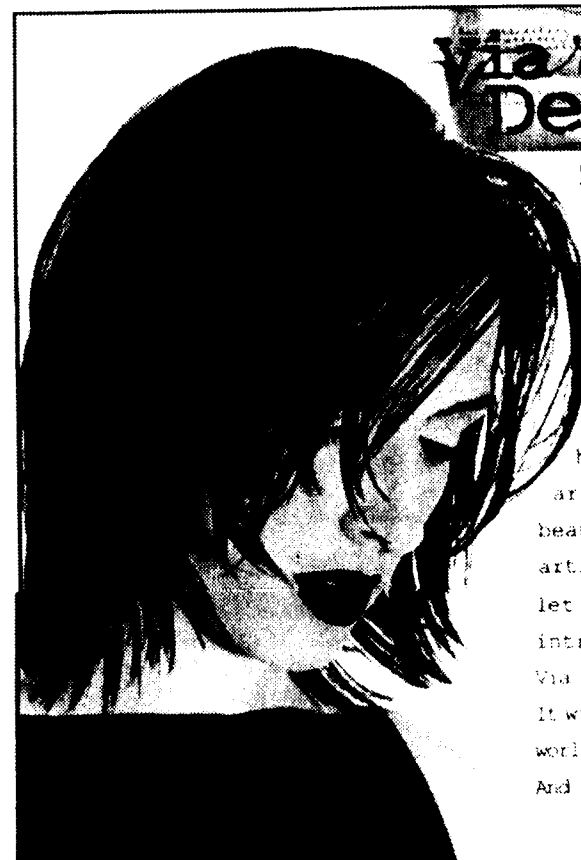
organization Reality Check will be going out to the Brevillier Village Retirement Community on East Lake Road in Harborcreek to pass out Valentines to the elderly. The

students will make their trip on Saturday, February 12.

Comments or suggestions can be given to the Students Activities Office at 898-6171.

## TOTAL E-CLIPS

YOUR FAMILY'S FAVORITE HAIRCUTTERS



STYLE WITH IMAGINATION

It's products that are versatile, different and give you creative control over your hair. It's styles that are inspirational, beautiful, even artistic. Come in and let our stylists introduce you to Via Design. It will change how the world looks at hair. And you.

### M A T R I X

**\$2.00 OFF**  
ANY  
REGULAR PRICED  
ADULT OR CHILD  
HAIRCUT  
Starting at \$8.95

P01F Expires 3/4/00 P01N  
Not valid with other offers.

**\$5.00 OFF**  
ANY  
MATRIX PERM  
Starting at \$43.95  
INCLUDES CUT & STYLE

P02F Expires 3/4/00 P02N  
Not valid with other offers.

**\$10.00 OFF**  
ANY  
MATRIX PERM  
AND COLOR  
Starting at \$58.95  
INCLUDES CUT & STYLE

P03F Expires 3/4/00 P03N  
Not valid with other offers.

We have Erie's only Matrix certified color and perming specialists. We specialize in corrective perming and coloring. Make your appointment today!

HOURS: MONDAY - FRIDAY 8:30 - 8:00 SATURDAY 8:30 - 5:00

SUMMIT PLAZA  
5025 PEACH STREET - 868-1322

MANOR PLAZA  
2119 W. 8TH STREET - 456-5755