

CALENDAR

Calendar of Events

17 Fri

- LEB Movie: Shakespeare In Love Reed 117- 10 p.m.
- IM Deadline: Chess and Backgammon Tournaments
- Bruno's: Karaoke- 8 p.m.

18 Sat

- LEB Movie: Shakespeare In Love Reed 117- 10 p.m.
- PSB Cross Country Invt.- 11a.m.
- Tennis (W)- Penn State Behrend Invt.- 9 a.m.

19 Sun

- LEB Movie: Shakespeare In Love Reed 117- 9 p.m.
- Sunday Mass- 8 p.m., Reed Commons

20 Mon

21 Tues

- Logan Series: Manhattan Wind Quintet- Reed Wintergarden- Noon
- RA Interest Meeting- Niagara

22 Wed

- RA Interest Meeting- Lawrence

23 Thurs

- LEB Movie: The General's Daughter Reed 117- 9p.m.
- PSB Golf Tourn.(M)- 11a.m.
- V-ball (W) vs. Lake Erie- 7 p.m.

24 Fri

- LEB Movie: The General's Daughter- Reed 117- 10 p.m.
- Soccer (W) vs. Fredonia- 4 p.m.
- Fall Festival/Parents and Families Weekend

All submissions for the calendar should be made available to the Beacon by 5:00 p.m. on the Monday before publication.

Please send via inter-office mail to the Beacon Calendar Editor, drop it off at the Beacon office, or send it to BEHRCOLL3@aol.com.

The Beacon cannot guarantee publication of events due to space constraints. The Beacon also reserves the right to edit any material submitted for publication. The calendar is intended for Behrend notices and events.

Events

FALL FESTIVAL

Fall Festival presents a Swing dinner and dance on Saturday, September 25th. Dinner is from 6:30 p.m.-7:30 p.m. and dancing is from 7:30pm-11:00pm. Students can use their meal cards. Sign up in the Office of Student Activities. Free dance lessons!

MUSIC AT NOON: THE LOGAN WINTERGARDEN SERIES

Manhattan Wind Quintet, Tuesday, September 21st, Noon.

Enthusiastic advocates of contemporary chamber, the Manhattan Wind Quintet is widely respected throughout the United States and Europe for its distinctive performances. The group's technical polish and strong empathy for style has earned it such celebrated prizes as the Coleman International Chamber Music Competition and the Young Artist Peninsula Festival Chamber Music Prize.

All performances are held at the Reed Union Building Wintergarden. Audiences are invited to bring a brown bag lunch. Admission is free.

ASTRONOMY SERIES BEGINS

Dr. James Kasting, Professor of Geosciences and Meteorology at Penn State University Park, will open the 1999/2000 Open House Nights in Astronomy series at Behrend with "Searching for Life on Planets Around Other Stars." His lecture, which is free and open to the public is on Thursday, September 23rd at 7:30 p.m. in the Otto Behrend Science Building Lecture Hall.

Kasting, who is also a member of the Earth System Science Center's faculty, reports that within the past three years, planets have been discovered around at least 15 stars. The planets found so far are Jupiter-sized or larger, but most astronomers are confident that the Earth-sized planets exist too, they just can't be seen yet. Within the next 12-15 years it may become possible to do so. Kasting's research interests include the evolution of the Earth's atmosphere and of planetary atmospheres, atmospheric chemistry, interactions between the carbon cycle and climate, and the origin of life.

Astronomical observation will follow the lecture, weather permitting. For more information call the School of Science at 898-6105.

B.R.U.N.O.S.

Saturday, September 25th, at 6 and 8 p.m. and Sunday, September 26th at 2:30 p.m.

First presented in April 1999, this musical review about college life at Penn State Behrend was a complete sell-out. All of the Matchbox Players will return to bring the College's first original musical back to life. Get your reservations early!

For Studio Theatre reservations and ticket information call 898-6016.

WALK TO CURE DIABETES

Diabetes kills an American every three minutes and you can help find a cure for this disease by joining the Penn State Behrend Team Walk to Cure Diabetes. It is a 5K walk held at Presque Isle on Sunday, September 19th and transportation is provided. Sign up in the Office of Student Activities or call 898-6171 for more information.

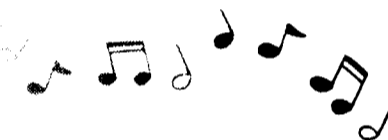
THE TENTH ANNIVERSARY SEASON OF
THE LOGAN WINTERGARDEN SERIES
1999-2000

Music at Noon

MANHATTAN WIND QUINTET
TUESDAY, SEPTEMBER 21

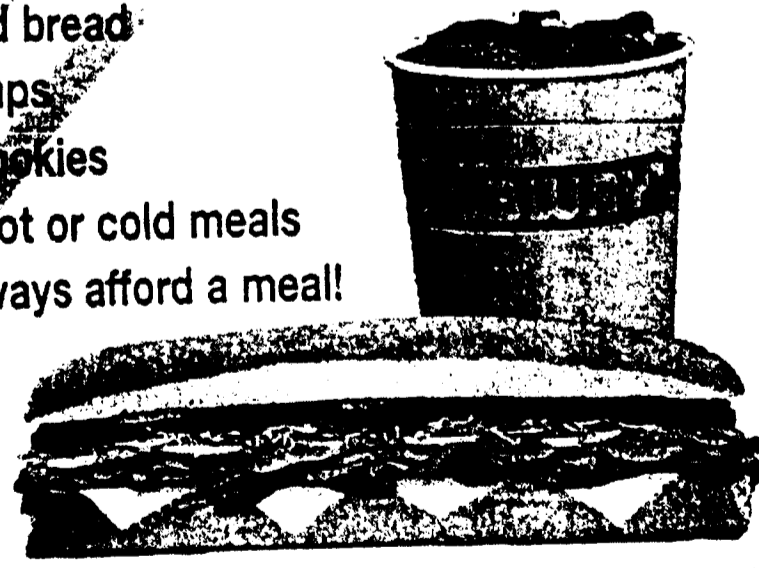


Bring your lunch to the Penn State Behrend Wintergarden and enjoy world-class performances in an informal setting. Admission is free.



Top 10 Reasons to Eat SUBWAY® Meals

- 1: Subs made fresh before your eyes
- 2: Nothing fried, nothing greasy
- 3: Convenient locations
- 4: FREE veggies & toppings
- 5: Great taste
- 6: Fresh baked bread
- 7: No heat lamps
- 8: Delicious cookies
- 9: Choice of hot or cold meals
- 10: You can always afford a meal!



SUBWAY

ANY FOOTLONG SUB OR SALAD **\$1.00 OFF** ANY FOOTLONG SUB OR SALAD

K-Mart Plaza

SUBWAY

Offer Expires 10/17/99

not good with any other offer

Event of the Week:

**Behrend Athletics
on Saturday,
September 18**

**Tennis - 9:00 a.m.
Cross Country - 11:00
a.m.**

What a great opportunity to watch the Behrend Lions in action. The Lions will host the 1999 Cross Country Invitational, preceded by the Women's Tennis Invitational. Both events will take place in the same area, so don't miss it!