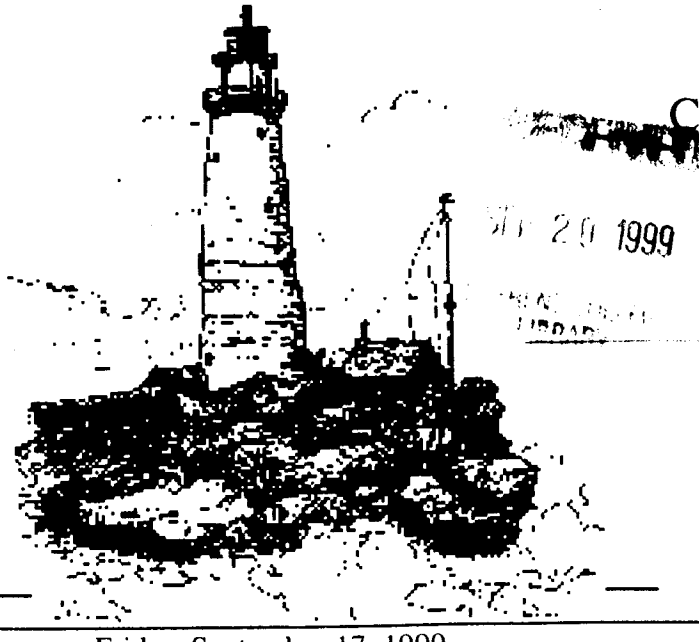
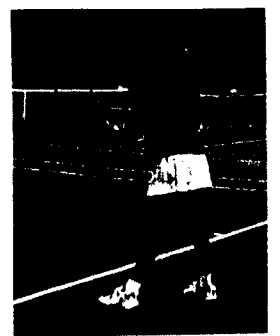


Erie's hot spots



Tennis and Cross Country highlight Saturday events



BEHREND

BEACON

Vol. XLVIII No. 4

14 pages

Friday, September 17, 1999

A Penn State Erie Student Publication

Knowledge Park's growth benefits Behrend

by Michael Frawley
managing editor

Knowledge Park has continued its development over this past summer. It now contains two tenants, Aalborg Industries and the GE e-commerce team, with more groups looking into becoming part of Knowledge Park. After opening this past January, Knowledge Park has been attracting interest from many groups, and the school is preparing for further expansion.

Knowledge Park is a research and development program on the Penn State Behrend campus. It was created to enable knowledge based organizations to be able to locate closer to the school and allow them to take better advantage of the College's intellectual and physical resources. The organizations that are based in Knowledge Park will be closely linked to Penn State Behrend's technology transfer, applied research, and education and outreach services in order to accelerate competitive advantages for the organizations and help create greater regional economic development.

Knowledge Park was created to benefit the campus and also the community as a whole. It will enable students at Behrend to perform internships with the companies that are working in Knowledge Park, creating new educational experience for students. Employees of Knowledge Park will also be able to conduct classes for students dealing with the work that their company performs. The organizations will also benefit from being located in Knowledge Park. They will have access to graduate students, education, and training and support programs connected with the school. Telecommunications and distance education programs will also be available to the organizations at Knowl-



PHOTO BY JEFFREY MILLER

The Aalborg Industries were the first partners in the Knowledge Park program at Penn State Behrend. The building is located left of the entrance to Knowledge Park.

edge Park.

Dr. Robert Light, Associate Provost and Dean, commented, "the park will promote the expansion of jobs related to research and development, marketing and other knowledge-based areas. These are high-paying jobs that currently aren't being developed in the area. We hope that the Park would also lead to the creation of new companies and the spin-off of companies for the area. Students will benefit from increased opportunities for internships, coops, part and full time employment, senior research projects and scholarships. We already have developed internship and scholarship programs with the first tenant in the Park."

The first tenant of Knowledge Park was Aalborg Industries, which now occupies 40,000 square feet of the 70,000 square feet currently available in the Park. Aalborg Industries designs and markets steam boilers and generators. The company, which is based in Erie, was recently purchased by a Danish firm.

The second tenant for Knowledge

Park will be an e-commerce team from General Electric Transportation Systems (GETS). Over the summer John G. Rice, the president and CEO of GE Transportation Systems, announced that this newly created team of 20 e-commerce personnel will locate at the Park because of the opportunities available to them by being based there. GETS is looking to double the number of people involved on the team in the coming year. The e-commerce team will occupy 13,000 square feet of Knowledge Park.

The e-commerce team will be producing Web pages for GETS. These pages will allow GETS to track information about their locomotive fleet, including ordering parts and scheduling maintenance for the locomotives. Mr. Rice said, "the opportunity to locate our development team side by side with people who are researching and developing information based technologies gives us access to the latest thinking in Internet services." The GETS e-commerce team will provide internships and avenues for student and faculty research.

Penn State Behrend and GEIDC, the Greater Erie Industrial Development Corporation, are the two lead organizations behind the formation and development of Knowledge Park. GEIDC is a Pennsylvania non-profit industrial development organization. Its mission is to create new net wealth in Erie County. It accomplishes its mission through the creation and management of industrial parks. GEIDC currently manages seven industrial parks in Erie County: J. Robert Baldwin Business Park, Thomas E. Bundy Industrial Park, Erie Industrial Park, Michael J. Veshecco Industrial Park, Albion/Cranesville Industrial Park, East 12th Street Industrial Park, and Fairview Business Park. Together, these parks represent over 500 acres of land earmarked for industrial development.

Knowledge Park is located on the southern part of campus, occupying a mile long stretch of land on the north side of Interstate 90. This area of land contains almost 200 acres for use by Knowledge Park. This location makes it very inviting for area busi-

nesses because of its convenient location. It is less than 25 minutes from Erie International Airport, and it is within a five minute drive from the end of the Southern Tier Expressway, also known locally as Route 17, which is a direct link to New York City. The Park has over twenty, four-acre sites available for expansion. Each site is fully serviced by utilities, and is ready for construction to take place.

Tenants for Knowledge Park will include organizations who will form strong ties with Behrend. The goal is to relate the organizations to the school in areas such as the use of science, engineering, and business practices to promote the development and improvement of products and processes. Due to the long tradition and heavy concentration of manufacturing in the region, Behrend has a strong commitment to serving the needs of this important sector, providing education, research and technology transfer services help support the industrial base of county.

Engineering search continues

by Shannon Weber
news editor

The search for a new Director of the School of Engineering and Engineering Technology (SEET) is in its final stages. The search started last fall and SEET hopes to have a new director for the spring semester. The search for a new director was brought about because the current director, Dr. Richard Progelhof, is retiring.

There have been four candidates that have been interviewed for this position. Each candidate was brought to Erie to attend two-day interviews.

"We hope to conclude the search during the fall semester so that the new director can be in place at the beginning of the spring semester when the current director, Dr. Progelhof, will be retiring," stated Dr. Jack Young, Associate Professor of Mechanical Engineering.

Provost and Dean, Dr. John Lilley established a research committee, which consisted of faculty members from SEET. The school advertised nationally in a variety of publications, created a website, wrote and called many engineering schools, and a search firm helped the school identify candidates in this competitive market. The school is looking for someone that shares its views such as, quality undergraduate education, and faculty research, student involvement in undergraduate research and technology transfer via applied research and industrial partnerships.

"The search committee, chaired by Dr. Jack Young, has worked very hard on this search, and I am grateful for their dedication to the task," stated Dr. Lilley.

The director would be working with the faculty and administration to develop further the school's vision, academic strategy, operating policies and facility plans. They would also be responsible for working with the faculty on curricular changes and the development of new programs along with a variety of other duties.

Search continued on page 2

BEACON GOES COLOR...

The past few weeks, the *Behrend Beacon* has begun a series of changes to the appearance of the newspaper in hopes of catching the attention of our readers. This week, we have finally reached our goal. The *Beacon*, for the first time in history, is featuring color photos on the front page. With help from numerous sources, especially our printers *The Corry Journal*, this has been made possible.

Although this change is the most obvious, the *Beacon* has made numerous other changes to improve the overall quality of the paper. Changes such as the weather outlook, the index, a new design to the front page, wire service articles from around the world, horoscopes, advertisements helpful to students, and new features such as "Event of the Week," and "Student Club of the Week" have all brought us closer to our goal of putting out a newspaper that the entire Penn State Behrend community can be proud of.

Our work, however, is not complete. We soon hope to be a member of the Associated Press. This will help expand our coverage to areas around the world, providing more photos for the delight of our readers.

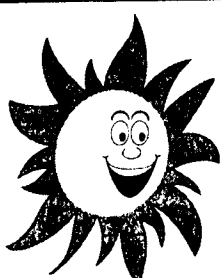
The changes will keep coming, so please be patient with us as we continue to attempt to provide you with a perfect publication. One that will catch your eye and keep you informed. Thank You!



Provost and Dean Dr. John Lilley stands in front of Ohio Hall during the dedication this past Sunday, September 12.

PHOTO BY KEVIN BRUNER

WEEKEND WEATHER OUTLOOK



See page 2 for full weekend forecast.

THE BEHREND BEACON INDEX

NEWS..... PAGE 1
POLICE AND SAFETY..... PAGE 2
SGA ELECTIONS..... PAGE 3
EDITORIAL..... PAGE 4

CALENDAR..... PAGE 5
WIRE SERVICE..... PAGE 6
FEATURES..... PAGE 8
SPORTS..... PAGE 11

