



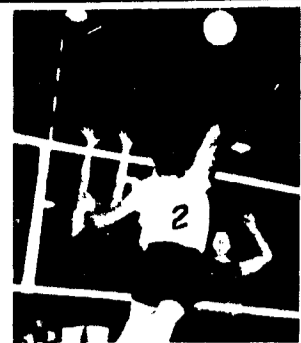
Summer humor
in Hollywood

PAGE 7



Erie Hall hosts
busy night

PAGE 10



BEHREND

BEACON

Vol. XLVIII No. 3

12 pages

Friday, September 10, 1999

A Penn State Erie Student Publication

Behrend slows down expansion *Improvement is main priority for near future*

by Jason Snyder
and Raechel Kiska
editor-in-chief and staff writer

The expansion at Penn State Behrend over the past few years has been increasing drastically through the growth in the enrollment and facilities on campus. Behrend has many plans on continuing the expansion in the future, but realizes that the campus cannot grow anymore right now.

"We have an exciting future. It's a challenge, but we're headed in the right direction," said Provost and Dean Dr. John Lilley.

"We, in the very near term, cannot grow anymore. We grew really to our capacity right now," said Dr. Jack Burke, Senior Associate Provost and Senior Associate Dean. "The main thing I want to do, is get better," he added.

In the area of improvement, Behrend is in the process of focusing on the computers on campus and their availability to students. Improvements on the computers have already taken place with the lab in the downstairs library being doubled. Also, another kiosk for computers has been constructed in the downstairs of the Academic Building, in addition to the kiosk placed in the Reed Union Building last year.

In addition to computer needs, Behrend will be working on making the campus more handicap accessible. Tentative plans include an elevator that will replace the existing stair tower, connecting the suites and other residence halls to the rest of campus.

The most recent and ongoing expansion on campus involves the Athletic Recreation Center (ARC) across Jordan Road. Groundbreaking for the facility took place last month.

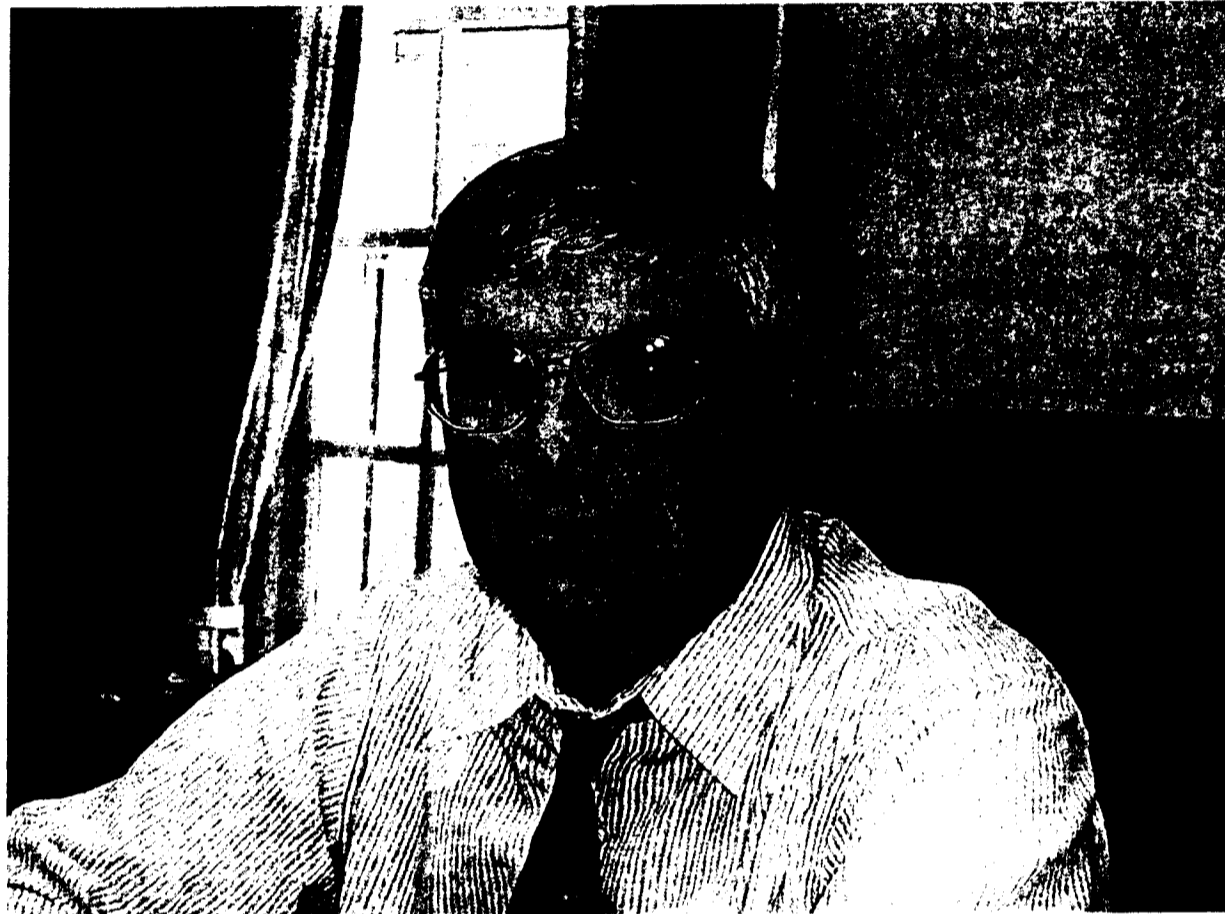
ARC will consist of three full-size gyms, a running track, an eight-lane pool, a nautilus center and a fitness room. "It's going to be a really nice facility," commented Dr. Burke. The construction of the complex is expected to be completed in 14 months, dating until October 2000.

In addition to ARC, Behrend has begun another project across Jordan Road with the construction of the Chapel and Bell Tower, a gift for the Behrend community.

The expansion of Knowledge Park is also a high priority for Behrend in the upcoming years. Behrend will use the rent from the partners currently occupying the Park to build new shells for future partners. The more businesses occupying those shells, the more opportunities for students to get internships and job opportunities. However, Dr. Lilley realizes, "students don't always walk up there and appreciate it."

Aside from the current expansion taking place on campus right now, Behrend is putting the finishing touches on the planning for the Research and Economic Development Center (REDC). REDC will give Behrend many opportunities for improvement in many different areas of the campus.

REDC will be a large building, also built across Jordan Road, that will house the School of Business and give more space for the School of Engineering. The building will move the School of Business out of temporary trailers all over campus and will enhance some of Behrend's engineering technology.



Dr. Jack Burke, Senior Associate Provost and Senior Associate Dean

photo by Jeffrey Miller

REDC will also help Behrend fine-tune other aspects of the college, including the quality of classrooms and the overall appearance of the campus, which will benefit from the removal of the temporary trailers.

"This is a building that the University says we need," said Dr. Burke. Once the final plans for the REDC are completed, Behrend will have between three and four years to work on "getting better." Dr. Burke realizes, "we

have a lot of catching up to do."

Currently, Behrend enrolls just over 3,700 students which is up from last year's 3,500. This is positive growth for Behrend, but does cause some tight space on campus. "That's just about as big as we can get. We face a major space crunch right now," Dr. Burke added, "we're going to have to control the enrollments to keep it at the level they are right now, until we can get some more space." Behrend is currently working with an architect to plan on expanding Perry Hall.

The purpose for this growth in Behrend enrollment, is to help control the enrollment of University Park. Dr. Burke said, "they want us to cap the size of University Park, and Behrend would help that happen by taking up some of the slag of juniors and seniors." This school year has started that process, with the 200-plus students that transferred to Behrend. The freshman class did not grow any larger than last year's, which shows that the Behrend growth is mainly juniors and seniors.

The cost for all the expansion on campus comes from many sources. One possible future source for that funding could come from the money Behrend will receive because of the highway being built through campus. The highway will go alongside the new playing fields, past the Logan House, through the current women's softball field, through the front gate and run along the other side of Station Road. Dr. Burke sees the benefits of this in regards to the commercial activity and convenience to students' travel. However, the construction, noise, appearance and overall safety of the highway are in question.

In order for the highway to run through campus, Behrend should be funded for the land that is needed to make that happen.

Other funding comes from private money, made through fundraisers and other campus events. Dr. Burke concluded, "we have a lot of the buildings built here through private money that we raised. We want to put more of that into scholarships to help students and endowments for students, and less into bricks and mortar. Let the bricks and mortar come from other sources."

Career Development Center has many resources for students



Mary Beth Peterson, Director of the Career Development Center

by Karen McKim
staff writer

The Career Development Center at Behrend holds many resources for its students and alumni. Some of these resources include career fairs, classes, and individual counseling. Many people may not be aware of the opportunities offered at the center. The following activities have been organized by the Career Development Center.

The Second Annual Behrend Business, Humanities and Science Career Fair will be held on October 5 from 12:00 noon until 5:00 p.m. in the Reed Commons. Mary Beth Peterson, director of the Career Development Center, promises that the career fair will, "bring information regarding the many employment opportunities in the world of business, social service, and science," to students. The fair is also designed to make organizations familiar with students and the oppor-

tunities available at Behrend. Sixty different companies will be in attendance at the career fair including the FBI, Sprint, and IBM. All students are welcomed to attend. Underclassmen may be recruited for internship opportunities. Companies will attempt to interest students by an array of displays and products.

On Thursday, October 14, the Tenth Annual Behrend Engineering Career Fair will be held in the Engineering Building. All engineering students from freshmen to seniors are welcomed to attend. For more information on these career fairs, log on to www.pserie.psu.edu/career/jobfair.htm. This page offers a complete list of the companies who will be in attendance.

A number of career-related events are also taking place at University Park this fall. The Multicultural Career Awareness Day is Thursday, September 23. The event will be held at University Park. On September 28, University Park is hosting the Smeal College of Business Career Fair. The Engineering and Science Career Fair on Thursday, September 30, will also be held at University Park. If you are interested in attending any of these events, transportation will be provided from Behrend. Contact the Career Development Center (CDC) for

more information.

Aside from the organization of various fairs, individual career counseling is also available through the CDC. This service helps with anything from choosing a major to making career plans. Appointments may be scheduled to discuss skills, and tests can be administered. Another form of counseling offered at the CDC is internship counseling. Internship possibilities can be investigated in a variety of geographic regions selected by the student. A job search class is also provided by the CDC. This is a one credit class which meets once a week. Topics discussed include: job searching, interviewing, resume writing, cover letter writing, and many other useful skills. Other helpful items extended by the CDC are the on-campus recruitment program, job announcements, resume files, video interviewing, workshops, and a number of informational web sites.

For more information about the CDC visit their web site at www.pserie.psu.edu/career/cdcindx.htm or make your own Career Development appointment by calling 898-6164.

Dr. Porac plans changes for Humanities and Social Sciences

by Shannon Weber
news editor

The new Director of Humanities and Social Sciences, Dr. Clare Porac, began her position at Behrend this past summer. When she was asked how she liked Behrend, Dr. Porac responded by saying, "I like it a lot. The people were very welcoming and it is such a beautiful campus."

Some of the major changes that Dr. Porac is working on include trying to upgrade computers for faculty and allowing them all to have Internet access. She also hopes to advertise activities in the School of Humanities and Social Sciences along with raising the profile of that school.

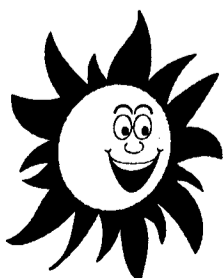
"I want to have more advertising of the activities available in the school of Humanities and Social Sciences to inform the students of the opportunities available," stated Dr. Porac.

Recently, the School of Humanities and Social Sciences issued a letter to selected students that are undecided about a major or minor, but interested in the liberal arts or social sciences. The faculty and student majors from the School of Humanities and Social Sciences will be present to talk to the prospective students about the majors, minors and other programs.

Plans for the future of the school include an Institute of the Study of the American Dream and more activities with the Center for Organizational Research and Evaluation (C.O.R.E.).

Dr. Porac also commented on working with the students on a more personal level. "I would certainly like to be back in the classroom. The students here at Behrend are very nice and pleasant to work with. I am looking forward to getting to know the students better."

WEEKEND WEATHER OUTLOOK



See page 2 for full weekend forecast.

THE BEHREND BEACON INDEX

NEWS.....	PAGE 1	WORLD AND NATION.....	PAGE 5
POLICE AND SAFETY.....	PAGE 2	NATIONAL CAMPUS NEWS.....	PAGE 6
CALENDAR.....	PAGE 3	FEATURES.....	PAGE 7
EDITORIAL.....	PAGE 4	SPORTS.....	PAGE 10

