

Calendar of Events

24^{Thurs}

Astronomy Open House - 7:30p.m. - Otto Behrend Science Building
SPC Movie: "The Truman Show" - 10p.m.

25^{Fri}

Mini Concert: Push - 8p.m.
SPC Movie: "Truman Show"-10p.m.

26^{Sat}

Bruno's: Tom Cotter, Comedian - 8:30p.m.
IM: Golf Tournament
SPC Movie: "Truman Show"- 10p.m.

27^{Sun}

Catholic Mass - 8p.m. Reed Commons
SPC Movie: "Truman Show" - 9p.m.

28^{Mon}

International Film Series - 7:30p.m., Reed 117

Third Annual Date Auction. Hosted by Alpha Sigma Alpha - 9p.m., Reed Commons

29^{Tues}

Logan Series: Quartette Indigo - 12p.m., Wintergarden

Tennis (W) vs. Grove City - 3p.m.
Volleyball vs. Lake Erie - 7p.m.

30^{Wed}

Soccer (M&W) vs. Pitt-Bradford - 2p.m./4:30p.m.

1^{Thurs}

SPC Movie: "Armageddon" - 10p.m.

All submissions for the calendar should be made available to the Beacon by 5:00pm on the Monday before publication.

Please send via inter-office mail to the Beacon Calendar Editor, drop it off at the Beacon office, or send it to BEHRCOLL3@aol.com.

The Beacon cannot guarantee publication of events due to space constraints. The Beacon also reserves the right to edit any material submitted for publication. The calendar is intended for Behrend notices and events.

Events

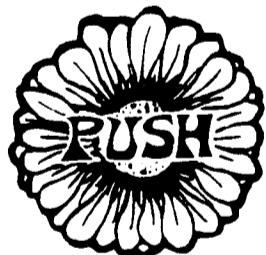
Behrend Astronomy Series Opens with "Oceans On Europa". The 1998-99 Open House Nights in Astronomy Series will begin Thursday, Sept. 24, at 7:30 p.m. with an exploration of Jupiter's icy moon, Europa. Dr. Roger Knacke, professor of physics and director of the School of Science, will present a lecture summarizing the results of the NASA Galileo Europa Mission (GEM). Open House Nights in Astronomy, which takes place in the Otto Behrend Science Lecture Hall, are free and open to the public. Astronomical observing will take place following the lectures, weather permitting. For more information, contact the School of Science at 898-6105.

The Office of Catholic Campus Ministry would like to invite anyone who is interested in attending to their weekly Catholic Mass. Mass takes place in the Reed Commons every Sunday and begins at 8:00 p.m. All are welcome to attend.

QUARTETTE INDIGO will open the ninth season of Music at Noon: The Logan Wintergarden Series. Jazz fans and chamber music fans alike will be drawn to the performance by Quartette Indigo at Penn State Erie,

The Behrend College. Set for noon on Tuesday, Sept. 29, the ensemble, which is billed as "jazz's leading string quartet," will open the season with sassy, sweet, and spicy melodies. Cellist and native New Yorker Akua Dixon Turre put the group together twenty-five years ago in order to "make people enjoy the music and be able to pop their fingers." Turre's sister, Gayle Dixon, on first violin, John Blake on second violin, and Ron Lawrence on viola round out the quartet, but each member is a talented musician who also excels in strong solo performances as well. The group's repertoire ranges from Scott Joplin's "Rag Time Dance" to Duke Ellington's "Come Sunday" and works by John Coltrane and Theolonious Monk. Quartette Indigo is distinguished from other string quartets by its improvisatory skill and its ability to cross the arbitrary boundary between spiritual and secular music. Although its members employ classical technique, audiences can expect to "pop their fingers." The Logan Series at Penn State Erie brings world-class musicians to the College to perform in an informal setting. Performances are free and open to the public, and because the performances are at noon, guests are invited to bring a brown-bag lunch. The series is made possible through a grant from the Harry A. Logan, Jr. Foundation. For more information, please contact the Penn State Erie Office of Student Activities at (814) 898-6171.

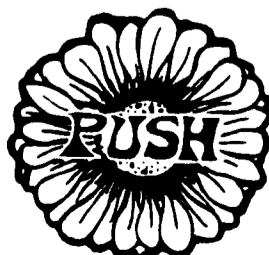
The 1998-99 International Film Series at Penn State Erie, The Behrend College, opens Monday, September 28, at 7:00pm with the film *El Maestro de Esgrima* (The Fencing Instructor). Directed by Pedro Olea, this 1992 Spanish film is based on a contemporary best-selling novel by Perez Reverte. The film is set in pre-Revolutionary Spain. Its main character, Don Jaime Astarloa, known as the best swordsman in Madrid, finds an unlikely companion in his quest to change the customs and social values of his country. The film examines the complex layers of historical, political and personal relationships that unfold when Don Jaime Astarloa teaches the mysterious Adela de Otero the tricks of his deadly art. The International Film Series continues on a weekly basis with *Azucar Amarga*, which will be shown on Monday, October 5; *La Ceremonie*, showing Monday, October 12; *Wings of Desire* on Monday, October 19; and *Amantes*, which will be shown on Monday, October 26. The International film Series is funded by the Mary Behrend Cultural Fund and the School of Humanities and Social Sciences. The series, which is free and open to the public, will be shown in the Reed Union Building Lecture Hall. For more information, please call the Penn State Behrend School of Humanities and Social Sciences at 898-6108.



Appearing Live:
"Push"

Sept. 25, 1998
Reed Front Lawn
9:00 p.m.

Rain site: Reed Commons



SGA Supplemental Budget Allocation Proposals

1998 Student Government Association Supplemental Budget Allocations
Total allocated \$15,003.00

Association of Black Collegians
Total Allocated: \$800.00

Accounting Club
Total Allocated: \$25.00

Accounting Club and Society of Undergraduate Economists
Total allocated: \$0.00

BAACHUS
Total allocated: \$25.00

The Behrend Beacon
Total Allocated: \$295.00

Commuter Council
Total Allocated: \$65.00

BACCHUS, SPC, Commuter Council, ODK, MCC, JRC, Lion Ambassadors, Alpha Sigma Tau, Theta Phi Alpha, Alpha Sigma Alpha, and Panhellenic Co-sponsorship
Total Allocated: \$200.00

Kappa Delta Pi
Total Allocated: \$344.00

Lion Ambassadors
Total Allocated: \$760.00

Matchbox Players
Total Allocated: \$1070.00

Organization of Latin American Students
Total Allocated: \$2196.00

InterVarsity Christian Fellowship
Total Allocated: \$0.00

Psi Chi
Total Allocated: \$315.00

Ski Club
Total Allocated: \$315.00

Society of Human Resource Management
Total Allocated: \$10.00

Student Government Association
Total Allocated: \$2400.00

Student Programming Council
Total Allocated: \$5000.00

Tau Kappa Epsilon:
Total Allocated: \$0.00

Tempus:
Total Allocated: \$850.00