

## Women post two ties in overtime

By Matt Buser  
staff writer

The Behrend women's soccer team overcame slow starts against two quality opponents this past week. The team finished in a 2-2 tie against Oberlin on Saturday, and then posted the same score on Tuesday when they hosted Keuka College.

Against Oberlin on Saturday, "We got off to a slow start, but we finished strong," said Assistant Coach Melissa Eging. "We dominated in the second half and overtime, but just couldn't find the net for the win." The 2-2 tie brought the women's record to 3-0-1 in the season.

Tuesday again saw the women finishing strong in a physical 2-2 draw

**We dominated in the second half and overtime, but just couldn't find the net for the win**

*Assistant Coach Melissa Eging*

against Keuka. Michelle Finch got the scoring started early on a free kick, but Keuka answered with goals right before and soon after halftime to take a 2-1 lead. With just five minutes left

in regulation, Bethany Cummings scored on a nice pass by Laura Ferko. In overtime, Behrend outplayed Keuka, but again couldn't find the net, and settled for a tie.

"It is frustrating, because we have high expectations this year, and are not happy with a tie, even against a team like Keuka," Assistant Coach Eging said. "We have to work on finishing to swing opportunities we have created for ourselves."

The Behrend women's soccer team plays host to Lake Erie on Saturday September 19 at 3:30, and to Mount Union on Sunday September 20 at 3:00. The team travels to Fredonia on Wednesday, September 23.

## New playing fields almost complete

By Shannon Weber  
staff writer

The new intramural fields west of the Erie hall parking lot will finally be available to the students. They were started in May of 1997 and due to a dry spell were not completed in the spring of 1998 as expected. The playing fields are anticipated to be in use for the spring of 1999. The use of the new playing fields will be open to all students.

The main reason for the construction of the new fields was space. The fields the students use now are not big enough. The new fields will allow more flexibility to the students, coaches and physical education in-

structors. The physical education golf classes will be provided with a new golf putting range and new driving green. There are a few minor changes to the range and driving green. There are plans to put in a new waterline to allow water fountains to the new fields. Lights are being set up for the new fields. This will allow coaches to set up later practices for those students in later classes.

With more space provided, the intramural program will benefit greatly. The intramural teams that are most impacted by this are slow pitch softball, flag football, fast pitch softball and soccer. The new fields and lights will cause the games for these teams to double. The construction of these fields will aid in providing intramurals

with a much better experience.

In addition to the new fields much more construction is being done on campus. A bridge is being built over Trout Run. The new bridge will arrive October 6, 1998. It will allow students access to the new fields and provide students a walk way to Logan House. The path will branch off to allow access to the barn, that is also being restored. It is expected to take three days to build, but will still need finishing. There will be lights that follow the walkway. The completion date for the waterline, golf putting green, and driving range is November 23, 1998.

# Scoreboard

Date	Opponent	Result
<b>Women's Soccer</b>		
September 12	Oberlin	T 1-1
September 15	Keuka	T 2-2
<b>Men's Soccer</b>		
September 12	Oberlin	W 3-0
<b>Cross Country</b>		
September 12	@ Thiel Invitational	Men - 1st place Women - Inc. Brian Gaines - 25:32.0 Keri Lowman - 26:03.0
<b>Volleyball</b>		
September 11-12	@ Allegheny Invitational	Mount Union L 9-15, 3-15, 3-15 Geneseo L 4-15, 9-15, 9-15 Fredonia L 10-15, 6-15, 15-6, 17-15, 11-15 Allegheny L 14-16, 9-15, 6-15

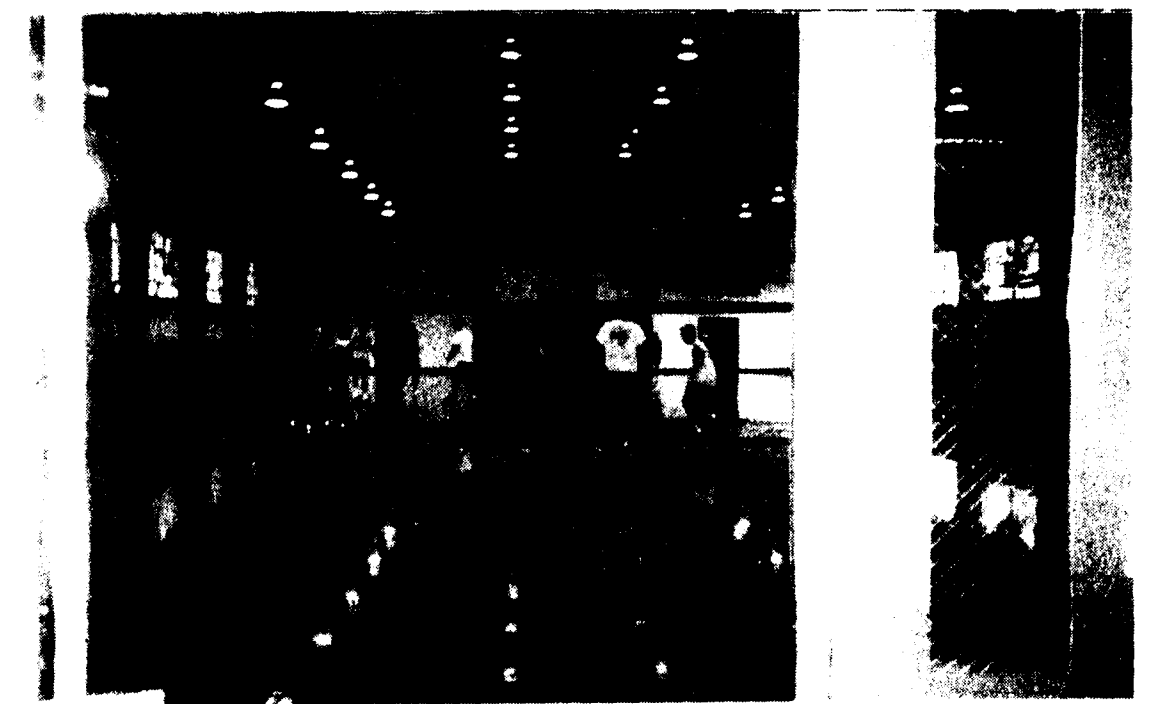
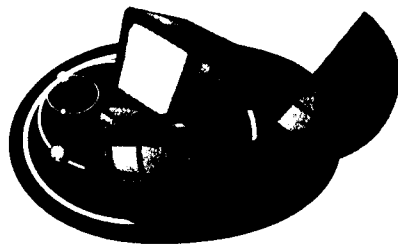


photo by Andrea Zaffino

Students play a pick-up game in Erie Hall.

## HEY YOU!

Got a favorite newsgroup?  
Know a cool website?



Let us know about it for the  
Beacon's upcoming Internet issue

Send your ideas to Behrcoll5@aol.com

# INTRAMURAL ROUNDUP

### Intramurals

#### Golf

M, W, COED

- Individual and team play
- At Downing Golf Course
- First round Sep 26

Registration Deadline: September 18

#### Cross Country

M, W, COED

- Individual and team competition
- Race begins at 6:00 pm, Monday, October 5

Registration Deadline: October 2

### Recreation

#### Commuter Euchre Tournament

Registration Deadline: Oct 9

## Upcoming Sporting Events

Date	Opponent	Time
<b>Women's Soccer</b>		
September 19	Lake Erie	3:30 p.m.
September 20	Mount Union	3:30 p.m.
September 23	@ Fredonia	4:00 p.m.
<b>Men's Soccer</b>		
September 19	Lake Erie	1:00 p.m.
September 22	@ John Carroll	4:00 p.m.
<b>Cross Country</b>		
September 19	Penn State Behrend Invitational	
<b>Tennis</b>		
September 17	@ Buffalo State	3:30 p.m.
September 18	Pitt-Greensburg	5:00 p.m.
September 19	Penn State Behrend Gamma Invitational	9:00 a.m.
September 20	Frostburg w/ Lake Erie	9:00 a.m.
<b>Volleyball</b>		
September 18-19	@ John Carroll Tournament	TBA
<b>Golf</b>		
September 17	@ Pitt-Greensburg	