

## Calendar of Events

### 16<sup>Thurs</sup>

- Intersivity Christian Fellowship meeting, 7:30-9:30pm, Reed 114
- Andrés Nader, "Poetry and Trauma," 7pm, Reed 117
- SPC movie: "Jackie Brown" 10pm

### 17<sup>Fri</sup>

- Bruno's: Leighan Lord-comedy, 8:30pm
- SPC movie: "Jackie Brown" 10pm

### 18<sup>Sat</sup>

- Bruno's: karaoke, 8:30pm
- SPC movie: "Jackie Brown" 10pm

### 19<sup>Sun</sup>

- Honors and Awards Convocation, 2pm, Erie Hall
- SPC movie: "Jackie Brown" 9pm

### 20<sup>Mon</sup>

- Marijuana Madness open forum, 6:30pm, Reed 117

### 21<sup>Tues</sup>

- Trigon Open House, 5-6pm, Glenhill Farmhouse, Memorial Room
- Society of Undergraduate Economists meeting, 8pm, Academic 57
- SGA Elections, 11am-2pm, Reed

### 22<sup>Wed</sup>

- S.G.A. meeting, 5:30pm, Reed 117
- Alpha Sigma Tau fundraiser, 9am-3pm, outside of Bruno's
- SGA Elections, 11am-2pm, Reed

### 23<sup>Thurs</sup>

- Intersivity Christian Fellowship meeting, 7:30-9:30pm, Reed 114
- Communication Career Night, 7:30pm, Reed 3
- Alpha Sigma Tau fundraiser, 9am-3pm, outside of Bruno's

All submissions for the calendar should be made available to the Collegian by 5:00pm on the Monday before publication.

Please send via inter-office mail to the Collegian Calendar Editor, drop it off at the Collegian office, or send it to BEHRCOLL3@aol.com.

The Collegian cannot guarantee publication of events due to space constraints. The Collegian also reserves the right to edit any material submitted for publication. The calendar is intended for Behrend notices and events.

## Events

**Andrés Nader**, Ph.D. candidate in German studies, will present "Poetry and Trauma: Writings from the Nazi Concentration Camps" on Thursday, April 16 at 7:00 p.m. in the Reed Lecture Hall. The presentation is sponsored by the Mary Behrend Cultural Fund. Nader, a member of the International Study Group on Trauma, Violence, and Genocide, will offer a reading and discussion of poems written by inmates in the camps of Buchenwald, Dachau, and Theresienstadt. These previously untranslated poems offer insight into the daily experience of the victims of the Holocaust.

**Honors and Awards Convocation**, Sunday, April 19 at 2:00 p.m. in Erie Hall.

**Marijuana Madness Open Forum** on NORML (National Organization of the Reform of Marijuana Legislation), Monday, April 20 at 6:30 p.m. in Reed 117.

## Notices

**Intersivity Christian Fellowship** meetings 7:30 p.m. Thursday, April 16 and Thursday, April 23, Reed 114.

**Student Government Association** meeting 5:30 p.m. Wednesday, April 22, Reed 117.

**Trigon Open House**, Tuesday, April 21, 5:00 - 6:00pm in the Memorial Room of the Glenhill Farmhouse. Come learn everything you ever wanted to know about Trigon. We're not hiding, we're reaching out.

**Society of Undergraduate Economists** meeting, Tuesday, April 21, 8:00 p.m., Academic 57.

**Homecoming 1998 meeting** on Thursday, April 16 at 8:00 p.m. in Reed 113.

**Communication Career Night** on Thursday, April 23 at 7:30 in Reed 3. Recent graduates come and speak about their experiences after college. Is it what they expected? Is it easy to find a job? How have their expectations of life after college been reinforced or chaotic?

**Diehl Elementary Adopt-A-School** for one or more semesters. Tutors must commit themselves to tutoring at least once per week. After school tutors are needed from 2:30-3:40 p.m. on Tuesdays and Thursdays with transportation provided from the Reed Lot. In school tutors who can provide their own transportation are welcome to sign up for one hour Monday through Thursday from 9:00-11:00 a.m. or 12:30-2:30 p.m. No prior experience is necessary and all majors are welcome. You will be

working with children kindergarten through grade six. Applications are available in the Office of Student Activities.

**Supplemental instruction**, weekly review sessions with a student tutor, are available for the following courses:

Econ 002: Monday and Wednesday, 2:00-3:00 p.m., 206 Turnbull; Thursday, 5:00-6:00 p.m., 117 Science Acctg 211: Monday, Wednesday, 2:00-3:00 p.m., 57 Academic; Friday, 12:00 a.m.-1:00 p.m., 57 Academic

Chem 012: Monday, 2:00-3:00 p.m., 40 Hammermill; Wednesday, 11:00 a.m.-12:00 p.m., 40 Hammermill; Thursday, 1:00-2:00 p.m., 126 Science

Phys 201: Tuesday, 10:00-11:00 a.m., 40 Hammermill; Wednesday, 4:00-5:00 p.m., 43 Academic; Thursday, 7:00-8:00 p.m., 41 Academic; Econ 004: Sunday, 5:00-6:00 p.m., 41 Academic; Tuesday, 11:00 a.m.-12:00 p.m., 55 Academic; Wednesday, 5:30-6:30 p.m., 40 Hammermill

**Drop-in tutoring** is available for writing and math at:

The Learning Assistance Center, 203 Library and the Math Lab, 131 Science.

Call the L.A.C. at 898-6014 with questions.

**The Computer Center** has made tutorials accessible from any PC connected to the network. Tutorials included are Windows NT 4, Word 97, and Excel 97. Tentatively, the tutorials for Powerpoint and the Access database will be available from the vendor later this semester. To use the tutorials in the lab, click on the Start button and then select the following items from the cascading menus: Programs/Utilities & Tutorials/LearnIt Tutorials. It is recommended that new users select the tutorial lesson, Using LearnIt Interactive Training, to get acquainted with the tutorial's navigation tools. If there are any questions concerning the use of the tutorials, the student consultants are available for assistance.

The Equal Opportunity Planning Committee of Penn State has announced funding for the **1998 Minority Advanced Placement Program/ Women in Science and Engineering Program (MAPP/WISE)** at Behrend. In addition, International Paper has once again agreed to support this initiative. This will be the sixth summer of operation for MAPP/WISE at Behrend. MAPP/WISE is a free summer program for academically talented Erie-area high school students. Students enroll in a three-credit course with regularly enrolled University students during the College's eight-week summer session. The MAPP portion of the program includes students from underrepresented groups; the WISE portion of the program encourages female high school students to ex-

plore career possibilities in science, engineering, and engineering technology. Students participating in MAPP/WISE learn study techniques, test-taking strategies, and writing skills that help prepare them for academic study at the college level. Students in the program receive career counseling and attend special lectures and field trips conducted by professionals in business, industry, human services, and education. All applicants to the program must be high school juniors during the 1997-98 school year and have a grade-point average of 2.75 or higher. To obtain an application, contact your high school guidance counselor of the Office of Admissions at (814) 898-6100.

All full-time faculty and staff: We are now capturing photos and signatures of all faculty and staff for new **ID+ cards**. Cards currently in circulation will not work beginning with Summer Session 1998. Phase out will begin as early as May 10. This ID card is needed for Dobbins Gazebo, Bruno's, the Library, and building and room access at all Commonwealth College locations and University Park. Banking options may be available as early as Fall 1998. Student photo capture will begin April 1, 1998. We strongly encourage all full-time faculty and staff to have their photos taken prior to April 1 to avoid long lines in August. ID+ cards will be distributed April 27. If you have an interim ID from the new system (white card), it is not necessary to have your picture retaken. We will print your photo on the new stock and distribute it on April 27. The ID office is located on the second floor of the Reed Building, overlooking the

Wintergarden. It is open Monday through Friday from 10:00 a.m. to 6:00 p.m. If there are any questions, please phone 898-6035 or visit [www.hfs.psu.edu/idcard/id+](http://www.hfs.psu.edu/idcard/id+).

Students will receive an offer from **AT&T** for a calling card number to be printed on the ID+ card. The postcard must be returned to the ID office to indicate whether you want to participate in the program. This is a 1+ card for use anywhere in the world. This option will not replace the ACUS 0+ based systems now in place for residence hall students. Signing up for the calling card will give you \$10.00 free calling (for 60 days after sign up), and a free one year membership to the Student Advantage (a national student discount program).

For the second time, Behrend will be offering **AAAS 146: The Life and Thought of Martin Luther King Jr.** during Fall 1998. The course, last taught during Spring 1997, was very popular with students. It fulfills either the general humanities or the diversity requirement for graduation.


The **Spring 1998 Commencement** ceremony will be held on Saturday, May 16 at noon. In case of inclement weather, two ceremonies will be held. The first will begin at noon in Erie Hall and the second will begin at 2:30 p.m. Seniors who intend to participate in the graduation ceremony must purchase a cap and gown from the bookstore. Prices are as follows: Baccalaureate (keeper) \$22.75; Associate (keeper) \$22.75; Graduate (rental) cap, gown, hood \$35.25; Graduate (keeper) cap, gown, hood \$46.00. The deadline to order caps and gowns is April 10.

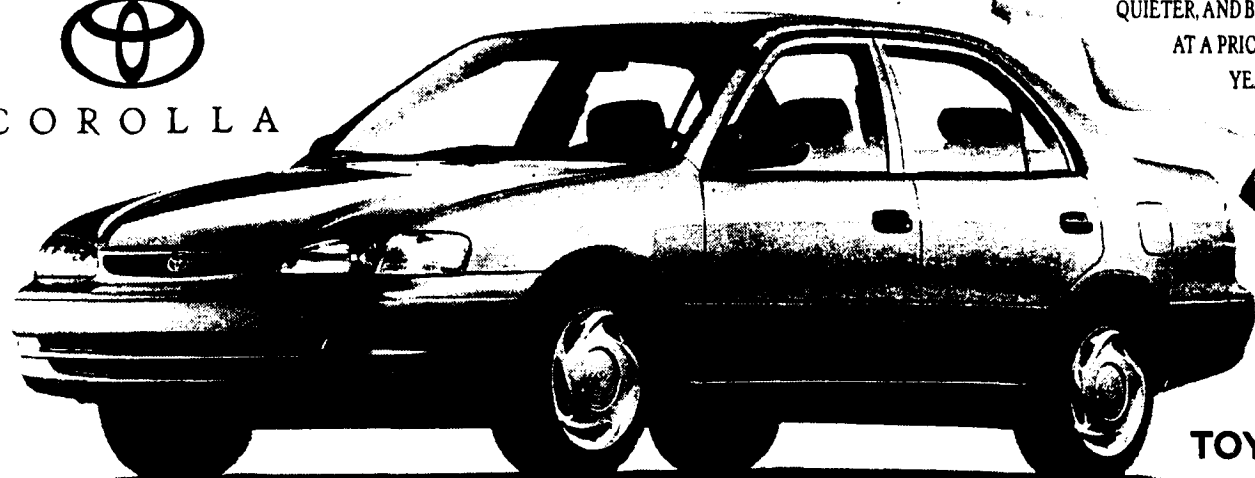
This spring Behrend has awarded twenty-three **Undergraduate Summer Research Fellowships** for 1997/1998. The awards, which total \$21,970, were presented to twenty-six undergraduate students. In the fall of 1997, the College awarded twenty-five undergraduate research grants totaling \$13,587. The Undergraduate Summer Research Fellowships bring the total awarded for undergraduate research in the 1997/98 academic year to \$35,557. Undergraduates receiving research grants will pursue their projects with faculty during the summer of 1998. Grant money is used to offset students' research expenses such as travel, library loans, materials, and photocopying. Research proposals were funded in each of the four schools of the University. In the School of Humanities and Social Sciences, proposals ranged from "The House of Morgan: Financiers of the Great War, 1914-1918," to "Theory of Mind and Self-Regulation in Children." In the School of Business, "Generalization of an Expert Bidding Tool" was funded. In the School of Engineering and Engineering Technology, "Experimental System for Metal Cutting Dynamics and Control Research" received an award. Sixteen Undergraduate Summer Research Fellowships were awarded in the School of Science to proposals ranging from "The Culture and Kinetics of Human Cancer Cells" to "Developmental Analysis of Serotonin Receptors in Zebrafish." Research funding for the 1998/99 academic year will be announced in fall of 1998.

More than fifty students in mechanical engineering and mechanical en-

gineering technology at Behrend attended the **American Society of Mechanical Engineers (ASME)** Regional Student conference held April 2 through April 4 in Troy, Michigan. Students making oral presentations at the conference included David Genung, "Calculations for Brewing Beer," Justin Held, "Camshaft Lobe Stock Gauge," Matthew Jaworsky, "Design of a Probe to Measure Melt Temperature During Injection Molding," and Jennifer Whitman, "Dynamic Resistor Design." Students participating in the Technical Poster Competition included Jessica Kridler, Jennifer Whitman, and Tracy Zeno, "Dynamic Resistor Design," Chad Thompson, "30-Ton Gantry Crane Hoist Drum Design Comparison," and Dustin Zinz and Greg Hathaway, "Optimization of a Five-inch Floor Strainer." David Genung received a certificate as the Outstanding Student Member of the MET group, and Craig Williams received the Outstanding Student Member certificate for the ME group. Dustin Zinz and Greg Hathaway received a second place award for their technical poster. Dr. Amir Khalilollahi, assistant professor of mechanical engineering, received the Region's Faculty Advisor Award for outstanding service to his student group. The Mechanical Engineering Technology group, which numbered twenty-seven, also won the Man-Mile contest. The winner of this award is determined by multiplying the number of students attending in each group by the number of miles traveled to the conference. The Man-Mile trophy will be displayed at Behrend for the next year.

# TOYOTA COROLLA... IT'S CHANGED!

  
COROLLA



THERE ARE A FEW SPECIAL THINGS THAT WE CAN REALLY COUNT ON TO HELP US ACCOMPLISH ALL THAT WE NEED TO DO. RELIABLE, DEPENDABLE THINGS LIKE THE TOYOTA COROLLA. OVER THE PAST 30 YEARS, COROLLA HAS BECOME ONE OF THE MOST TRUSTED CARS IN THE WORLD. AND NOW IT'S ALL-NEW. WITH MORE PASSENGER AND TRUNK ROOM, AN ALL-NEW ALUMINUM ENGINE THAT'S ONLY MORE POWERFUL, IT'S MORE ECONOMICAL...UP TO 38 MILES PER GALLON HIGHWAY. COROLLA IS SAFER AND QUIETER, AND BEST OF ALL IT STARTS AT A PRICE LOWER THAN LAST YEAR. MORE CAR...LESS MONEY. WHAT A REFRESHING CHANGE!

TOYOTA | everyday