

RECEIVED
FEB 19 1996
BEHREND COLLEGE

NON-PROFIT ORG.
U.S. POSTAGE
PAID
ERIE, PA.
PERMIT #282

Collegian

Vol XLIV, No. 16

Erie, PA 16563

Thursday, February 15, 1996

Computers stolen Was security to blame?

by Sean Siekkinen
Collegian Staff

A daring daytime robbery of computer equipment valued at over \$15,000 took place last Wednesday in front of over twenty witnesses.

Between 11 a.m. and noon, a man walked out of Nick 156 with two Silicon Graphics computers and one monitor, according to Police and Safety officers.

Students in the lab at the time assumed the man was a computer center employee, according to system analyst Ken Bauer, director of the Silicon Graphics lab.

One student even held the door open as the thief left.

Bauer discovered the theft while performing a routine check in the lab following a class that ended at 1 p.m. He said this is the first theft incident of such magnitude at Behrend.

"I know of another computer that was stolen two years ago," Bauer said. But its price tag pales in comparison to the nearly \$30,000 retail price of the stolen SGI machines.

Behrend received substantial educational discounts from Silicon Graphics on the most recently stolen computers.

Tod Allen, the Police and Safety officer in charge of the investigation, said, "Right now, we're trying to piece together what happened."

According to Allen, Police and Safety is still interviewing witnesses and collecting information. There are over 20

witnesses, each with a varying account of the incident.

"We really haven't pieced [what happened] together yet," Allen said.

"Was security to blame? I don't know what to say about that," Bauer said of the situation surrounding the theft.

The thief was able to access the lab because of a magnetic card reader that, according to Bauer, has been down since summer of last year.

The SGI lab, along with the Compaq Pentium lab next door, has always been unsupervised. Despite the theft, both labs remain open and totally accessible to any student or non-student in the Nick building. The Compaq lab will now be regularly patrolled by computer center consultants. The SGI lab, however, remains unsupervised.

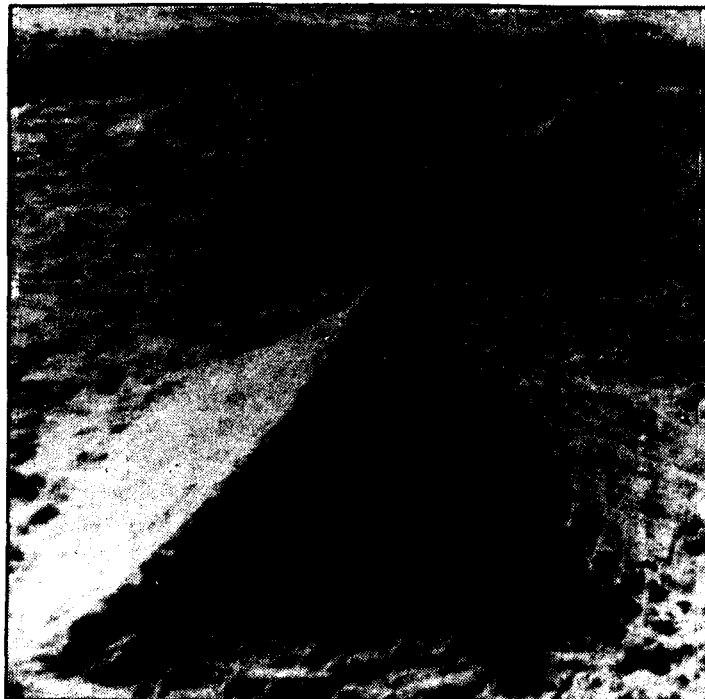
Regardless of whether or not security provisions at the computer labs were lax, most engineering labs will be implementing functional card readers in light of the incident.

see THEFT page 2

"Was security to blame? I don't know what to say about that."

--Ken Bauer

Fun in the snow



The Egyptians never had it so cold: Piles of snow create new tombs for the Pharaohs.

by Kyra Kindon
Collegian Staff

The first annual Winter Wellness Fest is being celebrated this week at Penn State-Behrend. The event is sponsored by the Penn State-Behrend Health Advisory Board and will continue through Friday afternoon.

This evening at 7 p.m., a panel on Seasonal Affective Disorders is being presented by Harriet Women's Health Connection. Traci Pulson is hosting the panel in Lawrence Hall Lobby. Pulson will offer tips on curing the winter blues and free refreshments will be provided.

A Snow Sports Demo will be held Friday between 11:30 a.m. and 1 p.m. on the Wintergreen Patio. "Skiing, snowboarding and ice climbing are some of the highlights," said Patty Pasky McMahon, coordinator of Health and Wellness Services.

Koenig Sports and Eastern Mountain Sports will offer a demonstration and trial use of various winter sports equipment, teaching people how to protect themselves while having fun in

the snow. "Everyone interested is encouraged to attend," said McMahon.

The Winter Wellness Fest kicked off Monday with a Health Fair in the Wintergreen Lobby of the Reed Union Building. The Health Fair was sponsored by St. Vincent Health System and the YMCA.

Blood sugar screening, health style and stress scoring, cardiac assessment, blood pressure checks with samples and an Ask the Doctor moment, as well as other health-related services were offered. Cholesterol level checks were also offered for \$3.00.

Organizers were pleased with student attendance at the event. "We were pleased by the amount of people who came and took advantage of all the information that was offered," said McMahon.

On Tuesday, the Most Unique Snow Creature Contest was held behind the Glenhill Farmhouse beginning at 11:30 a.m. A bonfire and live music contributed to the event.

see WINTER page 2

Alternative spring break to help homeless

by Steve Landon
Collegian Staff

Sun, sand and swimming are normally associated with spring break. But this year about 11 Behrend students will be thinking, "Service, service, service," as they travel to Baltimore, MD as part of this year's Alternative Spring Break.

The trip is co-sponsored by the Office of Student Activities and

the Protestant Campus Ministry at Behrend.

The student volunteers will be working at two homeless shelters in Baltimore during spring break. They will also be staying in a secured portion of the Our Daily Bread shelter.

In preparation for the trip, the group traveled to Greenfield Baptist Church in North East to learn how to make sleeping bags from scrap materials. When the

group returns to Erie they will be leaving those bags donations to the shelters.

This weekend the group will be traveling to Slippery Rock to join students from Penn State-McKeesport and Slippery Rock University in painting the Butler County Children's Center. They will be joined by Ed Mulfinger, director of Housing and Food

see SPRING page 4

Inside

News

Equal Opportunity Explored Page 3

Horoscopes Page 5

Entertainment

Dirges Page 8

"Bed of Roses" Page 9

Opinion

Beware of Breeders Page 7

Sports

ATW Page 10

Men's Hoops Page 11

Women's Hoops Page 12