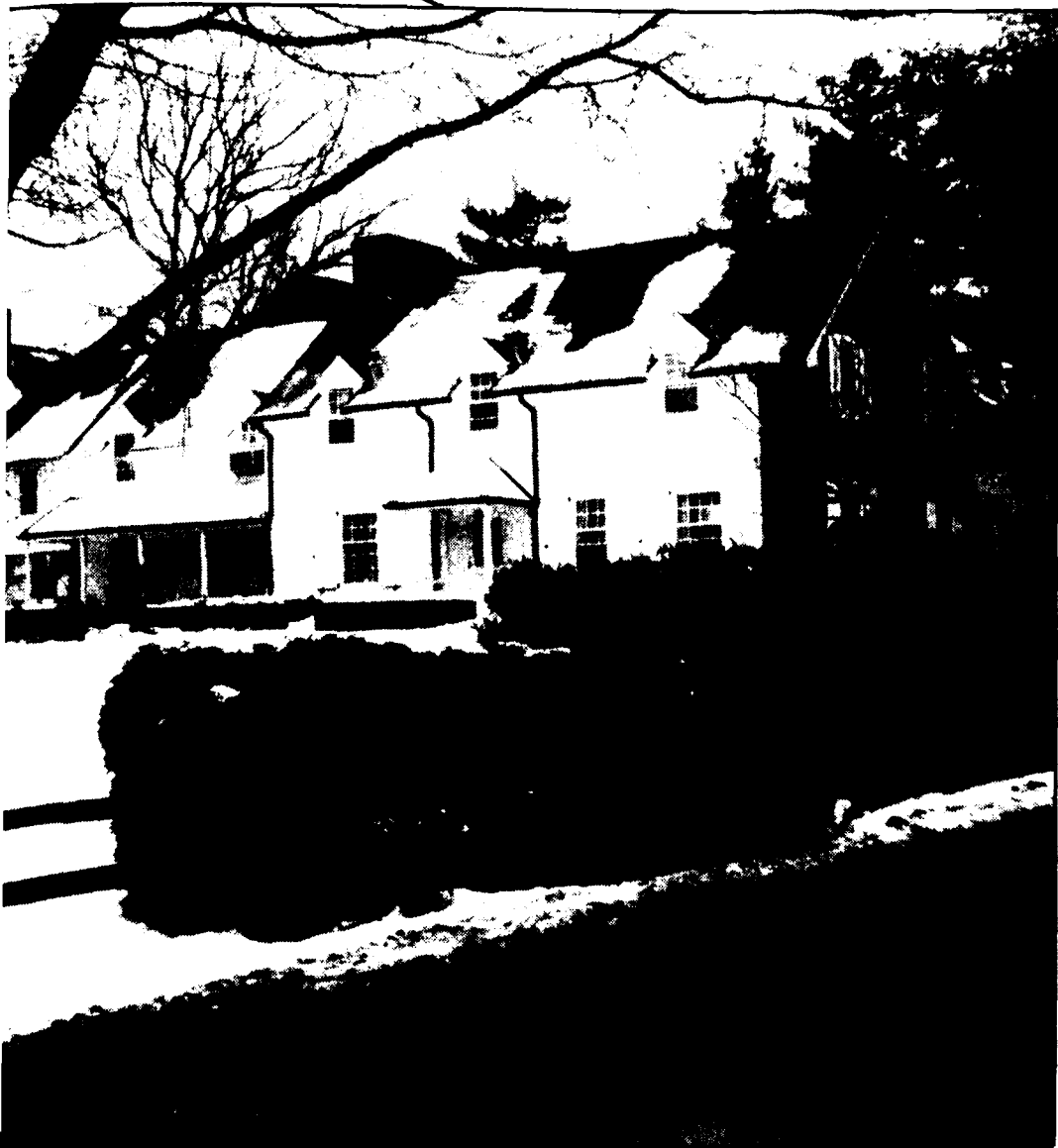


Behrend accessibility questioned



Originally built house and is unaccessible to people in wheelchairs, often meetings are planned where the financial aid person can meet them.



Behrend is riddled with stairs that plague wheelchairs.

a quarter of a million dollars. You can't just go get it. You have to go through the bureaucracy and that takes a long time. You can get into Reed, there is reasonable access."

According to Mboto, the staff is aware of the accessibility problems. She said that they often will go to the person instead of making the person come to them.

"We are aware of the problems. Glenhill Farmhouse, for it being originally built as a house and a old house at that, it is not accessible to people in wheelchairs. We plan

meetings where the financial aid workers physically go to the person and meet him."

Mboto added that Behrend has plans for improvement in the future.

"We're working with what we have with plans to improve. We are concerned with the future, not with just Emerson, but for the other students."

The University is also waiting for results of an ADA survey. Ream said that the survey was to see if Behrend complied with regulations.

"Last year in November the facilities were surveyed, including the restrooms to see if they complied with ADA regulations. That data was fed back to University Park. The University will be looking at the deficiencies to work on at a system-wide basis. We are still waiting on the results," Ream said.

"You have to go through the bureaucracy and that takes a long time. You can get into Reed, there is reasonable access."

- Ngozi Mboto

Mboto said that Penn State realizes that there are students with disabilities at Behrend and understand their problem.

"We are sensitive to other students. We have blind students, students with impaired hearing, and other student's with mobility problems. We help them based on their need. We do not have a department of Students with Disabilities. We have me. We can only work within the structure that is Penn State," Mboto said.

In regards to the future, Mboto

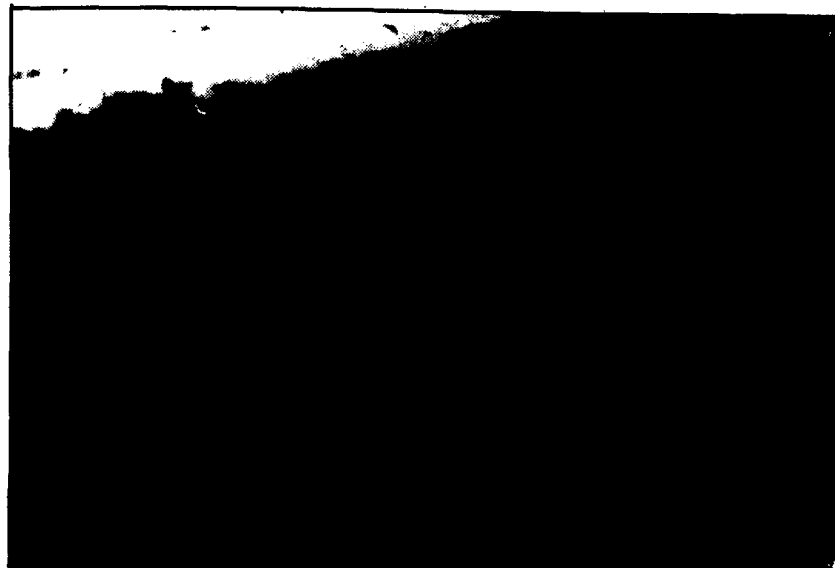
feels that rationality must be adapted.

Mboto continued, "Contractors are coming in to tell us what we can do. It will not happen this semester, it will probably not happen in the 95-96 semester, but gradually you will see changes, not drastic ones, but they will add up."

"We have to be realistic. Looking at our environment, what can we possibly do? We don't want to destroy the environment completely. Ambience is part of Behrend's charm," she said.



Most doors on campus can be opened with a wheelchair. Doors in the Reed Building are often times a day. (Right) The doors are often and often make it hard



**Photos and Story
by R. Carl Campbell III
News Editor**