

**THE TRIBUNE PRIZE STRAWBERRIES.**  
How the Originated—How they Look and Taste—Why they are Given to the Subscribers of the Tribune and to Whom they will be Distributed.

The cut in our show bills represent 'The Tribune Prize Strawberries'—so named because we purchased them, at a very large price, to bestow exclusively upon the subscribers of either edition of THE TRIBUNE for 1883. Intending to send one of each kind to every subscriber who expresses a wish to that effect at the time of subscribing. This will be equal to a price of \$1.30 to each subscriber, as that is the price charged by nurserymen of similar plants. Indeed, neither of these prize strawberries could be obtained at any price whatever, as we have secured every plant that can be produced in the year 1883, exclusively, as prizes to our subscribers. We have incurred the large outlay necessary for this purpose, because we have an earnest desire to see the propagation of improved fruit greatly extended, and because we believe that every one who receives these plants and grows the fruit will hold THE TRIBUNE in kindly remembrance for enabling him to enjoy such a good gift of a kind Providence, and will thereafter feel an increased desire to improve all the list of fruits. It is thus that health and happiness will be increased.

As these plants have all to be grown from the few plants that we bought of Mr. Fuller in the Autumn of 1882, he will not be able to send them to subscribers until after the 1st of September, 1883, when they will be carefully packed in oil silk or paper, and forwarded, through the mails, at our expense, or by express at expense of the receiver. The three plants will be sent to each person who sends us a year's subscription for either the Daily, Semi-Weekly, or Weekly Tribune, indicating at the time of subscribing that they desire the Strawberries, and the distribution will be made in the order the subscribers names and requests for Strawberries are received.

Single subscribers will receive their plants by mail, done up in oil silk, or other suitable oil substance.

To Clubs, plants will be sent in packages, to correspond with the number of names in the Club; and where the number will warrant it, they will be sent by express, packed in boxes.

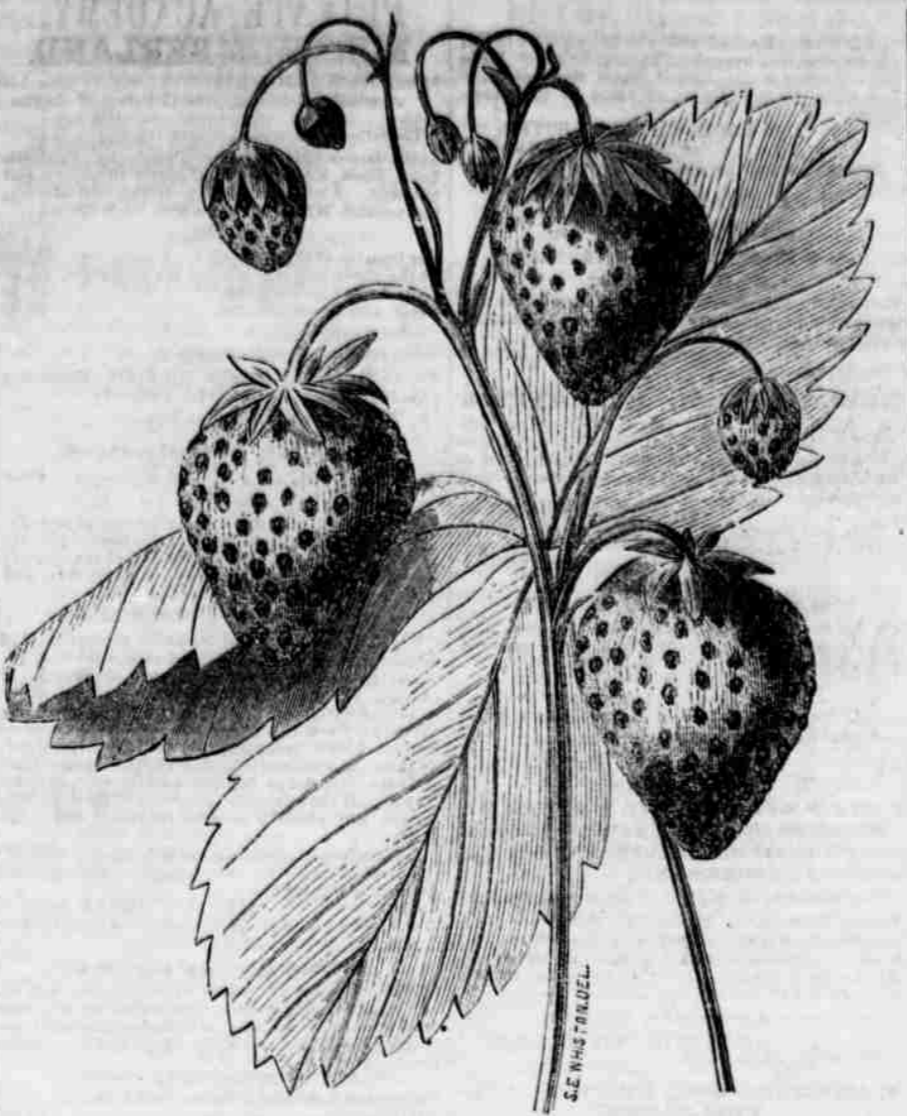
New subscribers who desire strawberry plants should say so at the time they send their money, as we do not intend to send any to those who will not appreciate them. They are too valuable to be wasted. There are parties who would gladly contract for the exclusive right to all these plants, at 25 cents a

piece, and there are many subscribers who would not so soon as they see and taste the fruit, part with their price for a \$3 "green back."

**HOW THESE NEW STRAWBERRIES WERE PRODUCED.**

The following statement is made by Andrew S. Fuller, horticulturist, Brooklyn, the originator of these strawberries. He says:

"It is now between seven and eight years since I commenced sowing seeds of the strawberry for the purpose of producing new and improved varieties. I have always selected seeds from the largest and best that could be obtained, and the results were that I produced some few good varieties each season; yet they were not such as I was willing should go out as my seedlings. Every season I selected the seed with more care than I did the previous one, and found that I made constant improvements. I therefore determined that I would put forth extra exertions and see if a few extra choice varieties could not be produced. In 1850 I obtained the best varieties known, and by fertilizing the flowers one with another, I expected to produce strawberries combining greater excellence than heretofore known. In this I was not disappointed. I produced that year many thousands of seedling plants, and the fruit of many was really excellent, so much so that I was urged not to throw the plants away, but as excellence, and not variety, was my object, I destroyed all but the most promising. I determined from the first that no plant should go out as a seedling of mine unless it combined greater excellence than any other strawberry known. From the selections of that year a competent Committee from the Farmers' Club of the American Institute, who had the matter three years in charge, made a selection of three sorts, ripening early, medium and late, and these I preserved as the final result of my seven years laborious experiments to procure improvement in strawberries from seeds. These I intended to dispose of in the ordinary way of a nurseryman's business, and should have done so but for the desire of the THE TRIBUNE Association to make a gratuitous distribution of these truly excellent strawberries to their subscribers. I have therefore contracted to furnish them exclusively for that purpose. Not one of them can be bought of me at any price. If I had kept them for sale to individuals, the price would have been 50 cents each or \$5 a dozen."



"The third, from its color and origin, is called the Brooklyn Scarlet. Although this variety is inferior in size to the other two, yet possesses merit that will always make it a great favorite. Its shape is a regular oblong cone, color the most beautiful bright scarlet. Flavor, the very best. We have the unanimous decision of the judges at the great strawberry show the past season at No. 41 Park row, New York, on this point, as they awarded it the first premium over all its numerous competitors. The plant is a very strong and vigorous grower, making monstrous stools the first season, from which an enormous amount of fruit stalks are produced. Add to this its lateness, which assists so much in prolonging the season of this delicious fruit, and we have in this strawberry something as near perfection as possible, though not as large as the others. Yet this is not small, and among the sorts most cultivated, ranks medium to large."

The above descriptions by Mr. Fuller, in addition to all that we have already published, must be sufficient to satisfy all minds that we are offering no trifling prize to our subscribers, as an indication of our good will, and certainly with a hope of their continued good will to us.

Wm. S. Carpenter said in the Farmers' Club that the Wilson was extensively cultivated in this vicinity as a market fruit, and proved very profitable. Of all the strawberries he has growing, he must continue to give preference to the Col. Ellsworth, one of Mr. Fuller's new seedlings, sold to THE TRIBUNE. The other two are also very fine, and a great acquisition.

The Col. Ellsworth and The Brooklyn Scarlet, exhibited by Mr. Fuller, took the prize for the best two sorts at the Brooklyn Horticultural Society Exhibition, June 16 and 17. Owing to an accident, The Monitors were not exhibited.

We have only to add that the colored prints given

upon our show bills are as exact representations as can be given, and in no respect exaggerations of THE TRIBUNE PRIZE STRAWBERRIES.

**TERMS OF THE TRIBUNE.**

Single copy	3 cents
Mail subscribers, one year (11 issues)	\$8
SEMI-WEEKLY TRIBUNE	
One Copy, one year (104 issues)	\$3
Two Copies, one year	\$5
Five Copies, one year	\$12
Ten Copies, one year	\$22.50

An extra copy will be sent to any person who sends us a club of twenty or over.

The Semi-Weekly Tribune is sent to Clergymen for \$2.25.

**WEEKLY TRIBUNE.**

One Copy, one year (52 issues)	\$2
Three Copies, one year	\$5
Five Copies, one year	\$8
Ten Copies, one year	\$15

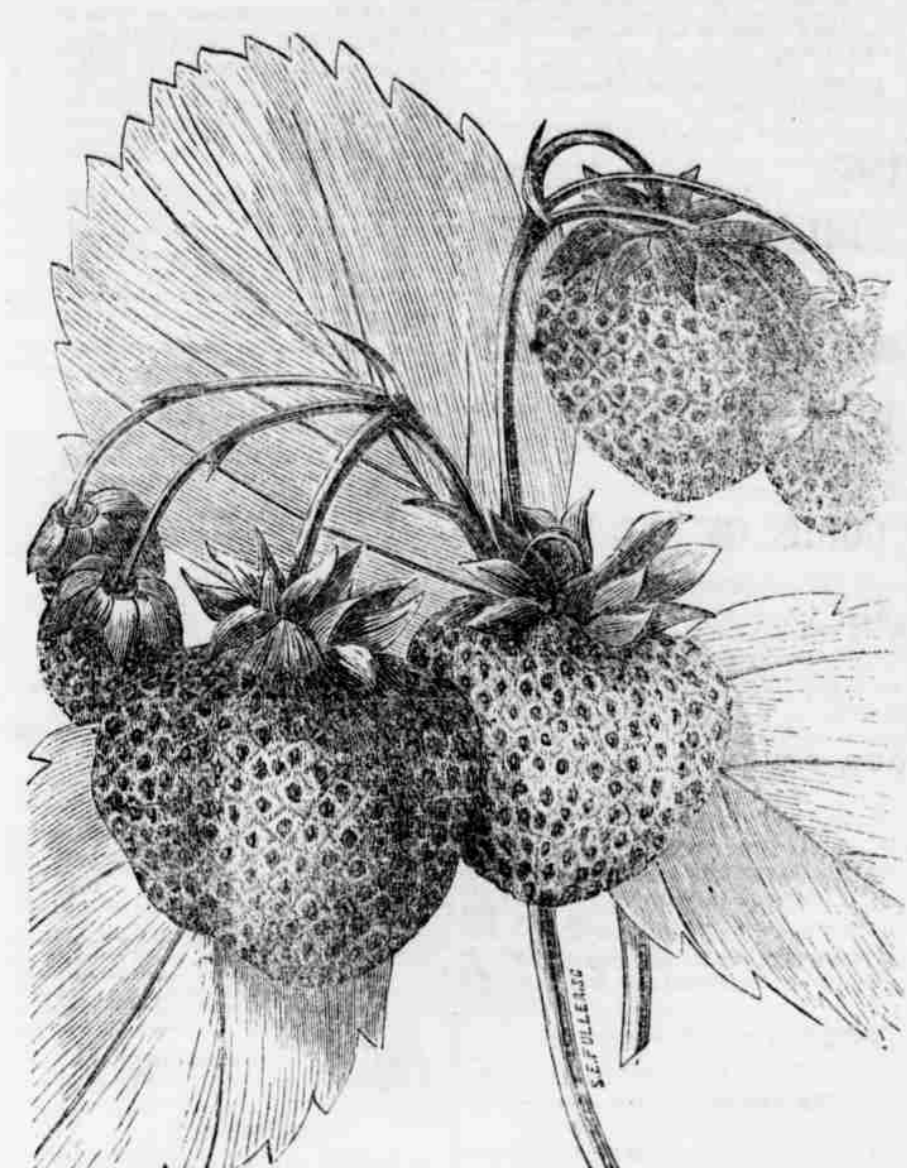
Any larger number, addressed to names of subscribers, \$1.50 each. An extra copy will be sent to every club of ten.

Twenty Copies, to one address, one year, \$25; and any larger number at same price. An extra copy will be sent to clubs of twenty. Any person who sends us a club of thirty or over shall receive THE SEMI-WEEKLY TRIBUNE gratis.

To any person who sends us a club of fifty or over THE DAILY TRIBUNE will be sent without charge. THE WEEKLY TRIBUNE is sent to Clergymen for \$1.25.

At Post-Offices where full Clubs cannot be formed either for THE SEMI-WEEKLY or WEEKLY TRIBUNE, subscribers to the two editions can unite at Club prices, should the total number of subscribers come within our rule.

Address THE TRIBUNE, Tribune Building, New York



**NAMES AND DESCRIPTIONS OF THE PRIZE STRAWBERRIES.**

"The earliest ripening one was named Col. Ells worth. In honor of the martyr who lost his life when Alexander, Va., was first occupied by the Union army during the present war. It is a very large variety, of a crimson color, conical in shape, and having slight depression, running from calyx to

point, resembling the sutures on the peach, with a long neck, and the calyx partly resilly from the berry, quality good, flesh firm. Although the largest of the three, it is also the earliest, ripening at the same time as the Jenny Lind and Early Scarlet, and is very productive. The original plant, eighteen months from the time the seeds were sown, produced over 200 perfect berries, averaging from 1 inch to 1 1/2 inches in diameter.

The earliest ripening one was named Col. Ells worth. In honor of the martyr who lost his life when Alexander, Va., was first occupied by the Union army during the present war. It is a very large variety, of a crimson color, conical in shape, and having slight depression, running from calyx to

point, resembling the sutures on the peach, with a long neck, and the calyx partly resilly from the berry, quality good, flesh firm. Although the largest of the three, it is also the earliest, ripening at the same time as the Jenny Lind and Early Scarlet, and is very productive. The original plant, eighteen months from the time the seeds were sown, produced over 200 perfect berries, averaging from 1 inch to 1 1/2 inches in diameter.

The earliest ripening one was named Col. Ells worth. In honor of the martyr who lost his life when Alexander, Va., was first occupied by the Union army during the present war. It is a very large variety, of a crimson color, conical in shape, and having slight depression, running from calyx to

point, resembling the sutures on the peach, with a long neck, and the calyx partly resilly from the berry, quality good, flesh firm. Although the largest of the three, it is also the earliest, ripening at the same time as the Jenny Lind and Early Scarlet, and is very productive. The original plant, eighteen months from the time the seeds were sown, produced over 200 perfect berries, averaging from 1 inch to 1 1/2 inches in diameter.

The earliest ripening one was named Col. Ells worth. In honor of the martyr who lost his life when Alexander, Va., was first occupied by the Union army during the present war. It is a very large variety, of a crimson color, conical in shape, and having slight depression, running from calyx to

point, resembling the sutures on the peach, with a long neck, and the calyx partly resilly from the berry, quality good, flesh firm. Although the largest of the three, it is also the earliest, ripening at the same time as the Jenny Lind and Early Scarlet, and is very productive. The original plant, eighteen months from the time the seeds were sown, produced over 200 perfect berries, averaging from 1 inch to 1 1/2 inches in diameter.

The earliest ripening one was named Col. Ells worth. In honor of the martyr who lost his life when Alexander, Va., was first occupied by the Union army during the present war. It is a very large variety, of a crimson color, conical in shape, and having slight depression, running from calyx to

point, resembling the sutures on the peach, with a long neck, and the calyx partly resilly from the berry, quality good, flesh firm. Although the largest of the three, it is also the earliest, ripening at the same time as the Jenny Lind and Early Scarlet, and is very productive. The original plant, eighteen months from the time the seeds were sown, produced over 200 perfect berries, averaging from 1 inch to 1 1/2 inches in diameter.

The earliest ripening one was named Col. Ells worth. In honor of the martyr who lost his life when Alexander, Va., was first occupied by the Union army during the present war. It is a very large variety, of a crimson color, conical in shape, and having slight depression, running from calyx to

point, resembling the sutures on the peach, with a long neck, and the calyx partly resilly from the berry, quality good, flesh firm. Although the largest of the three, it is also the earliest, ripening at the same time as the Jenny Lind and Early Scarlet, and is very productive. The original plant, eighteen months from the time the seeds were sown, produced over 200 perfect berries, averaging from 1 inch to 1 1/2 inches in diameter.

The earliest ripening one was named Col. Ells worth. In honor of the martyr who lost his life when Alexander, Va., was first occupied by the Union army during the present war. It is a very large variety, of a crimson color, conical in shape, and having slight depression, running from calyx to

point, resembling the sutures on the peach, with a long neck, and the calyx partly resilly from the berry, quality good, flesh firm. Although the largest of the three, it is also the earliest, ripening at the same time as the Jenny Lind and Early Scarlet, and is very productive. The original plant, eighteen months from the time the seeds were sown, produced over 200 perfect berries, averaging from 1 inch to 1 1/2 inches in diameter.

**JUST OPENED!**

**E. Y. BRIGHT & SON,**  
INVITE the early attention of cash purchasers to their choice, varied and extensive assortment of FRESH WINTER GOODS which they offer at reasonable prices. Our stock embraces

A full line of Handsome Dress Goods,  
A nice lot of Domestic Dry Goods,  
A choice supply of fine White Goods,  
A great variety of Boots and Shoes,  
A large stock of Queens and Glassware,  
A very extensive lot of Hardware,  
Hats and Caps and Ready Made Clothing  
Groceries of all kinds, fresh and pure,  
Drugs—Paints—Glass and Oils.

**WE INVITE**

particular attention to the following line of Goods, suitable for Holiday Presents.

- Real Heavy Blanket Shawls,
  - French Blanket and Broche Shawls,
  - Hosiery for Ladies, Gents and Children,
  - Ladies Gloves in great abundance,
  - A complete stock of Gents Gloves,
  - Fancy Shirting and Opera Flannels,
  - Assorted colors Balmain Skirts,
  - Skeleton Skirts in great Variety,
  - Zephyr Opera Caps and Nubias,
  - Fine Sale Fur and Muffs,
  - Fine White Linen Handkerchiefs,
  - Colored border Cambric Handkerchiefs,
  - Real Bandanna Silk Handkerchiefs,
  - Gents Silk Neck Ties and Cravats,
  - Fine necked work Collars,
  - Super Black Love Veils,
  - Silk Tissues of assorted Shades,
  - Ribbons, Laces, Edgings and Ruffings,
  - Fine Black Mohair Caps,
  - Shawl Pins and Scarf Pins,
  - Perfumery, Pomades and Soaps,
  - Buck Purses and fancy Port Monies,
  - First rate Skates, ready strapped,
  - Nice Hair Brushes and Pocket Combs,
  - Extra good Penknives and Scissors,
  - Childrens Gum Gilded Combs,
  - &c., &c., &c.
- Sunbury, Dec. 20, 1882.

**NOTICE!**

**The Adams' Express Company,**  
GIVE NOTICE that they have concluded arrangements with the Northern Central Railroad Company to run trains from Baltimore for York, Harrisburg, Danville, Hagerstown, Sunbury, Northumberland, and other intermediate stations, connecting at Harrisburg with the GREAT WESTERN EXPRESS for Pittsburg, Cincinnati, St. Louis and the West.

Also with Howard & Co.'s Express at Milton or Danville, Bloomberg, Williamsport, Pittsburg, Harrisburg, and intermediate stations on the Catawgon, Lackawanna & Bloomsburg Railroads. At Williamsport, by Howard & Co.'s Express to Jersey Shore and Lock Haven. Also, by Howard & Co. and their connections for Canton, Troy, Elmira, Rochester, Buffalo, Niagara, and all accessible points in Western New York and Canada, by which they will forward Merchandise, Goods, Bank Notes, Jewelry, and Valuable Packages of every description.

Aim, Notes, Drafts and Bills for Collection. Experienced and efficient managers employed, and every effort will be made to render service.

**JOHN BISHOP,**  
Superintendent Penn'a Division, Philadelphia.  
R. A. FINCHER, Agent for Sunbury.  
April 5, 1882.

**THE ALL SUFFICIENT THREE.**

**THE GREAT AMERICAN REMEDIES.**

Known as "Helmhold's"

**GENUINE PREPARATIONS, VIZ.**

**HELMHOLD'S EXTRACT "BUCHU,"**  
"SARSAPARILLA"  
"IMPROVED ROSE WASH."

**HELMHOLD'S**

**GENUINE PREPARATIONS**

"HIGHLY CONCENTRATED" COMPOUND

**FLUID EXTRACT BUCHU,**

A Positive and Specific Remedy

For Diseases of the

**BLADDER, KIDNEYS, GRAVEL, AND DROPSICAL SWELLINGS.**

This Medicine increases the power of Digestion, and facilitates the Absorption into healthy action, by which the Watery or Calcareous Depositions, and all Unnatural Enlargements are reduced, as well as pain and inflammation, and is good for men, women, or Children.

**HELMHOLD'S EXTRACT BUCHU**

FOR WEAKNESSES

Arising from Excesses, Habits of Dietiation, Early Indiscretion, or Abuse.

Attended with the following symptoms:

Indisposition to Exercise, Difficulty of Breathing

Weak Nerves, Trembling

Waking, Waking in the Night

Dizziness of vision, Pain in the back,

Universal Lassitude of the Muscular System,

Hot Hands, Pallid Countenance.

Dryness of the Skin.

It is allowed to go on, until this medicine invariably removes, soon follow

**IMPOTENCY, FATUITY, EPILEPTIC FITS.**

In one of which the patient may expire. Who can say that they are not frequently followed by those "direful diseases."

**INSANITY AND CONSUMPTION,**

Many are aware of the cause of their suffering, but none will confess. The records of the insane Asylums, and the melancholy deaths by Consumption, speak ample witness to the truth of the assertion.

The Constitution, Affected with Organic Weakness

Requires the aid of medicine to strengthen and invigorate the system, which "Helmhold's" Extract Buchu invariably does. A trial will convince the most skeptical.

**FEMALES, FEMALES, FEMALES,**

Old or young, single, married, or contemplating marriage.

In many affections peculiar to Females the Extract Buchu is unequalled, as other remedies, as in Chlorosis or Retention, Irregularity, Painfulness, or Suppression of the Menstrual Evacuation, Uterine or Cervical Stricture, Leucorrhoea, or Female Sterility, and for all complaints incident to the sex, whether arising from Indiscretion, Habits of Dietiation, or in the

**DECLINE OR CHANGE OF LIFE.**

See symptoms above.

**NO FAMILY SHOULD BE WITHOUT IT.**

Take no Balsam, Mercury, or Unpleasant Medicine for Ulcers, or any Dangerous Disease.

**HELMHOLD'S EXTRACT BUCHU**

Cures

**SECRET DISEASES**

In all their stages; at little expense; little or no change in diet; no inconvenience.

**AND NO EXPOSURE.**

It causes frequent desire, and gives strength to Urinate, thereby removing obstructions, preventing, and curing Strictures of the Urethra, allowing pain and inflammation, so frequent in this class of disease, extending Poisonous, Diseases, and Worst-out Matter.

Thousands upon Thousands

**WHO HAVE BEEN THE VICTIMS OF QUACKS.**

And who have paid Heavy Fees to be cured in a short time, have found they were deceived, and that the "Poison" which they had taken, was "Powerful Astringents," been dried up in the system, to break out in an aggravated form, and

Perhaps after Marriage.

**HELMHOLD'S EXTRACT BUCHU**

Cures

**SECRET DISEASES**

In all their stages; at little expense; little or no change in diet; no inconvenience.

**AND NO EXPOSURE.**

It causes frequent desire, and gives strength to Urinate, thereby removing obstructions, preventing, and curing Strictures of the Urethra, allowing pain and inflammation, so frequent in this class of disease, extending Poisonous, Diseases, and Worst-out Matter.

Thousands upon Thousands

**WHO HAVE BEEN THE VICTIMS OF QUACKS.**

And who have paid Heavy Fees to be cured in a short time, have found they were deceived, and that the "Poison" which they had taken, was "Powerful Astringents," been dried up in the system, to break out in an aggravated form, and

Perhaps after Marriage.

**HELMHOLD'S EXTRACT BUCHU**

Cures

**SECRET DISEASES**

In all their stages; at little expense; little or no change in diet; no inconvenience.

**AND NO EXPOSURE.**

It causes frequent desire, and gives strength to Urinate, thereby removing obstructions, preventing, and curing Strictures of the Urethra, allowing pain and inflammation, so frequent in this class of disease, extending Poisonous, Diseases, and Worst-out Matter.

Thousands upon Thousands

**WHO HAVE BEEN THE VICTIMS OF QUACKS.**

And who have paid Heavy Fees to be cured in a short time, have found they were deceived, and that the "Poison" which they had taken, was "Powerful Astringents," been dried up in the system, to break out in an aggravated form, and

Perhaps after Marriage.

**HELMHOLD'S EXTRACT BUCHU**

Cures

**SECRET DISEASES**

In all their stages; at little expense; little or no change in diet; no inconvenience.

**AND NO EXPOSURE.**

It causes frequent desire, and gives strength to Urinate, thereby removing obstructions, preventing, and curing Strictures of the Urethra, allowing pain and inflammation, so frequent in this class of disease, extending Poisonous, Diseases, and Worst-out Matter.

Thousands upon Thousands

**WHO HAVE BEEN THE VICTIMS OF QUACKS.**

And who have paid Heavy Fees to be cured in a short time, have found they were deceived, and that the "Poison" which they had taken, was "Powerful Astringents," been dried up in the system, to break out in an aggravated form, and

Perhaps after Marriage.

**HELMHOLD'S EXTRACT BUCHU**

Cures

**SECRET DISEASES**

In all their stages; at little expense; little or no change in diet; no inconvenience.

**AND NO EXPOSURE.**

It causes frequent desire, and gives strength to Urinate, thereby removing obstructions, preventing, and curing Strictures of the Urethra, allowing pain and inflammation, so frequent in this class of disease, extending Poisonous, Diseases, and Worst-out Matter.

Thousands upon Thousands

**WHO HAVE BEEN THE VICTIMS OF QUACKS.**

And who have paid Heavy Fees to be cured in a short time, have found they were deceived, and that the "Poison" which they had taken, was "Powerful Astringents," been dried up in the system, to break out in an aggravated form, and

Perhaps after Marriage.

**HELMHOLD'S EXTRACT BUCHU**

Cures

**SECRET DISEASES**

**DR. SWEET'S**

**INFALLIBLE**

**LINIMENT,**

**THE**

**GREAT REMEDY**

For Rheumatism, Gout, Neuralgia, Lumbago, Stiff Neck and Joints, Sprains, Bruises, Cuts and Wounds, Piles, Hemorrhoids, and all Rheumatic and Nervous Disorders.

For all of which it is a speedy and certain remedy, and never fails. This Liniment is prepared from the recipe of Dr. Stephen Sweet, of Connecticut, the famous bone setter, and has been used in the practice for more than twenty years with the most astonishing success.

As an Alleviator of Pain, it is unrivaled by any preparation before the public, of which the most skeptical may be convinced by a single trial.

This Liniment will cure rapidly and radically, Rheumatic Disorders of every kind, and in thousands of cases where it has been used it has never been known to fail.

For Neuralgia, it will afford immediate relief in every case, however distressing.

It will relieve the worst cases of Headache in three minutes, and is warranted to do it.

Toothache also will cure instantly.

For Nervous Debility and General Lassitude, arising from impudience or excess, this Liniment is a most happy and unfailing remedy. Acting directly upon the nervous system, it strengthens and revivifies the system, and restores it to elasticity and vigor.

For Piles, as an external remedy, we claim that it is the best known, and we challenge the world to produce an equal. Every victim of this distressing complaint should give it a trial, for it will not fail to afford immediate relief, and in a majority of cases will effect a radical cure.

Quincy and Sore Throat are sometimes extremely unpalatable and dangerous, but a timely application of this Liniment will never fail to cure.

Sprains are sometimes very obstinate, and enlargement of the joints is liable to occur if neglected. The worst case may be conquered by this Liniment in two or three days.

Brains, Cuts, Wounds, Sores, Ulcers, Burns and Scalds, yield readily to the wonderful healing properties of Dr. Sweet's Infalible Liniment, when used according to directions. Also, Chlaimas, Frosted Feet, and Insect Bites and Stings.

Dr. STEPHEN SWEET, of Connecticut, the Great Natural Bone Setter.

Dr. STEPHEN SWEET, of Connecticut, is known all over the United States.

Dr. STEPHEN SWEET, of Connecticut, is the author of "Dr. Sweet's Infalible Liniment."

Dr. Sweet's Infalible Liniment Cures Rheumatism, and never fails.

Dr. Sweet's Infalible Liniment Cures Burns and Scalds immediately.

Dr. Sweet's Infalible Liniment Is the best known remedy for Sprains and Bruises.

Dr. Sweet's Infalible Liniment Cures Cuts and Wounds immediately and leaves no scar.

Dr. Sweet's Infalible Liniment Is the best remedy for Sores in the known world.

Dr. Sweet's Infalible Liniment Cures Cuts and Wounds immediately and leaves no scar.

Dr. Sweet's Infalible Liniment Is the best remedy for Sores in the known world.

Dr. Sweet's Infalible Liniment Cures Cuts and Wounds immediately and leaves no scar.

Dr. Sweet's Infalible Liniment Is the best remedy for Sores in the known world.

Dr. Sweet's Infalible Liniment Cures Cuts and Wounds immediately and leaves no scar.

Dr. Sweet's Infalible Liniment Is the best remedy for Sores in the known world.

Dr. Sweet's Infalible Liniment Cures Cuts and Wounds immediately and leaves no scar.