

## Broiler Placements Down

ment of broiler-type chicks in Penna. commercial during the week ending July 11 at 719,000 were below the previous week, and 21 per cent below 909,000 placed the corresponding week of 1958.

State hatchery- 189,000 broiler chicks out of state and shipped in.

number of Pa. for market in about 718,000, 21 per cent below the same period

get during the week 000 were the lowest uly November, 1958, cent below the pre- eek and 22 per cent same week last

State Report - type chicks placed 2 important produc- uring the week July 11, totaled 33

TO EGG QUALITY ge egg quality, cr- open, advises Miss W Hamilton, Penn extension nutrition . A high-quality egg of thick white and hat stands up pro- It doesn't spread pan and has true

million, two per cent below a week earlier and the lowest since the week ending Feb 14, 1959.

Indicated number of broilers produced in the 22 important states for market in about 10 weeks is 317 million, down six per cent from last year. Total hatchings of broiler chicks from July 11 to Aug. 1 are expected to be five per cent below last year.

## Henning Tells Reasons For Milk Controls

Harrisburg — Pennsylvania Secretary of Agriculture W L. Henning today further explained the need for bacteriological standards for milk, ice cream and similar frozen dairy products which became effective July 2, '59. "The very nature of milk and milk products is such

that they readily support the development and growth of bacteria, which may be introduced into the products during handling," Henning said.

"The only accepted method of determining the quality and safety of dairy products is by means of a bacteriological examination," he added.

The results of such examinations serve as an index of the quality and safety of the milk products. When bacteria counts are within the announced limits, inspecting and control agencies have an indication that the product has been properly handled and is suitable for human consumption.

While Pennsylvania Dept. of Agriculture requirements are only now being promulgated, similar requirements have been enforced for many years by local control agencies. Many manufacturers have used bacteriological examinations for their own guidance and protection for many years.

Lancaster Farming Classified Ads Get Results

## For Most State Fruit

### Yield Prospects Are Excellent

The Pa. Crop Reporting Service July Fruit crop report estimates 1959 peach production at 28 million bushels, seven per cent below the 1958 crop, and 12 per cent below the 1948-57 average.

Peaches continued to size well during the first part of the month but needed at least normal rainfall to make

average, Grapes - 13 per cent above average, Sour Cherries - 10 per cent above average, and Sweet Cherries - 14 per cent under average

#### Apples

State 1959 apple crop prospects are estimated at 75 million bu. If this materializes, it will be the largest since the 1951 crop of 76 million bu., 17 per cent larger than 1958 and 23 per cent above average.

Largest potato grower in Pennsylvania is Ivan Miller, Corry, Erie County. He has planted 500 acres this year, down 10 per cent from 1958. He is immediate past president of the Pennsylvania Cooperative Potato Growers Association and recently was re-elected president of Pennsylvania Potato Industries, Inc., owners of Potato City Hotel on Route 6, Potter County, near Coudersport.

#### Pears

A crop of 100,000 bu. of pears is predicted for the state. This is 13 per cent less than 1958, and 37 per cent below average. Pear acreage has been declining steadily over past years.

#### Sweet Cherries

The Pa. Sweet Cherry crop is estimated at 800 tons compared with 1,100 tons in 1958 and a 1948-57 average of 1,130 tons. The light crop is the result of spotty frost damage in Erie County which produces most of the crop. Harvest was well underway in Erie the first of the month and nearly completed elsewhere in the state.

#### Sour Cherries

The July 1 estimate for Penna. Sour Sherry production was 10,300 tons, eight per cent off 1958's crop, but 14 per cent above average.

#### Grapes

The first forecast for 1959 Pa. grape prospects is for 24,600 tons. This is 15 per cent less than 1958, but 16 per cent above average.

#### U. S. in Brief

U. S. fruit prospects include Apples—10 per cent above average; Peaches - seven per cent above last year; Pears - 10 per cent above

WHITEN, BRIGHTEN and SANITIZE your barn with **Carbola** disinfecting white paint

GET ALL 4 ADVANTAGES with 1 easy spraying

1. Sprays a clean bright white
2. Kills disease germs
3. Eliminates cobwebs for months
4. Kills flies, lice and other pests

Your barn smells clean because it is clean—Carbola clean!

For a "Grade A" job see your Certified Carbola Sprayman or ask your dealer about the Carbola Rental Sprayer.

For further information write Dept. LF 79

**Carbola** CHEMICAL CO., Inc. Natural Bridge, N.Y.

## EBANON CHEMICAL CORPORATION

EBANON

Phone CResview 3-1687

Distributing in Lancaster County Contact Us For Local Dealers

# DITHANE M-22

letter for blight control gives stand-by protection helps increase yields



uring 1958 in major potato states and the blight controlling ability ANE M-22 and of nabam. Late as severe in two of the states; ght in one.

clusions reached by the scientists the results obtained by the rowers who also compared the ance of DITHANE M-22 and

intervals of seven days, NE M-22 (1 1/2 pounds/acre) etter control of late blight DITHANE D-14 (2 quarts/acre). ervals of ten days the superi- of DITHANE M-22 was out- g. Similar advantages in early control with DITHANE M-22 oted

were significantly higher etter blight control was ed with DITHANE M-22. In lots protected at 7-day

intervals, DITHANE M-22 out-yielded DITHANE D-14 from 20 to 70 bushels per acre.

These facts prove that DITHANE M-22 is superior to nabam in controlling early and late blight. Equally important, DITHANE M-22 gives you *standby protection*—protection to carry your vines safely past emergencies when the interval between sprays must be lengthened. We think you will find DITHANE M-22 truly a milestone in potato blight control.

\*DITHANE M-22 . . . now 80% maneb



Chemicals for Agriculture **ROHM & HAAS COMPANY** WASHINGTON SQUARE, PHILADELPHIA 5, PA.

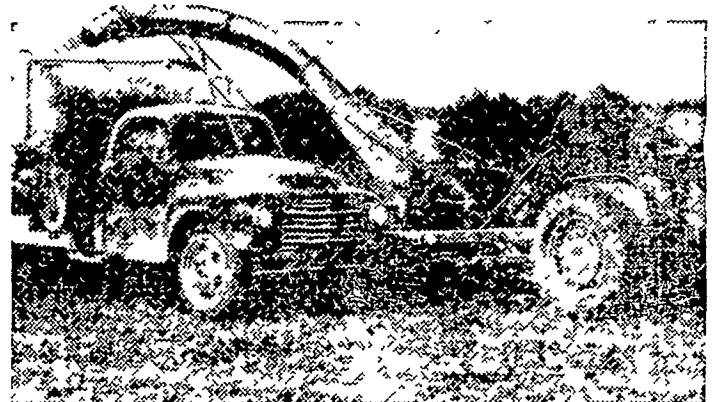
Your Local Dithane Dealer

**P. L. ROHRER & BRO.**

GETTOWN, PA.

Phone Lanc. EX 2-2659

## QUALITY FEEDMAKER



. . . key to 3/4 ton more milk per cow

Paul Bryant, an Indiana dairyman, increased his milk production an average of 1,550 pounds of milk per cow when he switched to green feeding. His Allis-Chalmers Forage Harvester contributed greatly. It helped him lift his D.H.I.A. average to 12,650 pounds per cow.

Why not learn how the Allis-Chalmers Forage Harvester with its clean, crisp cut can help you feed more animals, make more meat or milk, from the same acreage? Stop in today and learn the difference in forage harvesters.

Ask us about the Allis-Chalmers plan to finance your time purchase of farm machinery.

**ALLIS-CHALMERS** SALES AND SERVICE

L. H. Brubaker Lancaster, Pa.

Nissley Farm Service Washington Boro, Pa.

Mann & Grumelli Farm Serv. Quarryville, Pa.

R. S. Weaver Stevens, Pa.

L. H. Brubaker Lititz, Pa.

N. G. Myers & Son Rheems, Pa.

Snavelys Farm Service New Holland, Pa.