

'Road Reasoning' Rates As Tractor Safety Need

Accident experience indicates that one third of all fatal tractor accidents occur on public roads, William L. Henning, chairman of Farm Safety Week, said today.

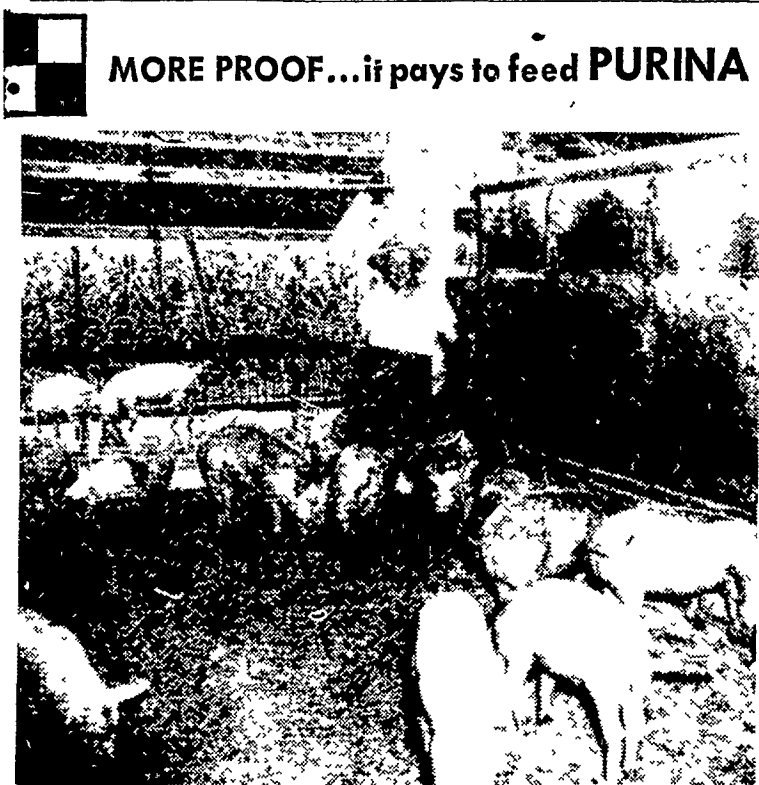
"Upsets and collisions lead the list. Loss of control and falls from the tractor also take a heavy toll. Extra riders are involved in many cases," Henning said.

He also pointed out that the hazards to the automobile driver confronted by slow-moving farm equipment also demand consideration. More than one driver has lost his life while attempting to pass or avoid collision with farm machinery.

"Surprising as it may seem, drivers involved in such accidents sometimes report that they were unaware until too late that a tractor, clearly visible, was not moving at a speed compatible with the normal flow of traffic," Henning said. A red flag mounted above the tractor has proved effective in warning daytime traffic of the hazard presented by slow-moving farm equipment, Henning said. The flag should be mounted high above the equipment for maximum visibility.

Here are some safety suggestions for moving farm equipment on public roads.

- Good planning can avoid much unnecessary movement of farm equipment on heavily traveled roads
- Keep the tractor under control. Slow down for turns and keep the tractor in gear on downgrades.



MORE PROOF...if pays to feed PURINA

GEORGE E. COGLEY, R. D. 1, RONKS

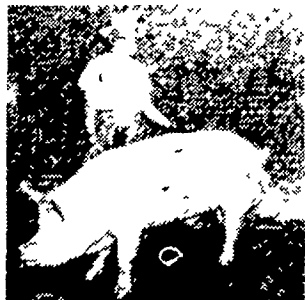
Purina Feeding Program Makes Grand Champions

The Grand Champion Boar and the Reserve Champion Sow at the 1959 Indiana Yorkshire Breeders Invitational Show and Sale was won by George E. Cogley, owner of Leacock Yorkshire Farm, Ronks, R. D. #1.

Mr. Cogley has been a Purina feeder for over 15 years and an outstanding Yorkshire breeder for 10 years. In breeding champions, he uses a Purina concentrate mixed with grain.

He states, "I use Purina feed 100% in my feeding program and it really does the job as the results show."

We can help you plan a sound feeding and management program, backed by Purina Research. Call or visit us for details.



- | | |
|--|----------------------------------|
| Blend & McGinnis
Atglen | S. H. Hiestand Co.
Salunga |
| Whiteside & Weicksel
Kirkwood | Warren Sickman
Pequea |
| Snader's Mill
Mt. Airy | John J. Hess
Kinzer - Vintage |
| John J. Hess, II
Intercourse - New Providence | John B. Kurtz
Ephrata |
| Wenger's Feed Mill, Inc.
Rheems | James High
Gordonville |
| B. F. Adams
Bird-in-Hand | |

ators, possessing mature judgment, should be given the responsibility of handling farm machinery on public roads.

- Locate entrances to fields and farm yards to allow good visibility for operators of farm machinery and motor vehicles.

- Red flags by day, approved lighting by night, calls the attention of the motorist to the dangers of slow-moving farm machinery.

- Know and observe traffic laws

Potato Leafhopper Threatens Alfalfa Through August

Alfalfa will be under attack by the potato leafhopper for at least another month. The feeding by leafhoppers results in the alfalfa being reduced in size and vigor and developing yellow leaves.

Insect injury can be prevented by spraying with three pints of Methoxychlor emulsion per acre when the new shoots are four to six inches

Save the washing instructions that come with new garments, advises Miss Thelma Baierl, Penn State extension clothing specialist. The instructions on the tag or label are the results of tests and research. When followed they help lengthen the life of clothes.

1960 Farm Show Milk Winners To Get Plaques

Milk division winners at the 1960 Pennsylvania Show next January at Harrisburg will receive plaque awards instead of the traditional cash prizes. The Farm Show Commission has announced that entry rules will be little changed, according to Culloch, Commission secretary.

Again, producers and dealers who want to enter the milk competition have two deadlines to meet, first of them Sept. 1. Before that date they must obtain entry forms from Farm Show Manager John B. McCool.

These must be filled out and returned to him postmarked not later than Sept. 30 — the second deadline.

After Oct. 1 and before Jan 1 samples for scoring will be collected, on unannounced visits, from all producers and dealers who fill out entry forms.

As a double assurance for accuracy and uniformity, all scoring for the whole State will be done at once within the collecting area by the same trained technician.

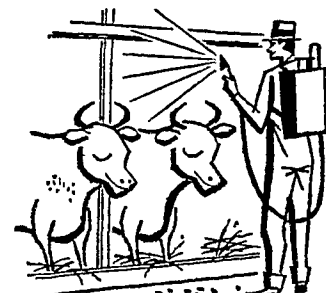
The Farm Show manager will have charge of gathering the samples and the scoring. Plaques will be awarded to all whose samples score 92 per cent or better.

All winners will be announced at the Farm Show.

No milk will be scored at the Farm Show, but producers and dealers with high scores will be invited to supply samples for display.

In 1878, the first Sunday edition newspaper was published in Philadelphia. The Philadelphia Daily News is the oldest daily newspaper published in the country.

Patronize Local Advertising

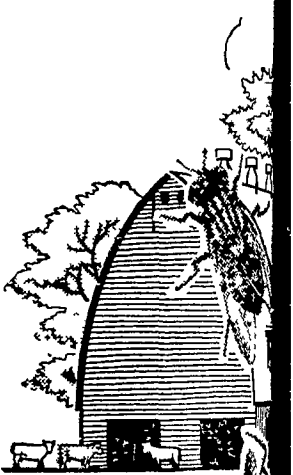


USE

THESE FLY KILLERS...

... DIRECTLY ON ANIMALS

- Ehrlich's Livestock Spray R-11
Wet hairs on dairy animals
- Korlan 12 E
Use with fuel oil 10 1 on back rubbers
- Korlan 25 W. P.
Use with water 4 lb in 25 gal as a direct spray
- Marlate 50
Use as a dry rub on dairy animals
* Not on dairy animals



... IN BUILINGS

- Korlan 12 E
1 12 for 3-4 week residual
- Diazinon 25 E
1 25 for 3-4 week residual
- Dipterex Bayer L-13 59
As bait dry or wet
- Ortho Fly Killer Dry Bait
Just scatter thinly on floor
- Lethalair Bomb D-200 or
Use daily in milkhouses, your home

Get Your Supply at These Dealers

- | | | |
|--|---|---|
| Blue Ball
Jacob B Zimmerman | Intercourse
Charles B Hooper | Peach Bottom
C E Wiley & Co |
| Bareville
Martin's Hardware | Kirkwood
L H Jackson | Quarryville
Musser's Mill |
| Columbia
Musser Farms
16th St & Lanc Ave | Myer's Store | Ross H Roberts |
| Denver
Denver Supply Co
Allen H Matz | Lancaster
Lancaster County Farm Bureau
L H Brubaker
350 Strasburg Pike | Ronks
Lester A Sings |
| Elizabethtown
Kaylor Bros, R D #1
Farmers Supply Co, | Lincoln
Galen Hardware | Schoeneck
Brchn & Eng |
| Ephrata
Farmersville Equipment Co
R D #2
Martin's Feed Mill,
R D #3
C P Wenger & Sons | Lititz
Eby's Mill, Inc | Stevens
Snader's Mill |
| Florin
Hess Bros.
Mumma's Hardware | Manheim
Cassel's Mill, Inc,
R D #1
N G Hershey & Son | Strasburg
I. B Graybill |
| Gap
Summer Bros
Hardware | Millersville
Millersville Supply Co | Washington Boro
Ament's Hardware
Nissler's Farm |
| | Mounville
Kauffman Bros. | West Willow
West Willow Farmers Assn |
| | Parkesburg
A H Keen & Son | Willow Street
Dombach Bros |

J. C. EHRLICH CO.

Distributor
736 - 38 East Chestnut St., Lancaster, Ph. EX 7-3721